

2020 International Prospectus



**Disclaimer**

The information contained in this prospectus is correct at the time of printing (June 2019). Waikato Institute of Technology (Wintec) reserves the right to cancel or postpone any of the programmes and shall not be liable for any claim other than the proportion of programme fees which the cancelled portion bears. Some programmes may be dependent upon formal approval from the New Zealand Qualifications Authority (NZQA), Tertiary Education Commission (TEC) funding allocation and the number of enrolments. As part the NZQA targeted review of all Level 1-6 New Zealand qualifications, there may still be changes to some programmes starting in 2020.



Fees, programmes and dates are subject to change. Please check course information at wintec.ac.nz before applying to enrol.

Contents

Welcome to Wintec

- 02 Why study at Wintec
- 03 Hamilton, New Zealand
- 04 Our facilities
- 05 Our campuses
- 06 Student support services
- 07 Accommodation
- 08 Qualification levels and Entry requirements
- 09 Design Factory NZ

Your Study Options

- 10 Beauty and Hairdressing
- 12 Business Management
- 18 Education
- 20 Engineering and Industrial Design
- 22 English Language
- 26 Short Courses and Exam Preparation
- 28 Foundation and Pathways
- 30 Health and Social Practice
- 36 Hospitality and Cookery
- 38 Horticulture, Landscape and Tree Care
- 40 Information Technology (IT)
- 44 Media Arts
- 48 Science (Applied)
- 50 Sport Science and Human Performance
- 54 Research and Applied Innovation
- 56 Veterinary Nursing and Rural Animal Technology

Next Steps

- 58 Important information
- 59 Glossary
- 61 Apply Now



Why study at Wintec?

There are plenty of reasons to study at Wintec. We offer a practical learning environment, dedicated student support, and our tutors are practising industry professionals.

- 1 We offer more than just a qualification**
 At Wintec, you will find more than just a place to study. You will be on a first name basis with your tutors, because they care and want to give you the support you need to succeed at Wintec and beyond. You will be able to get involved in student events throughout the year, and make life-long friends.
- 2 Learning is hands-on and practical**
 You will be learning in our purpose-built facilities, which include: a practising nursing ward, a sport science performance hub, specialist kitchens and a training restaurant, hair and beauty salons, music and design studios, and much more. Some of our facilities are open to the public, giving you the chance to put your knowledge into practice.
- 3 We have everything you need**
 It's important to us that our students feel at home, both at Wintec and in the Waikato region. Wintec's support services are at your fingertips to make life easy. We also offer two accommodation options in the heart of the city, and one on the Rotokauri Campus.
- 4 Internationally recognised qualifications**
 Providing the opportunity to gain internationally recognised qualifications is our core promise. Students come to Wintec to begin or advance their careers.



A note to parents

Why you should choose Wintec for your son or daughter.

As a parent or guardian, you want the best for your children and so do we. One of the things that distinguishes Wintec, is the emphasis we place on education taking place in a great environment – one that is safe, celebrates achievement, diversity, and respect for others and connects with our local communities. When a student enrolls at Wintec, they immediately become part of our community.

Dedicated International Centre

The support doesn't stop once a student arrives at Wintec. The multicultural International Centre team is available 24/7 to help students with general advice, accommodation, and ensure students feel supported and cared for. The International Centre also organises cultural events throughout the year and provides extra care for students under the age of 18.

Preparation for a successful career

Our tutors are experts in their field, with industry experience, as well as rich industry connections. We provide state-of-the-art facilities so your son or daughter has access to modern equipment and technology and numerous opportunities to train in real work environments.

Hamilton, New Zealand

In Hamilton, you will enjoy city life without all the inconveniences of big city life. You're spoilt for choice with a unique mix of things to do and enjoy. You can enjoy watching a live sports match, shopping, visiting the Waikato Museum or an art gallery, paintball, ten-pin bowling, go-carting, watching a play or musical at the theatre, lively nightlife and the picturesque river and lake walkways. Just an easy drive away are beaches, mountains, rivers, thermal pools, countryside, sport centres and adventure activities.



Local Events

From international sporting events such as rugby and cricket, to music festivals, National Agricultural Fieldays, Balloons over Waikato, expos, theatre, dance, visual arts, markets and more, there's always something happening in Hamilton.



Location

Built on the banks of New Zealand's largest river, Hamilton is close to beaches, mountains, thermal pools, sport centres, adventure activities, and is a short driving distance from Auckland, Rotorua and Raglan beach.



Climate

Hamilton has a temperate climate, which means summers are warm and dry and winters cool and wet. Summer temperatures are generally lower than 30 degrees C.



Cost of Living

Living costs and accommodation in Hamilton are considerably cheaper in comparison to other cities, such as Auckland, Christchurch or Wellington.



Tourism

Hamilton is in close proximity to many world-famous tourist attractions including Waitomo Caves, Hobbiton, Te Aroha Mineral Spas, and more!

Our facilities



Engineering and Trades

Our engineering and trades facility is home to more than 1000 engineering and trades students and 100 Wintec staff.

The building's unique design and function make it New Zealand's most modern engineering and trades education facility, with an open-plan layout, flexible teaching spaces and the latest technologies.

The design is informed by a collaborative, project-based, real-world learning philosophy to create vibrant, flexible, and contemporary spaces for students and staff.



Windows Restaurant

Our prized student-operated training restaurant, Windows, has a licensed bar and offers indoor and outdoor dining to accommodate 80 people.

Students gain the skills they need in this state-of-the-art training facility, which includes two large commercial kitchens and a production kitchen.



Ramp Gallery

Ramp Gallery is our contemporary exhibition space within the School of Media Arts.

Ramp connects our students to a professional gallery experience while exposing them to a range of contemporary art.

Each exhibition also runs an accompanying education and public programme.



Urban Hair and Spa

Our Hairdressing and Beauty Therapy students can enjoy learning in our two fully equipped salons, Urban Spa and Hair.

Students can improve their practical and salon-operation skills, while working with real clients and gaining real salon experience.



Practising Nursing Ward

Our real world-simulated learning area is set up as an actual nursing ward and includes computerised, patient-models that assume real life health issues.

This allows students to practise on real-world scenarios and gain hands-on skills and experience in a safe and supportive environment.



Our campuses

Depending on what you study, you will be based at one of our three main campuses in Hamilton.

Hamilton City Campus

The Hamilton City Campus is located in the heart of the CBD. There's onsite accommodation and snack spots throughout The Gallagher Hub, with eateries, shops, the Waikato River, Hamilton's Lake Rotoroa, and public transport just a short walk away.

Rotokauri Campus

If you want to study sport science, trades, engineering, animal care, hospitality, or cookery, you will be based out at the Rotokauri Campus. Located north of the city, you will be learning in some of the best purpose-built facilities in New Zealand, and studying or relaxing in a modern student hub with access to a library, computers, and great food and coffee.

Hamilton Gardens Campus

The Hamilton Gardens Campus gives you the unique opportunity to study Arboriculture, Horticulture, or Landscape Design or Construction in a hands-on, practical setting. You will put theory into practice at the international award-winning Hamilton Gardens, leaving your own mark on the city.

Student support services

We want to offer the best support to help you succeed and achieve your goals. The following services are available to make studying in New Zealand easier for you.

Dedicated International Centre

Our friendly International Centre team is ready to provide you with the support and advice you need to have a positive experience at Wintec.

Studying away from your home country is an exciting opportunity and we want to make it as easy for you as possible.

Our specialist international student services team will support you as you settle into your new learning environment and the wider community. We will help you find somewhere to live, understand New Zealand's culture and customs, and offer pastoral care and support.

You'll find the International Centre team in B Block at the City Campus.

Student Learning Services

Our learning advisors are available to help develop your writing, critical thinking, and research and study skills while you're here. They can work alongside you and your tutors in the classroom, coordinate small group study sessions, connect you with other students studying the same things, or provide one-to-one support. For more information, contact sls@wintec.ac.nz.

Employment advice and support

If you need help preparing your application for a holiday job, part-time work, or your first graduate role, come along to one of our workshops and we'll give you a hand with your CV, cover letter or interview planning.

Computer access

The Gallagher Hub at the City Campus has computers for you to use 24 hours a day, seven days a week. Both the city and Rotokauri campuses have high-speed wireless internet so you can bring your own device to class and study where you want.

You will also have access to the Information Technology Services Helpdesk, whose staff are there to help with computers, printers, scanners, and the MyLearning online portal.

Student Disability Services

We have a dedicated team ready to help enable students' academic abilities and opportunities. If you have a physical, learning, or psychological impairment, you may be able to get help with your studies. Contact us on sls@wintec.ac.nz to see how we can help you.

Library

You will have access to our Wintec libraries at the city and Rotokauri campus hubs. Both will provide you with a huge range of resource material. If we don't have the material you need, you will have access to online databases which allow you to search for other resources.

Bring Your Own Device (BYOD)

We encourage all students to bring their own laptop to work on, no matter which programme they are enrolled in. For more information on the BYOD initiative, visit www.wintec.ac.nz/byod.

MyLearning

MyLearning is an online forum where you can keep track of your timetable, check your student email, and study online.

Multi-faith rooms

In both our City and Rotokauri campus student hubs, you will find prayer rooms with washing facilities.

Moodle

We know it's easier to have all your lecture notes, research material, and practice tests in one place, so Moodle will become your chosen online learning tool during the course of your programme. As well as your course material, Moodle will also give you access to a help centre, where you will find information on referencing and assignment writing. You can access Moodle anytime, anywhere, with just a computer and internet connection.

Health services and counselling

If you need medical help while you study, enrol at our Wintec Health Centres at the City or Rotokauri Campuses. We've got a great team of doctors, nurses, counsellors, and a chaplain to help with any issues you have while you study.

Childcare

Kidz@Wintec on the city campus provides care and education for children up to the age of five – places are limited.

Phone +64 7 834 8812 or email kidz@wintec.ac.nz.

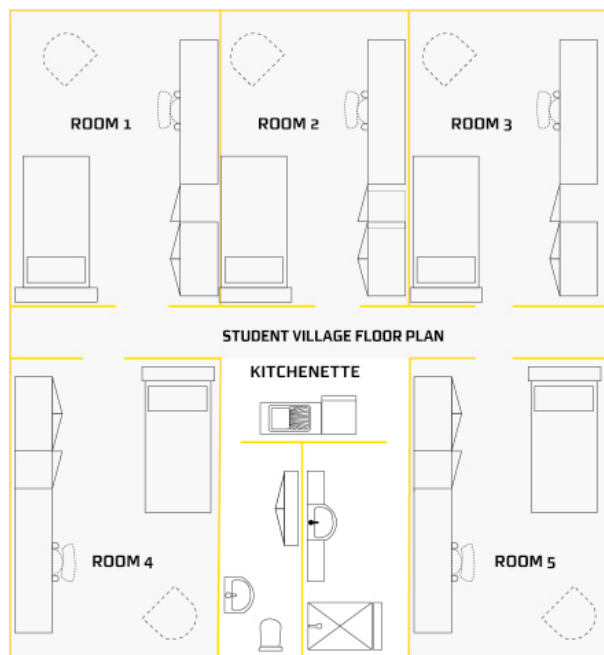
Security

We all deserve to live, work, and study in a safe environment. That's why we have security staff patrolling our buildings 24 hours a day, seven days a week, and emergency phones located around all our campuses.

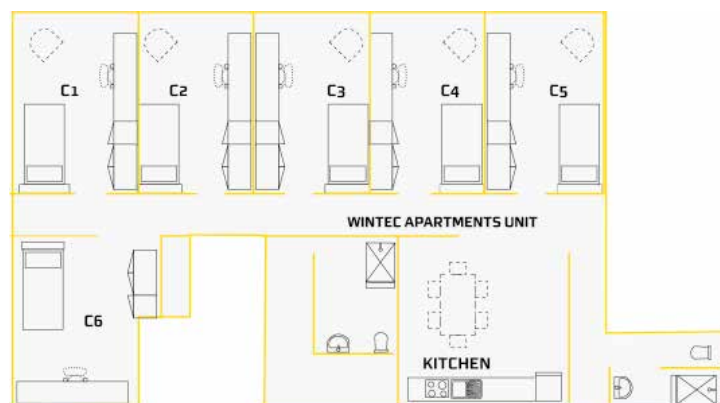




Student Village



Wintec Apartments



Eco Village



Accommodation

Student Village

Hamilton City Campus

Start your post-school life in a fully furnished unit in the Student Village. You will be a short 5-minute walk away from the Wintec City Campus. You will also get the independence of living away from home, with the bonus of pastoral care, cleaning, and meals offered seven days a week. We also provide a calendar of social activities to get you settled into your first year of study.

Wintec Apartments

Hamilton City Campus

When you've found your feet in Hamilton, a self-catered apartment right on the city campus could be exactly what you need.

Each apartment contains up to six rooms and a fully equipped kitchen, with storage on the lower floor, and a shared laundry. With swipe card access and CCTV, these apartments are modern, safe, and secure. And there's no need for a car when you're this close to town, study, and public transport.

Eco Village

Rotokauri Campus

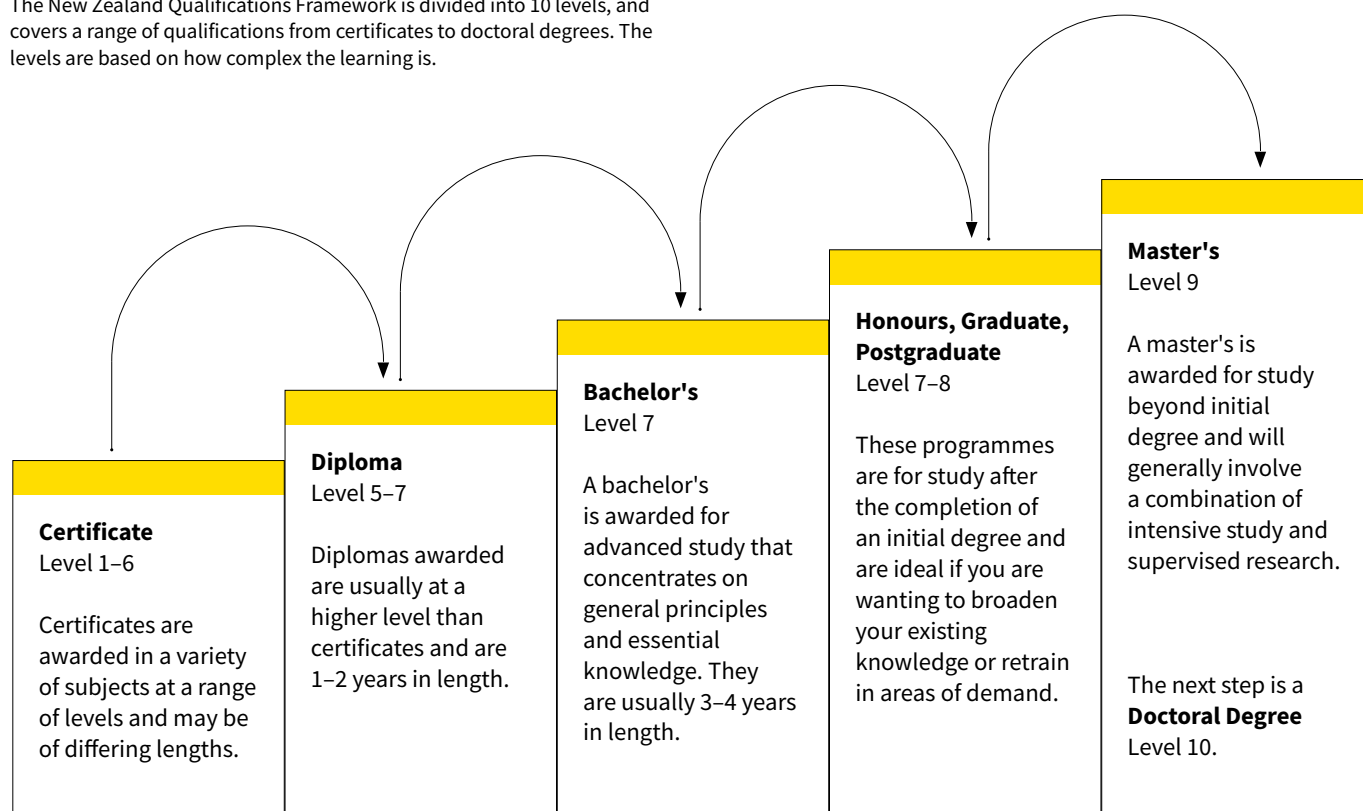
We offer fully-furnished and self-catered units in our Eco Village, right on the Rotokauri Campus. Designed for mature students and those with families, each unit has 3-4 bedrooms and comes fully equipped – from lounge and dining furniture, and king single beds, right down to a heat pump, television, and vacuum cleaner. And we've got you covered with access to our high-speed Wi-Fi, so all you need to focus on is your study.

Contact us to secure your place in one of our accommodation options at international_accommodation@wintec.ac.nz



Qualification levels

The New Zealand Qualifications Framework is divided into 10 levels, and covers a range of qualifications from certificates to doctoral degrees. The levels are based on how complex the learning is.



Entry requirements

Please check the entry criteria and English language requirements for your desired programme of study. If you don't meet the entry requirements, there may be some other ways you can gain entry to your chosen field of study.

Internationally recognised English proficiency outcomes for international students

IELTS	TOEFL IBT	TOEFL PBT	Pearson
5.5 (Level 4)	46	530	42
5.5 (Level 5)	46	550	42
6.0	60	550	50
6.5	79	590	58

Note: for the Bachelor of Nursing and Bachelor of Midwifery a B grade Occupational English Test score (OET) score (IELTS 7.0-7.5 equivalent) is acceptable in terms of meeting English proficiency.

Foundation programmes can provide you with the basic study fundamentals to assist you in moving into higher levels of study. For more information visit www.wintec.ac.nz/foundation.

If you are unsure about the entry criteria for your programme of study or whether the requirements are flexible, please email international@wintec.ac.nz.



Design Factory

The Design Factory NZ offers a unique opportunity for students who are excited by possibility, are motivated to act, and are open-minded thinkers - ready to create a brighter future.



The first of its kind in New Zealand, the Design Factory NZ is a co-creation space where Wintec students work alongside industry partners to solve complex, real-world problems.

Students will work in a team with other students from different disciplines across Wintec, as part of a global network of design thinkers.

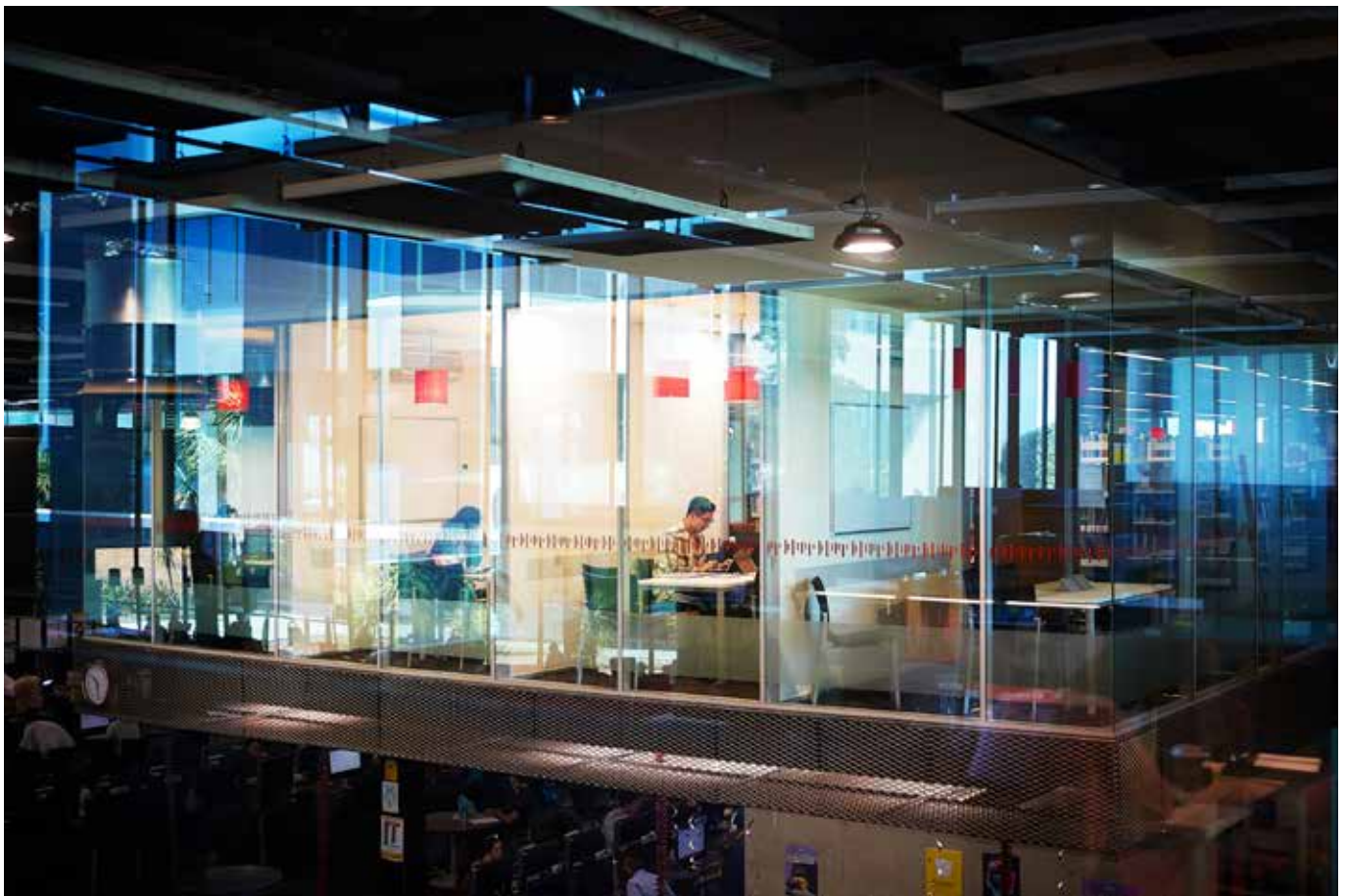
How does it work?

Over a semester, students are introduced to their industry partner and the complex problem they are being asked to solve. Students work collaboratively in an interdisciplinary team, using a range of design thinking and problem-solving skills to design a solution. Design Factory coaches guide the students to conduct meaningful and empathetic interviews, bring clarity from a range of insights, generate hundreds of possible solutions, rapidly create testable prototypes, and validate their outcomes on people directly affected by the problem.

Students are based in a dedicated Design Factory space at the Wintec City Campus.

Who can apply?

The Design Factory NZ course is currently available to third-year students working towards a degree in media arts, business, IT, engineering, social work, counselling, and science. However, enquiries are welcomed from students in any degree. After successfully completing the course, students will gain 30 credits towards their programme of study.



Beauty and Hairdressing



City & Guilds

APPROVED
CENTRE

Diploma in Beauty Therapy (Level 5)

New Zealand Diploma in Beauty Therapy (Level 5)

Duration: 1 year

Start Date: February

Location: Hamilton City Campus

This programme will provide the beauty sector with therapists who have the skills and knowledge to critically analyse clients' needs and provide advanced beauty and body services.

It is suitable for learners who have prior learning or experience as a beauty therapist and will equip them with the skills and knowledge to successfully provide advanced beauty services and manage the operations of a client base or small beauty therapy business.

English Language Requirements:

Candidates who have English as a second language are required to have an IELTS (Academic) score of 5.5, with no band score less than 5.0; or equivalent.

Find out more at www.wintec.ac.nz/SI2001.

Hair Design Year 1

New Zealand Certificate in Hairdressing (Salon Support) (Level 3)

Duration: 1 year

Start Date: February or July

Location: Hamilton City Campus

Students will gain essential skills in hairdressing and salon operation, to prepare for an apprenticeship or entry position in the hairdressing industry. This programme includes 120 hours of work-based training in a real salon environment.

Graduates may be employed as hairdressers, barbers, salon managers, or hair stylists.

This programme includes the internationally recognised City & Guilds qualifications.

English Language Requirements:

Candidates who have English as a second language are required to have an IELTS (Academic) score of 5.5, with no band score less than 5.0; or equivalent.

Find out more at www.wintec.ac.nz/RS1702.

Hair Design Year 2

New Zealand Certificate in Hairdressing (Emerging Stylist) (Level 4)

Duration: 1 year

Start Date: February

Location: Hamilton City Campus

This programme is designed for those wanting to further their professional hairdressing skills and knowledge. Students will learn a range of cutting styles, permanent colouring techniques, reformation services, and advanced styling. This programme focuses on a practical understanding of the daily business needs and practices of a salon, working with real clients to provide consultations and a quality salon experience. Study also includes 160 hours of work-based learning.

On completion of this programme, students will need to work in a salon to complete their final credits before they can be registered as a fully qualified hairdresser.

This programme includes the internationally recognised City & Guilds qualifications.

English Language Requirements:

Candidates who have English as a second language are required to have an IELTS (Academic) score of 5.5, with no band score less than 5.0; or equivalent.

Find out more at www.wintec.ac.nz/SI1801.



Business Management



Business 5

New Zealand Diploma in Business with strands in Accounting, Administration and Technology, and Leadership and Management (Level 5)

Duration: 1 year

Start Date: February or July

Location: Hamilton City Campus

This programme is designed to provide students with a broad base of business knowledge, and gain role-specific skills in either accounting, administration and technology, or leadership and management.

Graduates may be employed in senior supervisory or operational advisory positions.

English Language Requirements:

Candidates who have English as a second language are required to have an IELTS (Academic) score of 5.5, with no individual band score lower than 5.0; or equivalent.

Find out more at www.wintec.ac.nz/BI1701.

Graduate Diploma in Accounting (Level 7)

Duration: 1 year

Start Date: February or July

Location: Hamilton City Campus

This programme is for those with a degree in another subject who want to progress their career into accounting. Students will learn the theory and practice of accountancy, decision-making and business analysis, as well as financial reporting, and business tax regulations. This programme includes a work placement and research project. Selection criteria applies.

English Language Requirements:

Candidates who have English as a second language are required to have an IELTS (Academic) score of 6.0, with no individual band score lower than 5.5; or equivalent.

Find out more at www.wintec.ac.nz/BI1501.

Graduate Diploma in Event Management (Level 7)

Duration: 1 year

Start Date: February or July or November*

Location: Hamilton City Campus

This programme is for those with a degree in another subject who want to progress their career into event management. Students will develop specialist skills in planning and management, project management, logistics, and marketing and sponsorship. This programme includes a work placement and research project.

English Language Requirements:

Candidates who have English as a second language are required to have an IELTS (Academic) score of 6.0, with no individual band score lower than 5.5; or equivalent.

Find out more at www.wintec.ac.nz/BI1505.

*November intake to be confirmed



Graduate Diploma in Human Resource Management (Level 7)

Duration: 1 year

Start Date: February or July or November*

Location: Hamilton City Campus

This programme is for those with a degree in another subject who want to progress their career into human resource management. Students will develop specialist skills in staff management, recruitment, employee performance, employee up-skilling and development, and conflict resolution. This programme includes a work placement and research project.

English Language Requirements:

Candidates who have English as a second language are required to have an IELTS (Academic) score of 6.0, with no individual band score lower than 5.5; or equivalent.

Find out more at www.wintec.ac.nz/BI1502.

**November intake to be confirmed*

Graduate Diploma in Innovation and Entrepreneurship (Level 7)

Duration: 1 year

Start Date: July

Location: Hamilton City Campus

This programme is for those with a degree in another subject who want to pursue a career in innovation and entrepreneurship. Students will develop specialist skills in creativity, strategic planning, product development, and managing growth. This programme includes a work placement and research project.

English Language Requirements:

Candidates who have English as a second language are required to have an IELTS (Academic) score of 6.0, with no individual band score lower than 5.5; or equivalent.

Find out more at www.wintec.ac.nz/BI1608.

Graduate Diploma in Operations and Production Management

Duration: 1 year

Start Date: February or July or November*

Location: Hamilton City Campus

This programme is for those with a degree in another subject who want to progress their career into operations management. Students will develop specialist skills in analysis and logistics to plan and implement production efficiencies. This programme includes a work placement and research project.

English Language Requirements:

Candidates who have English as a second language are required to have an IELTS (Academic) score of 6.0, with no individual band score lower than 5.5; or equivalent.

Find out more at www.wintec.ac.nz/BI1506.

**November intake to be confirmed*



Graduate Diploma in Retail Management (Level 7)

Duration: 1 year

Start Date: July

Location: Hamilton City Campus

This programme is for those with a degree in another subject who want to progress into management positions within the retail industry. Students will develop specialist skills in marketing campaigns, in-store design, and customer in-store experiences. This programme includes a work placement and research project.

English Language Requirements:

Candidates who have English as a second language are required to have an IELTS (Academic) score of 6.0, with no individual band score lower than 5.5; or equivalent.

Find out more at www.wintec.ac.nz/BI1609.

Graduate Diploma in Sales and Marketing (Level 7)

Duration: 1 year

Start Date: February or July or November*

Location: Hamilton City Campus

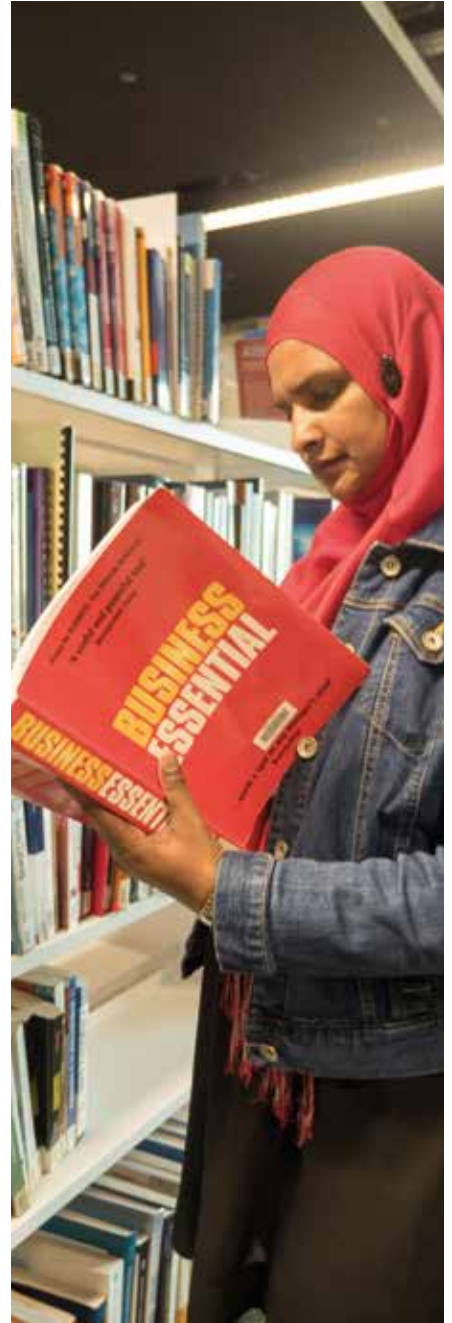
This programme is for those with a degree in another subject who want to progress their career into sales and marketing. Students will develop specialist skills in consumer behavioural analysis, domestic and international market theory, and applied marketing campaigns. This programme includes a work placement and research project.

English Language Requirements:

Candidates who have English as a second language are required to have an IELTS (Academic) score of 6.0, with no individual band score lower than 5.5; or equivalent.

Find out more at www.wintec.ac.nz/BI1503.

*November intake to be confirmed



Graduate Diploma in Strategic Management (Level 7)

Duration: 1 year

Start Date: February or July or November*

Location: Hamilton City Campus

This programme is for those with a degree in another subject who want to progress into management and business strategy positions. Students will develop specialist skills in business strategy, analytics, and strategic thinking. This programme includes a work placement and research project.

English Language Requirements:

Candidates who have English as a second language are required to have an IELTS (Academic) score of 6.0, with no individual band score lower than 5.5; or equivalent.

Find out more at www.wintec.ac.nz/BI1504.

**November intake to be confirmed*

Graduate Diploma in Supply Chain Logistics (Level 7)

Duration: 1 year

Start Date: February or July or November*

Location: Hamilton City Campus

This programme is for those with a degree in another subject who want to progress into supply chain and logistical management positions. This programme includes a work placement and research project.

English Language Requirements:

Candidates who have English as a second language are required to have an IELTS (Academic) score of 6.0, with no individual band score lower than 5.5; or equivalent.

Find out more at www.wintec.ac.nz/BI1808.

**November intake to be confirmed*

Bachelor of Applied Management (Level 7)

Duration: 3 years

Start Date: February or July

Location: Hamilton City Campus

This degree is designed for those with a drive to succeed in business, with a practical focus, and a flexible structure. Students can choose from a range of majors and elective modules, and will gain a broad range of business skills, as well as specialist skills and work experience in their chosen major.

Students will have the opportunity to undertake collaborative real-world projects with students from other disciplines, and with industry.

Majors in this degree include accounting (optional CAANZ/CPA pathway), event management, human resource management, operations and production management, sales and marketing, strategic management, innovation and entrepreneurship, retail management, and supply chain logistics.

English Language Requirements:

Candidates who have English as a second language are required to have an IELTS (Academic) score of 6.0, with no individual band score lower than 5.5; or equivalent.

Find out more at www.wintec.ac.nz/BI1401.



**"This experience has given me the confidence to pursue
a career in HR once I've completed my studies"**

**Cushla Richardson
- Bachelor of Applied Management student**



Education



Bachelor of Teaching (Early Childhood Education) (Level 7)

Duration: 3 years

Start Date: February or July

Location: Hamilton City Campus

This degree is designed for those who would like to pursue a career as a qualified early childhood education teacher. In addition to class time, students will spend a minimum of 12 hours per week in a licensed early childhood education setting putting skills into practice.

Graduates will be able to apply for certification with the Teaching Council of Aotearoa New Zealand and be qualified to teach in licenced early childhood education services.

English Language Requirements:

Candidates who have English as a second language are required to have an IELTS (Academic) score of 7.0 or higher. The Teaching Council of Aotearoa New Zealand has several exemptions to this requirement and candidates should check these with Wintec in case they meet one of them.

Important note:

A new teaching degree programme is in development to replace the existing Bachelor of Teaching (Early Childhood Education). The replacement programme could be approved as early as February 2020. Once the new programme receives NZQA and Teaching Council of Aotearoa New Zealand approval, current students will remain studying towards the Bachelor of Teaching (Early Childhood Education) and all new students will be enrolled into the replacement degree programme.

Find out more at www.wintec.ac.nz/EU0901.

Graduate Diploma in Teaching English to Speakers of Other Languages (Level 7)

Incorporating the Graduate Certificate in Teaching English to Speakers of Other Languages

Duration: 1 year (or 6 months for Graduate Certificate)

Start Date: February or July

Location: Hamilton City Campus

This programme is designed for those who want to work with people learning English as a second or additional language. These programmes are suitable for trained teachers as well as those with little or no teaching experience.

Graduates may be employed teaching English to learners in the primary, secondary, or tertiary education sectors in New Zealand or overseas.

English Language Requirements:

Candidates who have English as a second language are required to have an IELTS (Academic) score of 6.0, with no individual band score lower than 5.5; or equivalent.

Find out more at www.wintec.ac.nz/ES0101.



Engineering and Industrial Design

EN1602

New Zealand Diploma in Architectural Technology (Level 6)

Duration: 2 years

Start Date: February

Location: Hamilton Rotokauri Campus

Students in this programme will learn to prepare fully detailed drawings and specifications for the construction of buildings, both manually and using CAD packages.

Graduates may be employed as an architectural technician in small-to-medium-scale building projects, and after an additional period of suitable experience, may be able to work on larger and more complex building projects.

English Language Requirements:

Candidates who have English as a second language are required to have an IELTS (Academic) score of 6.0 across all components; or equivalent.

Find out more at www.wintec.ac.nz/EN1602.

EN1603

New Zealand Diploma in Engineering (Level 6) with strands in Civil, Electrical, Electronic and Mechanical

Duration: 2 years

Start Date: February or July

Location: Hamilton Rotokauri Campus

Students will learn the core knowledge and practical skills required to meet industry needs in their chosen strand of engineering.

Graduates will be able to work as engineering technicians. Strand options available are: Civil, Electrical, Electronic or Mechanical.

This qualification is accredited by Engineering New Zealand.

English Language Requirements:

Candidates who have English as a second language are required to have an IELTS (Academic) score of 6.0, with no individual band score lower than 5.5; or equivalent.

Find out more at www.wintec.ac.nz/engineering.



New Zealand Diploma in Construction (Level 6) with strand in Quantity Surveying

Duration: 2 years

Start Date: February

Location: Hamilton Rotokauri Campus

Students in this programme will learn the practical skills for quantity surveying, which includes estimating and feasibility, quantification, pricing, and financial administration of a project during construction. With experience, students will be able to extend their work to include larger and more complex building projects and carry out tasks related to cost planning and financial control.

Graduates may be employed as a quantity surveyor, building estimator, property consultant or cost engineer.

English Language Requirements:

Candidates who have English as a second language are required to have an IELTS (Academic) score of 6.0, with no individual band score lower than 5.5 across all bands; or equivalent.

Find out more at www.wintec.ac.nz/EN1601.

Bachelor of Engineering Technology (Level 7) with strands in Civil, Electrical and Mechanical

Duration: 3 years

Start Date: February or July

Location: Hamilton Rotokauri Campus

This programme is for those who want a career in engineering. Students will learn theory and practical skills using technology in our engineering labs.

Graduates may be employed as a civil, electrical or mechanical engineering technologist.

This qualification is accredited by Engineering New Zealand.

English Language Requirements:

Candidates who have English as a second language are required to have an IELTS (Academic) score of 6.0 with a minimum of 6.0 in the writing and speaking bands, and a minimum of 5.5 in the reading and listening bands; or equivalent.

Find out more at www.wintec.ac.nz/engineering.

Graduate Diploma in Engineering Technology with strands in: Mechanical, Mechatronics, Power, Water and Water Waste, Roading/Transportation

Duration: 1 year

Start Date: February

Location: Hamilton Rotokauri Campus

This programme is for engineering graduates and working engineering professionals wishing to gain further specialist knowledge in an additional discipline area. The programme also offers the opportunity for those candidates with a relevant engineering background and experience who may wish to gain a formal qualification to recognise that experience.

English Language Requirements:

Candidates who have English as a second language are required to have an IELTS (Academic) score of 6.0 with a minimum of 6.0 in the writing and speaking bands, and a minimum of 5.5 in the reading and listening bands; or equivalent.

Find out more at www.wintec.ac.nz/EN1801.



English Language



To gain entry to the following English Language programmes you will attend an interview to establish your English language skill level and show your likelihood of success. You will be required to take a placement test.

International applicants must have Immigration New Zealand documents to show eligibility to study in New Zealand. Most of our English Language Programmes start in February and July, and are based at the Hamilton City Campus. Level 1 and Level 2 also start in August and September. Please enquire about start dates.

EL1500

New Zealand Certificate in English Language (Foundation) (Level 1)

Duration: 18 weeks
Start Date: February and July
Location: Hamilton City Campus

Students in this programme will be introduced to four English language skills – reading, writing, listening and speaking, and begin to use and understand simple English for everyday situations.

Entry Criteria:

To be eligible for this programme, candidates must be 16 years or older, and must demonstrate appropriate language proficiency, as determined by the Centre for Languages in accordance with Wintec's Academic Regulations. Selection criteria apply.

English Language Requirements:

Placement in this programme is according to language proficiency as determined by the Centre for Languages Placement Test.

Find out more at www.wintec.ac.nz/EL1500.

EL1501

New Zealand Certificate in English Language (Level 1)

Duration: 18 weeks
Start Date: February, July and late August
Location: Hamilton City Campus

This programme is for those who wish to further develop communication skills and English skills in reading, writing, listening and speaking. Students will learn skills to use and understand simple English for everyday, familiar situations, and will develop their face-to-face, independent and online learning study skills.

Entry Criteria:

To be eligible for this programme, candidates must be 16 years or older, and must demonstrate appropriate language proficiency, as determined by the Centre for Languages in accordance with Wintec's Academic Regulations. Selection criteria apply.

English Language Requirements:

Placement in this programme is according to language proficiency as determined by the Centre for Languages Placement Test.

Find out more at www.wintec.ac.nz/EL1501.

EL1502

New Zealand Certificate in English Language (Level 2)

Duration: 18 weeks
Start Date: February, July and late August
Location: Hamilton City Campus

In this programme students will learn language and communication skills at a low intermediate level. Students will develop oral and written English skills to help them use and understand English for familiar situations at Wintec and in New Zealand, and will develop their face-to-face and online learning study skills.

Entry Criteria:

Candidates must be 16 years or older; and produce:
A completed New Zealand Certificate in English Language (Level 1) or equivalent; or must demonstrate appropriate language proficiency, as determined by the Centre for Languages in accordance with Wintec's Academic Regulations.

English Language Requirements:

Placement in this programme is according to language proficiency as determined by the Centre for Languages Placement Test.

Find out more at www.wintec.ac.nz/EL1502.



New Zealand Certificate in English Language (General) (Level 3)

Duration: 18 weeks

Start Date: February and July

Location: Hamilton City Campus

This programme is for those wanting to gain skills needed for tertiary study, training or work in New Zealand. Students will develop oral and written English language skills to understand and use more complex language in an academic or workplace context.

Entry Criteria:

Candidates must be 16 years or older; and produce:

A completed New Zealand Certificate in English Language (Level 2) or equivalent; or an IELTS score of 4.5 in all bands; or equivalent or must demonstrate appropriate language proficiency, as determined by the Centre for Languages in accordance with the Wintec Academic Regulations by completing a placement test.

Find out more at www.wintec.ac.nz/EL1503.

New Zealand Certificate in English Language (Applied)/(Employment or Academic) (Level 3)

Duration: 18 weeks

Start Date: February and July

Location: Hamilton City Campus

This programme is for those needing more advanced skills for tertiary study, training or work in New Zealand. Students will develop oral and written English language skills to understand and use more complex language in an academic or employment context.

Entry Criteria:

Candidates must be 16 years or older; and produce:

A completed New Zealand Certificate in English Language (General) (Level 3) or equivalent; or an IELTS score of 5.0 in all bands; or equivalent or must demonstrate appropriate language proficiency, as determined by the Centre for Languages in accordance with Wintec's Academic Regulations by completing a placement test.

Find out more at www.wintec.ac.nz/EL1803.

New Zealand Certificate in English Language (Academic) (Level 4)

Duration: 18 weeks

Start Date: February and July

Location: Hamilton City Campus

This programme will prepare students for higher tertiary study or training in New Zealand. Students will enhance oral and written English language skills to understand and use more complex language in academic contexts and for most situations in wider life.

Entry Criteria:

Candidates must be 16 years or older; and produce:

A completed New Zealand Certificate in English Language (Applied) (Level 3) or equivalent; or an IELTS score of 5.5 in all bands; or equivalent or must demonstrate appropriate language proficiency, as determined by the Centre for Languages in accordance with the Wintec Academic Regulations by completing a placement test.

Find out more at www.wintec.ac.nz/EL1504.



New Zealand Certificate in English Language (Employment) (Level 4)

Duration: 18 weeks

Start Date: February and July

Location: Hamilton City Campus

Students in this programme will develop oral and written language skills needed to communicate independently and effectively in a range of workplace settings, and will expand their face-to-face, independent, and online learning study skills.

Entry Criteria:

Candidates must be 16 years or older; and produce:

A completed New Zealand Certificate in English Language (Applied) (Level 3) or equivalent; or an IELTS score of 5.5 in all bands; or equivalent or must demonstrate appropriate language proficiency, as determined by the Centre for Languages in accordance with Wintec's Academic Regulations by completing a placement test.

Find out more at www.wintec.ac.nz/EL1804.

New Zealand Certificate in English Language (Academic) (Level 5)

Duration: 18 weeks

Start Date: February and July

Location: Hamilton City Campus

This programme will prepare students for higher level study, training or employment in New Zealand. Students will consolidate oral and written English language skills to use and understand complex English for a wide range of situations, and will expand their face-to-face, independent, and online learning study skills.

Entry Criteria:

Candidates must be 16 years or older; and produce:

A completed New Zealand Certificate in English Language (Level 4) or equivalent; or an IELTS score of 6.0 in all bands; or equivalent or must demonstrate appropriate language proficiency, as determined by the Centre for Languages in accordance with Wintec's Academic Regulations by completing a placement test.

Find out more at www.wintec.ac.nz/EL1505.



Short Courses and Exam Preparation



Summer School English

Duration: 6 weeks, 20 hours per week
Start Date: 6 weeks over December/January

Students in this programme will improve fluency and build confidence, and will develop language learning skills and strategies to improve reading, writing, listening, and speaking.

International applicants must have Immigration New Zealand documents to show eligibility to study in New Zealand.

Find out more at www.wintec.ac.nz/English.

Exam Preparation for IELTS Course

Duration: 9 weeks, 4 hours per week
Start dates: Various
Location: Hamilton City Campus

Students in this programme will improve their language skills in preparation for sitting the IELTS examinations, both General Training and Academic.

Find out more at www.wintec.ac.nz/ELOL234B.

IELTS Test

Wintec offers IELTS tests on Saturdays at the Hamilton City Campus. These tests assess all language skills in reading, writing, listening and speaking. There are two versions of the test, General Training and Academic.

Find out more and view test dates at www.wintec.ac.nz/ielts

Exam Preparation for Cambridge B2 First

Duration: 9 weeks, 4 hours per week
Start Dates: Various
Location: Hamilton City Campus

This course will prepare students for the Cambridge B2 First exams and will cover test overview, practice in four skills, personalised feedback, and tips and advice.

Find out more at www.wintec.ac.nz/fce.

Cambridge B2 First Exam

Selected Dates, Hamilton City Campus

Wintec is a Cambridge Authorised Examination Centre, approved to offer Cambridge English Language assessments within our Centre for Languages. Success in this exam provides pathways into mainstream programmes at Wintec and can be used as evidence of language proficiency for Immigration New Zealand.

Find out more at www.wintec.ac.nz/fceexam.

Exam Preparation for Occupational English Test (OET)

Duration: 9 weeks, 4 hours per week
Start Dates: Various
Location: Hamilton City Campus

The OET is the leading English language test specifically for healthcare professionals and can be used for entry into nursing at Wintec and for post-degree professional registration for both nursing and midwifery.

Wintec is an official testing venue for the OET.

Find out more at www.wintec.ac.nz/oet.

Occupational English Test (OET) Exam

Wintec is an official testing venue for the OET. The OET is the leading English language test specifically designed for healthcare professionals.

Find out more at www.wintec.ac.nz/oet.



Foundation and Pathways



My Career Pathway

New Zealand Certificate in
Foundation Skills (Level 2)

Duration: 1 semester

Start Date: February or July

Location: Hamilton Rotokauri Campus

Students in this project-based programme will learn the practical skills, life skills, and confidence needed to continue training at Wintec, or in the workplace through apprenticeships. Students will have the opportunity to gain credits towards NCEA Level 2, the New Zealand Certificate in Foundation Skills (Level 2), and unit standards in a trade or horticulture pathway of their choice.

My Career Pathway is offered in the following three strands:

- Manufacturing and Technology: Automotive, Mechanical and Electrical Engineering
- Construction and Infrastructure: Building, Electrical Engineering, Plumbing and Gasfitting
- Horticulture: Horticulture, Arboriculture and Landscape Construction

English Language Requirements:

Candidates who have English as a second language are required to have an IELTS (Academic) score of 5.5, with no individual band score less than 5.0; or equivalent.

Find out more at www.wintec.ac.nz/mcp.

Te Ara Pūtake

My Academic Pathway

New Zealand Certificate in
Study and Career
Preparation (Level 4)

Duration: 1 semester

Start Date: February or July

Location: Hamilton City Campus

This programme is for those who want to begin study, but need to build confidence or brush up on skills. Students will choose from five pathways that align with their career goals, including: health, social practice, media arts, early childhood, and the open pathway for general subjects and skills. Students will gain essential academic knowledge, capabilities, and skills needed to succeed at higher levels of study.

Graduates may be able to progress to further study and training.

English Language Requirements:

Candidates who have English as a second language are required to have an IELTS (Academic) score of 5.5, with no individual band score less than 5.0; or equivalent. You may also be required to participate in an interview.

Find out more at www.wintec.ac.nz/EF1804.



Health and Social Practice



Te Ara Pūtake My Academic Pathway

New Zealand Certificate
in Study and Career
Preparation (Level 4)

Duration: 1 semester

Start Date: February or July

Location: Hamilton City Campus

This pathway prepares students for further study in nursing, midwifery, occupational therapy, sports science or other health related programmes.

Students will learn about anatomy and physiology of the human body, wellness and human development. This pathway is offered in both semester one and two.

Graduates may be able to progress to further study and training.

English Language Requirements:

Candidates who have English as a second language are required to have an IELTS (Academic) score of 5.5, with no individual band score less than 5.0; or equivalent. You may also be required to participate in an interview.

Find out more at www.wintec.ac.nz/EF1804.

Nēhi Whakauru Enrolled Nursing

New Zealand Diploma in
Enrolled Nursing (Level 5)

Duration: 18 months

Start Date: February or July

Location: Hamilton City Campus or Thames

This programme is for those who want to work in clinical settings as an enrolled nurse and a valued member of the health team.

Graduates will be eligible to apply to the Nursing Council of New Zealand to sit an exam to be registered as an enrolled nurse and will then be able to practice under the direction of a registered nurse.

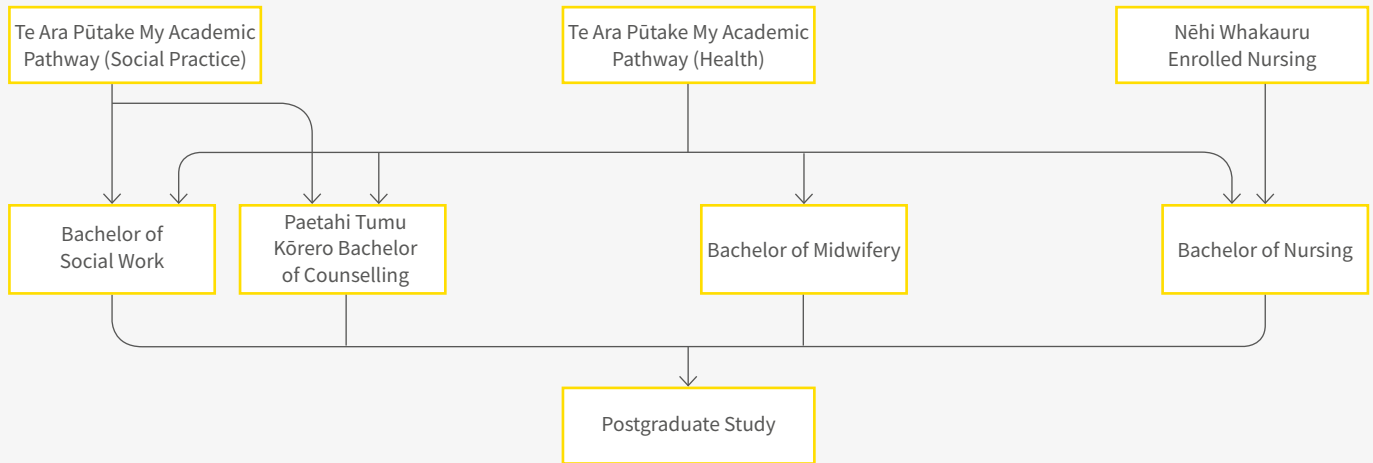
English Language Requirements:

Candidates who have English as a second language are required to have an IELTS (Academic) score of 6.5 across all bands; or equivalent.

Find out more at www.wintec.ac.nz/HS1702.



Study Pathways



HS0114

Design Factory Option

HL0901

Bachelor of Social Work

Duration: 4 years

Start Date: February

Location: Hamilton City Campus

This programme is for those who want to support, empower and advocate for individuals, families and communities; and assist people in their community. Students will gain the skills to provide advice, advocacy and support to individuals or groups to empower and help them realise their full potential, and be able to function independently.

Graduates will be able to enter the social work workforce in a variety of social work fields such as schools, hospitals, community groups, or government organisations, at a beginning practitioner level with provisional registration with the Social Workers Registration Board.

English Language Requirements:

Candidates who have English as a second language are required to have an IELTS (Academic) score of 6.5 across all bands; or equivalent.

Find out more at www.wintec.ac.nz/HS0114.

Bachelor of Midwifery

Duration: 3 years

Start Date: February

Location: Hamilton City Campus

This programme is for those who want to learn to confidently nurture and care for women through pregnancy, childbirth, and up to the first six weeks following birth. Students will gain a wide range of knowledge and skills to work autonomously, be responsible for the wellbeing of women and babies, and support families safely and appropriately.

Clinical placements and tutorials are held in regional hubs (Whaktane, Gisborne, Hastings, Rotorua, Tauranga and Hamilton), so that students can complete most of their clinical experience close to home. Compulsory on-campus block courses are held in Hamilton throughout the programme.

Graduates will be eligible to sit the National Midwifery Examination to become a registered midwife.

English Language Requirements:

Candidates who have English as a second language are required to have an IELTS (Academic) score of 7.0 with no less than 6.5 in writing and reading and 7.0 in speaking and listening, or equivalent.

Find out more at www.wintec.ac.nz/HL0901.



Paetahi Tumu Kōrero Bachelor of Counselling

Duration: 3 years
Start Date: February
Location: Hamilton City Campus

Students in this programme will develop the flexible and professional skills required to work within the complex and interprofessional social service and health communities. It includes a mental health and addictions counselling practice focus. Placement is a significant element of this programme.

Graduates are prepared to enter the counselling workforce at a beginner practitioner level.

English Language Requirements:
 Candidates who have English as a second language are required to have an IELTS (Academic) score of 6.5 across all bands; or equivalent.

Find out more at www.wintec.ac.nz/HS1602.

Bachelor of Nursing

Duration: 3 years
Start Date: February or July
Location: Hamilton City Campus

This programme is for those who want to become a registered nurse with the knowledge and skills to practise in a variety of healthcare settings.

Graduates will sit a Nursing Council of New Zealand registration exam to become a registered nurse.

English Language Requirements:
 Candidates who have English as a second language are required to have an IELTS (Academic) score of 6.5 across all bands, or equivalent.

Find out more at www.wintec.ac.nz/HL0902.

Postgraduate Diploma in Nursing

Duration: 1 year
Start Date: February or July
Location: Hamilton City Campus
Exit Postgraduate Certificate Qualification: in Nursing on successful completion of 2 modules

This programme provides registered nurses with the opportunity to extend their clinical knowledge and skills in a specific area of practice. It is delivered through a combination of block courses and online.

Graduates may be employed in advanced nursing practice positions, management, research, or independent practice.

English Language Requirements:
 Candidates who have English as a second language are required to have an IELTS (Academic) score of 7.0, with no band score less than 7.0; or equivalent.

Find out more at www.wintec.ac.nz/NU0010.



These programmes are designed for professionals in the fields of health and social practice which include: occupational therapy, social work, counselling, human services, physiotherapy, nursing, and midwifery.

They offer learning opportunities designed to inform practice and develop valued knowledge in Treaty of Waitangi-based practice. . Students will learn and grow professionally while undertaking interactive and experiential-based education alongside senior practitioners in health and social practice.

Entry Criteria:

An undergraduate degree assessed as relevant by the Team Manager.

International students are not able to directly enrol in these courses unless they have current registration with the relevant New Zealand professional body. For more information, contact international@wintec.ac.nz

English Language Requirements:

Candidates whose first language is neither English nor Māori are required to have an IELTS (Academic) score of 7.0 across all bands or equivalent and will be required to demonstrate the likelihood of being able to successfully achieve programme learning outcomes.

HS1103

Postgraduate

Postgraduate Certificate in Health and Social Practice

Duration: 6 months

Start Date: February or July

Location: Hamilton City Campus or Bay of Plenty District Health Board Education Centre, Tauranga

Find out more at www.wintec.ac.nz/HS1103.

HS1102

Postgraduate

Postgraduate Diploma in Health and Social Practice

Duration: 1 year

Start Date: February or July

Location: Hamilton City Campus or Bay of Plenty District Health Board Education Centre, Tauranga

Find out more at www.wintec.ac.nz/HS1102.

HS1105

Postgraduate

Postgraduate Certificate in Professional Supervision

Duration: 6 months

Start Date: February or July

Location: Hamilton City Campus

Find out more at www.wintec.ac.nz/HS1105.

HS1102

Postgraduate

Postgraduate Diploma in Health and Social Practice (Professional Supervision)

Duration: 1 year

Start Date: February or July

Location: Hamilton City Campus or Tauranga

Find out more at www.wintec.ac.nz/HS1102.



Master of Nursing

Duration: 1 year

Start Date: February or July

Location: Hamilton City Campus

This programme provides opportunities for role development in advanced nursing practice. It involves theoretical knowledge development as well as clinical and ethical learning experiences, with an aim to build capacity to respond to increasingly diverse populations and complex health environments. There are three options for completing this programme:

- Nurse Practitioner
- Advanced Nursing Practice
- Rangahau Research Dissertation

Graduates may be employed in advanced nursing practice positions such as nurse practitioner, as management, research, education, clinical leaders, independent practice, or enter into further study at Doctorate level.

English Language Requirements:

Candidates who have English as a second language are required to have an IELTS (Academic) score of 7.0 across all bands; or equivalent.

Find out more at www.wintec.ac.nz/HL0502.

Master of Professional Practice

Duration: 1.5 years

Start Date: February or July

Location: Hamilton City Campus

This programme will assist practitioners in gaining advanced knowledge and skills to effectively manage the demands of rapidly changing, and increasingly complex health and social care practice environments.

Graduates may be employed as managers, clinical educators, or professional supervisors to undertake a higher-level qualification focused on their area of practice.

English Language Requirements:

Candidates who have English as a second language are required to have an IELTS (Academic) score of 7.0 across all bands; or equivalent.

Find out more at www.wintec.ac.nz/HS1701



Hospitality and Cookery



Culinary Arts Year 1

New Zealand Certificate in Cookery (Level 4)

Duration: 1 year

Start Date: February or July

Location: Hamilton Rotokauri Campus

Students in this programme will develop cookery skills to prepare, cook and present food, employing complex preparation and presentation techniques.

Graduates may be employed as a chef producing sophisticated dishes in a professional kitchen.

This programme will also give students internationally recognised City & Guilds qualifications.

English Language Requirements:

Candidates who have English as a second language are required to have an IELTS (Academic) score of 5.5, with no individual band score lower than 5; or equivalent.

Find out more at www.wintec.ac.nz/RS1601.

Culinary Arts Year 2

New Zealand Diploma in Cookery (Advanced) (Level 5) with strand in Cookery

Duration: 1 year

Start Date: February or July

Location: Hamilton Rotokauri Campus

Students in this programme will learn to plan and produce a broad range of larger dishes, meat, poultry and fish dishes using advanced preparation, cookery and preparation techniques.

Graduates may be employed as chefs in senior positions producing advanced dishes in a professional kitchen.

This programme will also give students internationally recognised City & Guilds qualifications.

English Language Requirements:

Candidates who have English as a second language are required to have an IELTS (Academic) score of 5.5, with no individual band score lower than 5.0; or equivalent.

Find out more at www.wintec.ac.nz/RS1701.



Horticulture, Landscape and Tree Care



Diploma in Landscape Practice

New Zealand Diploma in Landscape (Level 5) with strands in Design and Construction

Duration: 1 year

Start Date: February

Location: Hamilton Gardens Campus

Students in this programme will advance their skills in a chosen strand of either Landscape Design or Landscape Construction. A part-time industry work placement is an integral part of this programme for practical, hands-on learning. Graduates may be employed as a landscape designer, landscape contract manager, or landscape team leader.

English Language Requirements:

Candidates who have English as a second language are required to have an IELTS (Academic) score of 5.5, with no individual band score lower than 5.0; or equivalent.

Find out more at www.wintec.ac.nz/SX1802.

Diploma in Landscape Design and Management

New Zealand Diploma in Landscape (Level 6)

Duration: 1 year

Start Date: February 2020

Location: Hamilton Gardens Campus

This programme gives students the chance to develop their own independent design process and style through project work in more specialised areas. Through work placement and on the job training, students will gain practical interpersonal skills, and will benefit from mentorship from professionals in industry.

Graduates may be employed in a range of landscape design professions or landscape project management related roles.

English Language Requirements:

Candidates who have English as a second language are required to have an IELTS (Academic) score of 6, with no individual band score lower than 5.5; or equivalent.

Find out more at www.wintec.ac.nz/SX1901.

Diploma in Arboriculture

New Zealand Diploma in Arboriculture (Level 6)

Duration: 1 year

Start Date: February

Location: Hamilton Gardens Campus

This programme provides further project work for students to advance their skills into more specialised areas, and develop their independent assessment, contractual and research, and process skill. Through work integration, students are able to immerse themselves in the real-life work environment, gaining practical interpersonal skills and mentorship from professionals in industry.

Graduates may be employed in a range of arboriculture professions and tree management related roles.

English Language Requirements:

Candidates who have English as a second language are required to have an IELTS (Academic) score of 6, with no individual band score lower than 5.5; or equivalent.

Find out more at www.wintec.ac.nz/SX1902.



Information Technology



New Zealand Certificate in Information Technology (Level 5)

Duration: 1 semester
Start Date: February or July
Location: Hamilton City Campus

This programme will provide students with a broad understanding of the core concepts and skills in information technology, including technical support, information systems, integration design, and software development.

Graduates may be employed in a variety of entry level positions in the Information Technology industry or go onto further study.

English Language Requirements:
 Candidates who have English as a second language are required to have an IELTS (Academic) score of 5.5, with no individual band score lower than 5.0; or equivalent.

Students in this programme are encouraged to bring their own device (a laptop). Find out more at www.wintec.ac.nz/BYOD

Find out more at www.wintec.ac.nz/BI1606.

New Zealand Diploma in Information Technology Technical Support (Level 5)

Duration: 1 year
Start Date: February or July
Location: Hamilton City Campus

This programme will provide students with the knowledge and skills for a career in information technology. It is equivalent to the first year of the Bachelor of Applied Information Technology, so if students choose to progress to the degree they will only need to undertake another two years of study.

Graduates may be employed in roles such as computer technician, help desk and technical support officer, entry-level network administrator, network engineer, and applications support analyst with a particular focus on technical support.

English Language Requirements:
 Candidates who have English as a second language are required to have an IELTS (Academic) score of 5.5, with no individual band score lower than 5.0; or equivalent.

Students in this programme are encouraged to bring their own device (a laptop). Find out more at www.wintec.ac.nz/BYOD

Find out more at www.wintec.ac.nz/BI1607.

Bachelor of Applied Information Technology

Duration: 3 years
Start Date: February or July
Location: Hamilton City Campus

Students in this programme will gain a strong foundation of knowledge across a broad range of different Information Technology skills, and an advanced level of expertise in one of four selected specialisations: Network Engineering, Software Engineering, Database Architecture/Administration, or Multimedia and Web Development.

Graduates may be employed as network engineers, software engineers, multimedia and web developers, database architects, business/systems analysts, IT project managers, IT managers, or network/cyber-security professionals.

English Language Requirements:
 Candidates who have English as a second language are required to have an IELTS (Academic) score of 6.0 with no individual band score lower than 5.5; or equivalent.

Students in this programme are encouraged to bring their own device (a laptop). Find out more at www.wintec.ac.nz/BYOD

Find out more at www.wintec.ac.nz/BI1601.



Graduate Diploma in Applied Information Technology

with specialisations in Database Administration, Database Development, Network Engineering, Software Engineering, Web Development

Duration: 1 year

Start Date: April or November, or February or July (for those with an approved Information Technology qualification)

Location: Hamilton City Campus

Students in this programme will learn the knowledge and skills to deliver quality information technology services, and develop effective communication skills to support and enhance a range of organisations and industries. Students can choose to specialise in one of the following five specialisations: Database Administration, Database Development, Network Engineering, Software Engineering, or Web Development.

Graduates may be employed as database administrators, database developers, network engineers, software engineers, web developers, IT project managers, IT managers, and security specialists.

English Language Requirements:

Candidates who have English as a second language are required to have an IELTS (Academic) score of 6.0 with no individual band score lower than 5.5; or equivalent.

Find out more at www.wintec.ac.nz/BI1804.

Postgraduate Certificate in Applied Information Technology

Duration: 1 semester

Start Date: February or July

Location: Hamilton City Campus

This programme enables students to undertake a short programme of study in order to augment their knowledge and skills, and to obtain employment or advance their careers.

Graduates may be employed in roles in business analysis, business intelligence, data analytics, information security and forensics, IT management, IT project management, software development, and software quality assurance.

English Language Requirements:

Candidates who have English as a second language are required to have an IELTS (Academic) score of 6.5, with no individual band score lower than 6.0; or equivalent.

Find out more at www.wintec.ac.nz/BI1702.

Postgraduate Diploma in Applied Information Technology

Duration: 1 year

Start Date: February or July

Location: Hamilton City Campus

This programme enables students to undertake an advanced programme of study in order to augment their knowledge and skills, and to obtain employment or advance their careers. There is a possibility of internships for those who successfully meet the requirements.

Graduates may be employed in positions of responsibility in business analysis, business intelligence, data analytics, information security and forensics, IT management, project management, software development, and software quality assurance.

English Language Requirements:

Candidates who have English as a second language are required to have an IELTS (Academic) score of 6.5, with no individual band score lower than 6.0; or equivalent.

Find out more at www.wintec.ac.nz/BI1703.



Postgraduate Diploma in Applied Informatics

Duration: 1 year

Start Date: February or July

Location: Hamilton City Campus

This programme provides a pathway for professional development for graduates with a relevant degree. Students will learn about the social, cultural, and organisational settings in which information is used. Areas of specialisation could include e-commerce, strategic planning, organisational behaviour, and services management.

Graduates may undertake advanced studies in informatics.

English Language Requirements:

Candidates who have English as a second language are required to have an IELTS (Academic) score of 6.5, with no individual band score lower than 6.0; or equivalent.

Find out more at www.wintec.ac.nz/IT1101.

Master of Applied Information Technology

Duration: 18 months

Start Date: February or July

Location: Hamilton City Campus

This programme enables students to undertake an extended programme of study, combining coursework with research, in order to prepare for further study or obtain a more senior position in their field of information technology. There is a possibility of internships for those who successfully meet the requirements.

Graduates may be employed in positions of responsibility in business analysis, business intelligence, data analytics, information security and forensics, information technology management, project management, software development, and software quality assurance; or enter into further tertiary study at Doctorate level.

English Language Requirements:

Candidates who have English as a second language are required to have an IELTS (Academic) score of 6.5, with no individual band score lower than 6.0; or equivalent.

Find out more at www.wintec.ac.nz/BI1704.



Media Arts



Te Ara Pūtake My Academic Pathway

New Zealand Certificate
in Study and Career
Preparation (Level 4)

Duration: 1 semester
Start Date: February or July
Location: Hamilton City Campus

Creative Industries Pathway

This pathway prepares students for further study in the creative industries in design, communication, art, and music. Working with specialists in the School of Media Arts, students will learn relevant tools and technology for their craft, and gain knowledge and understanding of the creative process. Students will develop and apply their skills in projects and be given the opportunity to exhibit their work in a showcase event.

English Language Requirements:

Candidates who have English as a second language are required to have an IELTS (Academic) score of 5.5, with no individual band score less than 5.0; or equivalent. You may also be required to participate in an interview.

Find out more at www.wintec.ac.nz/EF1804.

New Zealand Diploma in Journalism (Level 5)

Duration: 1 year
Start Date: February
Location: Hamilton City Campus

Students in this programme will develop news sourcing, writing and publishing skills; as well as technical skills in photography and videography. Students will put these skills into practice publishing regularly in the Wintec online newspaper, The Waikato Independent, and through projects with industry.

Graduates may be employed in entry level journalist positions.

This programme is available in conjunction with the Bachelor of Communication.

English Language Requirements:

Candidates who have English as a second language are required to have an IELTS (Academic) score of 6.5 across all bands; or equivalent.

Find out more at www.wintec.ac.nz/BM1103.

Bachelor of Communication (Level 7)

Duration: 3 years
Start Date: February (for mid-year study options please contact the School of Media Arts)
Location: Hamilton City Campus

This degree has been designed for students to develop skills to thrive in the media and communications industry. The programme focuses on media communication and marketing craft, along with critical thinking, creative media, content production, and professional practice. Students will have the opportunity to undertake collaborative real-world projects with students from other disciplines, and with industry.

The degree has pathways in creative media and digital marketing. A hybrid screen arts and production pathway is also available.

Graduates may be employed in a range of communication, media, and creative related roles such as journalist, communications advisor, content creator, content curator, or public relations consultant.

English Language Requirements:

Candidates who have English as a second language are required to have an IELTS (Academic) score of 6.0 with no individual band score lower than 5.5; or equivalent.

Find out more at www.wintec.ac.nz/BM1801.



Bachelor of Contemporary Art (Level 7)

Duration: 3 years

Start Date: February (for mid-year study options please contact the School of Media Arts)

Location: Hamilton City Campus

This degree is for those who want to engage in fields of art including painting, photography, screen-based media, installation, street art, sculpture, curation or illustration. Students will study in a community where individual vision and personality are valued as a relevant contribution to our society.

With 24-hour access to studios and workshops, students will have the opportunity to develop their own personal art practice, as well as undertake real-world projects both with students from other disciplines, and with industry.

English Language Requirements:

Candidates who have English as a second language are required to have an IELTS (Academic) score of 6.0 with no individual band score lower than 5.5; or equivalent.

Additional selection criteria applies.

Find out more at www.wintec.ac.nz/BM1902.



Bachelor of Design (Level 7)

Duration: 3 years

Start Date: February (for mid-year study options please contact the School of Media Arts)

Location: Hamilton City Campus

This degree will develop students' capabilities in creativity, innovation, and design. Students will learn to apply creative problem-solving and design skills in multiple professional domains.

As part of this programme, students will have the opportunity to undertake collaborative real-world projects with students from other disciplines and industry.

The degree has pathways with endorsements in Visual Communication (Graphic Design) and Spatial Design*.

Graduates may be employed as an illustrator, graphic designer, web and interactive designer, motion animator, UX designer, residential or commercial spatial designer.

*Spatial Design endorsement subject to NZQA approval.

English Language Requirements:

Candidates who have English as a second language are required to have an IELTS (Academic) score of 6.0 with no individual band score lower than 5.5, or equivalent.

Additional selection criteria applies.

Find out more at www.wintec.ac.nz/BM1802.



Bachelor of Music and Performing Arts (Level 7)

Duration: 3 years

Start Date: February (for mid-year study options please contact the School of Media Arts)

Location: Hamilton City Campus

This degree is for those who want to find their own musical voice and actively engage and learn in a flexible and authentic environment. Students will have 24-hour access to recording studios and practice/rehearsal spaces, including fully equipped production edit suites. Students will have the opportunity to undertake collaborative real-world projects with students from other disciplines, and with industry.

The degree has pathways in Performance, Music Production, Composition and Theatre.

Graduates may be employed as audio engineers, composers, performers, and a range of related creative roles.

English Language Requirements:

Candidates who have English as a second language are required to have an IELTS (Academic) score of 6.0 with no individual band score lower than 5.5; or equivalent.

Additional selection criteria applies.

Find out more at www.wintec.ac.nz/BM1901.



Graduate Diploma in Communication (Level 7)

with endorsement in Public Relations/Advertising

Duration: 1 year

Start Date: February or July

Location: Hamilton City Campus or online

This programme is for those who want to enhance their degree or work experience with knowledge and skills in public relations, advertising, and media practices. Students will work on live projects with real clients, with support from tutors with industry experience.

Graduates may be employed in a range of communication, media, and creative related roles such as journalist, communications advisor, content creator, content curator, or public relations consultant.

English Language Requirements:

Candidates who have English as a second language are required to have an IELTS (Academic) score of 6.0 across all bands; or equivalent.

Find out more at www.wintec.ac.nz/CO0005.

Bachelor of Media Arts (Honours) (Level 8)

Duration: 1 year

Start Date: February

Location: Hamilton City Campus

This is a postgraduate programme for students who wish to undertake an in-depth investigation into their chosen field, within a research-focused learning environment. Students will have the opportunity to respond to new developments in the communication, design, music, and visual arts fields.

Graduates may be employed in a range of professional creative fields including as a designer, filmmaker, artist, advertising photographer, art director, teacher, cinematographer, editorial photographer, environmental designer, exhibition designer, film editor, film producer, freelance photographer, graphic designer, illustrator, photojournalist, scriptwriter, web designer, songwriter, or composer.

English Language Requirements:

Candidates who have English as a second language are required to have an IELTS (Academic) score of 6.5, with no individual band score lower than 6.0; or equivalent.

Additional selection criteria applies.

Find out more at www.wintec.ac.nz/BM0001.

Master of Arts (Level 9)

with endorsements in Design, Music, Visual Arts and Communication

Duration: 1 year

Start Date: February or July or October

Location: Hamilton City Campus

This programme provides students with postgraduate study leading towards professional and higher academic practice. Students will learn within a research-focused learning environment, and will extend their domain of practice through research in their chosen area.

Graduates may be employed in a range of professional creative fields including as an artist, musician, sound designer, composer, song writer, filmmaker, digital designer, graphic designer, educator, advertising creative, copywriter, journalist, events coordinator, marketing communications, public relations, or educator, or move into further tertiary study at Doctorate level.

English Language Requirements:

Candidates who have English as a second language are required to have an IELTS (Academic) score of 6.5, with no individual band score lower than 6.0; or equivalent.

Additional selection criteria applies.

Find out more at www.wintec.ac.nz/BM0501.



Science (Applied)



Applied Science 3

New Zealand Certificate in Applied Science (Level 3)

Duration: 1 semester

Start Date: February or July

Location: Hamilton City Campus and Hamilton Rotokauri Campus

This programme is a starting point for those interested in a career in science and/or engineering. This programme provides a pathway for entry into higher level science programmes, or to the New Zealand Diploma in Engineering, for those students who don't already meet the academic entry requirements.

Graduates will be able to progress to further study in applied science or engineering, or work in entry-level assistant operation positions in related fields.

English Language Requirements:

Candidates who have English as a second language are required to have an IELTS (Academic) score of 5.0 across all bands; or equivalent.

Find out more at www.wintec.ac.nz/SX1706.

Applied Science 5

New Zealand Diploma in Applied Science (Level 5)

Duration: 1 year

Start Date: February or July

Location: Hamilton City Campus

Students in this programme will learn theory and technical knowledge in a range of natural and physical sciences. Areas of study include chemistry, biology, microbiology, food nutrition, and environmental sciences.

Graduates may be employed in routine operational positions in science-related fields of work including manufacturing and regulatory industries, field work, research and development, or continue onto higher levels of study.

English Language Requirements:

Candidates who have English as a second language are required to have an IELTS (Academic) score of 5.5, with no individual band score lower than 5.0; or equivalent.

Find out more at www.wintec.ac.nz/SX1709.

Applied Science 6

New Zealand Diploma in Applied Science (Level 6)

Duration: 1 year

Start Date: February

Location: Hamilton City Campus

Students in this programme will learn theoretical and technical knowledge in a specialised field of science such as food technology, environmental technology, or biotechnology.

Graduates may be employed in technical positions in a specialised field of science in manufacturing and regulatory industries, field work, research and development, or continue onto higher levels of study.

English Language Requirements:

Candidates who have English as a second language are required to have an IELTS (Academic) score of 6.0, with no individual band score lower than 5.5; or equivalent.

Find out more at www.wintec.ac.nz/SX1707.

Bachelor of Technology

Duration: 3 years

Start Date: February or July

Location: Hamilton City Campus

Students in this programme will develop a broad and practical foundation in science and technology, with a specific endorsement in Biotechnology, Environmental Technology, or Food Technology. Students will participate in group work, projects, student investigations, presentations, field trips and other interactive activities, and complete an industry-based project. Throughout the degree, students can base their assignments on their specific area of interest.

Graduates will be able to pursue careers in many areas including research and animal science, environmental management and ecology,

biosecurity and conservation; as well as food technology, engineering, and health and safety.

English Language Requirements:

Candidates who have English as a second language are required to have an IELTS (Academic) score of 6.0, with no individual band score lower than 5.5; or equivalent.

Find out more at www.wintec.ac.nz/SC0901.



Sport Science and Human Performance



Graduate Diploma in Sport and Exercise Science

Duration: 1 year

Start Date: February or July

Location: Hamilton Rotokauri Campus

This programme is designed for students who wish to pursue further study in the area of sport and exercise science. This programme will help students to pursue a career in the sport and exercise science area, or the programme can be used to complement a student's first degree with specific sports and exercise science knowledge and skills.

Students will be able to specialise in one of the following key pathways:

- Strength and conditioning
- Clinical exercise science

This programme may lead into postgraduate study including a Master of Science (Sport and Exercise Science).

English Language Requirements:

Candidates who have English as a second language are required to have an IELTS (Academic) score of 6.0, with no individual band score lower than 5.5; or equivalent.

Find out more at www.wintec.ac.nz/SP0202.

Bachelor of Sport and Exercise Science

Duration: 3 years

Start Date: February or July

Location: Hamilton Rotokauri Campus

Students in this programme will gain the skills and knowledge to become a well-rounded practitioner of sport and exercise science.

The programme includes physical education, coaching, exercise physiology, sport nutrition, sport psychology, biomechanics, sport rehabilitation, and personal training. Students will also have the opportunity to undertake research projects with clients and work alongside industry professionals.

Students will have the opportunity to undertake collaborative real-world projects with students from other disciplines, and with industry.

Graduates may be employed in a wide range of areas within the sport science, health and fitness, and education sectors including local and regional sports organisations, health and fitness centres, community health, and personal and team fitness training.

English Language Requirements:

Candidates who have English as a second language are required to have an IELTS (Academic) score of 6.0, with no individual band score lower than 5.5; or equivalent.

Find out more at www.wintec.ac.nz/SC9501.



Bachelor of Sport and Exercise Science (Honours)

Duration: 1 year

Start Date: February

Location: Hamilton Rotokauri Campus

This programme is for those who would like to extend their undergraduate degree with specialist research skills and knowledge in sport and exercise science. The programme is research intensive.

Graduates may be employed as a tertiary teacher, in research and sport consultancy, and more specialised roles in sport science at regional and national level, or enter into further tertiary study at Master or Doctorate level.

English Language Requirements:

Candidates who have English as a second language are required to have an IELTS (Academic) score of 6.5, with no individual band score lower than 6.0; or equivalent.

Find out more at www.wintec.ac.nz/SP0202.

Postgraduate Diploma in Sport and Exercise Science

Duration: 1 year

Start Date: February or July

Location: Hamilton Rotokauri Campus

This programme is for those who want to extend their knowledge in sport and exercise science, and is designed to build on undergraduate degree or equivalent industry experience with further specialist knowledge.

Graduates may be employed in specialised roles in sport science research, the fitness industry, individual and team sport training and consultancy, and regional and national sporting organisation positions.

English Language Requirements:

Candidates who have English as a second language are required to have an IELTS (Academic) score of 6.5, with no individual band score lower than 6.0; or equivalent.

Find out more at www.wintec.ac.nz/SP0201.

Master of Science (Sport and Exercise Science)

Duration: 2 years

Start Date: February

Location: Hamilton Rotokauri Campus

This programme is designed for those who wish to extend their undergraduate degree with further specialist skills and knowledge. It is most suited to those who are wanting to continue onto a Doctoral programme or into higher level positions in the workforce.

Graduates may be employed as a tertiary teacher, research and sport consultant, or an individual and team sport trainer and conditioner; or enter into further tertiary study at Doctorate level.

English Language Requirements:

Candidates who have English as a second language are required to have an IELTS (Academic) score of 6.5, with no individual band score lower than 6.0; or equivalent.

Find out more at www.wintec.ac.nz/SP0203.





Research and Applied Innovation



Postgraduate Certificate in Innovation

Duration: 1 semester

Start Date: February or June

Location: Hamilton City or Rotokauri Campus

This programme is for those who want to build on their enterprise experience, with flexibility in time or place of study. Students will gain skills and expertise highly valued in a workplace or research environment, including developing an understanding of the transdisciplinary research approach and the critical reframing of a real-world problem.

Graduates will be able to use this qualification for their professional development and to develop the skills required to undertake new roles within a business or other enterprise group.

English Language Requirements:

Candidates who have English as a second language are required to have an IELTS (Academic) score of 6.5, with no individual band score lower than 6.0; or equivalent.

Find out more at www.wintec.ac.nz/RI1601.

Master of Applied Innovation

Duration: 18 months

Location: Hamilton City Campus

Students in this programme will advance their ability to innovate in the workplace and immerse themselves into the enterprise environment. Students will learn to research and develop projects and lead change initiatives in an operational environment. This programme offers an accessible academic and professional career development opportunity in research and innovation at postgraduate level, relevant to all disciplines.

Graduates will be able to use this qualification for their professional development and to develop the skills required to undertake new roles within a business or other enterprise group, or enter into further tertiary study at Doctorate level.

English Language Requirements:

Candidates who have English as a second language are required to have an IELTS (Academic) score of 6.5, with no individual band score lower than 6.0; or equivalent.

Find out more at www.wintec.ac.nz/RI1602.



Veterinary Nursing and Rural Animal Technology



Rural Animal Technician (Level 5)

New Zealand Certificate in Animal Technology (Level 5) with strand in Rural Animal Technology

Duration: 1 year

Start Date: February or July

Location: Hamilton Rotokauri Campus

This programme is for those seeking a career in a veterinary-related field, with rural animals.

This is a practical programme, including approximately 280 hours of industry placement.

Graduates will be able to assist veterinarians in both large animal and/or mixed animal practices, and in the field; or work independently as a rural animal technician.

English Language Requirements:

Candidates who have English as a second language are required to have an IELTS (Academic) score of 6.0, with no band score less than 5.5; or equivalent.

Find out more at www.wintec.ac.nz/SX1603.

Veterinary Nursing Assistant (Level 5)

New Zealand Certificate in Animal Technology (Level 5) with strand in Veterinary Nurse Assistant

Duration: 1 year

Start Date: February

Location: Hamilton Rotokauri Campus

This programme is for those with previous animal handling experience who wish to work in a veterinary-related field or in a veterinary clinic. Students will develop skills in the care, management, handling, and nursing of a range of companion animals. This programme is the first year of a two-year veterinary nursing programme.

Graduates will be able to provide assistance to veterinarians and veterinary nurses in a veterinary clinic, and perform some tasks independently.

English Language Requirements:

Candidates who have English as a second language are required to have an IELTS (Academic) score of 6.0, with no band score less than 5.5; or equivalent.

Find out more at www.wintec.ac.nz/SX1604.

Veterinary Nursing (Level 6)

New Zealand Diploma in Veterinary Nursing (Level 6)

Duration: 1 year

Start Date: February

Location: Hamilton Rotokauri Campus

Students in this programme will develop advanced skills in the care, management, handling, and nursing of a range of companion animals in a clinical environment. Students will learn to manage patients and clients, and follow protocols in all aspects of clinical veterinary practice. This programme includes 240 hours of work experience.

Graduates may be employed in a veterinary clinic as a veterinary nurse.

English Language Requirements:

Candidates who have English as a second language are required to have an IELTS (Academic) score of 6.0 with no individual band score lower than 6.0; or equivalent.

Find out more at www.wintec.ac.nz/SX1801.



Important Information

Code of Practice

When students come to study at Wintec, we have an important responsibility to ensure that those students are well informed, safe and properly cared for. Wintec is a signatory to The Education (Pastoral Care of International Students) Code of Practice 2016, published by the New Zealand Ministry of Education. You can read more about the Code at the New Zealand Qualifications Authority website at www.nzqa.govt.nz/providers-partners/education-code-of-practice/

Accident Insurance

The Accident Compensation Corporation (ACC) provides injury and accident insurance for all New Zealand citizens and temporary visitors to New Zealand, but you may still be liable for all other medical and related costs. Further information visit the ACC website at www.acc.co.nz

Additional Costs

It is important that you pay for the full costs of all services requested along with your tuition fees payment. A receipt will only be issued once full payment has been received by Wintec. At the time of printing your total living expenses required per year for visa purposes is \$15,000 NZD. Some programmes have additional expenses such as books, stationery, uniforms, catering equipment and assignment materials. Prices vary so please enquire on application to a programme. Textbooks are usually between \$75 - \$110 each and some courses have additional independent activity fees.

Attendance

You must attend 100% of your classes. If you miss a class, obtain a medical certificate or other evidence to explain your absence and give it to your tutor as soon as you return to class. Missing class may affect your visa renewal.

Complaints Process

You can make an internal complaint here:
<https://wintecprodpublicwebsite.blob.core.windows.net/sitefinity-storage/docs/default-source/student-life-documents/policies-and-forms-documents/forms/formal-complaint-form.pdf>

If a student complaint is not resolved by Wintec's internal process you can contact the New Zealand Qualifications Authority (NZQA) who will manage the student complaint. View more information here:
www.nzqa.govt.nz/assets/Providers-and-partners/Code-of-Practice/int-students-make-a-complaint.pdf

EER Reviews of Tertiary Education Organisations

NZQA assesses the standard of education for tertiary education organisations through a regular system of External Evaluation and Review (EER). Through periodic EER, tertiary education organisations are held accountable to their students, employers, funders, quality assurance bodies and other interested parties. Read Wintec's EER report for 2019 here: www.nzqa.govt.nz/nqfdocs/provider-reports/6019.pdf

Eligibility for Health Services

Most international students are not entitled to publicly funded health services while in New Zealand. If you receive medical treatment during your visit, you may be liable for the full costs of that treatment. Full details on entitlements to publicly funded health services are available through the Ministry of Health, and can be viewed on their website at www.moh.govt.nz.

International English Language Test System (IELTS)

For information on IELTS please refer to the Academic Requirements. In all cases, IELTS assessments must be less than 2 years old at the time of application.

Immigration

Full details of immigration requirements, advice on rights to employment in New Zealand while studying, and reporting requirements are available from Immigration New Zealand (INZ), and can be viewed on their website at www.immigration.govt.nz.

Medical and Travel Insurance

International students (including groups of students) must have appropriate and current medical and travel insurance while in New Zealand.

Parent Information

As a parent or family member of a Wintec student, we automatically recognise you as a part of Wintec's extended family. You have worked hard to help develop your child for this next phase of life – tertiary education. We've prepared some information especially for you on our website www.wintec.ac.nz/international/student-support/under-18s-parent-information

Refund Policy

By accepting a place in a programme or paying fees at Wintec, a student enters a contract with Wintec for the period of the programme. This means there is an obligation to pay the fee for one year or the length of the programme if less than one year. The refund policy is available on the website: www.wintec.ac.nz/international/student-support/forms-policies. Please note that in the event of low enrolments, a programme may be cancelled and a refund will be given.

Useful Links

- Study in New Zealand:
www.studyinnewzealand.govt.nz
- NZQA's Studying in New Zealand:
www.nzqa.govt.nz/studying-in-new-zealand
- Immigration New Zealand's studying in New Zealand:
www.immigration.govt.nz/migrant/stream/study
- New Zealand Now:
www.newzealandandnow.govt.nz
- Tourism New Zealand:
www.tourismnewzealand.com

Glossary

What does that mean? While you're choosing what and where to study, you will hear a lot of new terms. Here is an explanation of some of them.

Alumni

After you successfully finish your qualification and graduate, you will be considered a Wintec Alumni.

Bachelor's degree

A qualification awarded for study undertaken at a tertiary institute, typically requiring three to four years of full-time study. A Level 7 qualification on the New Zealand Qualifications Framework (NZQF).

Campus

The location where a programme is taught.

Certificate level

Certificates usually take between six months to a year to complete, if studying full-time. Certificates provide a broad introduction to a subject or can provide entry into a higher level of study. They cover a range of levels from 1-6 on the NZQF.

Co-requisite

A module that, if not already passed, credited or exempted, must be taken at the same time as the module for which it is specified.

Diploma level

A qualification usually requiring one or two years of study. Diplomas are often required for entry into advanced trade, technical, and some professional occupations. They cover a range of levels from 5-7 on the NZQF.

Distance study

Students studying by distance study are not required to attend a Wintec campus on a regular basis.

Elective

Some programmes might allow you to undertake elective modules from outside the main programme of study, or even from a different programme altogether.

Enrolment

The formal process, including the payment of fees and other charges if necessary, by which a student is formally registered for a programme and can begin attending classes.

Entry

Acceptance to a specific programme of study at Wintec.

Entry criteria

The minimum English and academic requirements an applicant must meet in order to gain entry into a programme. Entry criteria for programmes will also contain information on processes for exceptions where applicants do not meet the general entry requirements.

Graduate level

Level 7 on the New Zealand Qualification Framework. Graduate level refers to some programmes that are open to students who have completed an undergraduate, Bachelor's qualification.

International student

A student who is not a New Zealand or Australian citizen or permanent resident.

Level

Any of the 10 levels on the New Zealand Qualifications Framework (NZQF), which can range from Level 1 to Level 10.

Module

A single paper that contributes to an entire qualification.

Moodle

Wintec's student portal for course content, timetables, forum discussions, assignments, and results.

Orientation

A programme of activities to introduce new students to Wintec and assist in the transition to tertiary study.

Pathway

A pathway is the term used when talking about the different ways you can enter a certain level of study, or a specific programme.

Placement

A work-related experience at an external organisation where you will apply the skills and knowledge you learn in your programme to practical work.

Pre-requisite

A module that must be passed or credited before you can enrol in the module for which the pre-requisite is specified.

Programme

The qualification/course you are enrolled in e.g. Bachelor of Design.

Postgraduate programmes

Studies normally undertaken after you have completed an undergraduate bachelor's degree or, in some cases, on the basis of relevant post-secondary qualifications and/or work experience.

Qualification

A certificate, diploma or degree awarded following the successful completion of a programme of study.

Semester

Wintec's teaching year is divided into two semesters – Semester 1 from late February/early March and Semester 2, from July. Some programmes are also available in Semester 3 in November.

StudyLink

A section of the Government department Work and Income which manages student loans and allowances for students.

Transfer of credit

Transfer of credit (TOC) is the process of assessing and awarding credit towards a programme based on past formal and informal learning.

Undergraduate

Usually refers to first-time university programmes and bachelor's degrees.



Disclaimer

The information contained in this prospectus is correct at the time of printing (June 2019). Waikato Institute of Technology (Wintec) reserves the right to cancel or postpone any of the programmes and shall not be liable for any claim other than the proportion of programme fees which the cancelled portion bears. Some programmes may be dependent upon formal approval from the New Zealand Qualifications Authority (NZQA), Tertiary Education Commission funding allocation and the number of enrolments. As part of the NZQA targeted review of all Level 1-6 New Zealand qualifications, there may still be changes to some programmes starting in 2020.



What's next?



Apply

If you are working with a Wintec approved recruitment agent, they can prepare your application for you.

If you do not have an agent, you download an application form online www.wintec.ac.nz/international/how-to-apply



Processing

Our enrolment team will process your application. For some programmes we may organise for a staff member to call you to discuss your application.

If you need to provide additional documentation, you can either scan and email it to us at international@wintec.ac.nz or send a copy to our postal address.



Accept

1. We will assess your application and send you an offer by email.
2. We will let you know how to accept your offer.
3. Accept your offer.

TIP: Your offer may be conditional on you passing exams or providing us with some other information – we will keep in touch and let you know what we need from you. Check your emails to make sure you don't miss anything from us.



Prepare

Your first day information will be emailed to you when you accept your offer

You can access your timetable at www.wintec.ac.nz/timetables.

You can apply for your ID card and parking permit online or visit the student enrolment and information centre for assistance.

Contact Us

City Campus

A Block, Gate 3, Tristram Street, Hamilton

Opening hours:

Monday–Thursday 7.30am–5.00pm

Friday 9.30am–5.00pm

Rotokauri Campus

Student Hub, 51 Akoranga Rd, Hamilton

Opening hours:

Monday–Thursday 8.00am–4.00pm

Friday 10.00am–4.00pm

Courier Address

Attn Student Enrolment

Wintec

Main Stores, Gate 4

Tristram Street

Hamilton 3240

New Zealand

✉ international@wintec.ac.nz

🌐 wintec.ac.nz

📘 facebook.com/wintec

📷 instagram.com/wintecnz



Disclaimer

The information in this prospectus describes the courses we intend to offer and is correct at the time of printing (June 2019). Please note that programmes and courses are subject to change.

The most accurate and up-to-date information is available at wintec.ac.nz