

The Language
Gallery












2015

SCHOOL BROCHURE

The world's language school

TABLE OF CONTENTS

	<i>Introduction</i>	5
	<i>Our Teachers</i>	6
	<i>The Academic Journey</i>	8
	<i>Your Free TLG Services</i>	10
	<i>Accommodation</i>	12
	<i>Social Programme</i>	14
	<i>Our Locations</i>	16
	<i>London Campus</i>	18
	<i>Oxford Campus</i>	20
	<i>Birmingham Campus</i>	22
	<i>Manchester Campus</i>	24
	<i>Dublin Campus</i>	26
	<i>Toronto Campus</i>	28
	<i>Build Your Course</i>	30
	<i>General Courses</i>	32
	<i>General English</i>	32
	<i>Business English</i>	33
	<i>Exam Preparation</i>	34
	<i>IELTS Exam Preparation</i>	34
	<i>Cambridge Exam Preparation</i>	35
	<i>TOEFL Exam Preparation</i>	36
	<i>University Programmes</i>	37
	<i>Academic English</i>	37
	<i>University Access Programme</i>	38
	<i>University Pathway Programme</i>	39

	<i>Industry Specific</i>	40
	<i>English for Specific Purposes</i>	40
	<i>Electives</i>	42
	<i>Conversation & Pronunciation</i>	43
	<i>Communication & Critical Thinking</i>	44
	<i>Business Communication</i>	45
	<i>General Writing</i>	46
	<i>IELTS Skills</i>	47
	<i>Courses On Demand</i>	48
	<i>One to One</i>	48
	<i>Groups</i>	49
	<i>Appendix</i>	50



The Language Gallery

INTRODUCTION

Welcome to The Language Gallery!

Whichever of our international locations you choose, you can be sure you will have chosen a school and a team that prioritises your learning.

Our committed and friendly staff are here to make your student journey rewarding, memorable and achievement focused, whether you are looking to improve your language skills for work, study or pleasure. As soon as you join, you will be able to monitor and measure your progress with our TLG Progress Tracker and be supported throughout, with fortnightly performance consultations available.

We pride ourselves on the quality of our team members. The Language Gallery London upholds the EAQUALS charter, which is a commitment to your learning and to quality and integrity. You'll find The Language Gallery staff to be professional and caring with a "can-do" attitude.

Our connections with other schools and colleges provide unique pathways and study opportunities should you continue your studies, and we have an exclusive careers service to support you with your future educational and career options.

The Language Gallery is all about choice, we have over 100 course combinations and great flexibility, and many of our core courses allow you to transfer between courses at no extra charge.

We are looking forward to seeing you at The Language Gallery soon!



A handwritten signature in black ink that reads "Heather Roberts". The script is fluid and cursive.

HEATHER ROBERTS
TLG Academic Director

Our Teachers

Passionate, experienced and well-prepared, the TLG teachers are here to guide and to support you throughout your learning journey.

Trained & Experienced

Our teachers are all CELTA or TESOL trained and many also possess a teaching degree or DELTA qualification.

So, with all this, plus 372 years' of teaching behind them, you can be sure they have the experience to help you achieve your goals.

Supportive

Our teachers help you to achieve specific goals through individual performance consultations and with the help of the TLG Progress Tracker. Whether you are here for 1 week or 1 year, you will gain as much as possible from your time with us.

Well-prepared & Dynamic

We provide a carefully thought-out syllabus, using a combination of communicative methodologies, to fulfil all your learning needs.



"I've been working at The Language Gallery since 2011. We get a varied range of students from all over the world, which means that, as well as learning English, the class also have the opportunity to learn about other cultures."

— Ed Michie, TLG Teacher



"I think the courses we offer here are excellent. We offer a wide range of courses for very different needs and very different levels. All of the courses that we have are focused on the needs of the individual student."

— Ben, TLG Teacher, London



"What I love about The Language Gallery is that there is a great sense of community among the students and the staff. The school offers many great social programmes and so that encourages students to get to know each other."

— Evan, TLG Teacher, Toronto



Meet the teachers via our Youtube Channel:

https://www.youtube.com/channel/UC3TmSTM_qsJF00EV76ZgnNg

THE ACADEMIC

1. Before You Arrive

Take the online test so we know your grammar level.

2. On Your First Day

Our academic team interview EVERY new student to assess your level and put you in the correct class.

5. Join Your Class

6 levels, 17 different types of classes and countless course combinations!

Study 4–6 weeks

BEGINNER A1

Study 10–12 weeks

ELEMENTARY A1+

Exams
IELTS 3.0

Study 10–12 weeks

PRE-INTERMEDIATE A2

Exams
IELTS 4.0

6. TLG Performance Consultations

Our teachers hold two consultations with students every month to discuss your progress and keep you focused on your goals.

7. Step Up When You're Ready!

Refer to the TLG progress tracker and speak to your teachers about your progress.

IC JOURNEY

3. TLG Progress Tracker

You will be given the TLG progress tracker. This will show you what you have studied and what you need to learn to progress to the next level.

4. TLG Online

You will also be given access to TLG Online, a free online platform for extra practice which can be used FOR A YEAR!

Study 10–12 weeks

INTERMEDIATE B1

Exams

IELTS 4.5

Study 10–12 weeks

UPPER-INTERMEDIATE B2

Exams

IELTS 5–6

Cambridge FCE

TOEFL IBT 35–78

Study 10–12 weeks

ADVANCED C1

Exams

IELTS 6.5–7.5

Cambridge CAE

TOEFL IBT 79–109

8. Achieve Your Goals

Our courses prepare you for the next step in your life:

- Progress at work/in your career
- Gain entrance to universities
- Get accepted on post-grad courses

• YOUR FREE T

CAREERS TRAINING & DEVELOPMENT

Our unique relationships with our partner school and colleges mean The Language Gallery can provide additional workshops to sharpen the skills you need to really stand out.

- *Have your CV reviewed before applying for positions.*
- *Join our onsite company visits which can take you right to the heart of many top organisations.*
- *Gain access to JobWire™, the online service which alerts you to the latest vacancies at leading organisations*
- *Get advice from our career professionals on anything from job applications to careers in specific markets.*

GUEST SPEAKERS

These events provide a fantastic opportunity to learn more about what's happening in different sectors of the business world. You'll be able to gain a clear understanding of key industries, sectors and roles. This could include insight into specific professions or emerging career opportunities.

WRITING CLUB

Learn to structure paragraphs, write stories, compose emails and much more. Our writing club is there to help students who aren't confident writers or wish to brush up their writing skills. You could even get the chance to get published in our very own magazine, TLG Times.

TLG SERVICES ♦

CONVERSATION CLUB

Gain the chance to speak to other students who are from other classes and make new friends. There will be a different topic each week giving you a chance to increase your vocabulary and improve your language fluency.

UNIVERSITY ADVISORY SERVICE

This takes place every month in a group session where participants are given general information and guidance on:

- *the studying system in the country*
- *entry requirements and essential documentation*
- *application procedures for programmes*
- *where to obtain the best information about programmes*

TLG ONLINE

Get extra practice with grammar, writing, listening, speaking, pronunciation and much more with TLG Online. We give every student access to this amazing online resource for a whole year! Use this to aid your studies during your course and to continue practising English after you have left us.

EXAM PREPARATION CLUB

Get extra exam practice with our exam preparation club. Here, you look at a different skill each week to perfect techniques that you need for a range of exams.

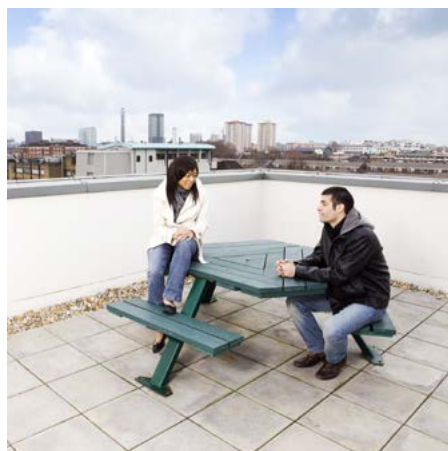
ACCOMMODATION

Here at The Language Gallery we provide a varied range of accommodation options. So, whether you are in Toronto, Dublin or London, we have something to suit everyone.



Halls of Residence

Our halls of residence offer a wide range of rooms and prices to suit your budget. Conveniently located, and home to students from all over the world, living in halls is your chance to live independently with other international students who are sharing the same experience. Enjoy your freedom and love your stay in whichever city you choose to study in.





Homestay

As our schools are located in multi-cultural cities, take the opportunity to stay with families from different backgrounds.



Flat Shares

Share self-catered accommodation with students from around the globe. We'll arrange the ideal flat share, meeting both your budget and location needs.



Studio Apartments

We offer private accommodation for your stay, which is usually centrally located. Studio apartments are available for individuals or couples.




Hostels

One of the best ways to share your experience is by staying in a hostel. Our conveniently located hostels will meet any budget needs.



SOCIAL PROGRAMME



 “TLG’s social programme allows you to make the most of your time abroad while naturally learning the language that you need to order food and drinks, make friends and travel around the world”.

— Fred Mellor, TLG Social Programme organiser



**ACTIVITIES
EVERY WEEK**



**CHECK OUT THE
WEBSITE TO SEE
WHAT WE HAVE
ON OFFER**





London

Why not come along to our bi-monthly walking tours to get to know the city and meet other students from the school?



Oxford

Why not check out Christchurch College, one of the locations where Harry Potter was filmed?



Birmingham

Why not join us for great food and company at our Friday night meals?



Manchester

Why not come along and join other students on our monthly pub crawl? It's a great way to make new friends and practise your English.



Dublin

Why not get out of the city and join us for our bi-monthly walkabout to a nearby seaside village?



Toronto

Why not to come to join our monthly celebrations of Canadian historic events and learn more about culture of your classmates?

CHOOSE YOUR LOCATION

*3 amazing countries,
6 exciting cities to choose from!*



United Kingdom: The UK is culturally diverse and vibrant, with world famous music and arts scenes and a rich history, as well as great travel links to Europe. It remains one of the key English learning destinations. Our UK schools are located in 4 exciting cities: **London, Oxford, Birmingham** and **Manchester**.



Canada: Famous for beautiful scenery and winter sports, Canada is a must see! Go skiing in winter or check out the beautiful lakes in summer - this country is amazing to visit no matter what time of year you go. In Canada, TLG is located in **Toronto**.



Ireland: Meet friendly locals and enjoy a warm welcome in a country that boasts a beautiful countryside and contemporary modern cities. TLG in Ireland is based in the capital, **Dublin**.



Location Course Reference

COURSE	TYPE	CLASSIFICATION	LOCATION(S)
General English	Core	General	All UK, Canada, Ireland
Business English	Core	General	All UK, Canada
Conversation & Pronunciation	Elective	General	All UK, Canada, Ireland
Communication & Critical Thinking	Elective	General	Canada
Business & Professional Communication	Elective	General	All UK
General Writing	Elective	General	All UK
IELTS Exam Preparation	Core	Exam preparation	All UK, Canada, Ireland
IELTS Reading Skills	Elective	Exam preparation	UK (London)
IELTS Speaking/Listening Skills	Elective	Exam preparation	UK (London)
IELTS Writing Skills	Elective	Exam preparation	UK (London)
Cambridge Exam Preparation (FCE/CAE)	Core	Exam preparation	UK (London), Ireland
TOEFL Exam Preparation	Core	Exam preparation	UK (London), Canada
English for Specific Purposes (ESP)	Core	Industry specific	All UK, Canada
Academic English	Core	University programme	UK (London, Oxford)
University Access Programme (UAP)	Core	University programme	UK (London, Oxford)
University Pathway Programme (UPP)	Core	University programme	Canada
One to one, groups, teacher refresher, in-country, corporate		Courses on Demand	All UK, Canada, Ireland



The map shows the proposed bus route in yellow. The route begins at Bloomsbury Way (F & B), proceeds south along Bloomsbury Place, then turns right onto Vernon Place, then right onto High Holborn, then right onto Kingsway, and finally right onto Holborn. Key landmarks include Bloomsbury Square, Theobalds Road, and the Holborn Underground Station. A compass rose is located in the bottom left corner.

Accredited by

Memberships

 **Eaquals**
ACCREDITED
Excellence in Language Education

**BUSINESS
ENGLISH UK**
A special interest group of English UK

ENGLISHUK 
member

Facilities



Student Lounge



Computer Area



Study Area



Dining Room



Wi-fi

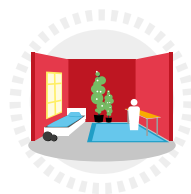
Accommodation



Halls of Residence



Homestay



Flat & House Share

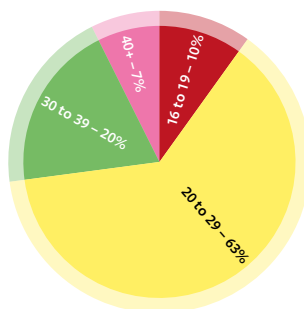


Studio Apartments

Useful facts



Student Age Range



Jan-Jul 2014

Minimum age: 16

Average class size: 12

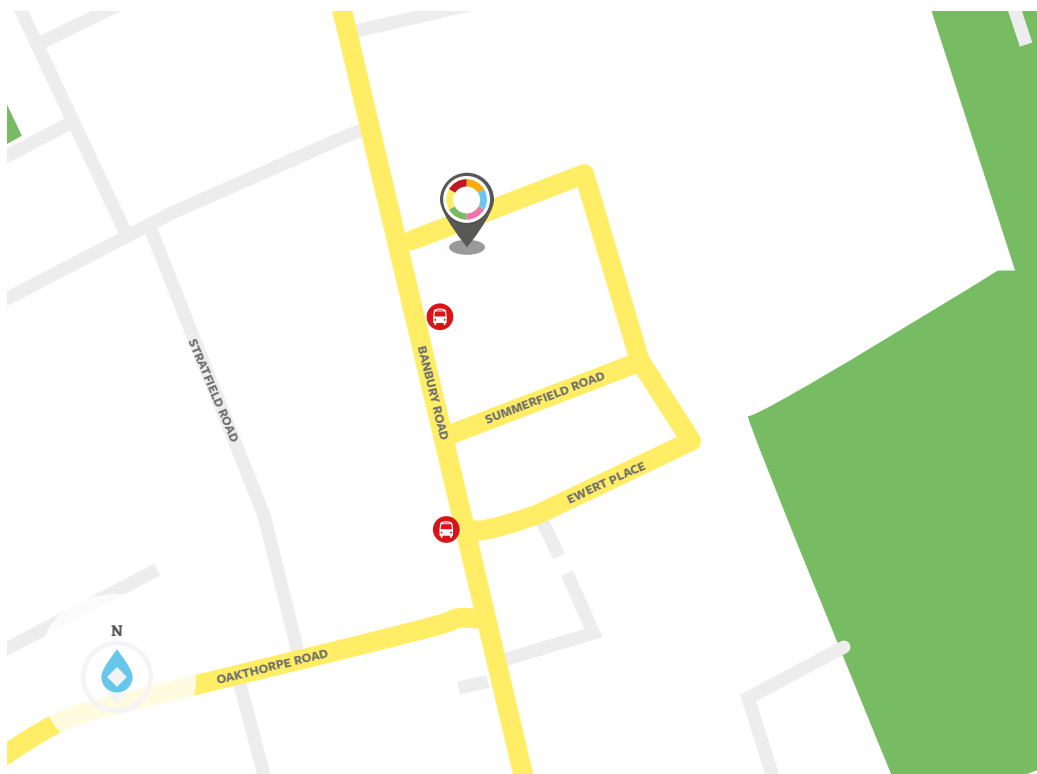
Maximum students
per class: 16

Number of
Classrooms: 22

OUR LOCATIONS



Oxford



Our collaborative partner campus is located close to the centre of this beautiful, old university town. Take a stroll round the city to find out why it is nicknamed 'the city of spires', enjoy first class theatre shows or relax in the stunning university parks after a long day studying.

In Collaboration With



**MAGNA
CARTA
COLLEGE
OXFORD**



Magna Carta College: Official ELPAC Test Centre – English Language Proficiency for Aeronautical Communication. Language courses in Oxford are provided in collaboration with Magna Carta college.

Facilities



Student Lounge



Computer Area

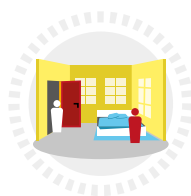


Dining Room



Wi-fi

Accommodation



Homestay

Useful facts



Minimum age: 18

Average class size: 12

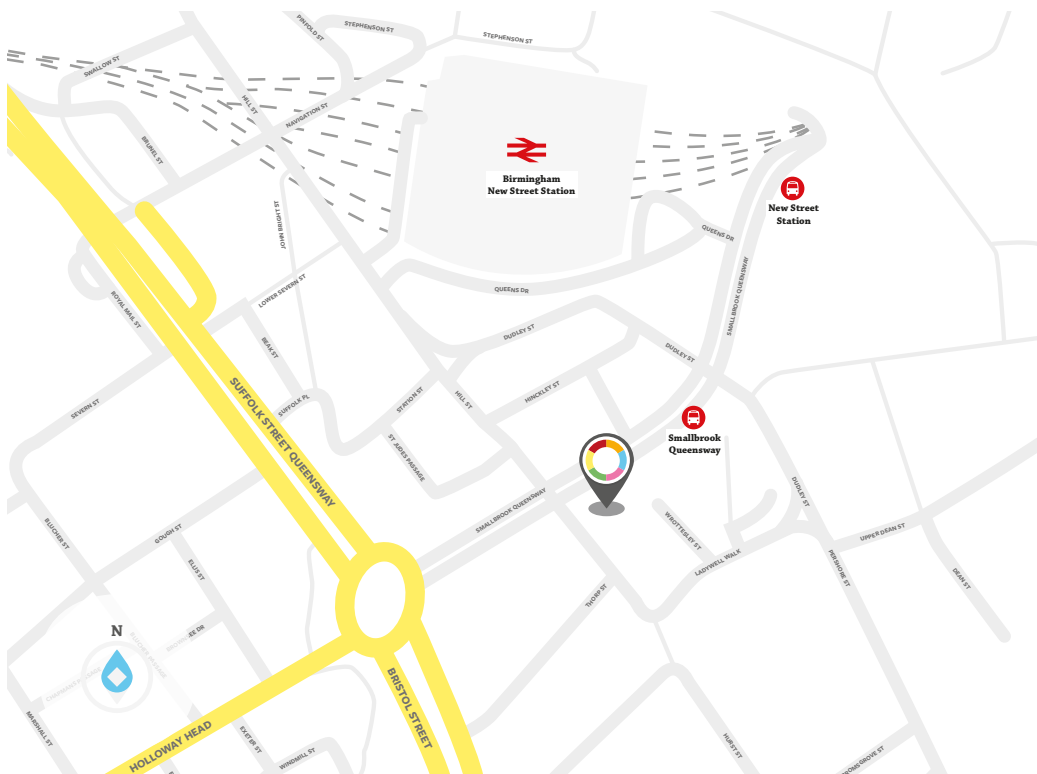
Maximum students per class: 16

Number of Classrooms: 7

OUR LOCATIONS



Birmingham



Our campus in cosmopolitan Birmingham is situated in the heart of this vibrant medieval city. You will study close to the Birmingham Museum, the Bullring shopping centre, Cannon Hill Park and the National Exhibition Centre.

Accredited by



Memberships



Facilities



Student Lounge



Computer Area



Study Area

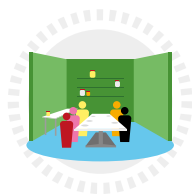


Dining Room

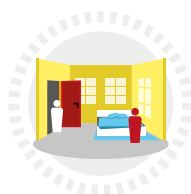


Wi-fi

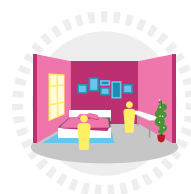
Accommodation



Halls of Residence

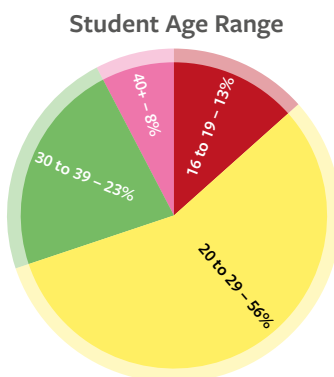


Homestay



Studio Apartments

Useful facts



Jan-Jul 2014

Minimum age: 18

Average class size:
10-12

Maximum students
per class: 16

Number of
Classrooms: 6



A map of the area around St Peters Square Station. The map shows a network of streets, including St Peters Rd, Garsington Rd, Withworth St, and others. A red location pin marks the station, and a blue location pin marks the bus stop. A compass rose indicates North.

Accredited by

Memberships

24

Facilities



Student Lounge



Computer Area



Dining Room



Wi-fi

Accommodation



Halls of Residence

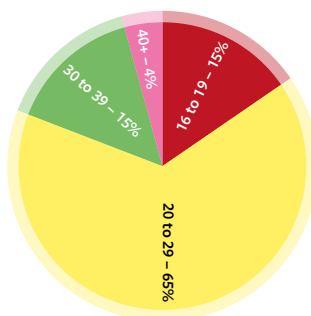


Homestay

Useful facts



Student Age Range



Jan-Jul 2014

Minimum age: 16

Average class size: 12

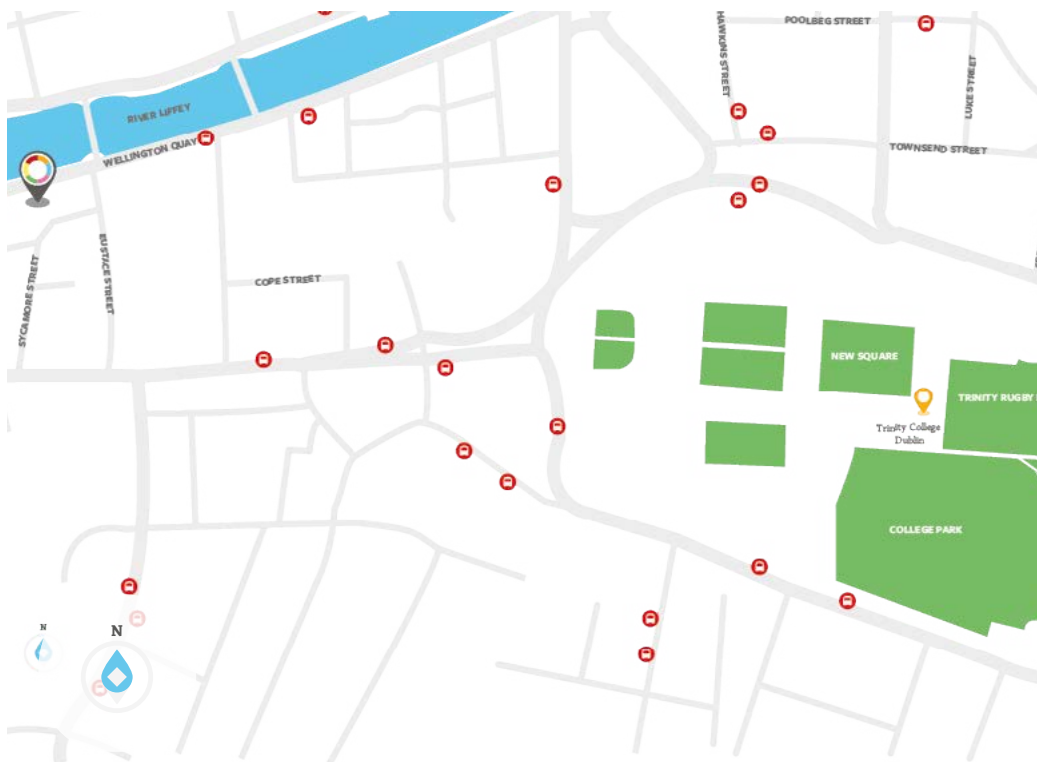
Maximum students
per class: 16

Number of
Classrooms: 6

OUR LOCATIONS



Dublin



Our Dublin location is located in the heart of Dublin City, the capital city of Ireland. Perfectly situated on the Quays in the heart of the bustling Temple Bar, the campus is perfect for our students who wish to study in the city centre. Superior rail, bus and tram links ensure ease of access across Dublin and beyond.

Accredited by



In Partnership With



Language courses in Dublin are provided in partnership with
IBAT College Dublin English School

Facilities



Student Lounge



Computer Area



Student Kitchen



Dining Room



Wi-fi

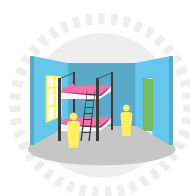
Accommodation



Halls of Residence



Homestay



Hostel

Useful facts



Minimum age: 18 (16 for groups)

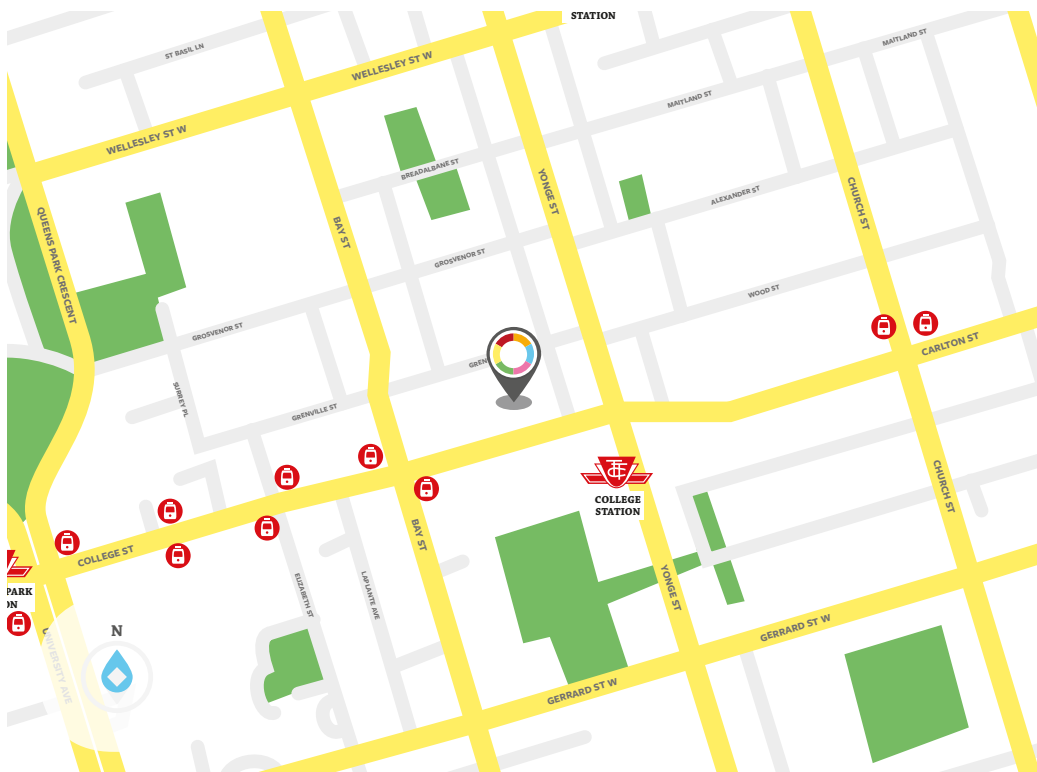
Maximum students per class: 15

Number of Classrooms: 18

OUR LOCATIONS



Toronto



Our Toronto campus is conveniently located in the heart of downtown Toronto, Canada's most vibrant and diverse city. Check out Dundas Square, Eaton Centre and Kensington Market, which are all a short walk from the campus.

Accredited by



Facilities



Student Lounge



Computer Area



Student Kitchen

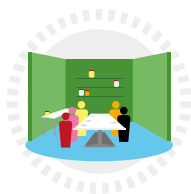


Dining Room



Wi-fi

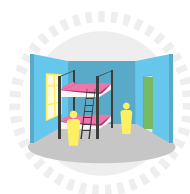
Accommodation



Halls of Residence

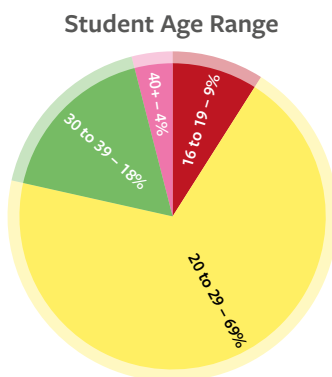


Homestay



Hostel

Useful facts



Jan-Jul 2014

Minimum age: 16

Average class size: 12

**Maximum students
per class:** 16

**Number of
Classrooms:** 11

BUILD YOUR COURSE



Step 1: Choose Your Course Type

	A1		A2		B1	B2	C1
	Beginner	Elementary	Pre-Intermediate		Intermediate	Upper Intermediate	Advanced
General English	♥		♥		♥	♥	♥
Business English					♥	♥	♥
IELTS					♥	♥	♥
ESP						♥	♥
Cambridge						♥	♥
TOEFL					♥	♥	♥
Exam Electives					♥	♥	♥
Elective Courses	♥		♥		♥	♥	♥
Academic English					♥	♥	♥
UAP							♥
UPP					♥	♥	♥

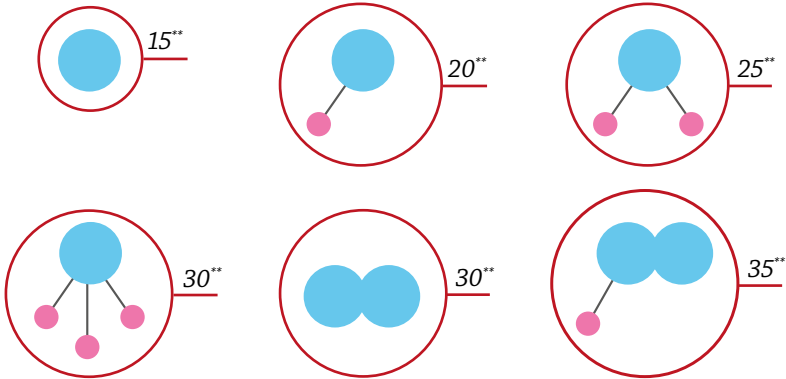
Step 2: Choose Your Intensity

Key

Elective = 5 Lessons*

Core = 15 Lessons*

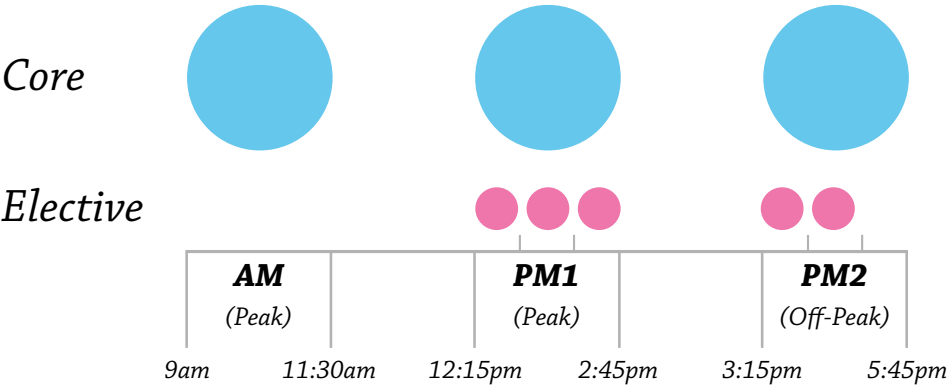
* 1 Lesson = 45 Minutes



** This is the total number of lessons.

Step 3: Choose Your Timetable

Enjoy our flexible timetable
Your core classes can take place in the AM, PM1 or PM2 slots.
Your elective classes can take place in the PM1 or PM2 slots.



GENERAL COURSES

General English



- Develop the 4 key communication skills (Reading, Listening, Writing, Speaking)
- Situations and scenarios for real-world language
- Supportive and interactive learning environment
- A varied and flexible timetable
- All-round English skills for work, study or pleasure

Why not intensify your General English (GE) course with a Conversation & Pronunciation elective or with another core course?



* Core = 15 lessons
** Elective = 5 lessons

FLEXIBLE
TIMETABLE

Key Facts

Start dates

Every Monday

Except public, bank holidays

Entry requirements

A1

Levels

A1–C1

Beginner – Advanced

Duration

Minimum 1 week

Campus

London

Oxford

Birmingham

Manchester

Dublin

Toronto

Business English



UP TO 3
LEVELS

Key Facts

Start dates

Every Monday
Except public, bank holidays

Entry requirements

B1 high

Levels

B1–C1
Intermediate–Advanced

Duration

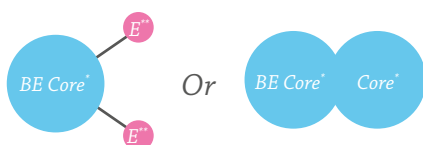
Minimum 1 week

Campus

London
Oxford
Birmingham
Manchester
Toronto

- Develop your English in a professional context
- Enhance your current and future job prospects
- Cover key business topics such as finance, marketing, e-commerce and cross-cultural communication
- Gain practical skills in presentations, negotiations, meetings and other real-world situations
- Gain insights into the modern international business world
- Improve your business knowledge before joining more specialised ESP courses

Why not combine this Business English (BE) course with a Business Communication elective or with another core course?



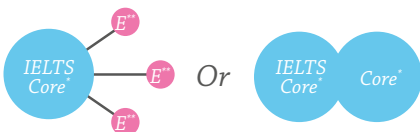
* Core = 15 lessons
** Elective = 5 lessons

IELTS Exam Preparation



- The world's most popular test for Higher Education and migration
- Proven track record of delivering excellent results
- Unique course structure - supplement your course with elective classes focussing on individual skills
- Available at up to three levels (Intermediate, Upper Intermediate, Advanced)
- Regular practice tests to prepare you for the test day

Why not add 1 – 3 electives for further practice? You can also combine this IELTS course with another core course.



* Core = 15 lessons
** Elective = 5 lessons

UP TO 3
LEVELS

Key Facts

Start dates

Every Monday

Except public, bank holidays

Entry requirements

B1

Levels

B1–C1

Intermediate–Advanced

Duration

Minimum 1 week

Campus

London

Oxford

Birmingham

Manchester

Dublin

Toronto

Cambridge Exam Preparation



VALID
FOR LIFE

Key Facts

Start dates

Please refer to website

Entry requirements

B1 high–C1

Intermediate (high) –

Advanced

Levels

B2, C1

Duration

4–6 weeks

Campus

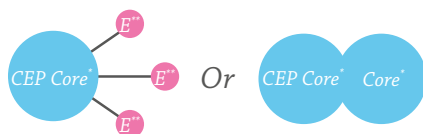
London

Dublin

- Study FCE or CAE
- A qualification at B2/C1 level which is valid for life
- Recognised world-wide as a measure of Professional, Academic and General English
- Language input and exam preparation which covers all the different parts of the test
- Practice tests and strategies to prepare you for exam day
- Gain UCAS Tariff points as well as an internationally recognised English qualification*

* <http://www.cambridgeenglish.org/exams-and-qualifications/ucas-points/>

Why not combine this Cambridge Exam Preparation (CEP) course with 1 – 3 electives or with another core course?



* Core = 15 lessons

** Elective = 5 lessons

TOEFL Exam Preparation



RECOGNISED
IN OVER 130
COUNTRIES

Key Facts

Start Dates

Please refer to website

Entry requirements

B1 high

Duration

London – 4 weeks

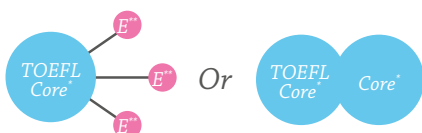
*Toronto – Minimum
1 week*

Campus

*London
Toronto*

- The world's most widely-accepted test for Higher Education
- Focus on key exam skills and strategies
- Improve your Academic English and Academic Skills while preparing for the test
- Take regular practice tests to prepare you for your test day

Why not intensify your TOEFL with another core course or with 1 – 3 electives?



* Core = 15 lessons
** Elective = 5 lessons

UNIVERSITY PROGRAMMES

Academic English



IMPROVE YOUR
ACADEMIC WRITING
& SPEAKING
STYLE

Key Facts

Start dates

Every Monday

Except public, bank holidays

Entry requirements

B1 high

Duration

Minimum 1 week

Campus

London

Oxford

- Ideal preparation for studying in an English-speaking country or English-speaking environment
- Improve your academic writing and speaking styles
- Learn to write clearly and formally
- Improve your sentences, paragraphs and essays
- Practice giving presentations

Why not combine this Academic English (AE) course with 1 or 2 of our electives, or with another core course?



* Core = 15 lessons

** Elective = 5 lessons

University Access Programme



PERFECT FOR
STUDENTS
TAKING AN
MBA OR MA

Key Facts

Start dates

Every Monday

Except public, bank holidays

Entry requirements

C1

Duration

Minimum 1 week

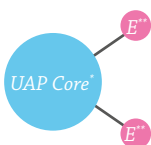
Campus

London

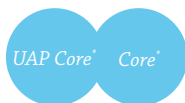
Oxford

- Prepare for independent academic study at an English-speaking University
- For students who already have a place at a university or want to keep their options open, but also wish to prepare for the challenges of studying in an English-speaking country
- Enhance your study, research and critical-thinking skills
- Gain insights into today's undergraduate and postgraduate learning environments
- Work on real-life projects with a business focus e.g. marketing, finance

Why not add another core course or some electives?



Or



* Core = 15 lessons

** Elective = 5 lessons

University Pathway Programme



PREPARE FOR
ACADEMIC LIFE
AT ONE OF
OUR PARTNER
UNIVERSITIES

Key Facts

Start dates

Every Monday

Except public, bank holidays

Entry requirements

IELTS 5.0

B1 high

Duration

Minimum 12 weeks

Campus

Toronto

- Focus on academic skills including essay writing, research methods and critical thinking
- Prepare for academic life in an English-speaking environment, for both undergraduate and postgraduate programs in our partner universities and colleges across Canada
- Some of our pathway partners include Algoma University, Cambrian College, College of the Rockies, Confederation College, Kwantlen Polytechnic University, Lakehead University, Lambton College, Loyalist College and Thompson Rivers University
- Practice listening to lectures and note-taking, reading and summarising
- Learn how to deliver an impactful presentation. Gain an in-depth look at what is expected in today's undergraduate and postgraduate learning environments

Why not combine this with an elective?

UPP Core*

E**

* Core = 25 lessons

** Elective = 5 lessons

English for Specific Purposes



- Learn industry specific English
- Develop your English skills for study or work across specialist industry sectors
- Focus on industry specific vocabulary and language functions
- Choose from 7 different industries: Law, Oil & Gas, Finance, Engineering, Police and Law Enforcement, Automotive, Aviation and ELPAC and Media

Key Facts

Start dates

Please refer to website

Entry requirements

B1 high

Minimum age

18 years

Duration

2 weeks

Hours of study

15 hours per week

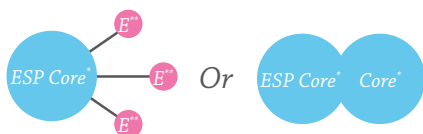
Maximum class size

16 students

Campus

*London
Oxford
Birmingham
Manchester
Toronto*

Why not intensify your ESP course by adding Business English or 1 – 3 electives?



* Core = 15 lessons
** Elective = 5 lessons

Our English for Specific Purposes courses provide the technical vocabulary and concepts for industry-specific subjects:

GAIN INDUSTRY SPECIFIC ENGLISH

London: Finance, Oil & Gas, Law and Engineering • **Oxford:** Oil & Gas, Aviation & ELPAC

Birmingham: Media • **Manchester:** Police & Law Enforcement • **Toronto:** Finance, Oil & Gas, Law



FINANCE

Financial articles & reports, formal letter structures, describing graphs & data, referring to figures & trends and writing reports



AVIATION & ELPAC

Roles & communications, security & safety, emergency situations, technology, aerodromes, weather, investigations, health & medical, human factors



LAW

Company law, employment, trade and property



MEDIA

Journalism, TV, cinema and publishing



ENGINEERING

Technology, procedure, design, caution and monitoring & control



POLICE & LAW ENFORCEMENT

Different types of crime, emergency calls, drugs & alcohol, the justice system, Civil disorder, at the station



OIL & GAS

Technical language, industry trends and project management




ELECTIVES

Why not combine your core class with an elective to intensify your course and build on language you have studied? With our flexible timetable, you can add 1, 2, or even 3 electives to your core class.

We believe we have the perfect combination to any core class with our wide range of electives. Work on conversation fluency, improve your pronunciation, gain confidence with communication, get writing practice, or practice techniques with IELTS skills.

Whatever your needs, we have the elective class to suit you.

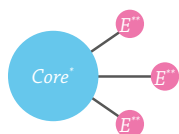


Conversation & Pronunciation



- Increase your fluency and confidence
- Expand and consolidate your vocabulary
- Work on common pronunciation problems
- We also offer a free conversation club to further increase your practice time and confidence

Why not add this elective course to your General English class?



* Core = 15 lessons
** Elective = 5 lessons

A GREAT
SUPPLEMENT
TO ANY
CORE CLASS

Key Facts

Start Dates

Every Monday
Except public, bank holidays

Entry requirements

A1

Levels

A1–C1
Beginner – Advanced

Duration

Minimum 1 week

Campus

London
Oxford
Birmingham
Manchester
Dublin
Toronto

Communication & Critical Thinking



- Focus on the development of natural communication skills
- Practise creative writing, debating techniques and presentation skills
- Develop your critical thinking skills

FREE
CONVERSATION
CLUB

Key Facts

Start Dates

Every Monday

Except public, bank holidays

Entry requirements

A1

Levels

A1–C1

Elementary–Advanced

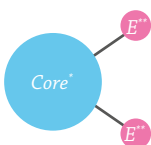
Duration

Minimum 1 week

Campus

Toronto

Why not add this elective course to your General English class?



* Core = 15 lessons

** Elective = 5 lessons

Business & Professional Communication



.....
**PERFECT WITH
BUSINESS ENGLISH**
.....

Key Facts

Start dates

*Every Monday
Except public, bank holidays*

Entry requirements

*B1
Intermediate*

Duration

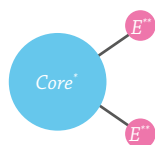
Minimum 1 week

Campus

*London
Oxford
Birmingham
Manchester*

- Gain confidence communicating and writing in English in a Business context
- Focus on aspects of cross-cultural communication and pronunciation
- Complement your Business English class

Why not add this elective course to your Business English class?



* Core = 15 lessons
** Elective = 5 lessons

General Writing



- For students who want to get more practice with writing for general purposes
- Write letters, articles, stories and more
- Improve your coherence and cohesion.
- Get your work published in our school magazine

WRITE
ARTICLES
FOR TLG
TIMES

Key Facts

Start Dates

Every Monday

Except public, bank holidays

Entry requirements

B1

Intermediate

Duration

Minimum 1 week

Campus

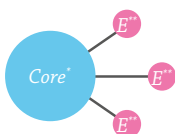
London

Oxford

Birmingham

Manchester

Why not add this elective course to your General English class?



* Core = 15 lessons

** Elective = 5 lessons

IELTS Skills



3 ELECTIVES
3 SKILLS

Key Facts

Start dates

Every Monday
Except public, bank holidays

Entry requirements

B1
Intermediate

Duration

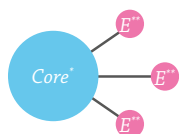
Minimum 1 week

Campus

London

- For students who are already taking IELTS and wish to gain extra practice on whichever skill(s) the student finds most difficult
- 3 separate electives for specific skills: Reading, Speaking & Listening, Writing
- Choose to work on the skill you feel least confident with
- Perfect supplement to the core IELTS class

Why not add this elective course to your core IELTS preparation course?



* Core = 15 lessons
** Elective = 5 lessons

One to One



These classes focus 100% on your specific needs. We can spot any areas you need to strengthen and work with you to meet your individual goals.

Take it as a stand-alone class or combine it with a core English class. Either way, we can find the best possible combination to suit you.

Key Facts

Start dates

Every Monday

Except public, bank holidays

Duration

No maximum or minimum number of hours

Course Structure

Content decided by the student and teacher

Hours of study

Flexible timetable to suit any requirements

Campus

London

Oxford

Birmingham

Manchester

Dublin

Toronto

Groups



The Language Gallery can create bespoke packages tailored to meet your needs. Choose your course content, the number of hours you want, and the accommodation you want.

We accept all groups, from university students to qualified English teachers who want to up skill.

We often run courses in:

- Medical English
- Aviation
- Teacher Training
- Media
- HR
- Trinity Exam Preparation*
- Executive English
- In-country Tuition
- & much more!

You can specify travel arrangements, add meals depending on your dietary requirements and decide whether you wish to study in a mixed (multilingual) or closed (monolingual) group.

* UK only.



Pre arrival information

Useful websites

Here are some useful websites that can help you prepare before your trip.

Compare the cost of living between your city and the one you're visiting- <http://www.numbeo.com/cost-of-living/comparison.jsp>

Currency conversion - <http://www.xe.com/currencyconverter/>

Check out Time Out to see what's happening in the city you're visiting - <http://www.timeout.com/>

Different types of VISAs

UK – <https://www.gov.uk/browse/visas-immigration/study-visas>

Ireland – <http://www.educationinireland.com/en/how-do-i-apply-/get-your-student-visa/>

Canada – <http://www.cic.gc.ca/english/information/applications/>

Insurance

It is very important that you take out insurance before entering any foreign country. Anything can happen while you are away and having insurance gives you and your loved ones piece of mind.

Don't forget!

Take the online test – this will help us place you in the correct class on your first day of school.

Book your airport transfer – avoid the stressful journey from the airport to your accommodation in a new city. Book an easy, stress-free transfer to start your experience off the right way.

Check out our website thelanguagegallery.com - see what's happening with the social programme to get an idea of what you would like to take part in.



How to enrol with TLG

There are three different ways to enrol with us:

- Enrol directly through our website. TheLanguageGallery.com
- Complete an enrolment form and email it to us.
- Contact your nearest Language Gallery representative.

If you need anything answered which isn't in this brochure, please contact our International Admissions Team.

See back page for contact details.



Paying

If you're enrolling through a local representative, please make payment to them. If enrolling directly, please pay by direct bank transfer or credit card to The Language Gallery. All bookings are subject to our Terms and Conditions. You'll find details on the enrolment form and on www.TheLanguageGallery.com.



Confirming enrolment

We will confirm your enrolment by email, to you or your local representative.



TLG Pre-Arrival Student Support

Before your start date you will receive The Language Gallery Student Handbook, which will give you all the information about the school that you need and also provide you with a telephone number to contact us in an emergency, 24 hours a day.

Please see the website www.TheLanguageGallery.com for our terms and conditions.



The Language Gallery

.....

Email UK & Ireland: English@TheLanguageGallery.com

Phone UK & Ireland: +44 (0) 20 3435 4569

Email Canada: Toronto@TheLanguageGallery.com

Phone Canada: +1 416 800 2204

.....

London Campus

18 Southampton Place, London, WC1A 2AJ, UK

.....

Oxford Campus

Milford House, 1A Mayfield Road, Summertown, Oxford, OX2 7EL, UK

.....

Birmingham Campus

SBQ1 4th Floor, 29 Smallbrook Queensway, Birmingham, B5 4HE, UK

.....

Manchester Campus

3rd Floor, Churchgate House, 56 Oxford St, Manchester, M1 6EU, UK

.....

Dublin Campus

IBAT College Dublin, 16–19 Wellington Quay, Temple Bar, Dublin 2, Ireland

.....

Toronto Campus

22 College Street – Suite 500, Toronto, M5G 1K2, Canada

.....

©2014 The Language Gallery. All rights reserved. Terms and conditions apply. E&OE

The Language Gallery School Brochure 2nd Edition – 26th September 2014.

Information given in this brochure is correct at the time of publication and is subject to alteration.