

Boost your French at work!





*Do you want to improve your French?  
Do you want to live for a while in France?  
Your dream is to live a life « à la française »?*

## **Learn French while working!**

- 1** Progress in French at school and at work
- 2** Experience the French “art de vivre”
- 3** Enjoy a paid job in the hospitality industry



## With France Langue - Work Experience, you benefit from

### A full French programme



French classes  
in the heart of Paris



A program that fits your level and  
prepares you for the professional life

### A safe work experience supervised



A work experience well-guided



A serious employer, carefully  
selected



A job contract and salary in  
accordance with the French law

### A secure stay



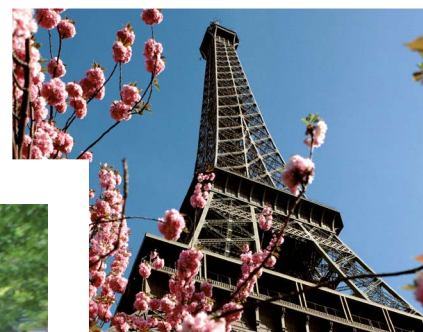
Permanent support by our team  
for a peaceful stay



Valentin, 20 years old, Swiss

salesman in a souvenir shop

« With this program we have the opportunity to  
experience the culture and life of real French people.  
I enjoyed this trip while learning the language and  
discovering the culture. »



Carol, 22 years old, Irish

waitress in a bar

« I have many new friends, French  
and international; and know Paris  
better. Now I am more confident when  
I speak French. »





## You meet the following conditions:

- ✓ Are you between 18 and 30 years old?
- ✓ Are you at an intermediate level in French (B1 minimum)?
- ✓ Are you European or able to provide a working holiday visa?
- ✓ Are you able to cover financially the first two months of your stay?
- ✓ Are you able to provide an International insurance?
- ✓ Are you available for at least 3 months?



**Don't wait any longer to live  
your own experience in France!**

# Improve your French on a daily basis, at France Langue and at work

## French course tailored to your level

**Aim:** Offer the opportunity to improve your French skills in a professional environment

**Duration:** 2 or 4 weeks according to your level

**Location:** France Langue Paris Opéra

## A paid job in the hospitality industry (hotels, restaurants, stores...)

**Aim:** Live a professional experience in the customer service field: hospitality, sale, catering

**Duration:** From 3 to 12 months (French work contract)

**Wage:** Minimum wage in France

**Location:** Paris / Ile-de-France

## Service +

### Before your arrival

- Help and information
- Skype interview upon receipt of your application form (assessment of your level of French, your motivation, your expectations and needs; presentation of the programme)

### On your arrival in France

- Welcome reception at our school: presentation of the leisure activities organized by the school, handing out of the student card that entitles you to many discounts
- Orientation: Hand book, useful tips and administrative procedures (bank account, work permit if necessary...)
- Interviews with host companies
- Support to hiring

Programmes	French course	Paid Job	Price
			Paris Opéra
LEVEL B1*	INTENSIVE COURSE - (2 weeks) + STANDARD COURSE - (2 weeks)	from 3 to 12 months	2070€
LEVEL B2*	INTENSIVE COURSE - (2 weeks)		1550€

\* 2 packages according to your level

+ registration fee= €80





## **Ready to start?**

### **Minimum 2 months to prepare your application form:**

#### **Reception of your application form by our team France Langue**

- France Langue's online level test
- Application form (resume and cover letter in French)

#### **Validation of your application form by our team Work Experience**

- Skype interview to define and assess your project
- Confirmation of your participation to our French & Paid Job programme



### **Think about it!**

#### **A complete application form includes:**

- A resume in French (Word format)
- A cover letter in French (Word format)
- The results of your French level test
- A copy of your passport





## Preliminary interview

We will contact you for a Skype interview in French after reviewing your application form. The objective is to explain the programme, check your information about your registration, your motivation and your level of French. Your ability to communicate in French, your good motivation and your reliability are mandatory to join the French & Paid Job programme. During the interview, please make sure to inform us of any condition that prevent you from working in certain industries (allergies...).

### Approval of your application form

We will send you a letter of acceptance to the program within 5 working days. You must return the document signed and dated to confirm your enrollment. The person in charge of your placement is your personal contact. In case your application is denied, you will be notified within 5 working days and your complete application form will be returned to you. Administration costs are not refundable (175 €).



Enjoy a  
tailor-made  
support





# Once in France, let us guide you safely

STEPS OF YOUR PROGRAMME		
<b>Intensive course - 2 weeks</b> <i>A general French course combined with specialized modules to progress quickly in a professional environment (speaking, writing, phonetics, oral comprehension...).</i> <ul style="list-style-type: none"> <li>Standard course: 20 lessons (15 hours per week) + Specialized modules: 6 lessons (4 hours 30 per week)</li> <li>4 lessons of linguistic reinforcement</li> <li>2 lessons of professional French (coaching to prepare for the interview, customer relationship, professional interactions...)</li> </ul> Modules are tailored to the level, needs and objectives of the participants.	<b>Standard course - 2 weeks</b> <i>A programme that develops all your skills and allows you to master the fundamentals in general French.</i> <ul style="list-style-type: none"> <li>20 lessons (15 hours per week)</li> <li>Continuation of the content covered during the first 2 weeks of the programs</li> <li>This programme is mandatory for students that are at a B1 level in French and up. It aims at improving your knowledge of French</li> </ul> Afternoons free to arrange the interviews with the employers.	<b>Paid Job - 3 to 12 months</b>  <div> <b>Job interviews</b> and signature of your work contract           </div> <div>             Start of <b>Job</b> </div>
<b>Coaching and training</b> <ul style="list-style-type: none"> <li>Coaching for the interview</li> <li>Orientation session each Wednesday</li> </ul>	<b>Meeting with companies</b> <ul style="list-style-type: none"> <li>Submission of your application to the employers</li> <li>Job interviews during free time when you are not in class</li> </ul>	<b>Availability of our team</b> according to your needs

**Start dates**  
 Possible start date at the beginning of each month  
 2015/01/05, 02/02, 03/02, 04/07, 05/04, 06/01, 07/06, 08/03, 09/07, 10/05, 11/02, 11/30

**School location**  
 France Langue Paris Opéra

**Number of participants**  
 General French lessons and linguistic reinforcement modules (4 lessons per week - 3 hours per week) - 8-9 participants  
 Professional French modules (2 lessons per week - 1 hour 30min. per week) - 3-5 participants





## Job interviews

We offer a paid job to all the participants during the first month of their stay in France.

Job interviews take place during the first 4 weeks in Paris. The first interview can be scheduled during the first week.

Be reactive. Preparing and attending the interviews is mandatory.

You must be reachable at all times throughout the recruitment process in order to inform you about your next interview.

You should also contact us immediately after each interview.

We have implemented a flexible schedule, allowing you to meet the employers when you are not in class. It may be that the interview takes place during the course; in that case, you must inform the school and your teacher. This case must remain exceptional.

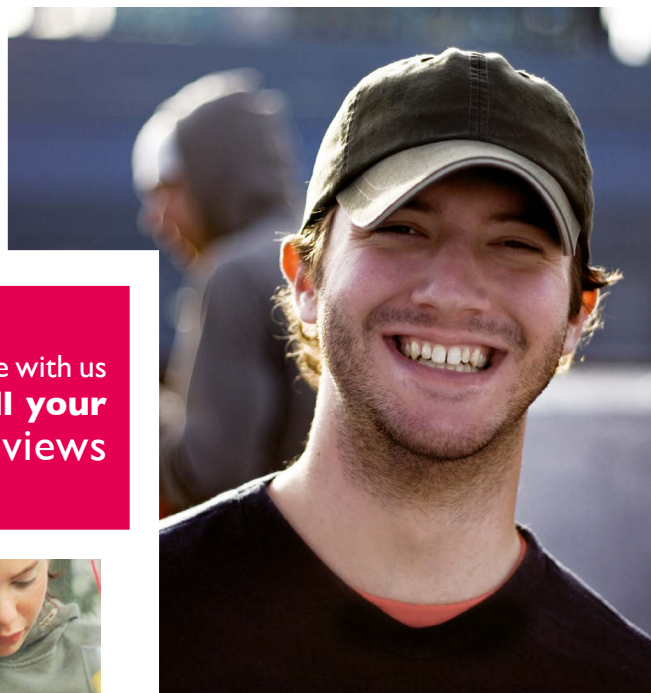
FRANCE LANGUE allows you not to attend a course but won't reimburse you for the classes missed. If at the end of the interview, the employer does not accept your application, we will offer you a new interview. We can offer up to 3 interviews, in case of denial, no refund will be made.

It is essential to wear business attire during your job interviews.

**Attention :** a maximum of 3 interviews will be set up for each student.



Prepare with us  
**for all your  
interviews**





## Work in France

The opportunities of jobs are in the fields of hospitality, retail store, and sale. The duration of work contract depends on the needs of the employers but we take care of your preferences.

The job can be either part-time or full-time according to the sector, habits of the employers and your preferences.

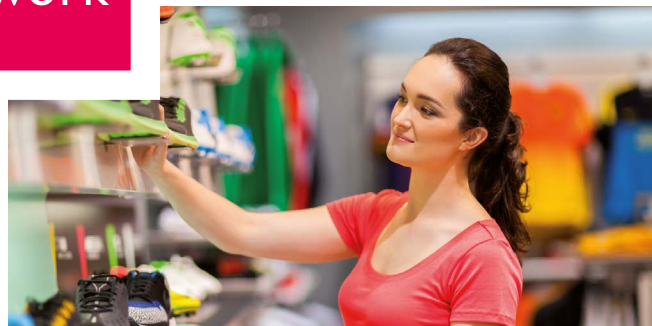
Your level of French, your background and your behaviour will determine the position, tasks and responsibilities that will be given to you in the company. All kind of professional experience will enrich your CV for the host company.

We disclaim all responsibility for internal issues that might arise with management or employees in the company.

The French & Paid Job programme is a linguistic, cultural and human experience. You will learn French at school and in a professional environment different from your country. You will work in France and discover the workplace «à la française». To take full advantage of the job, you must adapt and show motivation, curiosity and dynamism. In order to guarantee an enjoyable atmosphere, it is important to communicate spontaneously with your supervisor and team.



**Benefit**  
from our professional  
network







## Your arrival at France Langue

In order to best organize your arrival, you must inform us of your trip details (departure and arrival) as early as possible, at least 15 days prior to your arrival in France.

You will arrive in Paris, where you may use our accommodation and airport transfer services.

The Monday after your arrival, you will start your French programme, which will last 2 or 4 weeks. An orientation meeting is set up to help you with the administrative procedures and prepare for your interviews.

The course is arranged for you to meet employers outside of your course hours. The job will usually start once the French course is over.

### ACCOMMODATION

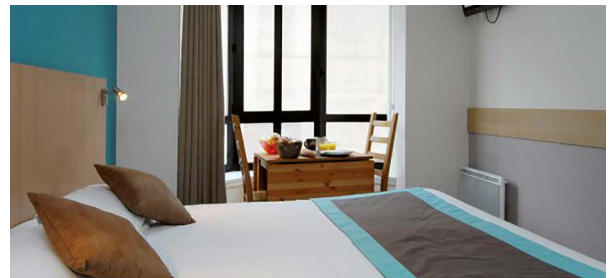
You may use the housing offers listed in our directory in order to facilitate your integration into the country during your stay.

Examples of housing offers:

- Host families (no meals, B&B, half board)
- Student residence including breakfast (diner possible on request)

### GREETING AND AIRPORT TRANSFER

On request, a driver welcomes you at the airport or train station, and drives you to your place of residence in Paris.





## Practical information

### Insurance

In order to come to France, you must first subscribe to an insurance that will be valid for the entire duration of your stay. The European Health Insurance Card gives European citizens access to medical care everywhere in Europe. Please make sure to get all the information before you leave your country.

Nevertheless, we advise you to subscribe to an International insurance plan, as it provides better coverage, especially to people that work abroad or join a work & holiday program.

Contact France Langue for more information.

### Average wage

You can either work full-time (35 hours per week or 39 hours in the catering field) or part-time. No matter the position, you will receive a salary in line with the minimum wage in France.

In 2014, the minimum wage in France was:

- Gross monthly minimum wage (based on 35 hours): 1445.38 €
- Net monthly minimum wage (indicative): 1133 €

### Additional expenses

- Plane or train ticket
- Accommodation
- On-site transportation
- Food
- Insurance
- Personal expenses

It is recommended to arrive in France with a minimum of 1500 € to cover your personal expenses.





# Rule of procedure

1. The proposed Programme is open to European Union citizens, to waiver Visa and Working holiday visa.
2. Participants can start the Programme at fixed dates, every first Monday of the month, for a maximum duration of 12 months.
3. Each participant shall agree to read and abide by all rules and guidelines of the Programme, as defined by France Langue and by the organisations in collaboration with France Langue.
4. The French & Paid Job programme offers a job in the fields of service, hospitality and tourism industry.
5. France Langue cannot guarantee that an application will be processed in less than 2 months. Travel arrangements, purchase of a plane ticket, or any commitment made by the participant shall in no way result in priority processing of his/her application, nor obligate us to provide any service.
6. Participants shall have access to services offered as part of the Work Experience in France for the duration of the job. Beyond this period, the participant will continue to work on the French territory but he / she will no longer be the responsibility of France Langue and no longer receive the benefits of the program.
7. Implementation of the Programme involves various organisations which shall, in any event, maintain their respective responsibilities as stipulated in bylaws governing their activities, national laws or international conventions which may establish limits of liabilities, among other provisions.
8. All participants are responsible for reading and fully understanding all of the information provided by France Langue and its partners regarding judicial, legal, social, political, health, work, and other matters in France. Moreover, all participants shall agree to respect French culture and customs and to abide by French law, and shall be held fully accountable in case of violation.
9. The information in the application is correct as of the day it was published. It is subject to change without notice.
10. The prices of the Programme are purely indicative, non-contractual, and may be subject to change. Only the prices indicated upon final registration, thus appearing on the invoice/registration confirmation given to participants upon registration shall be firm and definitive. These definitive prices shall serve as reference for any matter concerning the modification or cancellation of the Programme.
11. All participants are responsible for providing true and accurate information to France Langue. All participants must be fully aware that any false statement on their part may lead to the cancellation of their Programme, without any right to a refund or compensation.
12. All participants confirm that they meet all of the requirements, including but not limited to age, nationality and status, for participation in the French & Paid Job Programme. France Langue and its partners reserve the right to refuse any Programme application from participants who do not meet the eligibility criteria.
13. Upon registration, all participants are required to inform France Langue of any physical and/or psychological condition, medical treatment or health problem susceptible to interfere with their participation in the Programme or with a successful experience.
14. Upon registering for the Programme, all participants must be able to prove that they possess the necessary financial means for a successful stay in France. Participants attest that they shall have access to at least €1,500 upon their arrival in France.
15. France Langue guarantees neither the place nor the type or duration of the job. The final offer of employment is subject to the will of the employer and the participant can't refuse a job offer.
16. All participants understand that a maximum of 3 interviews opportunities will be offered to them. France Langue assumes no responsibility in the event that a participant is not able to find a job after 3 interviews.
17. Each participant is required to comply with the rules of the company. The participant is required to work for the entire period for which he / she was recruited (e) and can in no way break the work contract or shorten it. Similarly, France Langue and its partners cannot be held responsible for the conduct or attitude of host companies and not recommend any.
18. The non-European participants, regardless of whether they are in possession of a French visa will receive by the French government a temporary work permit needed to work legally on French territory.
19. Within 5 days of hiring, the participant is required to send the request of temporary work permit to the DIRECCTE, and for each new job. It is up to the employer to declare the participant to the French social security system at the time of hiring.
20. The temporary work permit is issued by the competent French authorities who reserve the right to refuse the assignment. France Langue cannot intercede on behalf of the participant.
21. All participants understand that they must have insurance covering medical expenses, hospitalisation, and repatriation, for the duration of their stay in France.
21. During registration for the Programme, participants have the opportunity to either provide France Langue with a proof of insurance showing the type of coverage provided, or adhere to the insurance offered by France Langue.



Our France Langue Paris Opéra school is located in a lively neighbourhood, between the department stores along Boulevard Haussmann and the fabulous jewellers of Place Vendôme. There are also many bars and restaurants waiting for you!

Our school offers courses and specialised modules that will allow you to communicate efficiently in your business specialty and in concrete work situations.

## FL Paris Opéra

**L'Espace affaires :** an elegant school in a calm setting in the heart of a lively area, especially popular for professionals and fashion lovers.

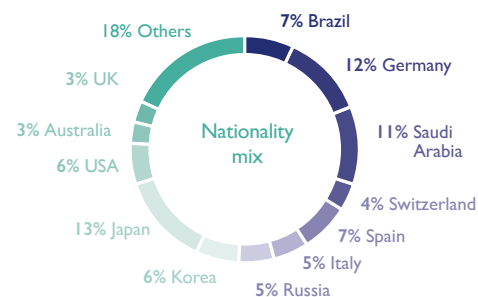
The school itself is in a typically Parisian building on the Boulevard des Italiens, away from the bustle of the street. Céline and her team are on hand to welcome you in this pleasant and professional environment. With several bus stops and metro stations close by, access to the school is very simple wherever you are staying in Paris. The metro entrance opposite Opéra Garnier is truly unique...

Céline



🚶 | 5 km / 15 min

✈️ | 30 km / 40 min (CDG)

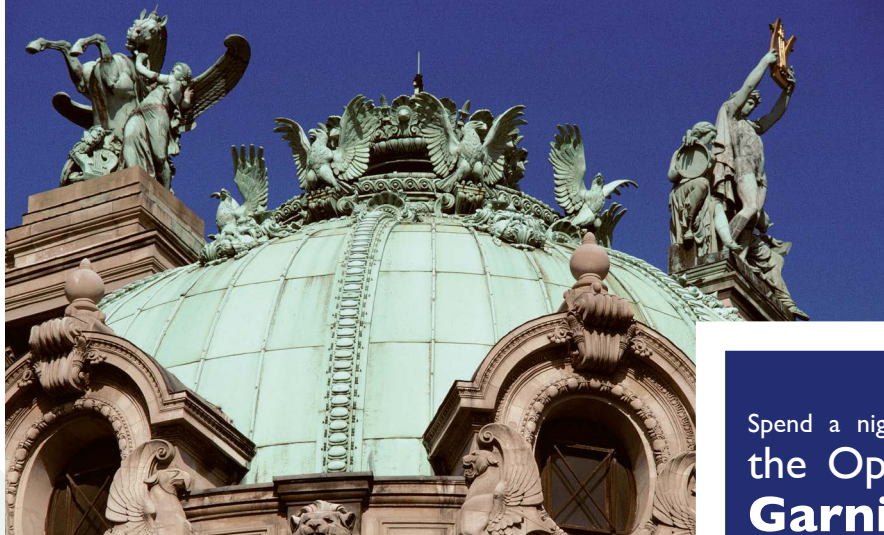


### Advantages

- Small class size: 9 students maximum
- Spacious, elegant & pleasant premises
- Lively neighbourhood, a few steps away from the Opera, the Louvre Museum and the famous department stores
- In the heart of Paris, less than 30 minutes away by public transportation from all the touristic sites
- Direct access by bus to Charles de Gaulle airport
- Many shops and restaurants in the area



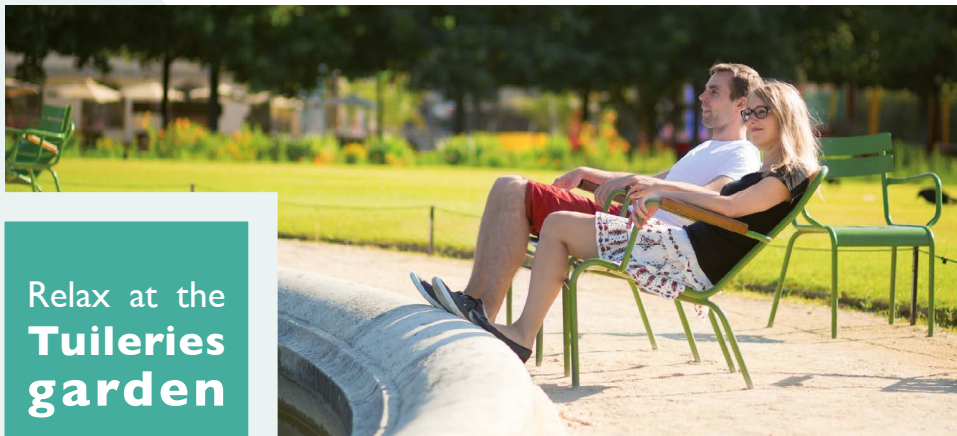




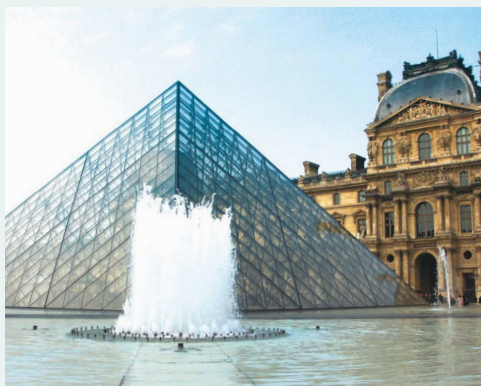
Spend a night at  
the **Opera  
Garnier**



**Shop**  
in the department stores on  
**boulevard  
Haussmann**

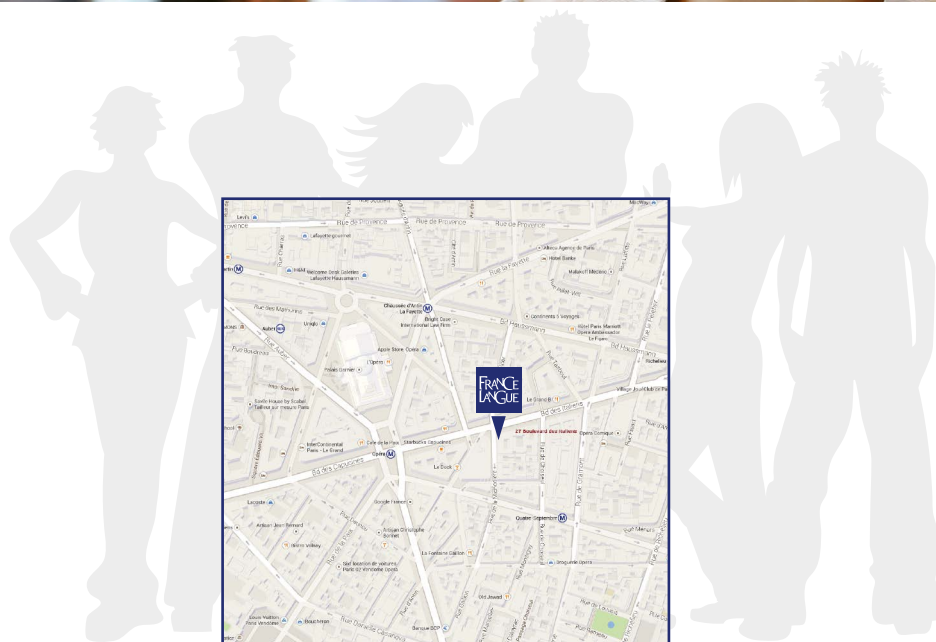


Relax at the  
**Tuileries  
garden**



Admire the know-how of  
the jewellers of  
**Place Vendôme**





### **France Langue Paris Opéra**

27 boulevard des Italiens  
75002 Paris

Tél. : +33 | 42 66 18 08

Fax : + 33 | 42 66 14 56

Métro : Opéra (Lignes 3, 7 et 8),  
Chaussée d'Antin La Fayette  
(Lignes 7 et 9),  
Richelieu Drouot (Ligne 9),  
Quatre Septembre (Ligne 3)

RER A : Auber

■ PARIS

■ NICE

■ BORDEAUX

■ BIARRITZ

■ MARTINIQUE

France Langue - siège social : 40 boulevard de la République - 78 000 VERSAILLES  
SARL au capital de 15 000 euros - RCS Versailles 391 576 592 - N° TVA intracommunautaire : FR 36 391 576 592

**Private institution of higher education - [www.france-langue.fr](http://www.france-langue.fr)**