

2016



Learn English in Ireland  
*where learning is a pleasure*

[www.slaneylanguage.com](http://www.slaneylanguage.com)  
[www.wexford-language.com](http://www.wexford-language.com)



[www.facebook.com/slaneylanguagecentre](http://www.facebook.com/slaneylanguagecentre)  
[www.twitter.com/SlaneyLanguage](http://www.twitter.com/SlaneyLanguage)  
[www.youtube.com/SlaneyLanguage](http://www.youtube.com/SlaneyLanguage)



# Contents

Welcome .....	3
Why Ireland? .....	4
Why Wexford? .....	4
Why the Slaney Language Centre? .....	5
Course Information .....	6
<b>Tailor-made courses for groups</b> .....	6
<b>SLC Specialised Courses</b> .....	7
Our core team .....	8
Your first day with us .....	8
How to get here .....	9
Student comments .....	10
Repeat students .....	11
Courses .....	12
<b>General English Group Course Intensive</b> .....	12
<b>General English Group Course Intensive Plus 4</b> .....	12
<b>General English Group Course Intensive Plus 10</b> .....	13
<b>Acedemic Year Programme</b> .....	13
<b>One-to-One Course and Two-to-One Course</b> .....	14
<b>Business English for Executives Full Immersion Course</b> .....	14
<b>Family Courses</b> General English, Keen Teens, Cool Kids .....	15
<b>Irish Culture Course</b> Tailored towards more mature students .....	16
<b>Study English during the Festival</b> in October .....	16
<b>Learn English and Play Golf in Ireland</b> at Easter .....	17
<b>Language Course and WWOOFing</b> .....	18
<b>English and Internship Programme</b> .....	18
<b>English Evening Courses</b> TIE exam preparation - NEW .....	18
Accommodation .....	19
Useful Websites .....	20
Other Details .....	20
<b>School Holidays for 2016</b>	
<b>Payment Options</b>	
Terms and Conditions .....	21
Prices at a Glance .....	22
Insurance .....	22

## Courses throughout the year

(from 15/2/16 to 16/12/16)

General English Group Course **Intensive**. See page 12

General English Group Course **Intensive Plus 4**. See page 12

General English Group Course **Intensive Plus 10**. See page 13

**Acedemic Year Programme**

See page 13

**One-to-one** Courses. See page 14

**Two-to-one** Courses. See page 14

**Full Immersion Business** Courses for Executives. See page 14

## Our Classics

**Family Courses at Easter, in July and August** See page 15

**Irish Culture Course in September** See page 16

**Learn English during the Festival** See page 16

## New in 2016

**TIE exam:** Slaney Language Centre students can now **prepare for the TIE exam** (Test of interactive English) and take the exam at the end of their course. For more info on the TIE exam please check page 6.

**English Evening Classes** now include TIE exam preparation. Courses take place on Wednesday nights from 19.00 to 21.00.

## Again in 2016

**Free Coffee Club Conversation** with your teacher in February, November and December. See page 5

Please contact us for more information at [info@slaneylanguage.com](mailto:info@slaneylanguage.com)





*where learning is a pleasure*

Welcome to Ireland and to the Slaney Language Centre!

At the Slaney Language Centre you will experience...

- a relaxed, friendly and encouraging learning environment
- low class sizes (max. 8 from September to June, max. 10 in July and August, max. 12 Keen Teens & Cool Kids Courses)
- qualified, experienced and dedicated teachers
- caring and welcoming host families

Here at the Slaney Language Centre you will...

- enjoy communicating in English
- make rapid progress in small classes
- meet people from all over the world
- socialize with young and old as is the tradition in Ireland
- receive personal attention and support from teachers and office staff

You will enjoy meeting people from all over the world

In recent years we have had students from:

Germany	Spain	Argentina
Portugal	Italy	Brazil
France	Switzerland	Peru
Austria	Luxembourg	Cuba
Poland	Latvia	Mozambique
Belgium	Hungary	Guinea
Finland	Lithuania	Cuba
Slovakia	Holland	Czech Republic
Sweden	Romania	Liechtenstein
Greece	Japan	South Korea
Colombia	Ukraine	Russia
Syria	Saudi Arabia	Mexico
China	Taiwan	Thailand
Morocco	Mauritius	Slovenia
Sudan	Venezuela	



During our popular **international lunches** you will get the chance to taste culinary delights from many different countries.

The majority of our language students are between 20 and 50 years old. We also have younger and older language students. The minimum age for the General English Group Course Intensive is 16.

Our most popular course

Our most popular course is the **General English Group Course Intensive** which may be combined with private lessons in the afternoons (**Intensive Plus 4** or **Intensive Plus 10**). We also offer **One-to-One** and **Two-to-One** courses for students who wish to prepare for an exam or who need English for their jobs.

**We hope that you enjoy reading this course guide and that we will have the opportunity to welcome you to the Slaney Language Centre soon.**



## Why Ireland?

Ireland is a **relaxed, friendly and welcoming** country. It is known as the **country of "one hundred thousand welcomes."** This will surely be extended to you on your arrival. Most Irish people address each other by their first name and almost every Irish man or woman enjoys a chat with neighbours, friends and visitors.

**There is a famous Irish saying: 'A stranger is a friend you haven't met yet'.**

English is the first language spoken in Ireland. **Irish people speak with clarity and the standard of Irish education is high.** Therefore you will have the opportunity to practise and develop your language skills wherever you go in Ireland.

Irish **traditional music, storytelling and sports** are very popular with young and old in Ireland.

Age is not important in Ireland as **young and old socialise together.** Traditional **pubs** are a meeting place for Irish people of all ages. They are places to catch up with friends, relax, unwind and enjoy a Guinness, Powers or Jameson whiskey and listen to a traditional music session.



Student and hostmother

Ireland's climate is considered to be mild and changeable. This is due to the Gulf Stream in the Atlantic Ocean. Temperatures range from 15° to 20°C in summer, around 10°C in spring and autumn and 4° to 7°C in winter. However the Irish weather is unpredictable and you should be prepared for the unexpected.

**What other country gives you the opportunity to experience all four seasons in one day?**

## Why Wexford?



Wexford Harbour



Hook lighthouse, Wexford



Curraclloe, Wexford

No matter what time of year you choose to be here, Wexford always has something to offer.

Watch the St Patrick's Day parade in **March**. Visit our beautiful never-ending sandy beaches. Go in for a swim in **Summer**. Enjoy our Slaney Language School barbeque in **June (in June 2016 The Slaney Language Centre will be 17 years old)**. Be here during the internationally renowned Wexford Festival Opera in **October** or come in **November/December/February** to avail of free weekly conversation classes and to enjoy the Winter Wonderland at Christmas time.



Traditional musicians in a Wexford pub



# Why the Slaney Language Centre?

- Established in 1999- **17 years of experience** in teaching English as a foreign language
- **Fully recognised** by the Irish Department of Education (QQI, ACELS)
- Members of the language school association **MEI**
- **Full Learner Protection policy** in place
- **Small classes** for effective learning (max 8 from September to June, max 10 in July and August, max 12 for Cool Kids and Keen Teens courses)
- Log into our **school management programme** and view your student profile, your courses and your accommodation at any time.
- **Student handbook** and detailed **information pack** supplied to each student

## Our facilities include:

- 5 bright classrooms (8 in July and August)
- Common room (for students and teachers to relax)
- Self-study room (including library and audio visual material)
- FREE WIFI
- Gardens
- Office

Slaney Language Centre students can take part in a variety of **exciting afternoon activities/excursions and weekend daytrips**. We believe that language learning is not bound to classrooms and that students should practice and develop their language skills as much as possible in their free time. We encourage our language students to take part in our activities and to join local clubs.



### July and August

- 3 afternoon/evening activities per week
- 1 daytrip each weekend

### February, March, April, May, June, September and October

- 2 afternoon/evening activities per week
- 1 daytrip each weekend

### November and December

- Coffee club (free conversation class with your teachers for full-time students)

**Please note:** A minimum of 5 students is required for an afternoon activity. A minimum of 10 students is required for a weekend daytrip.



Birdwatching on the Saltee Islands

### In 2015 we offered the following activities:

Beachwalks, boat trips, fishing trips, hurling (our traditional Irish sport) workshops, surfing, Irish dancing and Bodhrán (our traditional drum) workshops, kayaking, horse-riding, golf, open air museum, international lunches, barbeques, Irish music sessions, Irish baking workshop, karting, climbing, quad biking, bowling, sandcastle building competitions, gardens and country houses, trip to the traditional Irish fishing village Kilmore Quay, daytrips to the Hook Lighthouse, Glendalough, Kilkenny, Newgrange, Dublin, Saltee Islands and weekend trips to the Cliffs of Moher.



Surfing



International lunch

All these activities will be offered again in 2016 and we are sure to try out some new ones. We endeavour to accommodate any requests that students have regarding outings and activities.

# Course Information

We use the course book 'New English File' for the General English Group Course. New English File textbooks include considerations for a variety of media and are vividly presented, to engage all classes. Many exercises are designed for groups of students, with interaction in mind. There are many exercises that can be completed in private so that the text book bridges classroom study with personal study.

We encourage our language students to take the TIE exam at the end of their courses.

## What is the TIE exam?

The Test of Interactive English (TIE) is a task-based oral and written test graded according to the Council of Europe Framework. The test is recognised by ACELS, a service of QQI (Quality and Qualifications Ireland) a statutory body of the Department of Education and Skills. It is designed specifically to meet the needs of all students coming to Ireland to learn and improve their English.

TIE has been designed for students of any ability, over the age of 18 as a follow-on to both long or short courses in language schools. It is a flexible, learner-centred exam that can accommodate the needs and interests of learners whatever their level of English, age, cultural or educational background. The test is task-based with the content chosen by each individual learner. There is no specific preparation course required – the exam can tie in with the students' existing curriculum.

## Where and when can I sit the TIE exam?

TIE can be taken at the IELTS centre in Dublin on one day per week. The exam has to be booked only 14 days in advance. This makes the TIE an excellent end of course exam for Slaney Language Centre students.

Students will go home with their logbook and an **official 'Quality and Qualifications Ireland' TIE certificate** as tangible evidence that their time spent at Slaney language Centre was worthwhile and productive. The exam fee including postage is €102. More information at [www.tie.ie](http://www.tie.ie)

**Our teachers are experienced in preparing students for international exams such as the IELTS, BEC, Cambridge First, Cambridge Advanced and Cambridge Proficiency.** If you wish to prepare for **any of the above exams** we would advise you to book a one-to-one course, the General English Group Course Intensive Plus 4 or the General English Group Course Intensive Plus 10.

## Tailor-made language courses for groups

We offer tailor-made language courses for groups such as secondary school students, English language clubs, etc. Great innovative programmes including debates, street lessons, presentations, exciting activities, excursions and more. Very competitive rates in the off-season.

**Tell us about your group's requirements and we will design a programme for you.**





## SLC Specialised Courses

**Family Courses** for parents and their children, grandparents and their grandchildren, or aunts/uncles and their nieces/nephews.

**21 March to 1 April** (min age: 6)

**18 to 29 July** (min age: 6)

**1 to 12 August** (min age: 6)

**15 to 26 August** (min age: 6)



Detailed information: page 15

## Learn English and play Golf

Includes unlimited golf, Slaney Language Centre activities and more. **21 March to 1 April**. Detailed information: page 17



## Irish Culture Course tailored to people over 50

Includes eight afternoon activities/excursions and a daytrip to Glendalough. **21 September to 2 October**. Detailed information: page 16



## Learn English and be here for the Festival

Be here at the best time of the year, during the Wexford Festival Opera. Includes two festival events and a daytrip to Newgrange. **24 October to 4 November**. Detailed information: page 16



## NEW: elements of TIE exam preparation are now included in the General English Group Course Intensive.

For more information check: [www.tie.ie](http://www.tie.ie)



## Combine an English course with work-experience on an Irish farm

(it's called Wwoofing). Detailed information: page 18



## Our core team



**Lisa Bartsch**  
B.A., PGCE in Ed.  
*Managing Director*

Other languages:  
German (native speaker)



**Emma Misiti**  
B.A., T.E.F.L.  
*Director of Studies, Teacher*

Other Languages:  
French (native speaker), Spanish (fluent), Italian (elementary), German (elementary)

*16 years teaching experience*



**Anna Murphy**  
*Administrator & Accommodation Officer*

Other skills:  
Irish music teacher



**Kristina Arthurs**  
B.Comm., T.E.F.L.  
*Teacher*

Other languages:  
Hindi (native speaker, fluent)

*2 years teaching experience*



**Susan Doyle**  
B.A., T.E.F.L.  
*Teacher*

Other languages:  
Japanese (elementary)

*Over 20 years teaching experience*



**Sinead Power**  
B.A., M.A., T.E.F.L.  
*Teacher*

Other Languages:  
Irish (fluent), Spanish (elementary)

*12 years teaching experience*



**Jim Shannon**  
*Bus Driver & Tour Guide*

If you want to meet an authentic Irish charmer, then Jim is your man!

## Your first day with us

Your host family, B&B provider etc. will show you where and when to get the bus to the Slaney Language Centre.



Busdriver Jim

## Your first lesson will start on the bus!

**Jim, the bus driver** will make sure that you don't miss the school bus as he will look out for you. Like most Irish people Jim loves talking and he will tell

you plenty of stories, teach you new expressions and entertain you on all your trips.

The bus fare from town to our language centre is €2.50 per one-way trip or can be prepaid for the week for €21.

At the school, **Lisa will welcome you** and give you all the information you need. As we will have already sent you a placement test along with your booking confirmation you can start your lessons straight away without any delay.

There is always time to have a chat or ask for help and information, so please feel free to ask us any questions that you may have.



Slaney Language Centre quiz



## How to get here

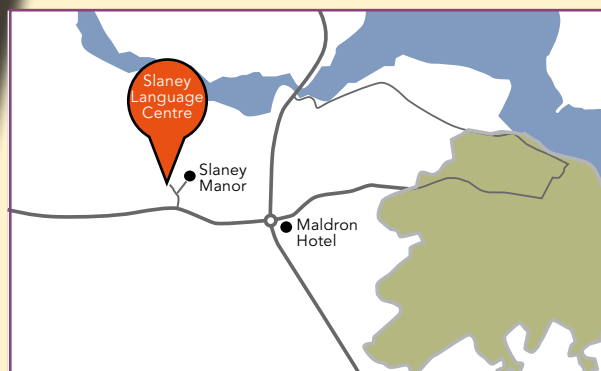


The majority of our language students arrive at Dublin Airport and travel down to Wexford by public bus or train. Buses are easy to locate. They leave from the coach park at zone 14 which is well signposted.

You can download timetables at <http://www.wexford-language.com/location/>

**A member of your host family will meet you at Wexford bus station on the day of your arrival.**

If you are coming with friends or family you might prefer to book a taxi from Dublin Airport direct to your accommodation in Wexford for €160. Some language students arrive at Waterford Airport or Rosslare Europort. You may take public buses to Wexford or alternatively book a taxi for €75 (Waterford) or €40 (Rosslare). We share the same entrance as Slaney Manor and are located right beside the Manor House, approximately 500m from the Maldron Hotel roundabout.



## Student comments

We've really appreciated all what you did to make us enjoy our stay and the fact that you were successful with Filippo too, is really something as he is certainly the most difficult and critical of our family. Moreover, as a primary school teacher I think that you were great in getting children so involved in quite all the afternoon activities offered by your school: the crab fishing, the international lunch, the football match, the goodbye song etc. Now it's my turn to say to you: Well done! We'll surely recommend your school to our family and to my pupils and we know that if we're coming back to the 'fantastic Ireland', we'll come to Wexford to say hello to you, no doubt!

### **Luisa, 42, Primary School teacher who attended a family course**

Hello everybody, a short email to tell you I arrived at home. Today I'm still a little bit in Ireland, it's raining (lol). I would like to thank everybody for the quality of your welcome and of the lessons but also for the friendly atmosphere in the school. Now I know to find the sun in Ireland you only have to look the eyes and the smiles of Irish people and to find the warmth you have only to listen their heart. Thank you very much for everything.

### **Christian, 43, French, who attended an Intensive Plus Course**

I miss you. You made me feel so good. I'd like to come back some day. The atmosphere in the school is genuine, brilliant and the surroundings beautiful. The best thing is that you feel relaxed and don't have any pressure to learn English and I think, this is really important, mainly for people shy like me. The organisation is very accurate and the skills and quality of teachers are fantastic.

### **Jose from Spain who attended a One-to-One Course**

We would like to thank all of you for everything! It's hard to believe that we have to leave Ireland today. We had such a great time and are very sad that we have to leave. It was a pleasure for us to spend 5 weeks together with you. We learned so much, our English has improved a lot and we enjoyed all the activities with you. The time in class and also our work-experience were really good experiences. It was not only a school of teaching English, it was like a big family!! We wish you all the best and hope that you'll stay as you are because you are such a great team. A million thanks to everyone of you! We would love to come back next year.

### **Alissa, 21 and Tanja, 19, from Germany who attended the English and Internship Course**



I appreciate that I could learn English at the Slaney Language Centre. The school was just as I imagined. The class was small and I could have enough opportunity to speak English. The atmosphere was so friendly. I felt the distance between teachers and students was very short. Every teacher was eager to meet the needs of students. I could know and understand more about Ireland this time through the stay in Wexford. And I could exchange with lots of people. It was a very valuable experience for me. I look forward to visit Wexford and see you again some day.

### **Tomoko, 61, teacher, Japanese who attended an Intensive Plus Course**



Have I told you that we had a great time in Ireland and that you are very much to blame for that? Have I told you that Anita's helpful assistance together with Lisa's made it all very easy-going? That we absolutely enjoyed every activity, the weather, even the classes, the entertainment by the Great Circus Ring Master Jim, the food, the landscape, the music.... should I go on? Suffice to say that Javier jr wanted to stay and live in Ireland. All the best and as we say in Spanish – a big fat hug -.

### **Javier, 50, Spanish, School principal who attended a Family Course**

I really appreciate everything you've done for me. Everyone I met in the school helped me so I want to say thank you. It was a wonderful time. I had a great experience. Thank you.

### **Takeshi, 32, Japanese baker, who attended the General English Group Course Intensive**



*I just wanted to let you know that my daughter came home excited, happy and very much in love with Ireland and Irish people. She told us how she felt at home, how helpful everybody was, how kind and friendly. She told us about the charming places she visited, her excellent teachers and Jim of course. Last but not least her classmates – they made a great group and she learned a lot about lives in their countries, too. I appreciate very much all you have done for Hana and wish you all the best.*

**Marie, mother of Hana (18), Czech Republic**



*Last but not least, a big compliment to Catherine my hostmother. She was so lovely and cheerful that I never felt homesick. She took care of us and did her best to make us happy. I miss you so much. And I have a big request: Please stay the way you are! I hope that many other people will also have their best time in life in Ireland, in Wexford and in your school. Thanks for this great experience!*

**Tom, 19, Austrian who attended the General English Group Course Intensive**

*I had fantastic time while studying in Slaney Language Centre! Every moment me and my kids were busy with different interesting things. It wasn't only language, but perception the new country, its traditions and the most fabulous thing- the people, beautiful, generous, with great sense of humour!*

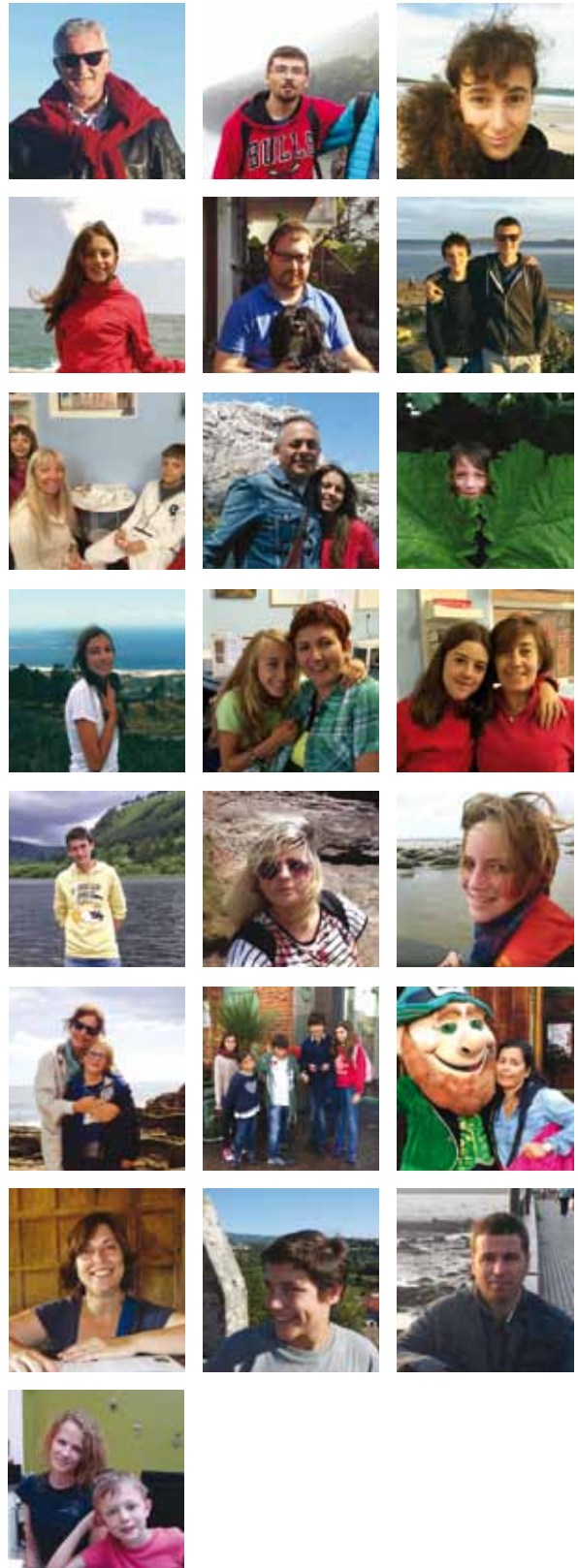
**Natalia Romyantsva (46) Russian, who attended a Family Course with her 16 year old daughter and her 8 year old son.**



## *Repeat Students in 2015*

We are so proud that many of our students come back to us for another year or tell their friends about us.

Below are some language students who came back to us in 2015 for a second, third, fourth, fifth and even sixth time. Thank you so much for coming again, we have become friends!



# General English Group Course Intensive (Small Groups)

We pride ourselves on our **low tutor-student ratio**.

We aim to develop listening, speaking, reading and writing skills with the main emphasis on conversation. We use the text book 'New English File' and students participate in a variety of different activities. Elements of the TIE exam are included in our courses. We believe that language learning can be both enjoyable and challenging. Due to the relaxed atmosphere in our school and the small group sizes, students make significant progress in all areas of English language development. We encourage our students to take the TIE exam as an end of course exam. This is the course for parents attending our family courses.



Together with the booking confirmation we send out placement tests to our clients. Pre-testing before arrival ensures students can begin classes on their first morning. Students are placed in groups according to their level.

<b>Course dates</b>	Commencing any Monday from 15 February to 12 December*
<b>Group size</b>	2 - 8 from September to June, max. 10 in July and August*
<b>Language levels</b>	Elementary to advanced
<b>Length of lesson</b>	45 minutes
<b>Timetable</b>	9.30 - 10.15, 10.15 - 11.00, coffee break, 11.30 - 12.15, 12.15 - 13.00, lunchbreak.

No registration fee  
No charge for  
course materials

## Prices

1 week	€267
2 weeks	€245 per week
3 to 5 weeks:	€242 per week
6 to 7 weeks:	€228 per week
Long term 1 (8-17 weeks):	€202 per week
Long term 2 (18-23 weeks):	€191 per week
Long term 3 (24+ weeks):	€183 per week

Detailed progress reports on request: €5

## Price includes

- Placement test
- Course tuition (20 lessons/week)
- Weekly progress tests
- Use of internet, library and self-study materials
- Tutoring for long-term students
- End of course level assessment (2 weeks+)
- Certificate of attendance (level mentioned)
- Coffee and tea at breaktime
- Transport from Wexford bus station to accommodation on the day of arrival

# General English Group Course Intensive Plus 4

Participants of the Intensive Plus 4 Course receive **four extra one-to-one lessons** on two afternoons per week. These private lessons are specially tailored to meet your individual requirements such as exam preparation, interviewing, presenting, writing, etc.

<b>Course dates</b>	Commencing any Monday from 15 February to 12 December*
<b>Group size</b>	<b>Mornings</b> see General English Group Course Intensive <b>Afternoons</b> 1 student
<b>Language levels</b>	Elementary to advanced
<b>Length of lesson</b>	45 minutes
<b>Timetable</b>	<b>Group:</b> 9.30 - 10.15, 10.15 - 11.00, coffee break, 11.30 - 12.15, 12.15 - 13.00, lunchbreak <b>One-to-one:</b> Two afternoons 14.00 - 14.45, 14.45 - 15.30 (subject to change)

## Prices

1 week:	€411
2 weeks:	€389 per week
3 to 5 weeks:	€386 per week
6 to 7 weeks:	€372 per week
Long term 1 (8-17 weeks):	€336 per week
Long term 2 (18-23 weeks):	€325 per week
Long term 3 (24+ weeks):	€317 per week

Detailed progress reports on request: €5

## Price includes

- Placement test
- Course tuition (20 lessons/week + 4 one-to-one lessons/week)
- Weekly progress tests
- Individual design of private lessons
- Use of internet, library and self-study materials
- End of course level assessment (2 weeks+)
- Certificate of attendance (level mentioned)
- Coffee and tea at breaktime
- Transport from Wexford bus station to accommodation on the day of arrival

No registration fee  
No charge for  
course materials

\* When Monday is a National Holiday, courses start on a Tuesday.



# General English Group Course Intensive Plus 10

Participants of the Intensive Plus 10 Course receive **ten extra one-to-one lessons** (two lessons/afternoon) per week. These private lessons are specially tailored to meet your individual requirements such as exam preparation, interviewing, presenting, writing, etc.

<b>Course dates</b>	Commencing any Monday from 15 February to 12 December*	
<b>Group size</b>	<b>Mornings</b> see General English Group Course Intensive	<b>Afternoons</b> 1 student
<b>Language levels</b>	Elementary to advanced	
<b>Length of lesson</b>	45 minutes	
<b>Timetable</b>	<b>Group:</b> 9.30 - 10.15, 10.15 - 11.00, coffee break, 11.30 - 12.15, 12.15 - 13.00, lunchbreak <b>One-to-one:</b> 14.00 - 14.45, 14.45 - 15.30 (subject to change)	

No registration fee  
No charge for  
course materials

## Prices

1 week:	€601
2 weeks:	€579 per week
3 to 5 weeks:	€576 per week
6 to 7 weeks:	€562 per week
Long term 1 (8-17 weeks):	€510 per week

Detailed progress reports on request: €5

## Price includes

- Placement test
- Course tuition (20 group lessons/week + 10 one-to-one lessons/week)
- Weekly progress tests
- Individual design of private lessons
- Use of internet, library and self-study materials
- End of course level assessment (2 weeks+)
- Certificate of attendance (level mentioned)
- Coffee and tea at breaktime
- Transport from Wexford bus station to accommodation on the day of arrival



## Academic Year Programme

The academic year programme consists of 25 weeks General English Group Course Intensive, including tutorials assisting students to prepare for the TIE exam. Non-EU nationals must complete the TIE exam at the end of this course. This course entitles Non-EU students to an 8 months visa in accordance with the immigration regulations.

**Price** €4,575

TIE exam fee including postage: €102

Please check  
[www.wexford-language.com/special-offers/](http://www.wexford-language.com/special-offers/)  
for our spring and autumn promotions,



# One-to-One and Two-to-One Courses

These courses are designed for people who wish to have intensive and individual (Business, General English or exam preparation) tuition. These classes are specially tailored to meet your individual requirements. Please inform us of your needs and we will be happy to design a course for you. Two-to-One Courses are designed for friends or colleagues with the same course requirements and levels of English.

<b>Course dates</b>	Commencing any Monday from 15 February to 12 December*
<b>Group size</b>	1 student / 2 students
<b>Language levels</b>	Beginners to advanced
<b>Length of lesson</b>	45 minutes
<b>Timetable</b>	9.30 - 10.15, 10.15 - 11.00, coffee break, 11.30 - 12.15, 12.15 - 13.00, lunchbreak.

No registration fee  
No charge for  
course materials

## Prices

<b>One-to-One</b>	€699 per week
<b>Two-to-One</b>	€408 per week

Detailed progress reports on request: €5

## Price includes

- Course tuition (20 lessons/week)
- Weekly progress tests
- Individually designed courses
- Use of internet, library and self-study materials
- End of course level assessment
- Certificate of attendance (level mentioned)
- Coffee and tea at breaktime
- Transport from Wexford bus station to accommodation on the day of arrival



\* When Monday is a National Holiday, courses start on a Tuesday.

# Business English for Executives Full Immersion Course

This 5 to 10 day course is designed for the modern business executive or professional who requires English in the workplace. We offer training for a wide variety of management disciplines including Marketing, Human Resources, Production Control, Training, Quality Management, Technical Support, Planning and Communications.

We focus on developing and upgrading your skills. The programme content is tailored to meet your specific needs. One-to-one tuition, intensive teaching methods and a supportive approach are offered. Rapid progress is ensured as we enable you to use English with increased confidence and effectiveness in your working environment. A similar programme for small groups is also available to companies. Please inform us of your requirements.

<b>Course dates</b>	Commencing any Monday from 15 February to 12 December*
<b>Group size</b>	1 student
<b>Language levels</b>	Elementary to advanced
<b>Daily programme</b>	8 lessons of 45 minutes each, 9.30am - 5.30pm

No registration fee  
No charge for  
course materials

<b>Price</b>	€1,722 per week
--------------	-----------------

## Key benefits

- Detailed needs analysis
- Designated mentor
- One-to-one tuition
- Full immersion
- Total attention to your needs

## Price includes

- Level assessment test
- Course tuition (40 one-to-one lessons)
- Weekly progress tests
- Use of internet, library and self-study materials
- Assessment and Certification
- **Airport transfer**
- Detailed progress report



# Family Courses

Parents: General English Group Course Intensive (for course information please check page 12)

Children aged 6 to 10: Cool Kids Course

Children aged 11 to 15: Keen Teens Course

Family Courses are usually two week courses but may also be booked for three or four weeks.

Cool Kids Course: Our youngest students are learning English through a variety of child centred, fun filled activities under the expert supervision of fully qualified teachers. Activities include songs, board games, arts and drama.

Keen Teens Courses: Our teenage students are being placed into a group according to their levels of English. We usually have two to three different level groups. Keen Teens courses are General English Group Courses focusing on topics interesting for this age group.

The main focus of both, the Cool Kids and the Keen Teens courses are on conversation. It is important to us that the children enjoy communicating in English.

Courses		Easter*	Summer 1	Summer 2*	Summer 3*
Course start date	Monday	21 March	18 July	1 August	15 August
Course finishing date	Friday	1 April	29 July	12 August	26 August
Length of course		1 or 2 weeks	2 weeks	2 weeks	2 weeks
Age of children		6-14 years	6-14 years	6-14 years	6-14 years

\* Mondays 28 March & 1 August are national holidays. Our school will be closed on these days but an alternative programme is offered.

## Prices - Cool Kids and Keen Teens Courses:

1 week:	€250
2 weeks:	€230 per week
3 weeks:	€225 per week
4 weeks:	€220 per week

## Discounts for siblings

(please note that discounts only apply if at least one parent also attend a course with us):

2 children:	
1 week:	€225 per child
2 weeks:	€215 per child per week
3 weeks:	€210 per child per week
4 weeks:	€205 per child per week

3 or more children:	
1 week:	€215 per child
2 weeks:	€205 per child per week
3 weeks:	€200 per child per week
4 weeks:	€190 per child per week

Detailed progress reports on request: €5

Parents' Prices: see General English Group Course Intensive page 12.

## Accommodation Options

Self-catering apartments or host family accommodation.

early booking  
recommended

No registration fee  
No charge for  
course materials



## What our students say.....

"I've already told you but I want to affirm it once again, our two weeks spent with you have been the best we've ever had. By now it's our third time in Ireland and we are a bit of experts! As a matter of fact the atmosphere at your school is really warm and friendly and we immediately felt at home."

**Luisa, 42, Primary School teacher who attended a family course**

# Irish Culture Course for People Over 50

A course for the 'young at heart'!

Make friends with like-minded people from all over the world, improve your English and experience true Irish culture! The exciting programme of activities and excursions includes a daytrip to the famous early Christian monastic settlement of Glendalough with a stop at Avoca handweavers in the Wicklow Mountains. Detailed information including a sample timetable at [www.wexford-language.com](http://www.wexford-language.com)

<b>Course dates</b>	19 to 30 September
<b>Length of course</b>	2 weeks
<b>Group size</b>	2 - 8 students
<b>Language levels</b>	Elementary to advanced (A1 to C1)
<b>No. of lessons</b>	40
<b>Length of lesson</b>	45 minutes

## Package price

One week: €360

Two weeks: €355 per week

Detailed progress reports on request: €5

## Accommodation Options

Full board host family accommodation  
(single room)

Full board host family accommodation  
(single room with private bathroom)

Self-catering host family stay (single room)

B&B, guesthouse, hotel

Self-catering apartment

## DO ASK US FOR A SAMPLE ACTIVITY TIMETABLE

Note that younger adult English language students may also be attending this course

No registration fee  
No charge for course materials

## Price includes

- Registration
- Level assessment
- English tuition (40 lessons)
- Weekly progress tests
- **8 afternoon/evening activities**
- **Daytrip to Glendalough**
- **Daily bus from Wexford town to our language centre**
- Coffee/tea at breaktimes
- Certificate of attendance (level mentioned)



# Study English during the Festival

Attend a course with us and be in Wexford at the best time of the year, during the Wexford Festival Opera. A course for anybody with an interest in culture, art, music and literature.

The highly acclaimed, world famous, Wexford Festival Opera runs from 26 October to 2 November 2016. Visitors from all over the globe attend the festival every year. Experience Wexford at its best, as the town is full of life, with daytime and evening events of music, theatre, culture and art for all ages and all tastes.

<b>Course dates</b>	Monday 24 October to Friday 2 November 2016
<b>Length of course</b>	1 or 2 weeks
<b>Group size</b>	2 - 8 students
<b>Language levels</b>	Elementary to advanced (A1 to C1)
<b>No. of lessons</b>	36 plus a tour of the Irish National Park on Monday 31 October
<b>Length of lesson</b>	45 minutes
<b>Timetable</b>	9.30 to 10.15, 10.15 to 11.00, coffee break, 11.30 to 12.15, 12.15 to 13.00, lunch break

No registration fee  
No charge for course materials

## Prices

1 week: €325

2 weeks: €318

Detailed progress reports on request: €5

## Price includes

- Registration
- Study materials
- Level assessment
- Course tuition (36 lessons plus a visit to the Irish National Heritage Park)
- Weekly progress tests
- **Dress rehearsal at Short opera performance**
- **Lunchtime recital at St Iberius Church**
- **Daytrip to Newgrange on Sunday 31 October**
- **Daily bus from Wexford town to our language centre**
- End of course assessment
- Certificate of attendance (level mentioned)
- Transport from Wexford bus/train station to your accommodation on the day of your arrival





# Learn English and Play Golf in Ireland Easter 2016

Combine an English language course with your favourite past time. County Wexford is renowned for its many beautiful and challenging golf courses.

The course includes unlimited golf at Wexford Golf Course and golf at a nearby golf course. While the young golfers will be taught English in a group of 11 to 15 year old language students, adult golfers (16+) join the General English Group Course Intensive. More detailed information including a sample timetable: [www.wexford-language.com/learn-english-and-play-golf-in-ireland](http://www.wexford-language.com/learn-english-and-play-golf-in-ireland)

<b>Course start date</b>	Monday 21 March	Monday 28 March is a national holiday. Our school will be closed
<b>Course finishing date</b>	Friday 1 April	on this day but an alternative programme will be offered.
<b>Group size</b>	General English: max 8, Keen Teens: max 12	
<b>Language levels</b>	A1 to C1	
<b>No of lessons</b>	36 plus a tour of the Irish National Heritage Park on Easter Monday	
<b>Length of lesson</b>	45 mins	
<b>Timetable</b>	9.30 to 10.15, 10.15 to 11.00, coffee break, 11.30 to 12.15, 12.15 to 13.00, lunch break	

## Package prices

One week booking:	€1,212
Two week booking:	€1,000 per week
Detailed progress reports on request:	€5

## Local Golf Clubs

Wexford Golf Course: [www.wexfordgolfclub.ie](http://www.wexfordgolfclub.ie)  
Rosslare Golf Course: [www.rosslaregolfclub.com](http://www.rosslaregolfclub.com)  
Enniscorthy Golf Course: [www.enniscorthygolfclub.ie](http://www.enniscorthygolfclub.ie)

## Price includes

- 20 English lessons per week (one lesson = 45 min)  
Instead of classroom lessons a tour of the Irish National Heritage Park will be offered on Easter Monday.
- Weekly progress tests
- **Full Board hostfamily accommodation (single room, we will try to place all golfers with hostfamilies who have an interest in golf themselves)**
- **Airport pick up and drop off**
- **Unlimited golf at Wexford Golf Course**
- **Local transfers**
- **Three non-golfing Slaney Language Centre activities per week** including transport and admission
- **Assistance with bookings of greenfees and golf lessons** (golf lessons at extra cost)
- One day per week, **golf at a nearby golf course** (See list of local golf clubs opposite)

\* When Monday is a National Holiday, courses start on a Tuesday.

## *What our students say.....*

"School activity is busy and diverse, (mention the international picnic!!!). The teachers are attentive and the level of education is really high. And what was really important for me, my young son 8 years old, was happy with his studying and his teacher and friends!! Sure enough that next summer we will go again to Wexford with great pleasure!"

**Natalia Romyantsva (46) Russian, who attended a Family Course with her 16 year old daughter and her 8 year old son.**

"I just wanted to thank you for the wonderful three weeks we spent in your school. These three weeks were the best time in my life. A special thanks to my teachers Marita, Christian and Sinead. They did a really good job and because of them we didn't feel like in a boring school but in an exciting group where we had fun and also learnt a lot."

**Tom, 19, Austrian who attended the General English Group Course Intensive**

## Language Course and WWOOFing

### World Wide Opportunities on Organic Farms

Would you like to stay in Ireland a bit longer and practise your language skills? Do you like nature and animals? Students on the English and WWOOFing project start with an English language course (min 2 weeks). Following the course the participant will work on an Irish farm and receive accommodation in return. WWOOFing has become very popular in recent years with people who like a hands-on approach to working and learning in a natural environment.

The organisation WWOOF (World Wide Opportunities on Organic Farms) lists organic farms in Ireland who take wwoofers for a couple of weeks.

[www.wwoof.ie](http://www.wwoof.ie)



## English and Internship Programme (October to June only)

Students on the English and Internship Programme start with an English language course (min 4 weeks). Following this the participant will work with an Irish company (unpaid work). This programme allows students to gain practical work-experience abroad and to improve their English fluency in a professional, English speaking environment.

Together with your booking confirmation we will send you a level assessment test. You will need to return the completed test to our school together with a CV, written in English.

<b>Minimum length of English course</b>	4 weeks
<b>Age group</b>	20 to 30 years
<b>Minimum English level</b>	Upper-Intermediate B2
<b>Minimum work placement</b>	2 weeks
<b>Maximum work placement</b>	8 weeks

**Placement fee** €278

limited  
availability



## English Evening Classes including TIE exam preparation **NEW**

These classes are designed for non-nationals living and working in Wexford who would like to prepare towards the TIE exam which is recognised by Quality and Qualifications Ireland (QQI). The classes are result driven and require homework assignments towards the TIE exam.

The TIE exam can be taken in Dublin any week and must be **booked only two weeks in advance**. For more information on the TIE exam please check: [www.tie.ie](http://www.tie.ie)

For the TIE you need to complete three tasks and record them in a log book:

- Carry out a short project on a subject of interest to you.
- Read a book of your choice in English at your level
- Follow a news story in the newspaper and/or on TV or radio

**Course dates:** Wednesday evenings from 19.00 to 21.00  
*Should there be only one student of a particular English level, classes will be from 19.00 to 20.00*

### Course fees

Bookings of 4 to 7 weeks €39 per week  
Bookings of 8 weeks or longer €35 per week

TIE exam fee including postage: €102





# Accommodation

## Stay with a local family

### Full board or self-catering

Experience life in a host family and improve your fluency by talking to local people. Our host families have been carefully selected and most of them have been taking students from our language school for many years. They will make sure that you feel welcome and at home during your stay. We have a variety of host families with different backgrounds and interests. Some are single people or older couples, others have many children and a very lively household. Some families have pets. If you have any preferences please let us know.

Our host families are located within walking distance of Wexford town centre and only a short stroll from a bus stop for the morning bus to our language centre.

Please inform us of any special requirements you may have, e.g. if you are a vegetarian, or have allergies to cats or dogs etc.

Please also let us know if you have any medical conditions that require a special diet, such as diabetic food or food suitable for coeliacs. In July and August students are requested to arrive and depart on Saturdays.

### Prices per week

(full board – breakfast, packed lunch, evening meal\*, 7 nights)

Single room:

€204 (€29.14 per night)

Sharing with a friend:

€180 (€25.71 per night)

Single room with private bathroom: €234 (€33.43 per night)

Single room during SLC winter holidays: €234 (€33.43 per night)

*\*There is a supplement of €50 per week if any specific diet is required e.g. diabetic food or food suitable for coeliacs.*

### Prices per week (self-catering - 7 nights)

Single room: €134 (€19.14 per night)

Sharing room with a friend (limited availability)  
€114 (€16.29 per night)

### Homestay only (limited availability - 7 nights)

€300 per week (€42.86 per night)



Once we have placed you with a host family you can just log into our school management programme to view your family's contact details, a photograph of all members of the family, photographs of bedrooms and your host family's house on google maps.



## Self-Catering Apartments & Houses

If you prefer to cook your own meals you may be interested in renting an apartment or a house in Wexford town, in the countryside or by the beach etc. We recommend self-catering accommodation especially to families attending our parent and child course. This gives families freedom to come and go as they please, have meals at whatever time is convenient to them and to have food to suit their own taste.

Please let us know which size apartment you are looking for and if you are planning to rent a car. We will then e-mail details of available apartments and houses. In July and August students are requested to arrive and depart on Saturdays. Prices range from €450 to €850 per week depending on size, location and season.

**Administration fee may apply: €50**  
(for booking and support)

## B&B Accommodation

### B&B, Guesthouses & Hotels in Wexford Town

If you are not planning to rent a car we would advise you to book a B&B, guesthouse or hotel within walking distance of the town centre. Due to the wide selection of accommodation in the area, individual tastes and needs are sure to be met. Please let us know your requirements and we will be happy to find you suitable accommodation.

**Administration fee may apply: €50**  
(for booking and support)

### Right beside the Slaney Language Centre

If you require quality accommodation in a relaxing scenic location this is the right choice for you. You can take it easy in the morning, as the accommodation is located right beside

More →

## Useful Websites

our language school. We recommend this accommodation especially to language students who are renting a car. A taxi to the centre of town costs approximately €8.

### The Manor House

Georgian style bedrooms en-suite, with four-poster beds, T.V., tea-making facilities and hairdryers.

#### Prices per week Bed and Breakfast

€430 per person sharing  
€530 single room



### The Courtyard B&B

High quality en-suite bedrooms with TV, tea-making facilities and hairdryers

#### Prices per week Bed and Breakfast

€280 per person sharing  
€365 single room



### Flights to Dublin

[www.aerlingus.com](http://www.aerlingus.com)  
[www.ryanair.com](http://www.ryanair.com)

### Car Rentals

[www.enterprise.ie](http://www.enterprise.ie)  
[www.europcar.com](http://www.europcar.com)  
[www.autoeurope.ie](http://www.autoeurope.ie)  
[www.hertz.ie](http://www.hertz.ie)  
[www.budget.ie](http://www.budget.ie)

### Wexford

[www.visitwexford.ie](http://www.visitwexford.ie)  
[www.wexfordopera.com](http://www.wexfordopera.com)  
[www.wexfordfringe.ie](http://www.wexfordfringe.ie)  
[www.nationaloperahouse.ie](http://www.nationaloperahouse.ie)  
[www.wexfordartscentre.ie](http://www.wexfordartscentre.ie)  
[www.wexfordraces.ie](http://www.wexfordraces.ie)  
[www.hookheritage.com](http://www.hookheritage.com)  
[www.inhp.com](http://www.inhp.com)  
[www.wowwexford.com](http://www.wowwexford.com)  
[www.wexlive.com](http://www.wexlive.com)  
[www.threesisters2020.ie](http://www.threesisters2020.ie)

### English Language Exams

TIE exam: [www.tie.ie](http://www.tie.ie)

Cambridge Exams:  
[www.cambridgeenglish.org/exams](http://www.cambridgeenglish.org/exams)  
IELTS: [www.ielts.org](http://www.ielts.org)

### Flights to Waterford

[www.flywaterford.com](http://www.flywaterford.com)

### Bus and Train Services

[www.wexfordbus.com](http://www.wexfordbus.com)  
[www.buseireann.ie](http://www.buseireann.ie)  
[www.irishrail.ie](http://www.irishrail.ie)

Please contact us if you require taxi or minibus services.

### Ireland

[www.discoverireland.com](http://www.discoverireland.com)  
[www.lookaroundireland.com](http://www.lookaroundireland.com)

### Irish Weather

[www.met.ie](http://www.met.ie)

### Visa Information

[www.justice.ie](http://www.justice.ie)  
[www.inis.gov.ie](http://www.inis.gov.ie)

### Online Payment Option

<https://paytostudy.com>

## Other Details

### Please Note

- **Courses may be combined.** E.g. you may book the General English Group Course Intensive Plus 10 for the first week, the General English Group Course Intensive Plus 4 for the second week, and a One-to-One Course for the third week.
- The SLC will be closed on all public holidays and for eight days in winter. When Monday is a National Holiday, courses start on a Tuesday.
- **The entry level for group courses is elementary (A1). Students who test lower must book a One-to-One Course.**
- The SLC reserves the right to have a maximum of nine students (year round) eleven students (July and August) or thirteen students (Keen Teen course) in a group in order to Match language levels more effectively. This is an exception and not the norm.
- Should a student's level in any week not match any existing group, we will be pleased to provide the student with 10 private lessons plus self-study activities.

- To avoid misunderstandings, please read our terms and conditions carefully.
- The minimum entry age for the General English Group Course Intensive is 16.

## Holidays in 2016

17 March, 28 March, 2 May, 6 June, 1 August, 31 October. Fees will not be refunded for public holidays.

Winter holidays start on Monday 19 December 2016. Courses start again on Monday 13 February 2017.

## Payment Options

1. Electronic bank transfer to our bank account: details listed on the following page.
2. **New:** Pay through Pay to study: <https://slaneylanguage.paytostudy.com/>  
**We recommend Pay to study especially to students from countries outside of the EURO zone.**
3. Through paypal.



# Terms and Conditions

## Registration, Payment and Booking

Registration with our language centre is **free of charge**. On receipt of the application form and a deposit of €200 we will send you confirmation of your place on the selected course and an invoice for the balance of fees. The final payment must be made three weeks before beginning the course. The deposit is non-refundable and is part payment of fees, not an additional charge.

**Payment options:** See previous page

### Bank account

The Slaney Language Centre Ltd., AIB Bank,  
North Main Street, Wexford, Ireland  
Sort Code: 93-33-41, Account no: 07922081  
Iban Code: IE 73AIBK93334107922081  
Swift Code: AIBKIE2D

### Bank charges

We regret that any bank charges incurred by the school on your behalf will be passed on to you on arrival.

## Cancellations

All cancellations must be made in writing. The cancellation date will be the date on which the SLC receives the written cancellation.

### Cancellation fees

- Up to two weeks before commencement of course: deposit (€200)
- 8 days to 14 days before commencement of course: 50% of full payment
- 7 days notice or less: 100% of full payment

Tuition or accommodation fees are non refundable if a participant arrives late or wishes to leave a course early. The SLC will not refund any fees for absence or illness. Students on courses of 10 or more weeks' duration may break their study for a holiday. The duration of the holiday, giving exact dates, must be stated when making the booking. There will be no refund for any absence or shortening of the duration of the course as a result of the holiday.

### Visa

Nationals of the following Non-EU countries do not require a visa to enter Ireland:

Andorra, Antigua, Argentina, Australia, Bahamas, Barbados, Belize, Bolivia, Botswana, Brazil, Brunei, Canada, Chile, Costa Rica, Dominica, El Salvador, Fiji, Grenada, Guatemala, Guyana, Honduras, Hong Kong, Iceland, Israel, Japan, Kiribati, Lesotho, Liechtenstein, Malawi, Malaysia, Mauritius, Mexico, Monaco, Nauru, New Zealand, Nicaragua, Macau, Maldives, Norway, Panama, Saint Kitts and Nevis, Saint Lucia, Saint Vincent and the Grenadines, San Marino Seychelles, Singapore, Solomon Islands, South Africa, South Korea, Swaziland, Switzerland, Taiwan, Tonga, Trinidad and Tobago, Tuvalu, United States, Uruguay, Vanuatu, Vatican City, Venezuela, Western Samoa.

All other Non-EU countries require a visa. Please contact your nearest Irish embassy for detailed information and allow at least 8 weeks to process your VISA application. The Irish Department of Justice requires proof of payment and proof of proper medical and travel insurance before they will issue a visa.

In case of a visa refusal we will refund all fees paid (except for an administration fee of €150).

Attendance is obligatory for all visa students.

For further information on study visa applications please check [www.inis.gov.ie](http://www.inis.gov.ie)

### Postponements

If you cannot attend your course, you may postpone it. All

postponement requests must be made in writing. You have three months in which to inform the SLC of your new dates and pay the re-arrangement fee of €65. The SLC will hold all fees already received for the three month period. A course may only be re-arranged once.

### Our liability

The SLC reserves the right to alter prices, lesson times, activities, conditions and details without notice. The right is also reserved to decline the application at any time without liability. The SLC gives notice that all arrangements for transport, activities or for accommodation are made by the SLC as an agent upon the express condition that they shall not be liable for any injury, damage, loss, accident, delay or irregularity which may be occasioned either by reason of any defect in any vehicle or through the acts of default of any company or persons engaged in conveying the passenger, or in carrying out the arrangements of the programmes, or otherwise in connection therewith or of any family member. No responsibility is accepted for losses or additional expenses due to delays or changes in air, sea, rail, bus or other services, sickness, weather, war, quarantine, strikes, or other liability.

### Teacher's absence

In the event of a teacher's sickness or inability to travel to work due to unforeseen circumstances such as natural catastrophes the SLC will do their utmost to find cover as soon as possible. The SLC will not guarantee however, that immediate cover will be found and classes might have to be merged. No refunds will be made on these occasions.

## Troubleshooting

Should the occasion arise that you may require medical or dental treatment during your stay we can make an appointment with a reputable doctor or dentist. Please inform us about any medical condition that we may need to be aware of i.e. epilepsy, diabetes, pregnancy, etc.

## Unacceptable Behaviour

The Slaney Language Centre reserves the right to refuse admission or terminate a course without a refund, if a student's behaviour is deemed unacceptable or damaging to the reputation of the school.

# Prices at a Glance

## Course Price List 2016

	One Week	Two Weeks price per week	3-5 Weeks price per week	6-7 Weeks price per week	8-17 Weeks** price per week	18-23 Weeks** price per week	24+ Weeks** price per week
<b>General English Group Course</b> Intensive	€267	€245/week	€242/week	€228/week	€202/week	€191/week	€183/week
<b>General English Group Course</b> Intensive Plus 4	€411	€389/week	€386/week	€372/week	€336/week	€325/week	€317/week
<b>General English Group Course</b> Intensive Plus 10	€601	€579/week	€576/week	€562/week	€510/week	N/A	
<b>One-to-One Course</b> 20 lessons per week	€699	€699/week	€699/week	€699/week	N/A	N/A	
<b>Two-to-One Course</b> 20 lessons per week	€408	€408/week	€408/week	€408/week	N/A	N/A	
<b>Business English for Executives</b> Full Immersion Course	€1,722	€1,722 /week	N/A	N/A	N/A	N/A	
<b>Cool Kids &amp; Keen Teens</b>	€250	€230/week	€225/week See page 15 for more detailed price breakdown	N/A	N/A	N/A	
<b>Academic Year Programme**</b>	25 weeks at €183 per week Course Fee: €4,575						
<b>English and Golf</b> at Easter	€1,212*	€1,000* /week	N/A	N/A	N/A	N/A	
<b>Irish Culture Course</b> For people over 50 in September	€360*	€355*/week	N/A	N/A	N/A	N/A	
<b>English during the Festival</b> in October	€325	€318*/week	N/A	N/A	N/A	N/A	
<b>English Evening Courses</b>	3 - 7 weeks at €39 per week 8+ weeks at €35 per week						

**\*Package Course** (Please check course details or contact us to find out what is included.)

**\*\* Please check [www.slaneylanguage.com](http://www.slaneylanguage.com) for spring and autumn discount prices**



## Accommodation Price List 2016

Accommodation Type	Prices per week (7 nights) per person
<b>Full board family stay</b> Single room	€204 (€29.14/night)
<b>Full board family stay</b> Single room, private bathroom	€234 (€33.43/night)
<b>Full board family stay</b> Sharing with a friend	€180 (€25.71/night)
<b>Full board family stay</b> During SLC Christmas holidays	€234 (€33.43/night)
<b>Homestay only</b> (Limited availability)	€300 (€42.86/night)
<b>Self Catering family stay</b> Use of kitchen	€134 (€19.14/night)
<b>Manor House B&amp;B</b> Single room	€530
<b>Manor House B&amp;B</b> Sharing with a friend	€430
<b>Courtyard B&amp;B</b> Single room	€365
<b>Courtyard B&amp;B</b> Sharing with a friend	€280
<b>Self-catering Apartments and Houses</b>	From €400 - €900 depending on season and no. of bedrooms Administration Fee: €50 (for booking and support)
<b>B&amp;B in Town Centre</b>	From €280 Single €210 Sharing Administration Fee: €50 (for booking and support)
<b>Hotels in Town Centre</b>	From €525 Single €350 Sharing Administration Fee €50 (for booking and support)

## Insurance

The Slaney Language Centre insurance provides cover for accident/injury on the school premises only. Students are not insured by the SLC against illness, theft, damage or loss of personal effects and the SLC accepts no responsibility in the event of such occurrence.

**EU language students** should take out health and travel insurance. EU nationals should obtain form EHIC from their local social welfare office before departing. This entitles you to free emergency hospital care and attendance at certain doctors. It does not cover elective, medical or dental treatment. Any person undergoing medical treatment should bring a medical certificate and sufficient medicine to cover their stay. We strongly advise you to insure yourself against loss of fees, personal effects etc. that you may incur due to cancellations or early departures.

**Non-EU language students** can take out private student insurance through our language centre. Private student insurance is a requirement by the immigration officials for Non-EU students.

### Fee:

€55 for up to 180 days of study

€95 for up to 1 year of study

The insurance covers:

- Personal accident
- Personal liability
- Emergency medical and repatriation expenses
- Hospital confinement and benefit
- Emergency dental treatment
- Funeral expenses



Cool Kids Course



Keen Teens Course



General English Course



Irish Culture Course



Kinshella Castle, Slaney Manor  
Ferryarrig, Wexford, Ireland

Tel/Fax: +353 (0)53 91 20881

info@wexford-language.com info@slaneylanguage.com

www.wexford-language.com www.slaneylanguage.com

Company Registration No.: 382088

Founded 1999



www.facebook.com/slaneylanguagecentre

www.twitter.com/SlaneyLanguage

www.youtube.com/Slaneylanguage



Two to One Course



A classroom with a view

The Slaney Language Centre is recognised by the Department of Education & Science for the Teaching of English as a Foreign Language. Member of MEI.

