

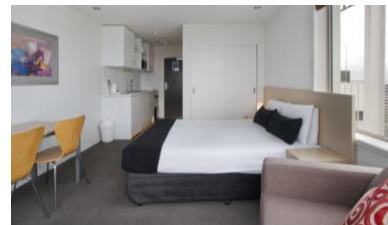
NZLC AUCKLAND

STUDENT ACCOMMODATION Options 2018

In addition to NZLC's homestay option, NZLC Auckland offers an accommodation arrangement service (\$200) where students who are 18 years or older can choose to be placed in one of our City Accommodation options. Within this Document are several accommodation providers with whom NZLC Auckland is affiliated.

Luxury Option 1 – Auckland Harbour Oaks

Auckland Harbour Oaks is the tallest apartment tower in New Zealand with 150 available rooms boasting the best harbour and city views in Auckland. Centrally located on the corner of Fort and Gore Streets, this modern complex contains 37 levels consisting of deluxe queen, one and two bedroom apartments. Each with full kitchen and laundry facilities, along with free WiFi. Auckland Harbour Oaks is a 4.5 star serviced apartment with full kitchen facilities located in the City Centre and only a 5-minute walk from NZLC Auckland.



Rates (per room): (Minimum Stay: 8 nights)

Rates (per room): (Minimum stay: 5 nights)

		Capacity	1/10/2017 – 30/04/2018		01/05/2018 – 30/09/2018	
			8 - 28 nights	29 nights +	8 - 28 nights	29 nights +
Deluxe Queen	1 Queen Bed	1 – 2	\$142/night	\$132/night	\$127/night	\$122/night
One Bedroom Executive	1 Queen Bed	1 - 2	\$152/night	\$142/night	\$137/night	\$132/night
	1 Queen Bed + 1 Rollaway Bed	1 – 3	\$187/night	\$177/night	\$172/night	\$167/night
Two Bedroom Executive	1 Queen Bed + 1 Single Bed	1 – 3	\$182/night	\$172/night	\$172/night	\$167/night
	1 Queen Bed + 1 Single Bed + 1 Rollaway Bed	1 – 4	\$217/night	\$207/night	\$207/night	\$202/night
Two Bedroom Superior	2 Queen Bed	1 – 4	\$192/night	\$182/night	\$182/night	\$177/night

Facilities:

- Full kitchen includes oven, stove, kettle, toaster, microwave, fridge and dishwasher
- Double glazed – balcony
- 1GB of internet per day (up to 28 nights)
- LCD TV with SKY channels
- Desk with chair
- Bathroom with shower, hair dryer & towels
- Laundry facilities with washing machine & dryer, iron and ironing board
- Direct dial telephone



Other Information:

Bond (Check-In Time)	8 – 28 days 1 week's rent, 29+ days 2 week's rent. Photo ID and credit card required.
Cleaning	Weekly service including linen change
Wi-Fi Internet	3GB \$15 / 1GB \$10 (valid for 24 hrs.)
Cancellation	8 to 28 Nights: 7 days' notice before 2pm / 29 + Nights: 14 days' notice before 2pm. Auckland harbour oaks reserves the right to change the rate if the length of stay falls into a different rate category
Damage	Any damage caused by guests will be charged at the time of check-out
Final Cleaning	8 to 28 Nights - \$120 plus GST / 29 + Nights - \$130 plus GST
Reception hours	24/7. Check-in 2pm. Check-out 10am.
Black Out dates	These prices do not apply during blackout dates. Black Out Dates confirmed as per 08/June/2017 but not limited to: 25th November 2017, 31 December 2017, 27th February to 03rd March 2018, 24th March to 26 th March 2018.

- All information is valid from 1 October 2017 – 30 September 2018. Please note that, as this information concerns external parties to NZLC Auckland, prices and conditions may change without notice.
- All bookings are subject to availability. / Above rates include water, power and GST

Luxury Option 2 – Quest Auckland

Quest Auckland is a brilliant choice for travellers and families as it is situated in the heart of Auckland's central business district. Only a 15 minute walk to NZLC. This Accommodation option features a continental breakfast pack, City Fitness Gym access and a full kitchen

Quest Auckland has serviced apartments including Studios, One and Two Bedroom Apartments. Studios are the perfect alternative to a hotel room, each with a kitchenette. The one and two bedroom apartments are ideal for families, colleagues or larger groups looking for a home away from home experience with full kitchens and laundry facilities.

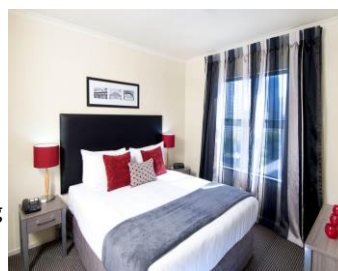


Rates (per room): (Minimum Stay: 1 night) Continental Breakfast pack* & Gym access included

	Capacity	01/07/17 – 31/06/18		
		1 - 6 Nights	7 - 27 Nights	28 - 83 Nights
Studio Apartment	1 - 2	\$172/night	\$165/night	\$159/night
One Bedroom Apartment	1 - 2	\$199/night	\$185/night	\$175/night
Two Bedroom Apartment	1 - 4	\$295/night	\$275/night	\$265/night

Facilities:

- Full kitchen includes oven, stove, kettle, toaster, microwave, fridge and dishwasher
- Onsite Parking - \$20
- *Cooked breakfast is also available for \$22.50 pp/morning
- Onsite restaurant, evening room service,
- LCD TV with SKY channels
- Desk with chair
- Bathroom with shower, hair dryer & towels
- Laundry facilities with washing machine & dryer, iron and ironing board
- Complimentary Gym Access "City fitness"



Other Information:

Cleaning	Daily or weekly service including linen change
Wi-Fi Internet	Various plans: from 500mb \$4.95 to unlimited \$74.95
Cancellation	1 week notice for cancellation, any cancellations made within 1 week will be charged a cancellation fee, Quest Auckland reserves the right to change the rate if the length of stay falls into a different rate category.
Damage	Any damage caused by guests will be charged at the time of check-out
Breakfast	Continental breakfast pack included, ask at reception. Cooked breakfast available for \$22.50.
Reception hours	24/7. Check-in 2pm. Check-out 10am.
Black Out dates	These prices do not apply during blackout dates. Black Out Dates confirmed at time of reservations

- All information is valid from 1 July 2017 to 31 June 2018. Please note that, as this information concerns external parties to NZLC Auckland, prices and conditions may change without notice.
- These rates are only valid until 31 June 2018, when they will be updated for correct rates,
- All bookings are subject to availability.
- Above rates include water, power and GST

Standard Option – Empire Apartments

Empire Apartments, is a popular student accommodation, it is centrally located amongst universities, shops and entertainment venues of Auckland. Empire is a modern, Practical and tastefully designed student accommodation within a short walk to Queen Street, 20 minute walk to NZLC. Empire offers self-contained studios and three bedroom shared accommodation, complete with a basic kitchenette, lounge/dining area and bathrooms.



Rates (per room): (Minimum Stay: 1 week)

	Capacity	1 – 4 weeks	4+ weeks
Standard Studio	1 or 2	\$91/night	\$490/week (Additional night is \$70)



Facilities Studio Accommodation:

- Double Bed/Twin beds with bathroom and Kitchenette.
- Perfect for 1 or 2 people
- Kitchenette includes stove, kettle, toaster, microwave, and fridge.
- Direct dial telephone / High speed internet available at an extra cost.
- Heater in the room
- Weekly cleaning service for kitchen, bathroom and living area
- Utensil package (water glass, mug, bowl, plate, cutlery) and Linen package (bed sheet, pillow case, duvet, duvet cover) are available from the reception



Other Information:

Bond (Check-In Time)	4+ weeks – Bond of \$500 (\$300 refunded at end of stay) / 6+ Months – Bond of \$900 (\$700 refunded at end of stay). Photo ID and credit card required.
Cleaning	Students need to clean private room. Sheet and pillow case replacement is available at reception weekly.
Wi-Fi Internet	2GB \$10 / 6GB \$20 / 10GB \$30 / 25GB \$40 (valid for 1 week)
Cancellation	48 hours' notice must be given for cancellations. Amendment of bookings are permitted providing at least 2 weeks' notice is given. Empire reserves the right to change the rate if the length of stay falls into a different rate category.
Damage	Any damage caused by guests will be charged at the time of check-out
Final Cleaning	\$100 Included in the Bond paid at check in.
Reception hours	8am to 11pm, Check-in 2pm. Check-out 10am.
Black Out dates	Empire reserves the right to have blackout dates with alternate pricing. These will be advised at time of booking.

- All information is valid from 1 July 2017 – 31 December 2017. Please note that, as this information concerns external parties to NZLC Auckland, prices and conditions may change without notice.
- All bookings are subject to availability.
- Above rates include water, power and GST

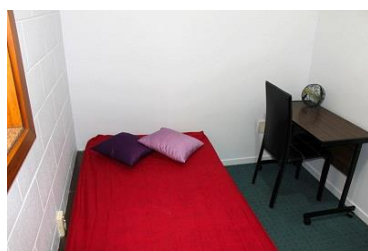
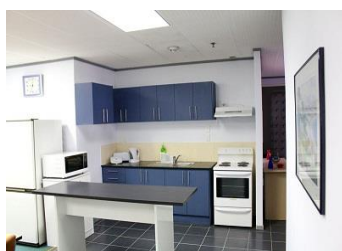
Standard Option – Luau Accommodation

Luau Accommodation is a great option known among international students in Auckland. Luciana and Aurelio (owners) take special care about the welfare of students, cleanliness and proper functioning of the structure of the accommodation. A major advantage of this accommodation is a friendly environment with students from different parts of the world. Luau accommodation has 3 apartments located right in the heart of the city 5 minutes' walk from the school. When you request a place you may be placed at one of the three apartments, this will be advised on your confirmation letter.

Luau City I (apt 2B) is a flat with 8 bedrooms, 3 bathrooms.

Luau City II (apt 7B) is a flat with 7 bedrooms, 3 bathrooms.

Luau City III (Princes Wharf) is a flat with 3 bedrooms, 2 bathrooms.



Rates: (Minimum Stay: 1 week)

			Weekly
Private Room	1 single bed in a shared room, up to 2 people per room	1 person rate	\$220/week (Additional night is \$40)
Standard Twin	2 single beds or 1 double bed, private room,	2 people rate	\$440/week (Additional night is \$40)
Standard Triple	1 single bed in a shared room, up to 3 people per room	1 person rate	\$200/week (Additional night is \$40)
Standard Quad	1 single bed in a shared room, up to 4 people per room	1 person rate	\$190.00 per week (Additional night is \$40)

Facilities Shared Accommodation:

- 1 lockable private or shared bedroom.
- Shared kitchen includes oven, stove, kettle, toaster, microwave, and fridge.
- Coined washing machines in each apartment: \$4 to Wash, \$4 to Dry
- Shared Lounge/Dining area including couches and table.
- Sky TV and 2 Computers available 24/7 in the living room,
- High speed internet available at an extra cost.

Other Information:

Bond (Check-In Time)	\$150.00 – refundable to be paid at the time of check in. Photo ID and credit card required.
Cleaning	Weekly service of shared areas, Students need to clean private room.
Wi-Fi Internet	2GB \$10 / 6GB \$20 / 10GB \$30 / 25GB \$40 (valid for 1 week)
Cancellation	Four weeks' notice of cancellation or a penalty fee will apply. Three weeks' notice - 1 week's penalty, two weeks' notice - 2 weeks' penalty, 1 one weeks' notice - 4 weeks' penalty. 2 weeks' notice to shorten stay once in accommodation.
Damage	Any damage caused by guests will be charged at the time of check-out
Final Cleaning	\$100 Included in the Bond paid at check in.
Reception hours	8am to 11pm, Check-in 2pm. Check-out 10am.

- All information is valid from 1 July 2017 – 31 December 2017. Please note that, as this information concerns external parties to NZLC Auckland, prices and conditions may change without notice.
- All bookings are subject to availability.
- Above rates include water, power and GST

Standard Option – YMCA Hostel Apartments

YMCA Hostel is a good option if you are looking for an affordable place where you can meet a lot of people while having the privacy of your own room in clean and comfortable facilities. Relax in the dining room, lounge and courtyard while enjoying a snack, hot drink, internet access and a game of pool or two! It is a 15 minute walk from NZLC Auckland and also very easy access to Queen Street, Ponsonby, cafés and restaurants.

Facilities:

- Wireless Internet / Fax and photocopying
- Shared laundry and kitchenettes
- Dining Room / Outdoor seating area
- Television recreation room with SKY television / mini library
- Pool, Ping Pong and Foosball tables available at no extra cost
- Ongoing social activities and a selection of games and books for guest use
- Shared bathrooms and showers



Within the same building you will also find a health and fitness club, stadium, and group fitness classes. Enquire at reception for more information.

Each room contains:

- A study desk and chair
- Full set of linen and duvet
- Students can rent heater from reception
- A wardrobe and a bar fridge
- A single bed (single option) or double / twin bed (double twin option)



Rates (per person): (Minimum Stay: 1 week)

	Capacity	Weekly
Single Room	1	\$335/week (additional 1-5 night/s \$67)
Double/Twin room	2	\$493/week (additional 1-5 night/s \$94)

Other Information:

Security Deposit	\$50 refundable registration fee for a stay of 8 weeks or more \$150 refundable bond for a stay of 8 weeks or more Any damage made to YMCA Auckland Hostel will be charged to students directly
Housekeeping	Housekeeping is provided weekly. Extra room service cleaning can be provided on request at the cost of \$25 each time. Payment needs to be made to YMCA directly by students.
Cancellation	Students leaving prior to 1 week (minimum stay) are not entitled to a refund. Five days' notice is required for early departures after 1 week stay.
Other Fees	Wireless available from \$3 (200mb/5 days), \$6 (500mb/14 days), \$10 (1GB / 31 days), \$24 (3GB/31 days), \$30 (4GB/31 days) \$50 (20GB/31 days) Washing tokens available at \$3 each and laundry powder \$1 each Entry to the fitness centre is \$10 per day
Reception hours	24/7. Check-in after 1.00 p.m. Check-out 10 a.m. If you plan to arrive after hours you must inform us on making your booking.
Black Out dates	YMCA reserves the right to have blackout dates with alternate pricing. These will be advised at time of booking.

- All information is valid from 1 January 2018 - 31 December 2018. Please note that, as this information concerns external parties to NZLC Auckland, prices and conditions may change without notice.
- All bookings are subject to availability.
- Above rates include water, power, weekly housekeeping and GST.

Standard Option – Haka Lodge

Haka Lodge is a upmarket “flashpackers” located on K’Road, in Auckland’s central business district, a 15 minute walk to NZLC or a short ride on the Link Bus. K road is right in the middle of party central, however this “flashpackers” offers a quiet space to stay and study, perfect for mature students.

Haka Lodge has a large communal kitchen & lounge area, spacious bathrooms, and cosy bedrooms. Our bunk beds are amazing and already have a reputation for being comfortable, private and unique – they are wooden beds that each have their own power point, reading light, privacy curtain and large under-bed storage lockers.



Rates (Minimum Stay: 1 night):

		01/09/2017 – 30/04/2018	01/05/2018 – 31/08/2018	01/09/2018 – 31/03/2019
5 Bed Dorm	1 person rate	\$259/week (Additional night is \$37)	\$238/week (Additional night is \$34)	\$259/week (Additional night is \$37)
7 Bed Dorm	1 person rate	\$238/week (Additional night is \$34)	\$224/week (Additional night is \$32)	\$238/week (Additional night is \$34)
Twin / Double Room	1 - 2 per room	\$637/week (Additional night is \$91)	\$602/week (Additional night is \$86)	\$637/week (Additional night is \$91)
Twin / Double Room W Ensuite	1 - 2 per room	\$826/week (Additional night is \$118)	\$700/week (Additional night is \$100)	\$826/week (Additional night is \$118)
Double W Twin Bunk W Ensuite	1 - 4 per room	\$1,015/week (Additional night is \$145)	\$889/week (Additional night is \$127)	\$1,015/week (Additional night is \$145)



Facilities:

- Wireless internet included in rate
- Shared laundry and kitchen / lounge
- Book exchange facility
- Television recreation room with Freeview television
- Shared bathrooms and showers
- Dorm rooms – lockers

Other Information:

Check In / Out	Check in 2pm – 11pm, Check out is 10am. Valid ID required at check in.
Housekeeping	Towel hire available for \$2 (private rooms free of charge). Sheet change available free of charge upon request (weekly) – please inform reception the day before you require this. Laundry facilities – 1pm-8am daily. \$6 total, laundry powder available for purchase from reception.
Cancellation	1 week cancellation policy, if cancellations or modifications made within 1 week a penalty fee of one night casual rate will be charged.
Other Fees	Proof of address - \$5 Printing / Photocopying – from \$0.50 Padlock for storage lockers - \$5
Reception hours	8am-11pm. Check-in after 2.00 p.m. Check-out 10 a.m. If you plan to arrive after hours you must inform us on making your booking.
Black Out dates	Haka Lodge reserves the right to have blackout dates with alternate pricing. These will be advised at time of booking.

- All information is valid from 1 January 2018 - 31 December 2018. Please note that, as this information concerns external parties to NZLC Auckland, prices and conditions may change without notice.
- All bookings are subject to availability. / Above rates include water, power, weekly housekeeping and GST.

Budget Option – YWCA Auckland Hostel

Located in the centre of Auckland City, close to shops and entertainment venues, **YWCA Auckland Hostel** is a 15 minute walk from NZLC Auckland. 75% of residents are international students. This budget hostel is a good and safe option if you are looking to meet a lot of people while having the privacy of your own room.

These rates are not confirmed until November 2017. YWCA reserves the right to amend the rates in accordance with 2018 rate schedule due out in December 2017 and all confirmed bookings for the 2018 period will be amended and re-invoiced to show the correct rates.

Rates: (Minimum Stay: 1 night)

	capacity	Less than 1 week stay: 1 – 6 Days	1 – 8 weeks	8 Weeks +
Single	1	\$80/night	\$329/week (Additional night is \$47)	\$224/week (Additional night is \$32)
North Tower Single	1	\$85/night	\$352/week (Additional night is \$50)	\$239/week (Additional night is \$34)
6th Floor Single	1	\$87/night	\$357/week (Additional night is \$51)	\$243/week (Additional night is \$35)
Single Deluxe	1	\$90/night	\$376/week (Additional night is \$54)	\$251/week (Additional night is \$36)
Double / Twin	1-2	\$96/night	\$401/week (Additional night is \$58)	\$314/week (Additional night is \$44)
Double ensuite	1-2	\$108/night	\$456/week (Additional night is \$65)	\$353/week (Additional night is \$50)

Facilities:

- Ground floor - kitchen, TV room/lounge, and court yard. Each floor has a shared bathroom and laundry.
- No alcohol policy. CCTV coverage 24 hours a day.
- Levels 1, 2 and 6 - mixed gender floors.
- Levels 3, 4 and 5 - female only floors (men are only allowed during visiting hours (8am to 11pm) and must report to reception).
- Each room has a wardrobe, study desk, set of drawers, mini fridge, and heating. Sheets, pillowcases, and duvets will be provided.
- Long term stays will need to provide their own cooking utensils.



Security Deposit	\$60 (\$120 for 6 th floor) key deposit at the time of check in. Any damage made to YWCA will be charged to students directly.
Housekeeping	Vacuum cleaners and cleaning products are available from the reception. Linen change: Wednesday only at the reception from 7 – 9am and 6 – 10pm (White ones only) 1 week or longer stay. Clean the room and fridge before checkout.
Cancellation	48 hours' notice must be given for cancellations. Amendment of bookings are permitted providing at least 2 weeks' notice is given. YWCA reserves the right to change the rate if the length of stay falls into a different rate category.
Other Fees	Laundry \$2/cycle. Internet – 1 day or 500mb \$5 / 7 days or 2 Gb \$12 / 30 days or 10gb \$30 / 30 days or 51gb \$62 / 31 days or 100gb \$89
Reception hours	8am – 10pm. Check-in 11am. Check-out 9am. If you plan to arrive after hours you must inform us on making your booking.
Black Out dates	YWCA reserves the right to have blackout dates with alternate pricing. These will be advised at time of booking.

- These rates are not confirmed until November 2017. YWCA reserves the right to amend the rates in accordance with 2018 rate schedule due out in December 2017 and all confirmed bookings for the 2018 period will be amended to show the correct rates
- All bookings are subject to availability. If a booking is extended in to a new price category the new rate will only apply from date of confirmation of extension.
- Above rates include water, power and GST.