

The Emerald Cultural Institute is a school recognised by the Irish Department of Education and Skills for the Teaching of English as a Foreign Language.

Certified by the New York State Education Department.

**Central Bookings Office:** Emerald Cultural Institute, 10 Palmerston Park, Rathgar, Dublin 6, Ireland. **t** +353 1 4973361 **f** +353 1 4975008 **e** emerald@eci.ie

#### Dublin

Emerald Cultural Institute  
10 Palmerston Park  
Rathgar, Dublin 6, Ireland  
**e** emerald@eci.ie  
www.eci.ie

#### New York

Emerald New York  
40 Exchange Place, Suite 700  
New York, NY 10005  
**e** emerald@eci.ie  
www.eci.ie

#### Taipei

Taiwan Representative Office  
No.236, Dade Rd.  
Sanxia Dist.  
New Taipei City 23741  
Taiwan (R.O.C.)  
**e** cariyu.emerald@gmail.com



# YOUR NEEDS



# OUR EXPERIENCE



**In today's fast-paced and rapidly-changing world, effective communication is more important than ever, and English as a means of international communication is key. International Education has become a permanent and ever-growing feature of modern society and today traditional English-language programmes form only part of a complex range of study-abroad programmes required by groups and individuals as a way of achieving personal, educational or professional goals. Mobility involving cultural exchanges among countries worldwide has become an integral part of professional development in a way that could not have been imagined a few years ago.**

The Emerald Cultural Institute has had over twenty-five years of experience in providing quality language, professional development and cultural programmes to groups and individuals of all ages and from more than 50 countries worldwide. As learners' needs changed, we developed a sophisticated range of courses to meet those needs; academic year programmes, university pathway and examination preparation courses, tailor-made specialised programmes for groups and individuals, blended learning and in-service courses for teachers, training through English.

We bring energy and enthusiasm in responding to the new reality that is international education today and to developing suitable programmes across a broad spectrum. We also provide expert training in a variety of different locations so that clients can choose the type of programme and the location that best meets their unique needs. We remain committed to an ongoing evaluation of what we do in response to the constantly-evolving world of international education, without ever losing sight of the fact that it is the individual learner who is at the centre of what we provide.

Learning a language offers a new perspective on the world and on life and we are proud to be part of that experience.

# CONTENTS

**7**

**Ireland**

**7**

**Dublin**

**9**

**Palmerston Park**

**10**

**Dublin Summer  
Centres**

**13**

**Sligo**

**15**

**USA**

**15**

**New York**

**16**

**Wagner College**

**18**

**Xaverian High School**

**19**

**Washington**

**20**

**Adult Courses**

**22**

**General Course  
Information**

**24**

**Intensive Course**

**28**

**Intensive Plus  
Courses**

**31**

**Examination  
Courses**

**34**

**Academic Year  
Programme**

**36**

**University  
Pathways  
Programmes**

**40**

**Internship  
Programme**

**48**

**High School  
Programme**

**59**

**English Plus  
Horseriding**

**41**

**Specialised and  
Business Courses**

**50**

**Mini-Stay  
Programme**

**59**

**English Plus Golf**

**43**

**Courses for Non-Native  
Teachers of English**

**52**

**Junior Summer  
Programmes**

**60**

**Accommodation**

**45**

**E-learning**

**54**

**Multi-Activity  
Programme**

**46**

**Junior  
Programmes**

**56**

**Milan Camp**

**62**

**General  
Information**

**58**

**English Plus Tennis**

**DUBLIN –  
WELCOMING  
CITY OF  
LITERATURE  
AND MUSIC**



## Dublin

**Dublin, the capital city of Ireland, has a rich and varied history spanning more than a thousand years. This lively and bustling city has plenty to offer visitors by way of culture, visitor attractions and entertainment.**

**Students participating in our social programme have the opportunity to explore Dublin and learn more about our rich heritage in history, music and literature. The city's excellent museums, galleries and attractions provide visitors with opportunities to experience first-hand our Irish culture and history.**

Dublin is proud of its many theatres and has strong literary and musical traditions. It prides itself on being a musical city, which has produced such famous acts as U2 and the Dubliners. Across the city our world famous pubs are an important part of our culture providing students with excellent opportunities to enjoy our traditional Irish music and dancing.

With excellent transport links by train or bus, Dublin is a perfect base from which to explore the renowned scenic areas of Galway, Cork, Kerry and Sligo.

**Dublin's Top Visitor Attractions include:**  
**Dublinia and Christchurch Cathedral /**  
**Trinity College and the Book of Kells /**  
**National Museums and Gallery /**  
**Chester Beatty Library /**  
**Guinness Hopstore / Dublin Castle**









## Palmerston Park

Our headquarters are located at No. 10 Palmerston Park, a prime residential district within easy reach of Dublin City centre. Set in its own gardens, and overlooking the beautiful Palmerston Park, it offers students the chance to study English in a peaceful and stress-free environment with the city centre a 6-minute tram journey away. The original school building is a gracious Victorian mansion and we have enriched the campus by adding a specially designed modern building with additional classrooms and a large serviced canteen.

Our Palmerston School Facilities include:

**Twenty-four classrooms**

**Language Laboratory**

**Multi-media centre**

**Self-Access Library**

**Internet and E-mail Facilities**

**Wi-Fi**

**Reading room and Study Space**

**Private Landscaped Garden**

**Large Serviced Canteen**



## Dublin Summer Centres

During summer months, programmes are held in our year-round school and in a variety of other suitable locations. For junior students attending a summer programme, our summer centres are modern complexes set in their own extensive grounds. All centres are located in quiet well-established residential areas, yet are within easy reach of Dublin city centre by bus and tram.

### Junior Summer Centre Facilities

- Bright and spacious buildings with excellent classroom facilities
- Extensive playing fields and sports facilities for recreational activities
- Large indoor hall for sports and evening activities
- Situated in mature residential areas. Host families are either walking distance or a short bus/tram journey to the schools.
- Hot lunch options available in all summer centres with a wide range of hot and cold food freshly prepared daily.

### Junior Centres with Host Family Accommodation

- St. Raphaela's School, Upper Kilmacud Rd., Stillorgan, Co Dublin
- Notre Dame School, Upper Churchtown Road, Dublin 14
- Sandford Park School, Sandford Road, Ranelagh, Dublin 6

### Dublin Residential Centres

We have a number of adult and junior residential centres available during the summer. Students joining a residential course may attend class on campus. Our residential courses are held in Marino Institute of Education, Griffith College, St Raphaela's and IMI Residence.

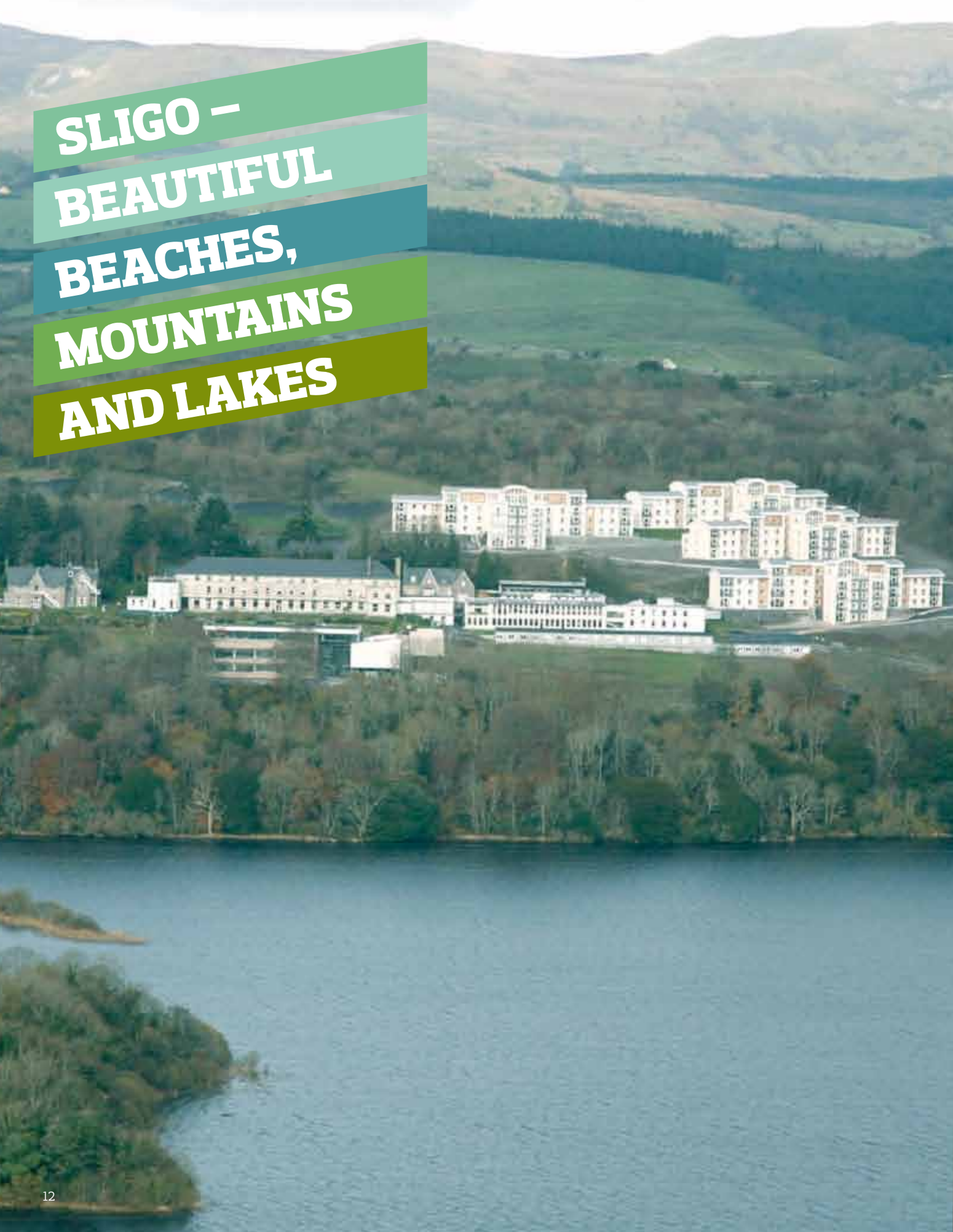




**Extensive playing fields and sports facilities for recreational activities**



**SLIGO –  
BEAUTIFUL  
BEACHES,  
MOUNTAINS  
AND LAKES**





## Sligo – West of Ireland

**Located in the west of the country, Sligo is one of the most picturesque counties in Ireland. With stunning scenery, beautiful beaches and the striking Atlantic coastline, this location provides students with opportunities to participate in a diverse range of outdoor activities including kayaking, horse-riding, canoeing and surfing.**

Sligo is a friendly and welcoming place for students and the beautiful town has many visitor attractions and historical monuments. Traditional music is an important part of the lively social scene in Sligo. At the weekends students can explore other parts of Ireland with one-day trips organised to Dublin, Galway, Mayo or the Aran Islands.

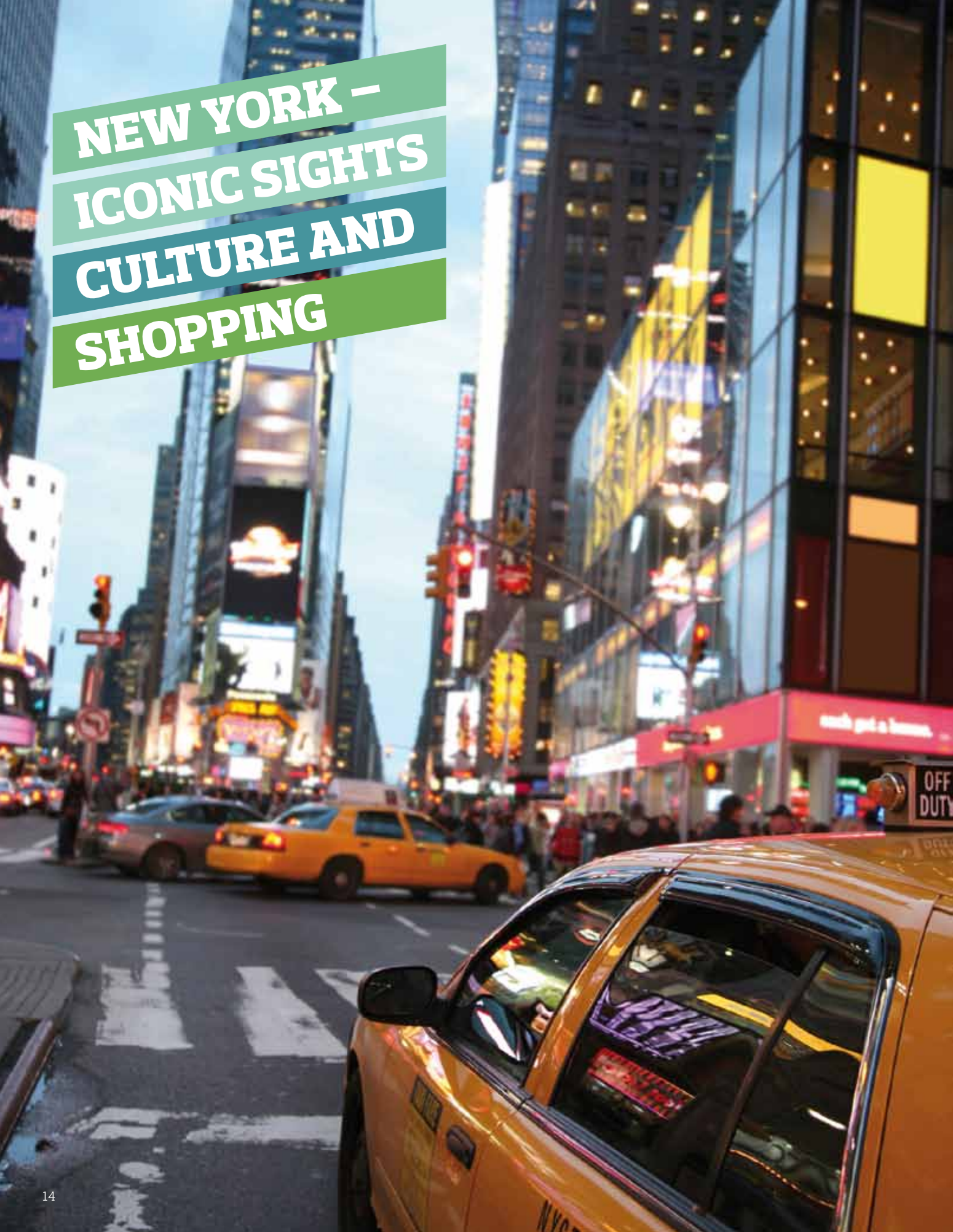
Summer programmes in Sligo are run in **The Innisfree International College and Convention Centre**, a beautiful campus overlooking the scenic lake of Lough Gill. Students can enjoy truly spacious apartments fitted out to the highest standard and features of the campus include:

- 3 and 4 bedroom apartments all ensuite – 221 rooms.
- Swipe card access control to all blocks, apartments and bedrooms.
- Fully furnished, including study desks and chairs, sofas and TVs.
- Fitted kitchens complete with cutlery, utensils, etc.
- WiFi access included in the bedrooms for students who bring their own laptops.
- On-site facilities including state-of-the-art college classrooms, indoor gym, outdoor sports and recreation facilities, and laundry and convenience store.

**Sligo is an ideal location for students who want to experience outdoor adventures.**



**NEW YORK –  
ICONIC SIGHTS  
CULTURE AND  
SHOPPING**



## New York

# 15 USA

**With a skyline that's recognizable worldwide and more than 8.3 million people from all corners of the globe who call it home, New York City is a unique place. From world-class dining to shopping to culture, New York City's streets pulsate with an unmistakable rhythm that attracts more than 45 million visitors annually.**

- Students have the opportunity to visit a number of iconic sights. **The Empire State Building, Central Park, the Top of the Rock** Observation Deck and the **Statue of Liberty**—to name just a few—never fail to dazzle, while strolling around **Times Square, Wall Street, Chinatown, Little Italy, and Greenwich Village** offers a window into the City's past and cultural character.
- Experience New York City's countless cultural offerings, including such world-class museums as the **Museum of Modern Art**, the **Metropolitan Museum of Art** and the **Solomon R. Guggenheim Museum**.
- New York City is also a shopper's paradise, with its chic flagship stores on Fifth and Madison Avenues attracting shoppers from around the world.

**Experience New York City's  
countless cultural offerings:  
Museum of Modern Art  
Metropolitan Museum of Art  
Solomon R. Guggenheim Museum.**





## Wagner College

Located on a picturesque Staten Island hilltop, the Wagner campus is noted for its beauty and tranquillity. The campus retains the feeling of a turn-of-the-century oasis with original stately buildings and a magnificent view of Manhattan, the Atlantic Ocean and New York harbour.

Staten Island offers a small town feeling and easy access to Manhattan by means of the Staten Island Ferry, which carries commuters to and from the city free of charge. The ferry ride offers visitors unforgettable views of the Verrazano Bridge, Statue of Liberty, Ellis Island and lower Manhattan skyline.







Facilities of the campus include:

- Beautifully landscaped 105-acre wooded grounds
- On-campus accommodation with spectacular views
- Excellent classroom and study facilities
- State-of-the-art sports facilities including a gymnasium and fitness centre, swimming pool, basketball stadium, aerobic and dance Studio
- All-you-can-eat student cafeteria with menus designed to ensure that there's something for everyone
- General Convenience Store providing food and provisions throughout the day. Supervision and monitoring by 24-hour security desks and campus patrols
- High-speed internet and e-mail connections for students who bring their own laptops
- Library with computers



**Located on a picturesque Staten  
Island hilltop, the Wagner  
campus is noted for its beauty  
and tranquility**



**Bay Ridge is a beautiful Brooklyn neighborhood overlooking the Hudson River, lower New York harbour and the Verrazano Narrows**

### **Xaverian High School**

Bay Ridge is a beautiful Brooklyn neighbourhood overlooking the Hudson River, lower New York harbour and the Verrazano Narrows. Often referred to as "Brooklyn's Gold Coast", it is a lively and bustling area with a strong family presence and international flavour.

Located within easy reach of Manhattan, the neighbourhood offers a number of popular and cultural attractions such as the Harbor Defense Museum, and the beautiful 69<sup>th</sup> Street Pier and Owl's Head Park.

During the summer classes are held at Xaverian High School, a prestigious private school and one of New York City's leading college-preparatory schools. The state-of-the-art campus is conveniently located close to students' host family accommodation and provides an excellent study environment for our students.



## Washington

Students spending a high school year in Washington DC can be part of this vibrant and lively city. Students are accommodated with host families conveniently located to their chosen high school and the experience of living with a family helps students to integrate fully into the American way of life.

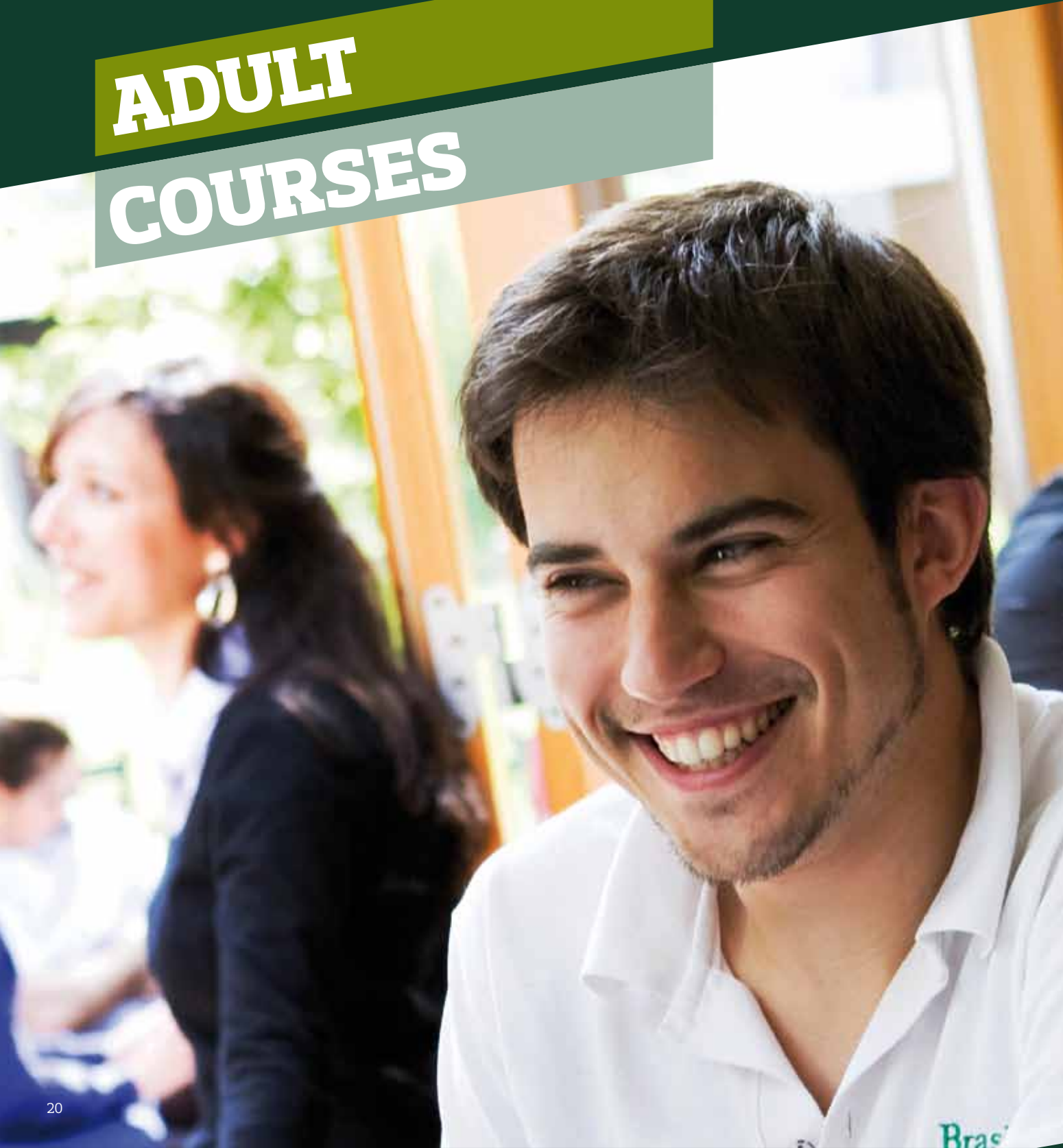
Our High School programmes are offered in a number of prestigious schools in Washington including:

- St. Anselm's Abbey School
- Georgetown Preparatory School
- The Avalon School
- Edmund Burke School
- St. Albans School
- Brookewood School

**Top Visitor attractions in Washington DC include: Capitol Hill / the White House / the Smithsonian / the National Gallery / the National Geographic Museum / the National Mall**



# ADULT COURSES





# 22

## General Course Information

## General Course Information

**Our General Courses focus on improving students' fluency and accuracy in English and are designed to provide a thorough knowledge of general English at all levels. Our Intensive Programmes cater for students at all levels, from elementary to advanced. Absolute beginners can take advantage of our specially designed courses, which start on specific dates throughout the year.**

### Key Features of all our General Courses

**Written and Oral Placement test:** Students are given a written and oral test on the first day of their course and placed in a class appropriate to their level of English. This allows our teachers to speak with each student individually and decide on the best class for him or her.

**Course Materials:** The materials used in class are interesting and stimulating. We use the most up-to-date textbooks and our teachers draw on a wide range of authentic supplementary materials from a variety of sources including newspapers, magazines, DVDs, CDs, and the Internet.

**General Course fees include: 60-minute lessons, teaching materials (excluding textbooks), diploma, a social and cultural programme, welcome kit, use of multi-media facilities, Wi-Fi access.**

### Ongoing Support and Monitoring:

Students' progress is monitored on an ongoing basis by our Director of Studies and class teachers, who adjust class levels accordingly.

### E-learning support throughout the programme:

Extra learning programmes are available with personal attention from our in-house Language Technician.

**Social Programme:** Students are entitled to join our complimentary programme which includes a daily movie, a free cultural activity once per week and access to local sports clubs at reduced rates. Optional afternoon, evening and weekend excursions are also offered at an additional cost.

**Your Study Path:**

**Level (Common European Framework Reference)**

**CEFR C1 - C2**

**CEFR C1 Pre Advanced - Advanced**

**CEFR B2 Upper Intermediate**

**CEFR B1 Intermediate**

**CEFR A2 Pre Intermediate**

**CEFR A1 Elementary**

**Weeks**

**Exams**

12-16	CPE/ IELTS/ 7.0-7.5	TOEFL/ iBT 100-110	TIE
12-16	CAE/ IELTS/ 6.5-7.0	TOEFL/ iBT 80-90	TOEIC/ TIE 701-910
12-16	FCE/ IELTS/ 5.5-6.0	TOEFL/ iBT 60-70	TOEIC/ TIE 541-700
12	PET/ IELTS/ 4.5-5.0	TOEFL/ iBT 40-50	TOEIC/ TIE 381-540
14	KET/ TOEIC 246-380		
12			

**Students' progress is dependent on a number of factors including attendance, ability and the type of programme.**  
**\*Beginners' courses start on specific dates throughout the year.**

**Find out more...**  
 Page 24 and 25 for details on our intensive and combined courses



---

**Intensive Course**

---

**GEN1**

---

20 hours of group tuition per week

---

9.00-11.00 and 11.15-1.15 daily  
Monday to Friday

---

Maximum class size 14 students  
(Average 9)

---

Minimum duration 2 weeks

---

For students aged 18 and over

---

Starts every Monday

---

All levels from Beginner \* to Advanced

---

\*Fixed dates for complete beginners

---

**Location: Dublin**

---

## Intensive Course

**The Intensive Course covers the four basic skills of listening, speaking, reading and writing and is specially programmed to improve communication skills in spoken and written English.**

Classes are held in the mornings and the timetable for our Intensive Course is ideal for students who want free time to join in our social programme, spend time with their friends or work on a part-time basis. Students who want to do private study in the afternoons can avail of the help of our tutors in the language laboratory or use the multi-media facilities.

In addition to the Intensive Course held in the morning Emerald offers a wide range of opportunities for the student to improve their language skills in a variety of different afternoon programmes.

**The Intensive Course  
is specially programmed  
to improve communication  
skills in spoken and  
written English**





## Combined Course

Students participating in our Combined Course (GEN2) follow the morning programme of the Intensive Course with an additional five hours of individual tuition. This course has the advantage of combining the possibility of working in a group with personal tuition in the afternoon, allowing participants to concentrate on specific areas of language development and work on a one-to-one basis with their teacher in order to achieve maximum progress. The afternoon timetable can be flexible by arrangement with the teacher, to allow students to participate in the social and cultural programme offered by the school.

## Individual Tuition

This course is tailor-made to suit the individual needs of any student who wishes to work on specific areas of language development. Students who choose this course can work with as many as three different teachers a day, focusing on specific points in each lesson. The course programme may be agreed in advance of the course or with the course tutor on the first day.

### Combined Course

#### GEN2

20 hours of group tuition plus 5 hours of one-to-one tuition in the afternoons

9.00-11.00 and 11.15-1.15 daily Monday to Friday + one hour each afternoon

Maximum class size 14 students (Average 9)

Minimum duration 2 weeks

For students aged 18 and over

Starts every Monday

All levels from beginner\* to advanced

\*Fixed dates for complete beginners

**Location: Dublin**

### Individual Tuition

#### GEN3

Up to 8 hours a day of private tuition

Flexible timetable

Minimum duration 1 week

For students aged 18 and over

Available all year round

All levels from beginners to advanced.

**Location: Dublin, Sligo, New York**

**Find out more...**

Pages 28 to 33  
for details of our  
Intensive Plus  
options





**At the Emerald Cultural Institute  
the social and cultural component  
of the programme is as important  
as the academic one in terms of  
personal development and of  
language acquisition.**





## Intensive Plus Courses

**The Intensive Plus Courses are designed for students who wish to supplement their General English Course with additional afternoon classes in small groups. Students attending our Intensive Plus programmes follow the morning timetable for our General Courses with six additional hours per week in the afternoons.**

**Intensive Plus Courses** are ideal for students who want more exposure to the English language and more time with our expert teachers.

**Innovative and focused materials:** The materials for the different afternoon modules are carefully researched and specially selected for each programme.

---

### Intensive Plus Conversation

---

#### GEN4

20 hours of group tuition a week plus 6 hours of conversation classes in the afternoons

9.00–11.00 and 11.15–1.15 daily Monday to Friday

Maximum class size 14 students in the morning lessons (average 9)

14.15–16.15 daily Tuesday to Thursday

Maximum class size 8 students in the afternoon lessons

Minimum duration 2 weeks

For students aged 18 and over

Starts every Monday

Available at three levels starting from pre-intermediate

**Location: Dublin**

---

## Intensive Plus Conversation

This course is designed to improve fluency in English. It allows students to develop their language skills in the morning lessons and put them into practice in the afternoon. The afternoon conversation classes are available at three levels, starting from pre-intermediate and cover a wide range of topics of discussion. The classes are smaller than in the morning courses, helping to generate meaningful discussion within the group. Teachers concentrate on vocabulary and idiomatic language, leading to more natural English speech.



## Intensive Plus Business

The Business English course combines morning lessons in general English with afternoon lessons focusing specifically on developing language skills within the context of the world of business. Topics covered include the language of meetings, negotiations and presentations, concepts involved in marketing, sales and advertising and techniques for telephoning and e-communication. The smaller afternoon groups allow for more interaction and more realistic scenarios.

Intensive plus Conversation / Intensive plus Examination Preparation / Intensive plus Business Intensive Plus English for Academic Purposes

## Intensive Plus English for Academic Purposes

This course is specially designed to help students preparing to join an undergraduate or postgraduate programme in an English Speaking University. The programme, which is offered on fixed dates, provides participants who already have a good level of English with the additional techniques and skills needed for academic study through English. Significant instruction time is dedicated to developing academic English reading, writing, grammar, listening, speaking and vocabulary skills.

Topics covered include: Participating in tutorials and seminars; Academic listening and note-taking; Giving presentations; Academic Writing skills for essays and reports/ reviews; Examination Techniques; Academic reading skills and critical thinking.

### Intensive Plus Business Course

#### GEN7

20 hours of group tuition a week plus 6 hours of Business English tuition in the afternoons

9.00-11.00 and 11.15-1.15 daily Monday to Friday

Maximum class size 14 students in the morning lessons (average 9)

14.15-16.15 daily Tuesday to Thursday

Maximum class size 6 students in the afternoon lessons

Minimum duration 2 weeks

For students aged 21 and over with a good intermediate level of English and an academic or practical business background

Starts every Monday

**Location: Dublin**

### Intensive Plus English for Academic Purposes

#### GEN8

20 hours of group tuition a week plus 6 afternoon hours of English for Academic Purposes

9.00-11.00 and 11.15-1.15 daily Monday to Friday

Maximum class size 14 students in the morning lessons (average 9)

14.15-16.15 daily Tuesday to Thursday

Maximum class size 8 students in the afternoon lessons

Minimum duration 2 weeks

For students aged 18 and over with a least an upper-intermediate level

Available on fixed dates

**Location: Dublin**



**We have become specialists in preparing students for a wide range of internationally recognised exams, from the Cambridge ESOL Examinations to IELTS, TOEIC and TOEFL, TIE, and the London Chamber of Commerce Exam. Students attend either specialised morning group courses for the Cambridge examination or general morning courses with an additional six hours of exam-focused afternoon sessions with our experienced teachers for the IELTS and TOEFL examinations.**

## Recognised centres for TOEIC and TIE

The **TOEIC (Test of English for International Communication)** examination is one of the most widely recognised business examinations and is increasingly used by companies around the world to measure the ability of non-native speakers to use English in the workplace. We are an official TOEIC Examination centre and students attending any of our Intensive Courses can register to sit this examination in our Dublin campus. Students can use our specially designed TOEIC self-study materials in our tutor-monitored language laboratory or they can book individual lessons with a private tutor to work on their examination techniques.

The **Test of Interactive English (TIE)** is an international EFL exam developed in Ireland. This examination is suitable for junior and adult students on either short or long-term courses. TIE is a learner-centred exam which is flexible and is designed to recognise and accommodate the needs and interests of each learner whatever their level of English, age, cultural or educational background.

**Find out more...**  
Page 32 and 33 for details of our  
Cambridge and IELTS/TOEFL  
Examination courses



---

**Examination Course**

---

**GEN5**

---

20 hours of group tuition per week

9.00 –11.00 and 11.15–1.15 daily Monday to Friday

Additional preparation and practice sessions in the period leading up to the examination dates

Maximum class size 14 students (average 9)

For students aged 18 and over with a good intermediate level (B2) of English

Available on fixed dates. **Courses will only run with a minimum number of participants.**

The examination fees are not included in the course fee

**Location: Dublin**

---

## Cambridge Examination Course

Choosing an internationally recognised examination is an ideal way for students to certify their English Language level. Our Cambridge Examination Courses provide students with expert teachers who have a proven success record in preparing students for the First Certificate, Advanced or Proficiency Examinations.

Cambridge Examination Courses

**First Certificate in English (FCE), Certificate in Advanced English (CAE), Proficiency (CPE).**

Jan – March (10 weeks)

March – June (12 weeks)

July – August (6 weeks – FCE only)

September – December (12 weeks)

Cambridge Examination Dates

**First Certificate in English (FCE), Certificate in Advanced English (CAE), Proficiency (CPE).**

Mid March

Mid June

End of August (FCE only)

Mid December

## IELTS Examination Course

This programme is ideal for students who require an English language qualification to attend a university or college in Britain or Ireland. The course will focus on developing key techniques and strategies for the IELTS examination. Participants complete regular practice tests and are taught how to effectively deal with all sections of the test. Our Academic Team and our Director of Studies are available to assist you with the application process for the IELTS Examination.



## Intensive Plus Examination Preparation

Our Intensive plus Examination programmes are designed to help students achieve the best possible results in their chosen English exam. This course prepares students for the following internationally recognised examinations:

**TOEFL, the Test of English as a Foreign Language** is the most common requirement for American university and college entry

**IELTS, the International English Language Testing system** is required for admission to universities around the world and is an important English language qualification for access to universities and colleges in Britain and Ireland

The course content focuses on developing examination techniques in the four skills of writing, speaking, listening, and reading. Participants will complete regular practice tests and learn how to effectively answer all sections of the test.

---

### Intensive Plus Examination Preparation

---

#### GEN6

---

20 hours a week of General English plus 6 hours of exam-specific preparation classes in the afternoons

9.00–11.00 and 11.15–1.15 daily Monday to Friday

Maximum class size 14 students in the mornings (average 9)

14.15–16.15 daily Tuesday to Thursday

Maximum class size 8 students in the afternoons

For students aged 18 and over with at least a good intermediate level of English

The examination fees are not included in the course fees

Courses are held on fixed dates throughout the year

**Location: Dublin**

---



# Academic Year Programme

## Academic Year Programmes

### AYP1 / AYP2/ AYP3

Choice of 20 or 26-hour programmes or a combination of both

Minimum duration 25 weeks

For students aged 18 and over

Available for all levels from Pre-Intermediate to Advanced. Beginners' Course available on fixed dates only

Starting dates every Monday

Students of an appropriate language level may incorporate any of the afternoon options into their study programme including English Plus Conversation (GEN4) / Examination Preparation (GEN6) / Business English (GEN7) or English for Academic Purposes (GEN8)

Compatible with preparation for TOEIC, TOEFL, IELTS or the Cambridge exams. Examination options are available on fixed dates.

Examination fees are not included in the course fee

**Location: Dublin**

**This programme is designed for students who would like to undertake a long period of language study. It is available to all students, from elementary to advanced levels of English. Our Academic Year is ideal for students planning to enter third-level education or for students who want to develop their language skills for use in the workplace.**

Students who join us for an academic year can take advantage of a wide range of courses from General Intensive English to conversation classes, business English sessions, introduction to [English for Academic Purposes](#) or preparation for any of the main official English-language examinations. Students can also gain valuable career experience by combining their Academic Year programme with our [Internship Programme](#).

The Academic Year can be structured to suit each individual's requirements and the Director of Studies will design a suitable study path based on your level, needs and aims.

Students who do not meet the academic requirements for direct entry to undergraduate degrees should attend an International Foundation Programme. We are happy to assist students with applications and referrals to our partners who offer these programmes.

**Find out more...**

Page 36 and 37 for information  
Page 32 and 33 for information  
on our examination courses



## Sample Study Paths

Starting Level	Course Sample Structure				Target		
Elementary Pre-Intermediate	36 weeks <b>GEN 1</b> 20 hours	→	12 weeks <b>GEN 5</b> 20 hours	→	<b>Upper Intermediate</b> FCE Exam		
<b>AYP 1:</b> 48 weeks x 20 hours							
Intermediate	13 weeks <b>GEN 4</b> 26 hours	→	6 weeks <b>GEN 6</b> 26 hours	→	6 weeks <b>GEN 8</b> 26 hours	<b>Pre-Advanced</b> IELTS 5.5-6.0	
<b>AYP 2:</b> 25 weeks x 26 hours							
Intermediate	6 weeks <b>GEN 1</b> 20 hours	→	12 weeks <b>GEN 4</b> 26 hours	→	6 weeks <b>GEN 7</b> 26 hours	12 weeks <b>GEN 5</b> CAE prep 20 hours	<b>Advanced</b> CAE/IELTS 6.5
<b>AYP 3:</b> 18 weeks x 26 hours +18 weeks x 20 hours							

**Find out more...**  
 Page 29 for details of our English  
 for Academic Purposes  
 Page 40 for details of our  
 Internship Programme





## University Pathway Programmes

**More and more international students are choosing to continue their studies in an English-speaking university or college. The Emerald Cultural Institute provides a university pathway programme for students who have met the academic requirements for university or third level entry but do not have the required level of English.**

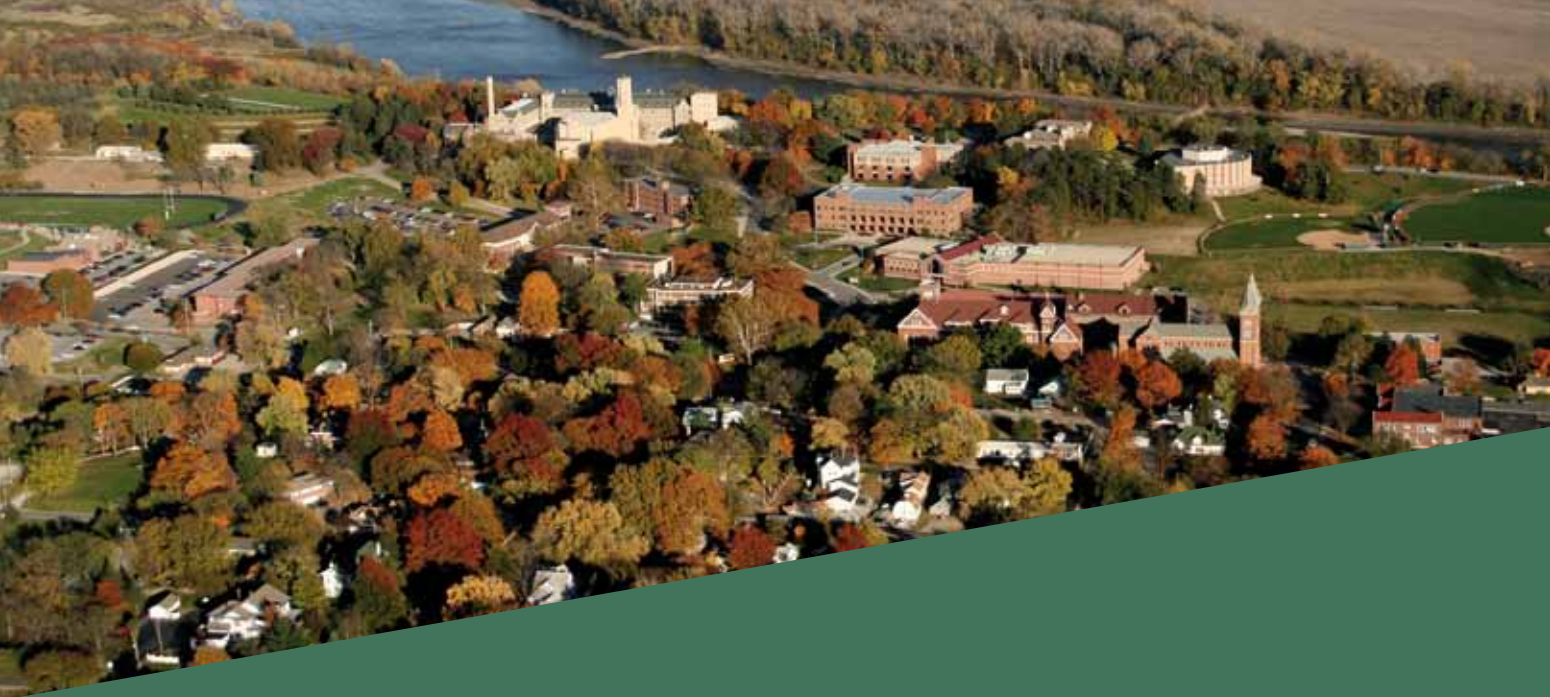
### University Partners

#### **Trinity College Dublin**

Established in 1592, the prestigious Trinity College is Ireland's oldest university and enjoys a worldwide reputation. The Emerald Cultural Institute is officially recognised by Trinity College to provide pre-course English Language instruction for international applicants who do not satisfy their English Language entry requirements.

#### **Wagner College, New York**

Founded in 1833 Wagner College offers students a blend of broad-based learning with real-world experience through a dynamic course of study. Wagner offers students a diverse range of majors with a commitment to a liberal arts education and an award-winning curriculum.



## University Partners

### **Dublin Institute of Technology**

The Dublin Institute of Technology was founded in 1887, and in recent years has played an important role in providing new education programmes to support the technical, business, health, science and social infrastructure of a constantly evolving knowledge economy.

### **National University of Ireland (NUI), Maynooth**

The National University of Ireland, Maynooth has enjoyed over two centuries of academic excellence with the current university formalised in 1997. Building on a tradition of scholarship and excellence in all aspects of its Teaching and Learning, NUI Maynooth is committed to being a first class research-led centre of learning and academic discovery. It is located on a spacious university campus in Ireland's only university town 20km west of Dublin.

### **Marino Institute of Education, Dublin**

Marino Institute of Education is a third level college, established in 1904. It offers a three-year undergraduate Bachelor of Education (B.Ed.) programme and an eighteen-month postgraduate Higher Diploma in Education (Primary), both awarded by the University of Dublin.

### **Benedictine College, Atchison, Kansas**

Named one of "America's Best Colleges" for 2010 by U.S. News and World Report, Benedictine College offers popular business majors and a wide range of undergraduate programmes. Students benefit from small classes, personal attention and opportunities to get to know American students.



---

**Choice of 20 or 26-hour programme**

---

Minimum 24 weeks to 48 weeks depending on the starting level of English

For students aged 17 and over

High School Diploma required for entry to University (other qualifications may be required for entry depending on the University or course selection)

For Entrance onto IELTS, TOEFL or Cambridge examination preparation classes or English for Academic Purposes a minimum language level of good intermediate or upper-intermediate is required

Flexible start dates

**Location: Dublin**

---

## University Pathway Programme

Our University Pathway Programme Service Includes:

- Advice and assistance from our Academic team in deciding on your course or university selection.
- Identifying the specific requirements and English-language level needed for your chosen course and advice on the most suitable examination to take.
- Assistance in completing college applications and putting together the necessary documentation.
- Organising Conditional Letters of Offer from our partner Universities or Colleges.
- Submission of documents and application forms in the specified time frames.
- Regular contact and follow-up on your applications with the International Office of the chosen University.

In addition to our wide range of general and intensive course options we offer the following specific course options for students participating in the University Pathway Programmes:

### **External English-Language Examinations: GEN5 and GEN6**

Students registering for IELTS, TOEFL or one of the Cambridge ESOL examinations will receive advice on the most suitable examination to take and will be able to attend specific examination preparation classes. These programmes focus on developing key techniques and strategies for academic success. Examination fees are not included in the course fees.

### **English For Academic Purposes: GEN8**

This course is ideal for students planning to enter university and helps students to develop the academic skills and techniques necessary for their time in an English-speaking University. The afternoon modules include sessions on note taking, giving presentations and developing academic writing for reports and essays.



We have agreements in place with prestigious universities in Ireland and the USA to provide English language programmes to prepare applicants for university entrance. As part of our service we offer our students support, advice and assistance in making their application for admission to our partner universities or to any other third level college or university.

Our Academic Year and University Pathway Programmes are designed for students of all levels who:

- Plan to enter university or college at undergraduate or graduate level.
- Need to prepare for the IELTS, TOEFL, Cambridge ESOL examinations or other university entrance examinations.
- Want to prepare for their experience in an English-speaking university by improving their skills and techniques in our English for Academic Purposes Module.
- Want to succeed in the university classroom with native English speakers.
- Need English for their major or whose university programme will be through English.

Students who do not meet the academic requirements for direct entry to undergraduate degrees should attend an International Foundation Programme. We are happy to assist students with applications and referrals to our partners who offer these programmes.

### Find out more...

Go to page 36 and 37 for information on our University Partners  
Please refer back to Pages 32 and 33 for information on our Examination Courses.





## Internship Programme

**The Internship Programme is open to all students over the age of twenty-one with at least an intermediate level of English. The course guarantees an initial study period at the Emerald Cultural Institute followed by an unpaid work experience placement in a company, allowing the student to gain excellent experience not only in a chosen field but also of working in an English-speaking environment.**

This course caters for all students and interests and combines a minimum of four weeks' language study with between six weeks and six months of hands-on working experience. Our internship is an ideal option for students studying with us for an Academic Year who are also looking to improve their future career prospects by gaining valuable experience to include on their CV.

### Internship Programme

In order for you to enrol for this internship programme we must receive eight weeks' notice and students should take into account seasonal availability in certain areas. The chosen company will decide the working schedule, which may include evenings and weekends. Although every effort is made to place each student in his or her first-choice company, availability may vary according to the sector.

The Emerald Cultural Institute works with our partner organisations who are specialised in the area of recruitment to find internship placements for our students in internationally-recognised companies as well as national and European organisations. We provide course participants with a range of working possibilities including:

- Business (financial services, IT and telecoms, marketing, consulting, hospitality, food, travel, fashion, retail)
- Media/arts/literature (newspapers, magazines, publishing, film, TV, music radio, theatre, museums, galleries, resource centres)
- PR/advertising (advertising agencies, PR agencies, in-house press offices, event planning),
- Politics/law/NGOs.





# Specialised and Business Courses

**With over 25 years of experience in answering the needs of business and professional clients, we are leaders in providing Specialised and Professional-Development programmes. We understand that all our clients have unique learning needs and our intensive programmes are designed to be flexible, with a focus on helping participants make maximum progress and achieve their learning objectives in a short time frame.**

Participants receive the highest-quality teaching and training during their time with us.

## Personal Intensive

This course is designed for the professional who wishes to concentrate on a particular area or who would like to make the maximum amount of progress in the period available. The course is tailor-made to suit the exact requirements of the client and all participants complete a Needs' Analysis prior to their arrival.

## English for Executives and Professionals

This small-group course has been especially structured and designed for participants from a business or professional background who require knowledge of English for their work and who wish to increase their language and communication skills in an intensive programme. With a maximum class size of five, participants are assured of personal attention from course tutors.

The content of the course includes simulated discussions and business meetings, telephone conversations, negotiations, report writing, problem solving and role-plays. On completion of the course participants should be able to speak English more confidently in business, professional and social situations.



---

### Personal Intensive Course

---

#### SPC1

---

30 hours of individual tuition per week

6 hours per day from Monday – Friday

Flexible timetable, which can be agreed with our Director of Studies

Minimum duration 1 week

For students aged 21 and over

Available every Monday

**Location: Dublin, New York**

---

---

### English For Executives and Professionals

---

#### SPC2

---

25 hours of specialised tuition per week from Monday-Friday

lunch with tutor to maximise English-language speaking opportunities

Timetable from 09.00 – 11.00  
from 11.15 –13.15  
and from 14.15 –15.15

Maximum number of participants 5

Duration 1 week

For students aged 21 and over

Available on fixed dates in Dublin and on request in New York

Minimum language-level good intermediate

**Location: Dublin, New York**

---

---

**Intensive Combined Course**

---

**SPC 3**

20 hours of group tuition a week plus 10 hours of specialised individual tuition

9.00-11.00 and 11.15-1.15 and 14.00-16.00 daily Monday to Friday

Maximum class size 14 students (Average 9)

Minimum duration 1 week

For students aged 18 and over

Start dates: every Monday except for complete beginners

All levels from Beginner \* to Advanced \*Beginners' courses available on fixed dates throughout the year

**Location: Dublin**

---

## Intensive Combined Course

This course offers a mix of group and individual classes and makes the full use of the limited time available during a short stay. Clients have the benefit of studying in general international group classes in the morning and can use their individual hours of tuition to concentrate on specific areas of interest.

## Training Through English: SPC 4

This tailor-made programme is available for groups only and offers participants a mix of General English tuition with training for their specific profession conducted through the English language in the afternoon. Our full-time staff is complemented by experts from the Irish professional scene who are invited to lecture in the Institute and we can organise visits to Irish companies involved in the particular field.

The professions for which this course is available include: Law, Medicine, Information Technology, Engineering, Banking, Finance, Journalism, Management, Aviation, Green Economy, Military and Tourism.

The timetable and content of the course is designed to match clients' needs and programmes are tailor-made to deliver a programme that meets your exact requirements.

**Courses are  
tailor-made to deliver  
a programme that  
meets the clients'  
exact requirements**



## Courses for Non-Native Teachers of English

**These courses have been specifically designed for non-native teachers of English at primary and secondary-school level. Courses help teachers to develop their classroom skills and to prepare lessons effectively. The main focus is on practical ideas and materials' development. Our teachers' courses are designed within the Comenius Framework and previous participants have successfully obtained E.U. Grundtvig Funding for our courses.**

### Primary School Teachers: SPC 5

A combination of language-development classes and modules focusing particularly on the teaching of English in the primary classroom, and on the needs of young learners. Modules covered in the course include: Songs and Games in the Language Classroom; Drama and Role-play for young learners; Tasks and Activities for Language Learning; Developing Speaking and Listening Skills in Younger Learners. Workshops help the participants to devise materials and lessons suitable for children. Pre-primary modules are also available on request.

---

#### Courses for Non –Native Teachers of English

---

#### SPC 5 / SPC 6 / SPC 7 / SPC 8

---

25 hours per week including lessons and cultural activities

---

9.00-10.45 and 11.15-1.00 daily  
Monday to Friday

---

An afternoon programme of seminars and cultural excursions

---

Maximum class size 15 students

---

Duration 2 weeks

---

For qualified Non-Native Teachers of English

---

On fixed dates in July and August. Courses can be arranged for closed groups throughout the year. Minimum numbers are required

---

**Location: Dublin**

---



**This course helps  
teachers to develop  
their classroom  
skills and to prepare  
lessons effectively**

## **Non-Native Secondary School Teachers of English: SPC 6**

The course focuses on the teaching of English in the secondary school classrooms and helps teachers to develop their classroom skills and to prepare lessons effectively. Learning theories and their applications are discussed and recent developments in the world of ELT are covered. Modules include Learner Strategies, Classroom Management, Teaching the Four Skills, Use of Authentic Materials, Drama in the Language Classroom, E-learning and Blended Learning. Special options in Literature and Cultural Awareness are also available. The main focus is on practical ideas and materials development.

## **Cambridge TKT: CLIL Course: SPC 7**

This is a preparation course for the Cambridge TKT: CLIL exam and is designed for English-Language teachers and teachers who are already using CLIL, or will in the future. CLIL (Content and Language Integrated Learning) is becoming more and more popular throughout the European Union and beyond and the Cambridge TKT is the only recognised, international CLIL exam. The course follows the Cambridge syllabus and covers all the major areas of the exam. During the course there are practice exams for each section and a full practice exam at the end of the course. This is a two week course and includes cultural activities for participants during their stay in Dublin.



## E-Learning

**Emerald is a leading school in offering e-learning services. We provide flexible courses and online versions of our Teacher Training and Professional Development programmes.**

### **Our Blended/Online Teacher Training Courses (for groups)**

Our online teacher training programmes are "blended" courses. This means that course participants begin their course in Dublin, where they attend key methodology/language awareness sessions and learn about using our online learning system. Then, when participants return to their home countries, they continue learning online using their own computers. All our online courses are supported by specially-built websites and weekly, online seminars where participants and Emerald tutors meet in our virtual classroom for presentations.

Our online courses are very flexible and perfect for busy teachers or those who want to take time to study the material in detail. Our courses focus on methodology and/or language awareness, and each course is designed to suit the needs of the course participants. Please contact the Institute for further information.

### **Educational Technology: E-learning and E-teaching: SPC8**

Using technology in the classroom is becoming an important skill for every teacher. This course is the perfect introduction for any teacher who wants to use educational technology. During this course participants will be introduced to key areas of modern teaching technology, both theory and practice, from using Interactive boards to using the Internet. At the end of each course participants will have built their own teaching website or class blog which will be ready to use with their own students. This course has been approved for Comenius funding.

"It has been a very enriching experience, we have done a lot of interesting work and the course has absolutely fulfilled my expectations."

- Oihana Estomba  
(Primary School Teacher, the Basque Country - online course participant)

**What Is E-Learning?  
E-Learning Is Using  
Modern Technologies  
To Teach And Learn.**

e-Learning  
The Emerald Cultural Institute  
Professional Development &  
Teacher Training



**JUNIOR**

**PROGRAMMES**







## High School Programme

### Overview

A high-school year in Ireland or the US offers students an excellent opportunity to improve their English while experiencing the lifestyle and culture of a new country. High-school students can spend part or all of an academic year studying in a quality school alongside Irish or American students of a similar age. We offer a placement and monitoring service in a variety of schools in Dublin and in Washington DC.

### The Schools

In Dublin and Washington students are placed in private high schools. We work with a number of schools of a variety of types: single-sex or co-educational, multi-denominational, non-denominational or managed by religious orders.

### The American Education System

Secondary education in the United States is known as "high school" and begins at age fourteen, with the ninth grade. Ninth, tenth, eleventh, and twelfth grade students are known respectively as freshmen, sophomores, juniors, and seniors.

Students generally follow highly individualized daily class schedules based on "core" classes such as English and Math and supplemented by optional "electives" such as art, music, and computer science. Students graduate by completing their high school's program of studies and obtaining a diploma, which makes them eligible to attend a two-year or four-year college or university.

### The Irish Education System

Second-level education generally starts at the age of twelve and consists of a three-year junior cycle followed by an optional "transition year" and a two-year senior cycle. At the end of each cycle there is a state examination. Students who graduate from high School and successfully complete a State Examination receive a Leaving Certificate allowing them to apply for courses in Third-Level Institutions. Acceptance into Third-Level programmes will depend on the results achieved in the State Examinations.





**A high-school year in Ireland or the US offers students an excellent opportunity to improve their English while experiencing the lifestyle and culture of a new country.**

## **Accommodation with Host Families**

During their high-school year students live with a host family, thus gaining first-hand knowledge and experience of family life and traditions in a different country. Our accommodation managers carefully select families in Washington and Dublin.

## **Monitoring Systems**

The Emerald Cultural Institute assigns a tutor to students on High School programmes. Students can be assured that there will be an adult outside of their host family who will support them throughout their stay in Ireland or in the U.S. The role of Emerald tutors is to monitor students' progress and provide a reference point for the students. Students on this programme have regular meetings with their tutor particularly during the initial settling-in stage.

## **Orientation**

On arrival, students on the High School Programme will be met by a representative from the Emerald Cultural Institute at the airport and are taken to their host family. All students are given an orientation session with the Student Welfare Officer and the tutor responsible for the high-school programme in their first week. The Student Welfare officer will also be on hand to help with any administration or documentation required.

## **English Language Programmes**

In order for students to get the most out of their high school year in Ireland, a good level of English is required. Our English Language Courses held in Dublin and New York during July and August helps students to prepare for the High School Programme the following September.





## Mini-Stay Programme

**Our Mini-Stay Programme is offered from September to June and is designed for school groups or closed groups of young students aged between 12 and 17. Studying a language in the country where it is spoken offers students an excellent opportunity to learn and practise skills inside and outside a classroom situation and to experience life in Ireland or the US firsthand.**

The programme combines expert English language tuition given by our highly-qualified teachers with an optional programme of interesting and lively extra curricular activities suitable for this age group. The academic programme can be agreed in advance of a group's arrival at the school and can include examination preparation. Based on each group's learning needs we can design a programme which will include the topics and subjects which are of most interest to the teachers and their students. As well as General English programmes can include: English plus Tourism, Examination preparation; English Plus Irish History and Culture or Business English.

### Sample one-week Programme English plus Irish History and Culture

Monday	Tuesday	Wednesday	Thursday	Friday
General English	General English	General English	General English	General English
<b>Break</b>	<b>Break</b>	<b>Break</b>	<b>Break</b>	<b>Break</b>
Youth Culture in Ireland	An Introduction to Irish Writers: Irish History in Literature	Irish History as represented in Irish Music, modern and Traditional	Contemporary Irish History	History as represented in films
<b>Lunch</b>	<b>Lunch</b>	<b>Lunch</b>	<b>Lunch</b>	<b>Lunch</b>
City Orientation	Guided Visit of Dublin Castle	Guided Visit of Dublin Writers' Museum	Guided Visit of Trinity College and the Book of Kells	Shopping in the City Centre
			Irish Music Evening in the School	

Classes can be held in the mornings or the afternoons and a timetable is arranged before the group arrives. A programme of afternoon, evening and weekend activities can be included at an additional cost.

Accommodation options for this programme in Ireland include a choice of host family, residence or hotel. Groups in New York will be accommodated in a residence or hostel.

### **Afternoon, Evening and Weekend Programme Options, Dublin**

**Afternoon:** Guinness Storehouse, Trinity College and the Book of Kells, National Museum, National Gallery, Liffey Cruise, Dublinia and Christchurch, Kilmainham Gaol, Wax Museum.

**Evening:** Irish Music and Dancing, Bowling, Quazar, Talent Show, Table Quiz, Treasure Hunts or night walking tours.

**Weekend:** Glendalough and Powerscourt Gardens, Kilkenny Castle and City, Newgrange and Hill of Tara

### **Afternoon, Evening and Weekend Options, New York**

**Afternoon:** The Empire State Building, Trump Tower, Rockefeller Center, Central Park, Times Square, the Metropolitan Museum, Natural History Museum and MoMa. Visits to recording studios, business offices and firehouses.

**Evening:** Blues and Jazz Concerts, Sing-alongs, walking tours or movies.

**Weekend:** Discover more of NYC in its five Boroughs.

### **Mini Stay Programme**

15 hours of group tuition per week

Maximum 15 students in each class

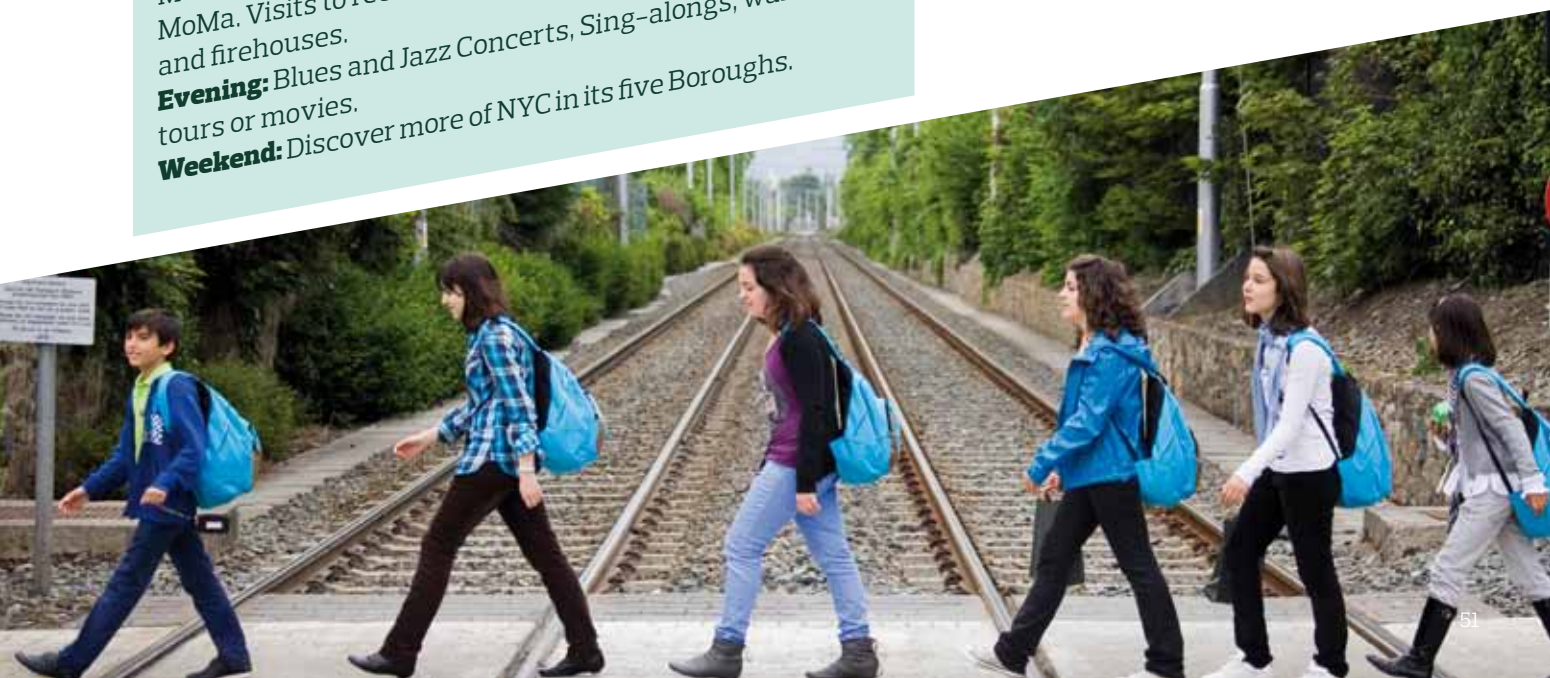
Closed groups in the mornings or afternoons

Age group 12-17

Wide range of optional activities in the mornings/afternoons, evenings and weekends

Close monitoring from teachers and experienced activities staff

**Location: Dublin, New York**



## Junior Summer Programmes

**Holiday courses for juniors at the Emerald Cultural Institute are lively and enjoyable, combining expert English language tuition with a daily programme of fun and interesting activities. We have designed our Summer Programmes with younger students in mind. The action-packed activity programmes keep all our students busy and stimulated during their stay with us.**

Our Multi- Activity programme combines an English language programme with a full range of extra curricular activities and students with a passion for sport can choose from a range of programmes offering English language tuition plus training from professional coaches in soccer, tennis, horse-riding or golf.

Course	Course Code	Age	Morning Programme	Afternoon Programme	Period
<b>Multi-activity</b>	SUM1	12-17	English Programme	Full programme of activities, sports, and excursions	June, July, August
<b>AC Milan Camp</b>	SUM2	12-17	English Programme	AC Milan Football Camp	July
<b>Leinster Rugby Camp</b>	SUM6	12-17	English Programme	Leinster Rugby camp	2 weeks only (July)
<b>English + Tennis</b>	SUM3	12-17	English Programme	Tennis Camp David Lloyd Centre	July
<b>English + Horse-riding</b>	SUM4	12-17	English Programme	Horse-riding	2 weeks only (July)
<b>English +Golf</b>	SUM5	12-17	English Programme	Golf lessons	2 weeks only (July)

\*Students staying for longer than 2 weeks can choose to combine any of the above programmes.



**Find out more...**  
Page 54 for information on our  
Multi-Activity programme

## Key Features of our Junior Programmes

**Expert English language** tuition providing interesting and challenging lessons to all young learners at all levels, from beginner to advanced.

**Course materials** are specially selected for each age group and the focus is on helping students to communicate effectively in written and spoken English. In addition to the use of the textbook, teachers provide supplementary materials from a variety of sources including magazines, newspapers, CDs, DVDs. Classes also include an introduction to the cultural part of the programme.

A **variety of centre locations** with excellent facilities allows us to provide the best environment for each learner.

Participation in an **exciting and fun programme** of afternoon, evening and weekend excursions with choices of different cultural visits and in-school activities to suit students with varied interests. For residential programmes activities are included every evening.

**Constant monitoring**, support and supervision by both our academic and activity staff to ensure that all students are progressing and participating fully in their programmes.

**Junior Programme fees include:  
Welcome kit, tuition,  
use of textbook,  
activity programme  
including entrance  
fees and transport,  
end of course diploma,  
full-board host family  
or residential  
accommodation.**



---

---

**Multi-activity Programme**

---

---

15 hours of group tuition per week

Maximum 15 students in each class

All levels from beginner to advanced

Age group 12-17

Wide range of activities in the afternoons and evenings

One full-day excursion every weekend

Close monitoring from teachers and experienced activities staff

---

---

**Location: Dublin, Sligo, New York**

---

---

## Multi-Activity Programme: SUM 1

From New York to Dublin to Sligo, this programme is ideal for students who want to learn English in one of our exciting destinations and meet new friends from all over the world. Outside of class, students enjoy an interesting and varied social programme, which offers the ideal opportunity to mix English language learning with afternoon visits to popular visitor and cultural attractions, a programme of sports and tournaments or other fun activities such as dance, music, drama, or arts and crafts.

**Learn to surf in Sligo**

**Have fun with new friends exploring Dublin city**

**♥ NY - Visit this vibrant city and its famous landmarks**





---

**AC Milan Camp**

---

**SUM 2**

---

15 hours of group tuition per week

Maximum 15 students in each class

All levels from beginner to advanced

Age group 12-17

Specialised football coaching from qualified junior football coaches from Monday to Friday

2 evening activities per week

One full-day trip each weekend to places of cultural interest

Close monitoring from teachers and experienced activities staff

---

**Location: Dublin, New York**

---

## Milan Camp

Students with a passion for soccer can combine learning English in the mornings with afternoon training sessions with the professional coaches from AC Milan in the afternoon. The objective of the AC Milan Junior Camp is to give world-class soccer training to motivated young players who wish to improve their technical and tactical knowledge of the game. Trained coaches from AC Milan are responsible for the soccer coaching and an official AC Milan Sports kit is included in the course fees.

Over the past ten years, students from over 20 countries have participated in this truly international programme.

**Combine learning English with training sessions with professional AC Milan coaches.**







---

**English Plus Tennis**

---

**SUM 3**

15 hours of groups tuition per week

Maximum 15 students in each class

All levels from beginner to advanced

Age group 12-17

Five afternoons of tennis coaching in the David Lloyd Tennis Centre from Monday to Friday

2 evening activities per week

One full-day trip each weekend to places of cultural interest

Close monitoring from teachers and experienced activities staff

---

**Location: Dublin**

---

**English Plus Tennis**

Our English Plus Tennis Camp provides the opportunity to combine English Language learning with professional tennis coaching. Together with the prestigious David Lloyd Centre in Dublin, we offer training from expert coaches who help students to improve their tennis skills. The emphasis of the camp is on teaching the right technique, through various fun games and drills according to the different levels involved. Students can also participate in a programme of evening and weekend activities.

**Together with the prestigious David Lloyd Centre in Dublin, we offer training given by expert tennis coaches.**





## English Plus Horse-Riding

The Emerald Cultural Institute is delighted to offer students a programme of English language tuition combined with horse-riding lessons in one of Ireland's largest equestrian centres. The Carrickmines Equestrian Centre is located in South Dublin, easily accessible from all our junior summer centres. Professional instructors provide coaching in indoor and outdoor arenas and the centre's extensive farmlands provide an ideal location for trekking and cross-country riding.

Students who are interested in participating in this programme can also choose to study in our residential centre in Sligo. Situated in the West of Ireland, this is an ideal location for this and many other outdoor activities.

## English Plus Golf

Students can combine their English course with the chance to improve their golf skills. Together with the Leopardstown Golf Centre we provide golf tuition for our students with licenced PGA golf professionals. Lesson and practice sessions focus on working with woods and irons, set-up, backswing, short game, long game and rules and etiquette of the game. Once a week participants can use their new skills playing nine holes on a prestigious and challenging golf course.

### English Plus Horseriding

#### SUM 4

15 hours of group tuition per week

Maximum 15 students in each class

All levels from beginner to advanced

Age group 12-17

Five afternoons of horse-riding lessons given by professional coaches

2 evening activities per week

One full-day trip each weekend to places of cultural interest

Close monitoring from teachers and experienced activities staff

**Location: Dublin, Sligo**

### English Plus Golf

#### SUM 5

15 hours of group tuition per week

Maximum 15 students in each class

All levels from beginner to advanced

Age group 12-17

Five afternoons of Golf practice and tuition from a golf professional.

2 evening activities per week

One full-day trip each weekend to places of cultural interest

Close monitoring from teachers and experienced activities staff

**Location: Dublin**



**ACCOMMODATION**



## Students attending a course at the Emerald have a choice of accommodation options in our different locations.

### Host family

Staying with a host family gives students an excellent opportunity to develop their language skills in a natural everyday context. The host-family experience is one of the best ways in which students can learn about the lifestyle and culture of the location where they are studying.

Our accommodation team personally select families and the relationship with families is carefully managed and monitored through a process of regular contact, visits and feedback from both families and students.

Accommodation for juniors is provided on a full-board basis unless otherwise requested. Accommodation for adults is arranged on a half-board basis with full board at the weekends.

### Residential Accommodation

Residential accommodation can be arranged for students attending courses at the Emerald Cultural Institute. A range of residential options is available in Dublin, Sligo and New York.

#### University or College Residence

We offer high-quality residential accommodation on university or college campuses. Depending on the location selected you can choose from one of the following types of accommodation options:

##### Traditional Dormitory

Single or twin room accommodation in a dormitory style with shared facilities.

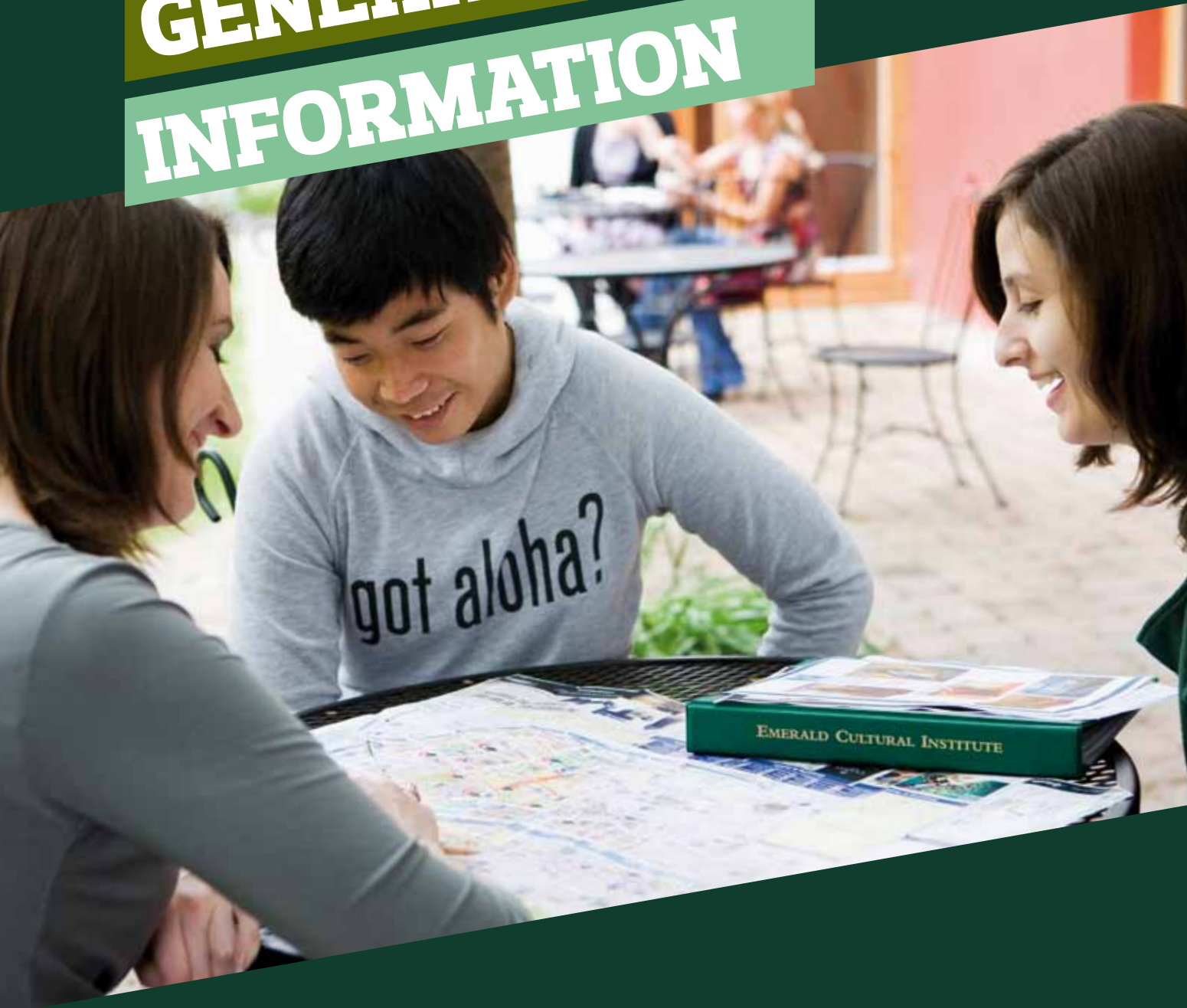
##### Apartments

Students can be accommodated in modern apartments on the grounds of the university or college. Depending on the campus, selected students can be accommodated in apartments with single or twin ensuite rooms. Apartments share a fully-equipped kitchen and a comfortable living area.

Other accommodation options include a range of **guesthouses, hotels and corporate self-catering apartments**. We can offer special rates on accommodation in a number of international and national hotels.

**GENERAL**

**INFORMATION**





## Medical and Travel Insurance

All students studying in Ireland or the US should obtain appropriate medical insurance in their own country before departure and students are also advised to take out travel insurance to cover accident or loss of baggage. Medical Insurance can be arranged by the Institute on request.

Students travelling to Ireland from EU countries should bring their European Health Insurance Card with them. Non-EU students who require a visa to study in Ireland will need to submit details of their medical insurance when submitting their application.

Non-EU students who require a visa to study in Ireland will need to submit full details of their medical insurance policy to the Immigration Bureau. To comply with immigration guidelines, all non-EU students are required to have adequate medical insurance valid for their entire stay in Ireland and the policy should be submitted in English or accompanied by an English translation.

## Personal Insurance

Students are not insured by the school or by the host family against illness, theft or loss of personal effects and the school accepts no responsibility in the event of such occurrences. Personal insurance cover is therefore recommended.

## School Holidays

In the case of public holidays which occur on a Monday students may begin their course on the Tuesday of that week. Public Holidays are non-refundable.

## Airport Transfers

Transfers can be arranged for all students arriving in Ireland or the US at an additional cost. You can book the transfer on our enrolment forms. Students under 18 must be accompanied to and from the airport on arrival and departure.

## Publicity Materials

Permission is given by the student or their parents or legal guardian for the use of student comments or testimonials and photographs/images of the students in the official promotional material for the Emerald Cultural Institute with acceptance of our terms and conditions. Please indicate clearly at the time of enrolment if you do not wish to appear in our Publicity material.

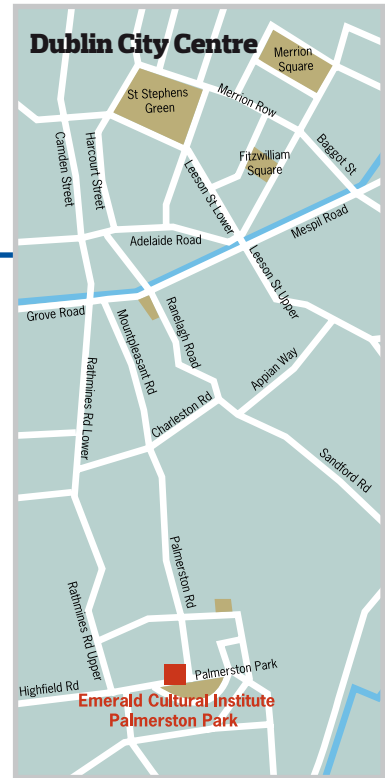
## Terms and Conditions

For a full list of our terms and conditions please refer to our **Price List**.

# Dublin



## Emerald Cultural Institute



## New York

