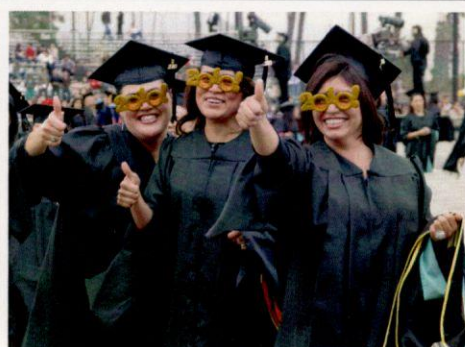
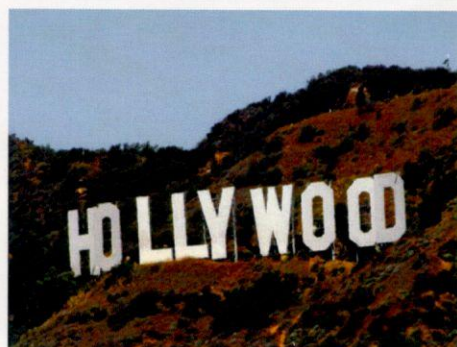
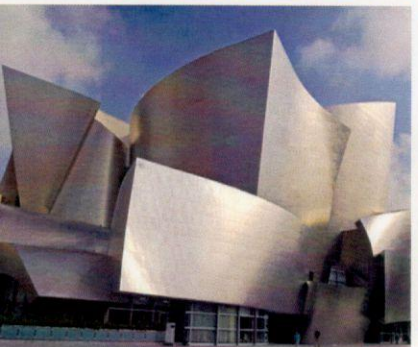
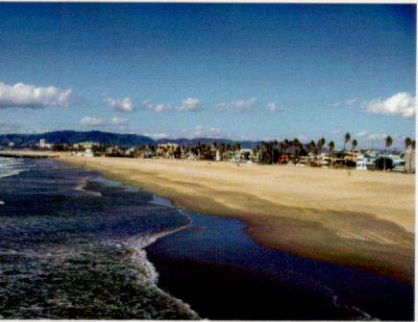
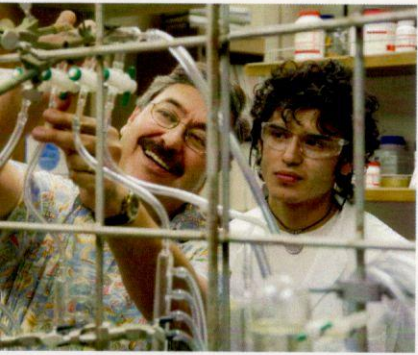


Cal
State
LA

California State University Los Angeles



**Be at the
center
of L.A.!**

- ▶ Beautiful 70-hectare hilltop campus at the heart of Los Angeles
- ▶ Close to the LA civic and cultural center, Hollywood, and the Pacific Ocean
- ▶ Six Colleges offer more than 60 nationally recognized degrees in science, arts, business, criminal justice, engineering, nursing, education and humanities
- ▶ Award-winning faculty
- ▶ A leader in high-quality higher education since 1947, with 20,000 students and more than 210,000 alumni
- ▶ Very popular intensive English instruction through the English Language Program (ELP), with small class sizes and excellent preparation for TOEFL
- ▶ Student housing in on-campus furnished apartments with kitchens, or homestay arrangements with families in the local area

Application and Admission

- ▶ Application dates for Fall admission: October 1 - March 1
- ▶ TOEFL scores: minimum 500 paper-based or 61 iBT
- ▶ No SAT or ACT scores required

Contact Information

- ▶ www.calstatela.edu/international
- ▶ **International Office:**
email at internationalstudentsoffice@cslanet.calstatela.edu
- ▶ **English Language Program Office:**
email at ELPinfo@CalStateLA.edu