



Language Courses Abroad Students and Adults

Singapore
France
Germany
Spain
Italy
Costa Rica
China
Japan



**FREE APPLE
WATCH**

See page 44

FREE APPLE WATCH

Get a free Apple Watch Sport when you enroll in an Intensive Course of 8 weeks or longer.

EF always leads the way in uniting language learning with the latest technology. That's why we're offering a free Apple Watch Sport when you enroll in an Intensive course of 8 weeks or longer.



FREE FLIGHT

Fly to your destination for free when you enroll in an intensive or exam course of 15 weeks or longer.

ENHANCE YOUR TRIP

Optimize your study abroad experience with EF's travel services. From booking flights to expert advice – rest assured that we've got it covered.



Travel like a jetsetter

EF's travel services will search for the best deal, book your flight and manage your reservation.



Arrive in style

Catch a ride with EF's transfer service – whether you're being picked up from the airport to begin your adventure or dropped off to make your way back home.



Maximize your studies

Make the most of your time abroad by upgrading to an intensive course or extending your studies.



Benefit from our experience

Studying abroad is a big decision. Stop by the EF office or email us at ILS@ef.com to ask your important questions.



Have peace of mind

Ensure that your medical expenses and personal belongings are covered. You'll also have course and liability protection – and support around the clock with insurance coverage customized for you.

Request EF Travel Services on the Enrollment Form or by calling 1-800-992-1892.

THE WORLD IS WAITING

EF HAS BEEN OPENING THE WORLD
THROUGH EDUCATION SINCE 1965 –
AND HAS HELPED MILLIONS OF PEOPLE
LEARN A LANGUAGE ABROAD ON THE
EXPERIENCE OF A LIFETIME.

Your experience abroad

- 04 Welcome to EF
- 06 Why EF
- 08 Learn faster, guaranteed
- 09 Our personal approach
- 10 Proof of your success
- 12 Personalize your course
- 14 Language courses
- 16 Long term courses
- 18 At home in the world
- 20 Expect adventure

22

EF PARIS

Learn French at our school
in the 9th arrondissement.



26

EF PLAYA TAMARINDO

Live steps from the beach
at our colonial villa.



34

EF BERLIN
Study in Germany's
cultural metropolis



38

EF TOKYO
Experience Tokyo's modern
and fast-paced culture.



France

22 Paris

24 Nice

Costa Rica & Spain

26 Playa Tamarindo – Campus

28 Barcelona

30 Malaga – Campus

31 Madrid

Italy

32 Rome

Germany

34 Berlin

35 Munich

New!

Singapore

36 Singapore

China & Japan

37 Beijing

38 Tokyo

Additional information

40 Other EF Programs

41 What our students say

42 Terms & Conditions

43 Enrollment Form



42

**BOOK TODAY
FOR A FREE
APPLE WATCH**

**Get a free Apple Watch Sport
when you enroll in an Intensive
Course of 8 weeks or longer.**

Simply send the enrollment
form our way in the mail or go
to www.ef.com/language.

WELCOME TO EF



Experience, quality and innovation since 1965.

Over fifty years ago, Bertil Hult founded EF with the mission to open the world through education. Now the world's largest private education company, we've helped millions of people learn a language, explore a new city and make friends from around the globe.

Study abroad at one of our 12 destinations in 8 countries to begin your next adventure. Whether it's Berlin or Barcelona, Rome or Tokyo, Playa Tamarindo or Paris – you'll make guaranteed progress in your studies thanks to our innovative blend of classroom lessons, interactive tools and cultural immersion.

Learning a language is just the beginning of the EF experience. Personalize your course to focus on the subjects you enjoy with our Special Interest Lessons – and explore your destination city with a full schedule of activities and excursions.

Whether this is your first trip abroad or you're a regular globetrotter – join us in bringing the world together, one student at a time.

Eva Kockum, President,
EF International Language Centers



OUR HISTORY



1965

EF Education First is founded in Sweden.

1978

The first EF International Language Center is opened in Cambridge, England.

1988

EF is the official supplier of language training services for the Seoul Olympics.

1993

EF is the first foreign language school allowed to open in Shanghai.

1995

EF and Apple collaborate on computer-aided language learning initiatives.

1998

EF sponsors two boats in the Whitbread Round the World sailing – one of which comes first place.

EF Centers ●

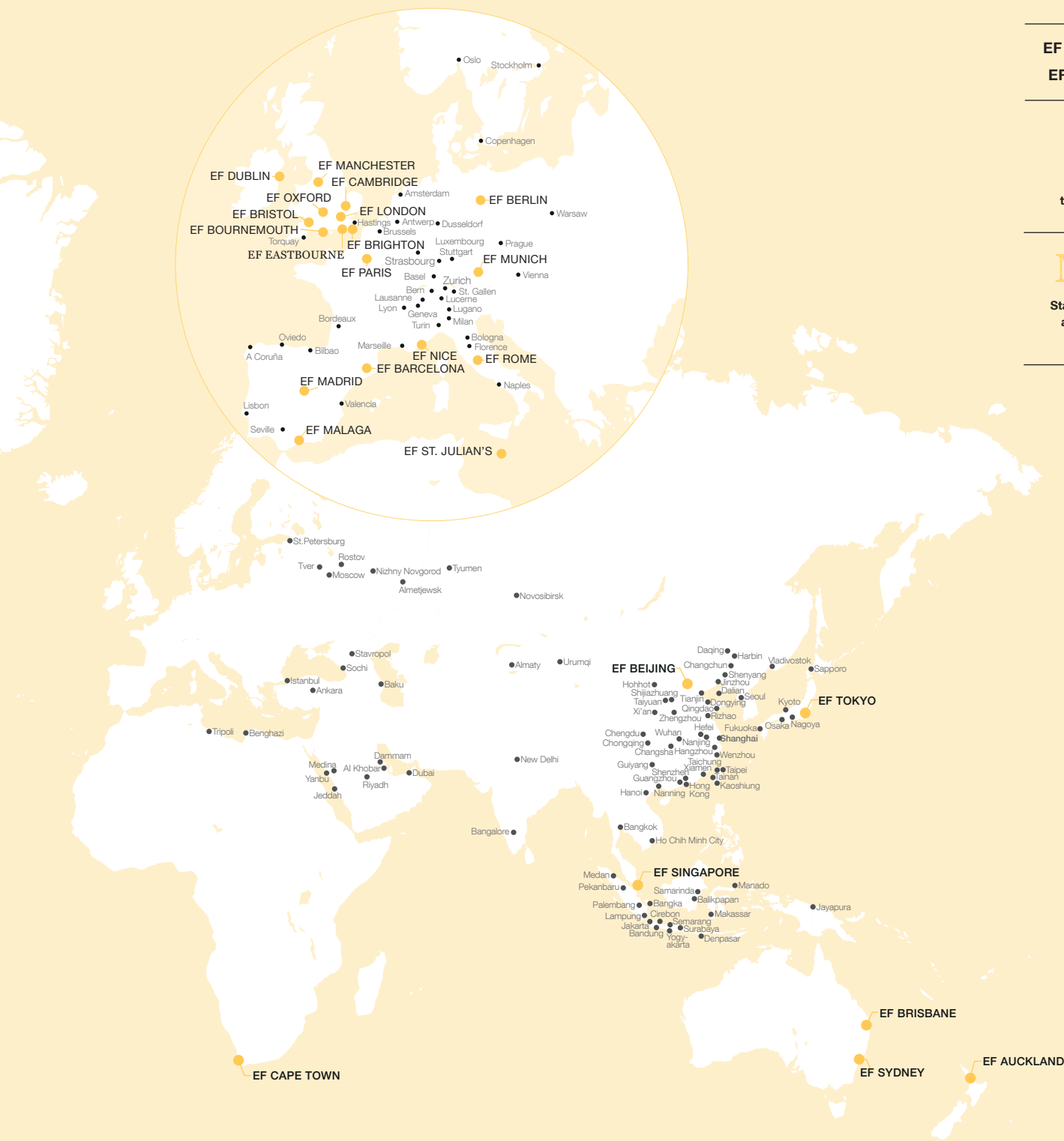
EF Offices ●

2-52

Study from
two weeks up
to a whole year.

MON

Start your course
any Monday, all
year round.



2003

2005

2008

2009

2012

2013

2014

2016

Hult International
Business School
is founded by EF.

New teaching
method, the
EF Efecta™
Learning Method,
is launched.

EF assumes
ownership of
Marymount College,
New York. EF is the
official supplier of
language training
services for the
Beijing Olympics.

EF Research Unit
at the University
of Cambridge
Department of
Theoretical and
Applied Linguistics
is established.

The British Coun-
cil's Innovation
Awards nominates
EF's classroom
app for iPad for
excellence in digital
technology.

EF and The United
Nations Alliance Of
Civilizations found
the UNAOC-EF
Summer School
at EF New York.

EF is the official
supplier of
language training
services for the
Sochi Olympics.

EF is the official
supplier of language
training services for
the Rio Olympics
– providing English
training to more than
a million Brazilians.

WHY EF?

LEARN A LANGUAGE FASTER AT ONE OF OUR ACCREDITED CENTERS AROUND THE WORLD. OUR FLEXIBLE LENGTH COURSES START EVERY MONDAY AND CAN BE PERSONALIZED TO YOUR GOALS AND INTERESTS. YOU'LL MAKE GUARANTEED PROGRESS WHILE EXPLORING WITH FRIENDS FROM OVER 100 COUNTRIES.

Personalized

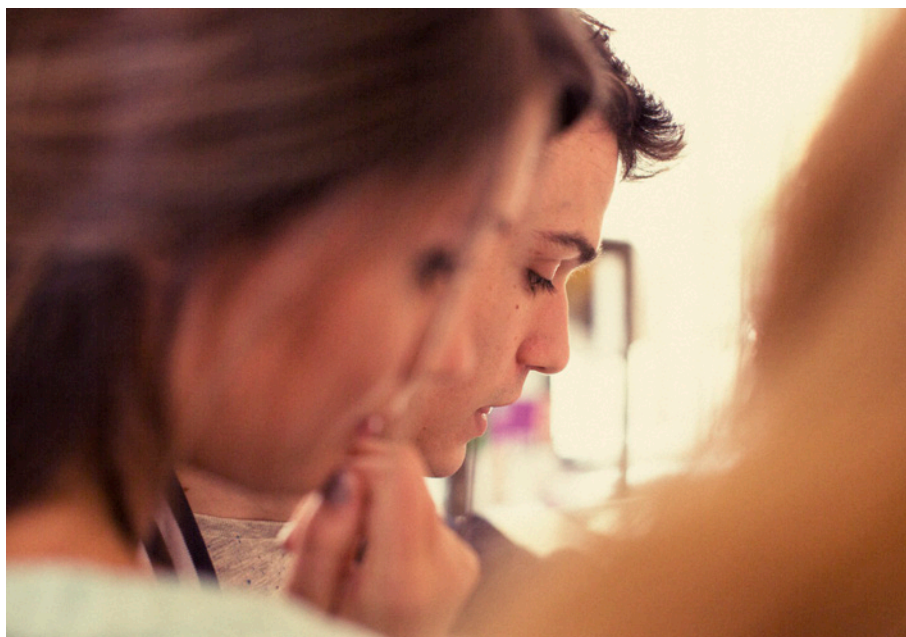
Build your perfect language course by studying when, where and how you like. Our flexible-length courses start every Monday and are available in six languages and intensities – and can be personalized to accommodate your specific needs and goals. Take your learning to the next level with online practice tests and speaking exercises, designed so you can practice your study language anytime, anywhere.

Guaranteed

You are guaranteed to advance one language level every six weeks with our expert teachers, the latest language-learning technology, and interaction with the local culture. Our innovative EF Efecta™ Learning System is designed to make your learning experience richer and more individualized. EF will also help you prepare for and take official language proficiency exams.

Comprehensive

EF offers you a complete study experience, including free-time activities and excursions with full support around the clock. We help you with every detail – from arranging your accommodation to flights, visa assistance to airport transfers, meals to comprehensive travel and medical insurance coverage. That way you can focus on learning and enjoying your course.





Our Accreditations



EF Language Schools Ltd
Certification No. 0006
educationaloversight.co.uk/GSQE
Educational Oversight 2014

Accredited by the
BRITISH COUNCIL
for the teaching
of English in the UK



The Independent Schools Inspectorate (ISI) is the approved educational oversight body authorised by the UK Home Office to enroll international students under Tier 4 of the Points Based System.

The EF International Language Centers in London, Cambridge, Brighton, Oxford, Manchester, Bristol, Eastbourne and Bournemouth are accredited by the British Council.

EF Dublin is recognized by ACELS, a service of quality and qualifications in Ireland for English language teaching.



The EF International Language Centers in the USA are accredited by ACCET.



EF Vancouver and Toronto are accredited by Languages Canada.



The EF International Language Centers in Sydney and Brisbane are accredited by NEAS.



The EF International Language Centers in Paris, Nice, Madrid, Barcelona, Malaga, Rome and Munich are accredited by EAQUALS.



EF is accredited by English New Zealand in Auckland, which is the voice for both private and state sector English language schools in New Zealand.

International

At EF you will study alongside classmates from 100 countries – who will become your friends for life. You'll come together from big cities and small villages and represent many nations and cultures. But one thing you will share is your new common language and the experience of discovering a new country.

Inspiring

EF maintains its own schools in some of the world's greatest cities. We've worked closely with top designers and leading educators to create the optimal learning environment for our students. Every facility boasts modern interiors, social space and welcoming staff to ensure that you feel at home during your experience abroad.

Accredited

Our schools meet the highest standards of excellence set by organizations respected around the globe – including the British Council, Independent Schools Inspectorate and Eaquals. EF is also one of the only language schools to offer university certified courses.

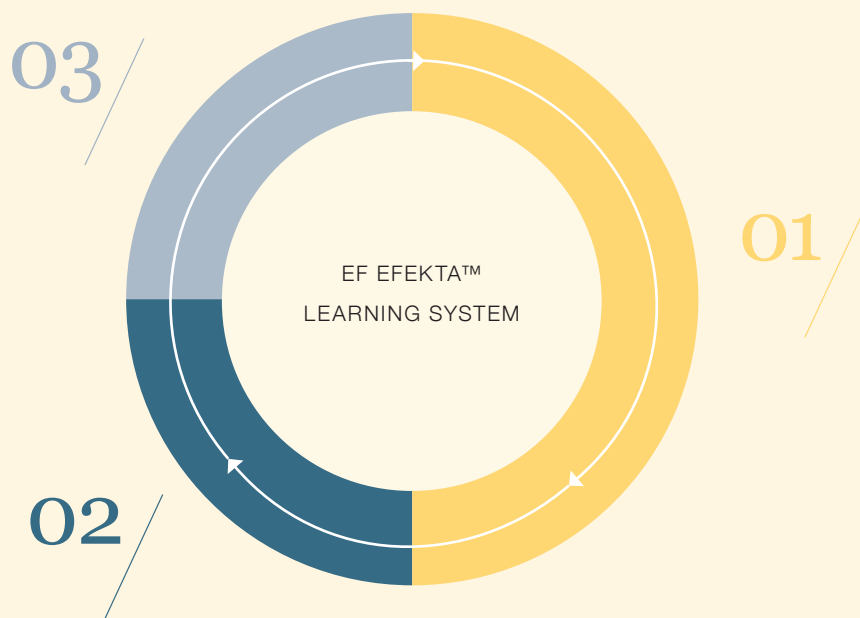


LEARN FASTER, GUARANTEED

efekta™
learning system

See our innovative
method in action.
www.ef.com/efekta

EF'S INNOVATIVE LEARNING METHOD IS BASED ON RAPID PROGRESS THROUGH PERSONALIZED STUDY. YOU'LL ADVANCE ONE LANGUAGE LEVEL EVERY SIX WEEKS – THANKS TO OUR COMBINATION OF CLASSROOM LESSONS, INTERACTIVE TOOLS AND CULTURAL IMMERSION.



01/ LEARN

Inspiring professional teachers

Our teachers are selected for personality, dedication, enthusiasm and experience. They lead interactive, conversation based classes that teach real-world language based on current events and everyday topics.

Small class size

We always limit general language class sizes to 12 to 15 students so that you are sure to receive personal attention from your teachers. This ensures you will have the time to express yourself and to interact with classmates from around the world.

Technology-enhanced classtime

You'll learn faster thanks to technology-enhanced interactivity in the classroom – from our innovative tablet app to engaging multimedia lessons.

Interactive classrooms

Our teachers are trained to use technology to your advantage, so in addition to tablets, all of our schools are fully equipped with classroom media, projectors, a computer lab, and WiFi.

Special Interest Lessons

Personalize your language studies by taking Special Interest Lessons (SPINs) in the subjects you want to learn more about. Every school offers dozens of SPINs, in a wide range of business, career, academic and arts-related topics.

02/ ABSORB

Teacher-led study lesson

Gain confidence by learning to express yourself in a natural way with the correct grammar and pronunciation. Your teacher is always there to answer any questions you may have.

Self-paced practice

Complete assignments by utilizing online flashcards, podcasts, videos, and much more. You can always work at your own pace, when you're ready to study.

Non-stop mobile access

Access a variety of additional lessons and activities online to maximize your course. Practice exams, access private lessons, and participate in online classes and guest lectures.



“Working with the top minds in linguistics, teaching and assessment, EF has teamed up with the leading universities to help advance language learning.”

DR. CHRISTOPHER
MCCORMICK
**HEAD OF EF ACADEMICS
AND THE EF RESEARCH UNIT
AT CAMBRIDGE UNIVERSITY**

03/ APPLY

Cultural excursions

Benefit from guided learning, improve your listening comprehension, and discover the language outside the classroom with your teacher.

Life with the locals

Improve your accent, learn to speak naturally, and gain authenticity with local terms and phrases through constant interaction with native speakers.

Work experience

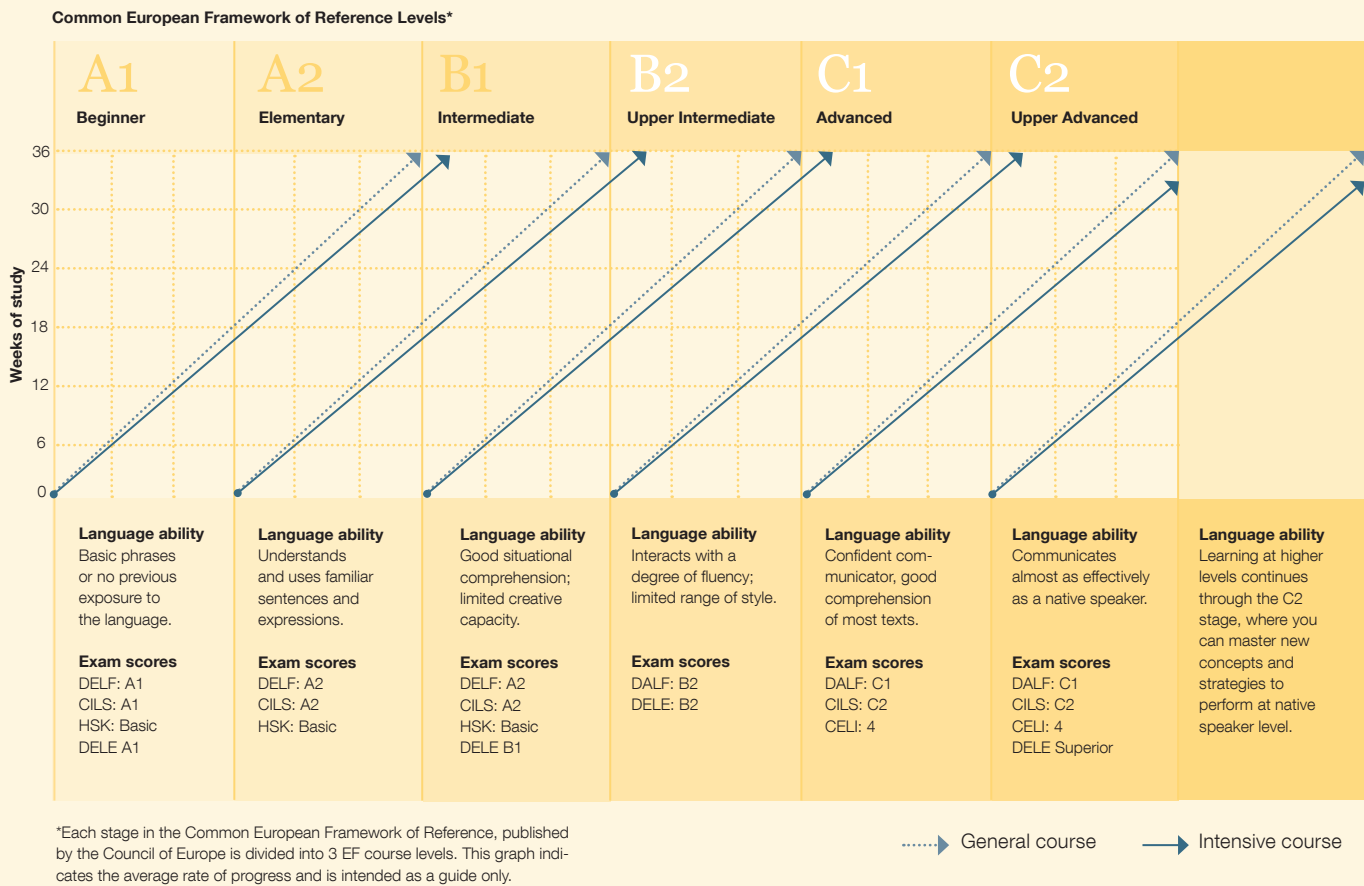
You can participate in an internship or gain volunteer experience in your chosen field. Build career-specific vocabulary, learn to share ideas, give presentations, and adhere to the local office etiquette.



PROOF OF YOUR SUCCESS

RETURN HOME WITH A PORTFOLIO OF ACADEMIC ACHIEVEMENTS INCLUDING FINAL EF TEST SCORES, AN EF COURSE CERTIFICATE AND UNIVERSITY TRANSFER CREDIT. SUPPLEMENT YOUR RESUME AND SHOW THE PROGRESS YOU'VE MADE TO UNIVERSITIES AND EMPLOYERS WITH AN OFFICIAL LANGUAGE EXAM.

LANGUAGE PROGRESS WITH EF





THE EF RESEARCH NETWORK

Exploring the Future of Language Learning
EF collaborates with top universities to fundamentally improve the way students learn languages. Network scholars explore advances in linguistics, teaching, technology, testing, and cultural immersion. Together, we are committed to research and innovation that will shape the future of language learning.

Members of the EF Research Network include:

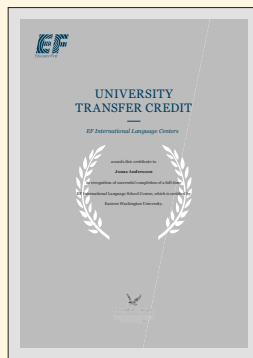
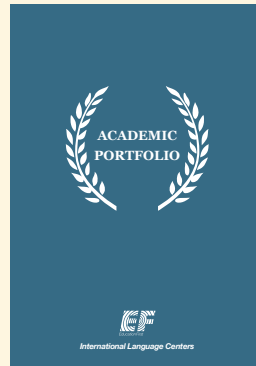
- University of Cambridge
- Harvard Graduate School of Education
- Peking University
- Lomonosov Moscow State University
- University of São Paulo
- EF Learning Labs

For more information, visit www.ef.edu/research.



**EF Research Unit at
University of Cambridge**

Department of Theoretical and Applied Linguistics



University Transfer Credit – through Eastern Washington University (EWU) for German, French, Italian, Spanish, Mandarin, and Japanese courses.



EF Certificate of International Internship – complete an internship or volunteer abroad for certification.



EF Course Certificate – awarded in recognition of successful completion of your studies.



EF Language Assessment – personalized account of your listening, speaking, reading, and writing linguistic ability.



EF Course Report – A complete list the courses you took and the grades you received during your studies with EF.



Official language exam scores – receive a certificate from the testing authority certifying your language proficiency level.

PERSONALIZE YOUR COURSE

CHOOSE YOUR DESTINATION AND LANGUAGE COURSE – THEN
PERSONALIZE YOUR STUDIES WITH SUBJECTS THAT INTEREST YOU AND
FURTHER YOUR ACADEMIC AND PROFESSIONAL GOALS. START YOUR
COURSE ANY MONDAY, AND STUDY FROM TWO WEEKS UP TO A YEAR.

01

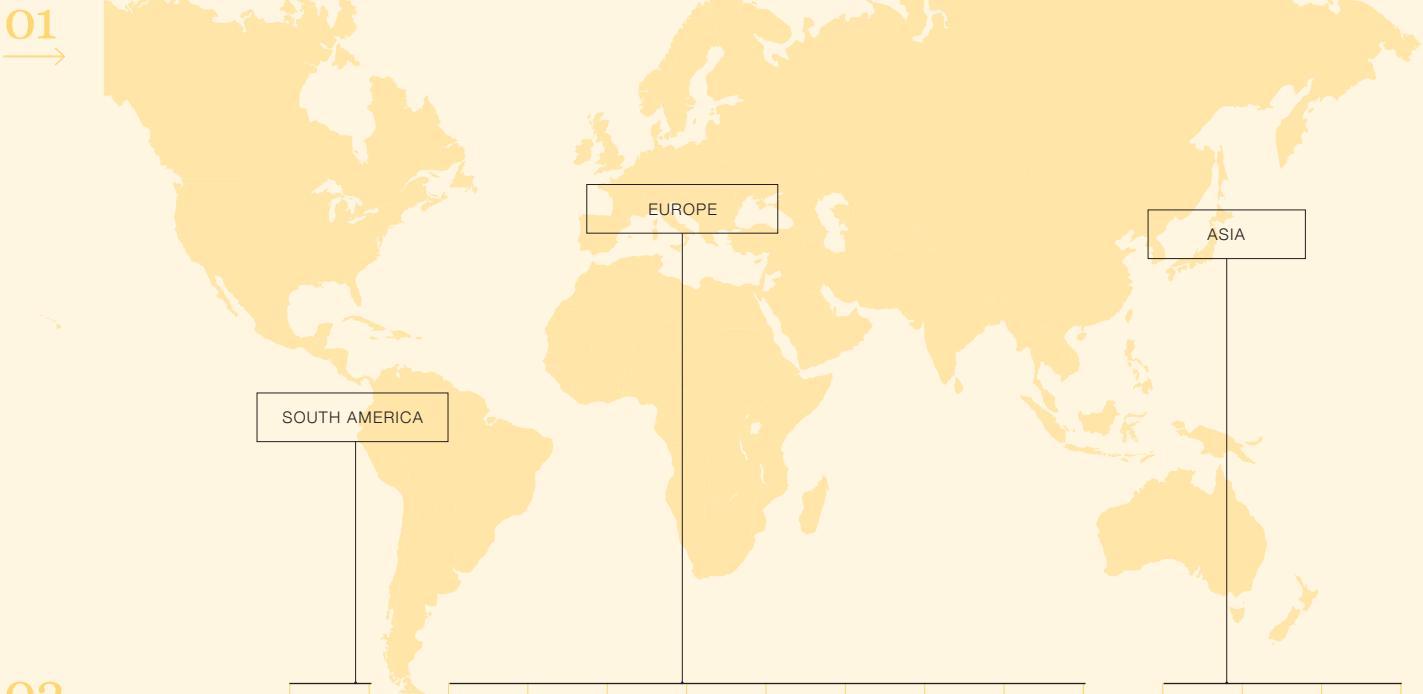
Pick your destination

02

Select your course

03

Choose your Special Interest Lessons



| | EUROPE | | | | | | | | | | ASIA | | |
|-----------------------------------|-----------------|--|------|-------|-----------|--------|--------|--------|--------|------|-----------|---------|-------|
| | Playa Tamarindo | | Nice | Paris | Barcelona | Malaga | Madrid | Munich | Berlin | Rome | Singapore | Beijing | Tokyo |
| EF Intensive | • | | • | • | • | • | • | • | • | • | • | • | • |
| EF General | • | | • | • | • | • | • | • | • | • | • | • | • |
| EF Basic | • | | • | • | • | • | • | • | • | • | • | • | • |
| EF Exam preparation | • | | • | • | • | • | • | • | • | • | • | • | • |
| EF Internship Experience | • | | • | • | • | • | • | • | • | • | | | |
| EF Academic Year Abroad General | • | | • | • | • | • | • | • | • | • | • | • | • |
| EF Academic Year Abroad Intensive | • | | • | • | • | • | • | • | • | • | • | • | • |
| EF Twin & Triple Center | • | | • | • | • | • | • | • | • | | • | | |
| EF Multi-Language Year | • | | • | • | • | • | • | • | • | • | • | • | • |
| EF College Credit | • | | • | • | • | • | • | • | • | • | • | • | • |
| EF Junior | | | • | | | • | | • | | | • | | |



Choose from 150
Special Interest Lessons
to focus your studies on
the subjects you enjoy.

03

SPECIAL INTEREST LESSONS (SPINs)

Focus your language studies on the subjects you enjoy with Special Interest Lessons (SPINs) – whether it's learning the latest slang or how to write the perfect resume. SPIN Lessons vary from destination to destination.

Language focus

Vocabulary, Grammar, Advanced Grammar, Pronunciation, Idioms, International Slang, Communication Skills

Career development

Marketing, Corporate Culture, Business Language, Leadership & Management, Public Speaking, Telephoning Skills, Presentation Skills, International Communications, Professional Development, International Trade, Logistics, Public Policy, Travel Industry, Medical Studies, Hotel Management, Journalism

Exam or academic preparation

DELf, DALF, DELE, DSEN, DIEN, TestDaF, CILS, CELI, HSK, JLPT, Critical Thinking, Academic Writing

Culture and arts

Current Affairs, Modern Culture, Pop Culture, Globalization, Social Media, Global Environmental Issues, Regional Cultures, World Cultures, Archeology & Museum Studies, Alternative Medicine, History & Architecture, World Literature, Chinese Calligraphy, Society & Sport, Theater, Poetry, Photography, Fashion & Design, Flamenco Dancing, TV & Film Studies, Politics & Society, International Cuisine, French Cuisine, Creative Writing, Music

LANGUAGE COURSES

EF INTENSIVE COURSE

MOST POPULAR

Learn a language as quickly as possible for academic or professional growth. The perfect mix of progression and cultural immersion.

32 lessons of 40 min/week

16 General Language Lessons

4 iLab Language Lessons

10 Special Interest Lessons

2 Lecture Sessions

Our Intensive Course offers the maximum number of Special Interest Lessons, to ensure you successfully achieve your goals while studying abroad. You can take SPIN Lessons focused on language skills, professional development, exam preparation or culture and arts.

Why is EF Intensive our most popular course?

Not only will you maximize your language improvement, you will also gain valuable time to practice with fellow students. This extra interaction enables you to communicate in a natural way, faster than on other courses, and in the process form friendships to last a lifetime.

How many weeks should students enroll for an EF Intensive Course?

The longer you study, the more you will improve, guaranteed. That's why students seeking advanced language skills enroll for a minimum of 4 to 6 weeks. Keep in mind that Intensive students make progress 25 to 50% faster. A 6-week course allows most students to advance one full level of ability, and many intensive students choose to achieve greater fluency with courses of 3 months or more.

Level: Beginner to Advanced

Start date: Every Monday, year round

Length: 2 to 52 weeks

Description:

Make maximum progress during your stay abroad. Highly recommended for students who need to learn a language as quickly as possible for academic or professional reasons.

Our structured syllabus, comprised of 32 morning and afternoon lessons a week (total tuition time of 21 hours and 20 minutes), will have you speaking and writing with confidence in the least amount of time.

EF GENERAL COURSE

Gain a sound understanding of a language through a well-rounded course.

26 lessons of 40 min/week

16 General Language Lessons

4 iLab Language Lessons

4 Special Interest Lessons

2 Lecture Sessions

Level: Beginner to Advanced

Start date: Every Monday, year round

Length: 2 to 52 weeks

Description:

This carefully composed course is designed to help you move up one course level of ability every six weeks. EF's General Course includes 26 morning and afternoon lessons taught both in the classroom and iLab – focused on communicating clearly in everyday language (total tuition time of 17 hours, 20 minutes).

You'll also benefit from 4 Special Interest Lessons, which focus your studies on the subjects you enjoy and help you reach your academic goals – whether it's your destination's culture or preparing for an official exam.

EF BASIC COURSE

Focus on how to communicate and enjoy lots of free time.

20 lessons of 40 min/week

16 General Language Lessons

2 iLab Language Lessons

0 Special Interest Lessons

2 Lecture Sessions

Level: Beginner to Advanced

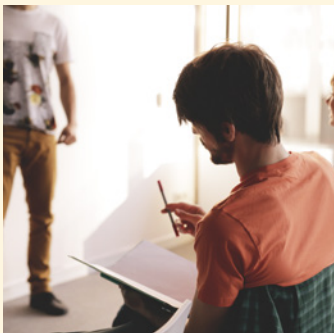
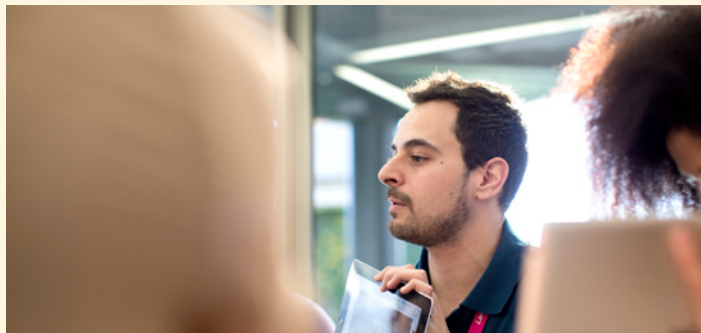
Start date: Every Monday, summer only

Length: 2 to 12 weeks

Description:

Combine plenty of free time abroad with 20 morning and afternoon language lessons a week (total tuition time of 13 hours and 20 minutes) – combining General Language Lessons, iLab Language Lessons, and Lecture Sessions.

This course concentrates on understanding and speaking the language in practical situations. You'll benefit from a comprehensive materials, personalized instruction, and interactive classtime.



EF EXAM PREPARATION

Prepare for an officially recognized language exam.

32 lessons of 40 min/week

16 General Language Lessons

4 iLab Language Lessons

10 Exam preparation special interest lessons

2 Lecture Sessions

Levels: Intermediate to Advanced
Length: 6 to 52 weeks

Description: Prepare for officially recognized language exam like the DALF, DELE, DELF, HSK, and more. These exams, recognized around the world, enhance your resume and pave the way to university acceptance, and international careers in many diverse fields.

Lessons focus on intensive vocabulary building and include specialized instruction in test-taking techniques (total tuition time of 21 hours and 20 minutes).

Available in: All destinations except Singapore

Start dates: Every Monday, year round. More details on p. 42

EF INTERNSHIP EXPERIENCE

Learn the skills you need to get your dream job.

Description: This program combines an internship of 50 hours or more with a minimum 4-week EF Intensive Course. During classroom time you'll improve your language skills as well as learn resume writing and interviewing techniques. After class, you'll perfect your new language ability by working in a part-time, unpaid position at a professional company.

Available in: All EF schools in France, Germany, Italy, Spain, and Costa Rica

Prefer a longer internship?
Try our Internship Plus Program. Choose a 3+3 program (3 months of language studies and a 3 month internship) or a 6+3 program (6 months of language studies and then a 3-month internship). Call the Admissions Team for more details.

EF COLLEGE CREDIT

Study abroad and earn academic credit. With EF language immersion programs you will go abroad and learn a language where it is natively spoken while progressing at your college or university at home. Gain superior language skills, the cornerstone of an international education. Achieve intercultural competence which will provide you with the tools to succeed in our increasingly interconnected world.

How to earn academic credit while abroad

You can earn transfer credits issued by our partner Eastern Washington University. You will be eligible to earn four semester credits (or 6 quarter credits) for every four week course, upon successful completion of the program.

Additionally, EF has pre-approved programs granting academic credit to students from partnering colleges and universities. The EF Admission Team can advise you if your school is included.

EF JUNIOR

Language study geared toward younger learners.

26/20 lessons of 40 minutes/week

A full schedule of evening and weekend events

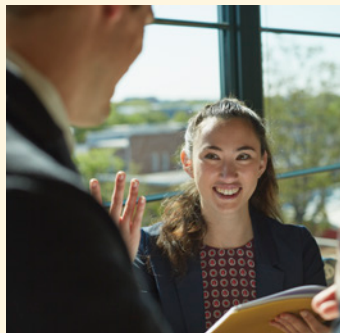
Levels: Beginner to Advanced
Ages: 13-15 years old
Travel options: Group or individual

Description: These courses provide an ideal learning environment for younger students who want to make maximum progress with 26 or 20 language lessons a week. Focus on communicating clearly in everyday situations by building competency through conversation, accuracy through exercises and confidence through our friendly environment.

An all-inclusive package: Our junior courses are designed with a program personalized to the needs of younger learners. Whether your travel abroad independently or in an escorted group – curriculum, accommodation, activities and excursions are part of an all-inclusive package.

Locations: Singapore, Malaga, Munich, Berlin, Nice, Singapore

Start dates: Select Monday in June, July, and August



LONG TERM COURSES



EF ACADEMIC YEAR ABROAD INTENSIVE

Benefit from the maximum amount of learning time every week.

32 lessons of 40 min/week

16 General Language Lessons

4 iLab Language Lessons

10 Special Interest Lessons

2 Lecture Sessions

Level: Beginner to Advanced

Start date: January, April, June, September and November

Length: 6, 9 or 11 months

Description:

Our Intensive program offers maximized learning with unique personalization options, challenging academic projects and a wide variety of teaching methods. You'll gain fluency with lessons that blend interactive teaching techniques and technology-enhanced learning.

More studies, maximum achievement

You'll learn in the most effective way – by developing skills in the classroom and applying them to real-world situations – and demonstrate what you've learned through engaging projects.

A specially-designed syllabus

Make maximum progress during your studies with a highly-structured syllabus that will have you speaking and writing with confidence.

Lessons are held in the morning and afternoon, blending classroom and technologically enhanced iLab learning.

Perfect for personalization

As our most popular program option EF's Intensive Program can be combined with other programs, including EF Internship or Volunteer Experience, providing you with the flexibility you need to make the most of your studies.

EF ACADEMIC YEAR ABROAD GENERAL

Build a wealth of knowledge to kick start your global future.

26 lessons of 40 min/week

16 General Language Lessons

4 iLab Language Lessons

4 Special Interest Lessons

2 Lecture Sessions

Level: Beginner to Advanced
Start date: January, April, June, September and November
Length: 6, 9 or 11 months

Description:

On our trusted General program, you'll learn both inside and outside the classroom as you combine language study with academic projects. Build a portfolio that demonstrates what you've learned and how you can apply it to the real world with a wide variety of classwork.

EF TWIN & TRIPLE CENTER

Discover a new language in two or three different destinations.

32/26 lessons of 40 min/week

16 General Language Lessons

4 iLab Language Lessons

10/4 Special Interest Lessons

2 Lecture Sessions

Level: Beginner to Advanced
Start date: January, April, June, September
Length: 9 months or more

Description:

Experience the ultimate adventure of traveling to two or three destinations to learn a language. You'll experience unique cultures while refining your language of study – whether it is for career, academic, or personal reasons. From the big city to an outdoor mecca, you decide the destinations you'd like to visit. Choose to refine your German, French or Spanish – on an Intensive or General Course.

EF MULTI- LANGUAGE YEAR

Learn up to three languages in three different countries.

32/26 lessons of 40 min/week

16 General Language Lessons

4 iLab Language Lessons

4/10 Special Interest Lessons

2 Lecture Sessions

Level: Beginner to Advanced
Start date: Every Monday, year round
Length: 9 months or more

Description:

Combine a world tour with learning up to three different languages. You choose how to divide your 36 weeks – so you can immerse in the cultures that fascinate you. Imagine studying in Asia's hottest capitals (Tokyo, Singapore, Beijing) or exploring your passion for art in the world's trendiest cities (Barcelona, Paris, Berlin). You design your experience abroad to globalize your future exactly how you want it to be.

EF UNIVERSITY FOUNDATION YEAR

Gain the skills you need to progress directly to an undergraduate program in a German-speaking country.

32 lessons of 40 min/week

16 General Language Lessons

4 iLab Language Lessons

10 Special Interest Lessons

2 Lecture Sessions

Level: Upper intermediate to Advanced
Start date: January or September
Length: 6, 9 or 11 months

Description:

EF-University Foundation Year is a six-, nine- or eleven-month program of study that helps you fulfill language and academic requirements for university entrance in a German-speaking country. Intended for high school graduates, this program bridges the gap between your previous education and what is expected of you at a university in a German-speaking country. Successful graduates of the program earn guaranteed admission to many German-speaking institutions. An additional year of secondary school studies (Studienkolleg) is required if you are seeking entrance to higher education in Germany but do not hold a high school diploma accepted by the university.



AT HOME IN THE WORLD

WE OFFER SIX DISTINCT ACCOMMODATION OPTIONS FOR YOU TO INTEGRATE WITH THE LOCAL CULTURE. WHETHER YOU CHOOSE TO STAY IN A HOMESTAY OR ON CAMPUS – YOU WILL EXPERIENCE QUALITY AND COMFORT.

HOMESTAY

Experience maximum cultural exchange by living with welcoming hosts in a private home. Gain insight into local culture, pick up expressions with greater ease and return home with a more authentic accent.

Enjoy breakfast and dinner with your hosts on weekdays, and all meals on the weekend. EF Homestays are typically in residential neighborhoods throughout the city, conveniently located near public transportation.

Homestay hosts are carefully selected and we connect with them regularly to ensure their home is suitable and our students are happy. Many EF Homestay Hosts have been welcoming our students for years.

Available in: All destinations

INTERNATIONAL HOMESHARE

Live alongside 5-10 students in a large home together with EF hosts. International Homeshares are selected based on our high standards for comfortable and safe independent living for our students abroad.

Available in: Rome

CAMPUS

Stay on-site, just steps from your classes. You'll experience a vibrant campus life while living alongside students from over 100 countries. Enjoy facilities such as a cafeteria, student lounge, Wi-Fi access, and more. Live-in EF staff are on call around the clock to ensure that your stay is comfortable.

Available in: Málaga, Playa Tamarindo





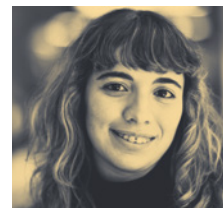
Live with students from around the globe



Experience top amenities and facilities



Enjoy a comfortable living environment



"My homestay hosts welcomed me as a member of their family from the first moment that we met."

MARIANGELA PAOLOZZI, ITALY

www.ef.com/language

RESIDENCE

Live in the heart of your destination city alongside EF students from over 100 countries. Enjoy easy access to your school by public transportation – as well as the city's shopping, restaurants and sport facilities. Residences vary, but often offer Wi-Fi internet access, meal plans and more.

Available in: Singapore, Berlin, Munich, Nice, Paris, Rome, Madrid, Barcelona, Beijing, Tokyo

APARTMENT

Gain more independence by living in an EF-selected apartment with easy access to your school via public transportation. You'll have the choice of your own room, or one shared with a fellow student. Either way, you'll get to know fellow EF classmates by sharing daily life with them – shopping for food, making your own meals and keeping the place tidy. All EF Apartments feature a communal bathroom, kitchen and living room. Many EF buildings boast on-site amenities like laundry rooms and pools.

Available in: Select destinations upon request

HOTEL

Enjoy the comfort, convenience and privacy of a full-service hotel. Every EF school offers conveniently located 2-star, 3-star and, in many cases, 4-star hotel options. Whichever you choose, you can expect a range of hotel amenities, including on-site restaurants, fitness facilities, laundry service – even swimming pools. Breakfast is often included, and you will arrange for other meals on your own.

Available in: All destinations upon request

EXPECT ADVENTURE

MAKE LANGUAGE PROGRESS WHILE HAVING A GREAT TIME WITH NEW FRIENDS FROM ALL OVER THE WORLD – WHETHER YOU'RE EXPLORING YOUR DESTINATION CITY, PLAYING SPORTS OR PERFORMING A KARAOKE DUET.

EF ACTIVITIES OFFICE

The heart of excitement in every EF school is the Activities Office. Enjoy a full calendar of events planned by your destination's Activities Coordinator – whether it's experiencing local culture with a city tour, meeting fellow classmates at an evening event, or taking a weekend excursion.





04



06



01

Get out there

Activities Coordinators share their insider secrets – all so you can experience the best of your destination.

02

Hit the beach

Go surfing or snorkeling in some of our sunniest destinations steps from the beach.

03

Stay in the game

Whether your sport is football, cricket or volleyball – you will find plenty of chances to play at EF.

04

Test your limits

Be as extreme as you want to be on EF activities like helicopter tours, surf lessons, and sailing.

05

Venture Out

Explore nearby towns, take a weekend trip or cruise the coast.

06

Eat local

Get a taste of your destination – from crêpes at a French restaurant to fresh sushi from a street stall in Tokyo.

07

Explore the city

Go beyond the popular hangouts to discover museums, concert venues, and shops off the beaten path.

08

Live like a local

Practice your new language skills at the family dinner table with your homestay hosts or in the corner café with the regulars.



05



07



08

PARIS

www.ef.com/pariscenter

Paris is one of the world's most stylish, romantic, and exciting cities. Little compares to its fabled bridges, majestic monuments and grand shopping boulevards. From our strikingly modern school just minutes from iconic Galeries Lafayette, you can shop your way through the Marais and end the day in a candlelit bistro. Practice your French while climbing the Eiffel Tower or visiting Mona Lisa at the Louvre.



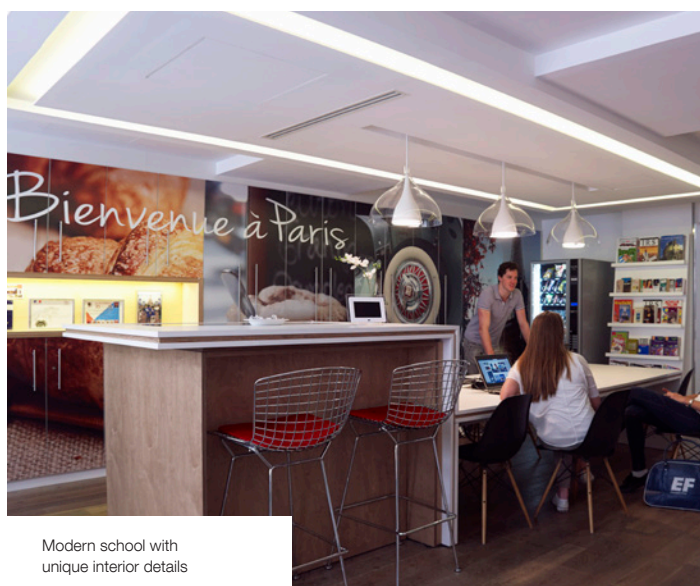
See more Instagram pictures from our students
#EFmoment in
#EFParis





About EF Paris

- Stately school located in the trendy 9th arrondissement
- Modern interior with the latest technology
- The only EF school to teach special French cooking classes in a professional, high-tech kitchen
- Organized excursions to Chateaux de la Loire, Disneyland Paris, Versailles, Nice, and Bretagne
- Close to the Metro system, making it easy to explore attractions including the Eiffel Tower, the Louvre, Sacré Coeur, and Arc de Triomphe
- Next to shops, cafés, museums, and theaters



Modern school with unique interior details



Geoffroy Marie Residence

Accommodation

EF Homestay (included): Twin room with a carefully selected local host. Breakfast and dinner Monday-Friday, all meals on weekends.

EF Residence – Geoffroy Marie: Triple/quad room from \$310/week. Twin room from \$350/week. En suite facilities. Breakfast included.



Geoffroy Marie Residence social area

EF Academic options

- EF Intensive: 32 lessons/week
- EF General: 26 lessons/week
- EF Basic: 20 lessons/week
- EF Exam Preparation (DELFI, DALF): 32 lessons/week
- EF Internship Program
- EF Academic Year Abroad

Course start dates:

- Weekly intakes, see p. 42

Included in the course

- 20, 26 or 32 French lessons of 40 minutes per week
- Twin room in EF Homestay
- Breakfast and dinner Monday-Friday and all meals on weekends in EF Homestay
- Digital learning media and academic materials
- Placement and progress tests
- EF Course Certificate
- Access to My EF upon enrollment
- Free Wi-Fi Internet access at EF School

Additional features available

- Flight arrangements
- Arrival transfer service from \$85
- Comprehensive travel & medical insurance coverage from \$89
- Single from \$45/week in EF Homestay
- Triple/quad from \$310/week or twin from \$350/week in EF Residence
- Activities, sports, and excursions at EF group rates

Course fee (\$)

Tuition, accommodation and meals included. Courses starting every Monday.

| Weeks | Basic | General | Intensive | Exam |
|-------|-------|---------|-----------|--------|
| 2 | 1 650 | 1 720 | 1 850 | |
| 3 | 2 475 | 2 580 | 2 775 | |
| 4 | 3 300 | 3 440 | 3 700 | |
| 5 | 4 125 | 4 300 | 4 625 | |
| 6 | 4 950 | 5 160 | 5 550 | |
| 8 | 6 600 | 6 880 | 7 400 | 7 480 |
| 10 | 8 080 | 8 420 | 9 060 | 9 160 |
| 12 | 9 560 | 9 960 | 10 720 | 10 840 |
| 16 | | 13 040 | 14 040 | 14 200 |
| 20 | | 16 120 | 17 360 | 17 560 |
| +1* | | 770 | 830 | 840 |

*each additional week after a minimum of 8 weeks

Summer supplement/wk (Jun-Aug)

EF Internship (8 wks)

Long term programmes

| | |
|------------------------------------|--------|
| Academic Year | 18 990 |
| Academic Semester | 14 490 |
| Intensive/Exam supplement per week | 40 |
| Multi-Language Year | 3 190 |

NICE

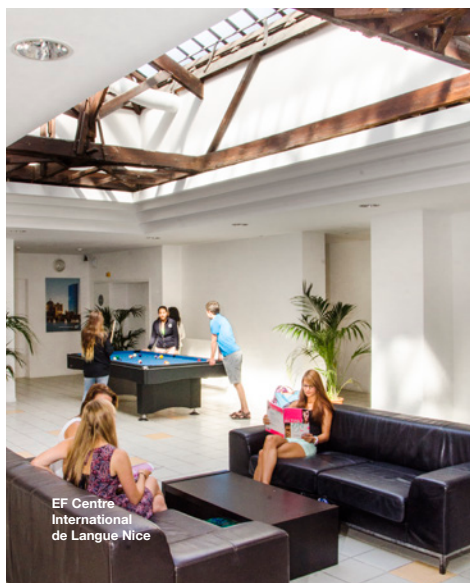
www.ef.com/nicecenter

Nice is a relaxed French Riviera resort town famous for its sunny skies, azure sea, elegant boutiques and Mediterranean cuisine. Enjoy perfect weather while you relax on the beach or stroll along the Promenade des Anglais. Our cozy school is a short walk from the seaside and breezy cafés on the Rue de France. On the weekends, students explore nearby hot spots like Cannes and Monaco.



See more Instagram pictures from our students
#EFmoment in
#EFNice





About EF Nice

- Great location - a 5 minute walk from Nice's famous beach
- Newly-renovated school featuring the latest learning technology
- Explore the nearby shops and cafés of Promenade des Anglais
- EF Nice was awarded the prestigious Label Qualité Français Langue Etrangère
- Organized excursions to Monaco, Antibes, Cannes, St. Tropez, etc.
- 10-minute walk to the lively Mediterranean city center



School located just a 5-minute walk from the beach



Le Scribe Residence



Estudines Residence Room

Accommodation

EF Homestay (included): Twin room with a carefully selected local host. Breakfast and dinner Monday-Friday, all meals on weekends.

EF Residence – Le Scribe: Twin room from \$160/week. En suite facilities. Self-catering.

EF Residence – Estudines: Twin room from \$105/week. Single room from \$160/week. En suite facilities. Self-catering.

EF Academic options

- EF Intensive: 32 lessons/week
- EF General: 26 lessons/week
- EF Basic: 20 lessons/week
- EF Exam Preparation (DELFI, DALF): 32 lessons/week
- EF Internship Program
- EF Academic Year Abroad

Course start dates:

- Weekly intakes, see p. 42

Included in the course

- 20, 26 or 32 French lessons of 40 minutes per week
- Twin room in EF Homestay
- Breakfast and dinner Monday-Friday and all meals on weekends in EF Homestay
- Digital learning media and academic materials
- Placement and progress tests
- EF Course Certificate
- Access to My EF upon enrollment
- Free Wi-Fi Internet access at EF School

Additional features available

- Flight arrangements
- Arrival transfer service from \$35
- Comprehensive travel & medical insurance coverage from \$89
- Single from \$45/week in EF Homestay
- Twin from \$105/week or single from \$160/week in EF Residence
- Activities, sports, and excursions at EF group rates

Course fee (\$)

Tuition, accommodation and meals included. Courses starting every Monday.

| Weeks | Basic | General | Intensive | Exam |
|-------|-------|---------|-----------|--------|
| 2 | 1 530 | 1 590 | 1 730 | |
| 3 | 2 295 | 2 385 | 2 595 | |
| 4 | 3 060 | 3 180 | 3 460 | |
| 5 | 3 825 | 3 975 | 4 325 | |
| 6 | 4 590 | 4 770 | 5 190 | |
| 8 | 6 120 | 6 360 | 6 920 | 7 000 |
| 10 | 7 500 | 7 800 | 8 480 | 8 580 |
| 12 | 8 880 | 9 240 | 10 040 | 10 160 |
| 16 | | 12 120 | 13 160 | 13 320 |
| 20 | | 15 000 | 16 280 | 16 480 |
| +1* | | 720 | 780 | 790 |

*each additional week after a minimum of 8 weeks
 Summer supplement/wk (Jun-Aug) 45
 EF Internship (8 wks) 7 090

Long term programmes

| | |
|------------------------------------|--------|
| Academic Year | 17 990 |
| Academic Semester | 13 990 |
| Intensive/Exam supplement per week | 40 |
| Multi-Language Year | 2 990 |

PLAYA TAMARINDO

www.ef.com/tamarindocenter

Playa Tamarindo is one of the world's top eco-tourism destinations, and students at our centrally located school make the most of its stunning surf beaches, lush wildlife, and stylish village. Housed in a former resort hotel, our intimate center has a private pool and easy access to canopy tours, rainforest waterfalls and the leatherback turtle nesting grounds of Parque Nacional Marino Las Baulas.



EF International
Language Centre
Playa Tamarindo



See more Instagram
pictures from our students
#EFmoment in
#EFPlayaTamarindo





About EF Playa Tamarindo

- Unique location in a colonial style building bordering lush forest with exotic wildlife
- Bright classrooms with the latest teaching technology
- On-campus residence with private swimming pool and sun deck
- Horse riding, canopy tours, organized excursions to Rio Celeste, Catamaran, Arenal Volcano, Nicaragua, etc.
- 5-minute walk to the beach, shops, markets, and nightlife



Private outdoor swimming pool located on school grounds



Casa Papaya Residence pool



Casa Papaya Residence room

Accommodation

EF Homestay (included): Twin room with a carefully selected local host. Breakfast and dinner Monday-Friday, all meals on weekends.

EF Campus – International House: Triple/quad room from \$45/week. Twin room from \$90/week. Shared facilities. Self-catering.

EF Residence – Casa Papaya: Twin room from \$70/week. Single room from \$225/week. Shared facilities. Self-catering.

EF Residence – Casa Eleri: Twin room from \$55/week. Single room from \$145/week. Shared facilities. Self-catering.

EF Academic options

- EF Intensive: 32 lessons/week
- EF General: 26 lessons/week
- EF Basic: 20 lessons/week
- EF Exam Preparation (DELE): 32 lessons/week
- EF Internship Program
- EF Academic Year Abroad

Course start dates:

- Weekly intakes, see p. 42

Included in the course

- 20, 26 or 32 Spanish lessons of 40 minutes per week
- Twin room in EF Homestay
- Breakfast and dinner Monday-Friday and all meals on weekends in EF Homestay
- Daily transfer between EF Homestay and EF School
- Digital learning media and academic materials
- Placement and progress tests
- EF Course Certificate
- Access to My EF upon enrollment
- Free Wi-Fi Internet access at EF School

Additional features available

- Flight arrangements
- Arrival transfer service \$200 (San José) or \$70 (Liberia)
- Comprehensive travel & medical insurance coverage from \$89
- Single from \$45/week in EF Homestay
- Triple/quad from \$45/week or twin from \$90/week in EF Campus
- Activities, sports and excursions at EF group rates

Course fee (\$)

Tuition, accommodation and meals included. Courses starting every Monday.

| Weeks | Basic | General | Intensive | Exam |
|-------|-------|---------|-----------|--------|
| 2 | 1 110 | 1 170 | 1 320 | |
| 3 | 1 665 | 1 755 | 1 980 | |
| 4 | 2 220 | 2 340 | 2 640 | |
| 5 | 2 775 | 2 925 | 3 300 | |
| 6 | 3 330 | 3 510 | 3 960 | |
| 8 | 4 440 | 4 680 | 5 280 | 5 360 |
| 10 | 5 440 | 5 740 | 6 460 | 6 560 |
| 12 | 6 440 | 6 800 | 7 640 | 7 760 |
| 16 | | 8 920 | 10 000 | 10 160 |
| 20 | | 11 040 | 12 360 | 12 560 |
| +1* | | 530 | 590 | 600 |

*each additional week after a minimum of 8 weeks
Summer supplement/wk (Jun-Aug) 45
EF Internship (8 wks) 5 430

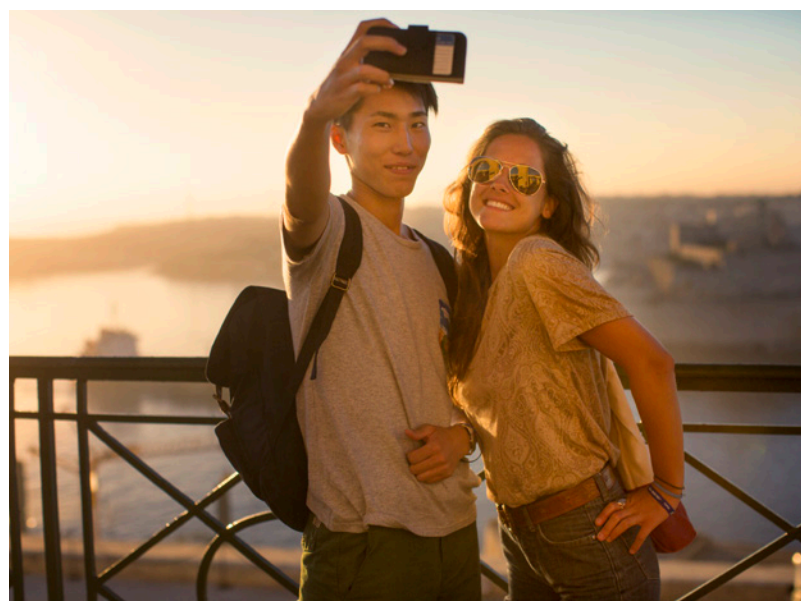
Long term programmes

| | |
|------------------------------------|--------|
| Academic Year | 14 990 |
| Academic Semester | 11 490 |
| Intensive/Exam supplement per week | 40 |
| Multi-Language Year | 2 490 |

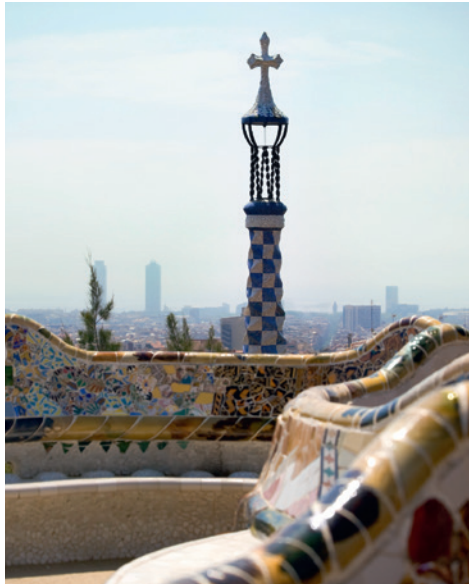
BARCELONA

www.ef.com/barcelonacenter

Barcelona is one of Europe's most vibrant destinations, set between pristine beaches, and dramatic mountain ranges. This colorful city has exuberant nightlife, amazing food and a flamboyant fashion scene. Animated Spanish is spoken in Gothic Quarter tapas bars and in the shadows of breathtaking Sagrada Familia Cathedral. Our sleek, contemporary school in the hip Eixample district has a sunny outdoor terrace.

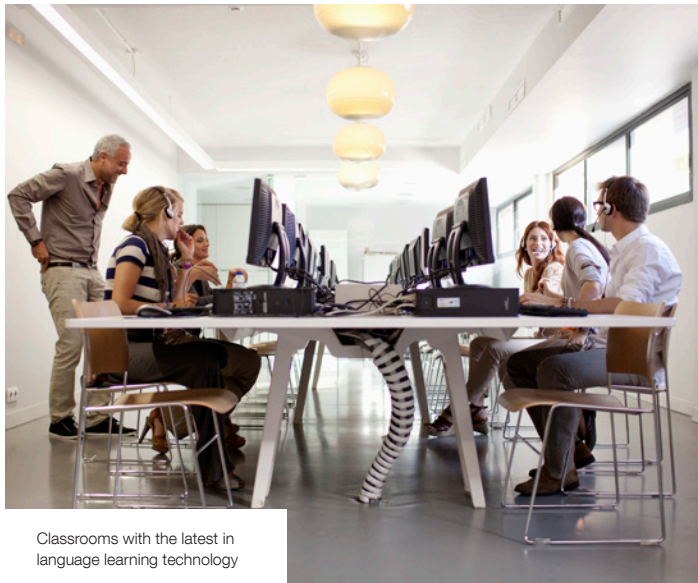


See more Instagram pictures from our students
#EFmoment in
#EFBarcelona



About EF Barcelona

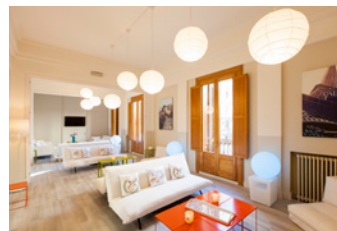
- Modern school located in the lively Eixample district
- Spacious outdoor terrace with seating, and sun loungers
- Sleek, modern interior with state-of-the-art fittings
- Tapas evenings, Dali Museum tours, organized excursions to Montserrat, Madrid, Andorra, and Costa Brava
- 4-minute walk from vibrant shops, restaurants and art galleries
- Close to Diagonal Metro station, just two stops from the famous Sagrada Família



Classrooms with the latest in language learning technology



Anna Ravell Residence social space



Cataluña Residence social space

Accommodation

EF Homestay (included): Twin room with a carefully selected local host. Breakfast and dinner Monday-Friday, all meals on weekends.

EF Residence – Anna Ravell: Single room from \$190/week. Shared facilities. Breakfast included.

EF Residence – Cataluña: Twin room from \$140/week. Single room from \$150/week. Shared facilities. Breakfast included.

EF Academic options

- EF Intensive: 32 lessons/week
- EF General: 26 lessons/week
- EF Basic: 20 lessons/week
- EF Exam Preparation (DELE, GCSE Spanish Exam, A-Level Spanish Exam): 32 lessons/week
- EF Internship Program
- EF Academic Year Abroad

Course start dates:

- Weekly intakes, see p. 42

Included in the course

- 20, 26 or 32 Spanish lessons of 40 minutes per week
- Twin room in EF Homestay
- Breakfast and dinner Monday-Friday and all meals on weekends in EF Homestay
- Digital learning media and academic materials
- Placement and progress tests
- EF Course Certificate
- Access to My EF upon enrollment
- Free Wi-Fi Internet access at EF School

Additional features available

- Flight arrangements
- Arrival transfer service from \$55
- Comprehensive travel & medical insurance coverage from \$89
- Single from \$45/week in EF Homestay
- Twin from \$120/week or single from \$190/week in EF Residence
- Activities, sports and excursions at EF group rates

Course fee (\$)

Tuition, accommodation and meals included. Courses starting every Monday.

| Weeks | Basic | General | Intensive | Exam |
|-------|-------|---------|-----------|--------|
| 2 | 1 290 | 1 390 | 1 510 | |
| 3 | 1 935 | 2 085 | 2 265 | |
| 4 | 2 580 | 2 780 | 3 020 | |
| 5 | 3 225 | 3 475 | 3 775 | |
| 6 | 3 870 | 4 170 | 4 530 | |
| 8 | 5 160 | 5 560 | 6 040 | 6 120 |
| 10 | 6 320 | 6 820 | 7 400 | 7 500 |
| 12 | 7 480 | 8 080 | 8 760 | 8 880 |
| 16 | | 10 600 | 11 480 | 11 640 |
| 20 | | 13 120 | 14 200 | 14 400 |
| +1* | | 630 | 680 | 690 |

*each additional week after a minimum of 8 weeks
Summer supplement/wk (Jun-Aug) 45
EF Internship (8 wks) 6 250

Long term programmes

| | |
|------------------------------------|--------|
| Academic Year | 17 990 |
| Academic Semester | 13 490 |
| Intensive/Exam supplement per week | 40 |
| Multi-Language Year | 2 990 |

MALAGA

www.ef.com/malagacenter

Malaga is the birthplace of Pablo Picasso, and its Mediterranean beaches and palm-lined boulevards make an inspiring backdrop for your Spanish studies. Our center is in the postcard-perfect village of Pedregalejo, steps from the sea and a promenade lined with the best restaurants in Spain's Costa Del Sol. From our Mediterranean villa it's a short jaunt to the chic shops and colorful clubs of the Calle Larios pedestrian area.



Spanish villa-style school with modern interior



About EF Malaga

- Intimate, Mediterranean villa-style school has gardens with citrus trees
- A short walk from famous beach lined with restaurants and shops
- In the scenic village of Pedregalejo, where the city's best seafood cafés can be found
- On-campus residence available
- Horseback riding, salsa lessons organized trips to Morocco, Cordoba, etc.

Accommodation

EF Homestay (included): Twin room with a carefully selected local host. Breakfast and dinner Monday-Friday, all meals on weekends.

EF Campus – International House: Triple/quad room included September-May, \$95/week June- August. Single room from \$300/week. En suite facilities. Breakfast Monday-Friday.

EF Academic options

- EF Intensive: 32 lessons/week
- EF General: 26 lessons/week
- EF Basic: 20 lessons/week
- EF Exam Preparation (DELE): 32 lessons/week
- EF Internship Programs
- EF Academic Year Abroad

Course start dates:

- Weekly intakes, see p. 42

Included in the course

- 20, 26 or 32 Spanish lessons of 40 minutes per week
- Twin room in EF Homestay or triple/quad room in EF Campus (September-May only)
- Breakfast and dinner Monday-Friday and all meals on weekends in EF Homestay or breakfast on EF Campus (September-May only)
- Digital learning media and academic materials
- Placement and progress tests
- EF Course Certificate
- Access to My EF upon enrollment
- Free Wi-Fi Internet access at EF School

Additional features available

- Flight arrangements
- Arrival transfer service from \$35
- Comprehensive travel & medical insurance coverage from \$89
- Single from \$45/week in EF Homestay
- Triple/quad from \$95/week (Jun-August) or single from \$300/week in EF Campus
- Activities, sports, and excursions at EF group rates

Course fee (\$)

Tuition, accommodation and meals included. Courses starting every Monday.

| Weeks | Basic | General | Intensive | Exam |
|-------|-------|---------|-----------|--------|
| 2 | 1 230 | 1 290 | 1 430 | |
| 3 | 1 845 | 1 935 | 2 145 | |
| 4 | 2 460 | 2 580 | 2 860 | |
| 5 | 3 075 | 3 225 | 3 575 | |
| 6 | 3 690 | 3 870 | 4 290 | |
| 8 | 4 920 | 5 160 | 5 720 | 5 800 |
| 10 | 6 020 | 6 320 | 7 000 | 7 100 |
| 12 | 7 120 | 7 480 | 8 280 | 8 400 |
| 16 | | 9 800 | 10 840 | 11 000 |
| 20 | | 12 120 | 13 400 | 13 600 |
| +1* | | 580 | 640 | 650 |

*each additional week after a minimum of 5 weeks

Summer supplement/wk (Jun-Aug) 45
EF Internship (8 wks) 5 890

Long term programmes

| | |
|------------------------------------|--------|
| Academic Year | 17 990 |
| Academic Semester | 13 490 |
| Intensive/Exam supplement per week | 40 |
| Multi-Language Year | 2 990 |

MADRID

www.ef.com/madridcenter

Madrid's locals are famously friendly and open-minded, and you will feel the city's welcoming spirit in Calle de Serrano boutiques and in the crowded clubs and cafés around Plaza Mayor. Spain's capital will awe you with the masterpieces in El Museo del Prado and entertain you with its famous nightlife and beloved soccer club (Real Madrid). Our modern school is ideally located in the stylish Salamanca district.



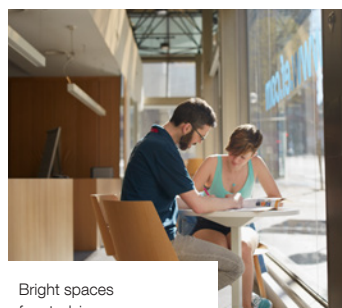
About EF Madrid

- Modernized building with a great location in the city center
- Large outdoor 'urban garden' area with a ping pong table, foosball table, and mini golf
- Recently renovated classrooms fitted with top technology
- Public transportation stop conveniently located near the school
- Tapas and sangria nights
- Organized excursions to Barcelona, Valencia, Sevilla, Pamplona, Granada, etc.
- 5-minute walk from shops, restaurants, cafés and nightlife

Accommodation

EF Homestay (included): Twin room with a carefully selected local host. Breakfast and dinner Monday-Friday, all meals on weekends.

EF Residence – Togumar: Triple/quad room from \$80/week. Twin room from \$130/week. Single room from \$295/week. En suite facilities. Self-catering.



EF Academic options

- EF Intensive: 32 lessons/week
- EF General: 26 lessons/week
- EF Basic: 20 lessons/week
- EF Spanish for Business: 32 lessons/week
- EF Exam Preparation (DELE): 32 lessons/week
- EF Internship Program
- EF Academic Year Abroad

Course start dates:

- Weekly intakes, see p. 42

Included in the course

- 20, 26 or 32 Spanish lessons of 40 minutes per week
- Twin room in EF Homestay
- Breakfast and dinner Monday-Friday and all meals on weekends in EF Homestay
- Digital learning media and academic materials
- Placement and progress tests
- EF Course Certificate
- Access to My EF upon enrollment
- Free Wi-Fi Internet access at EF School

Additional features available

- Flight arrangements
- Arrival transfer service from \$60
- Comprehensive travel & medical insurance coverage from \$89
- Single from \$45/week in EF Homestay
- Triple/quad from \$80/week or twin from \$130/week in EF Residence
- Activities, sports and excursions at EF group rates

Course fee (\$)

Tuition, accommodation and meals included. Courses starting every Monday.

| Weeks | Basic | General | Intensive | Exam |
|-------|-------|---------|-----------|--------|
| 2 | 1 290 | 1 390 | 1 510 | |
| 3 | 1 935 | 2 085 | 2 265 | |
| 4 | 2 580 | 2 780 | 3 020 | |
| 5 | 3 225 | 3 475 | 3 775 | |
| 6 | 3 870 | 4 170 | 4 530 | |
| 8 | 5 160 | 5 560 | 6 040 | 6 120 |
| 10 | 6 320 | 6 820 | 7 400 | 7 500 |
| 12 | 7 480 | 8 080 | 8 760 | 8 880 |
| 16 | | 10 600 | 11 480 | 11 640 |
| 20 | | 13 120 | 14 200 | 14 400 |
| +1* | | 630 | 680 | 690 |

*each additional week after a minimum of 8 weeks

Summer supplement/wk (June-August) 45

EF Internship (8 weeks) 6 250

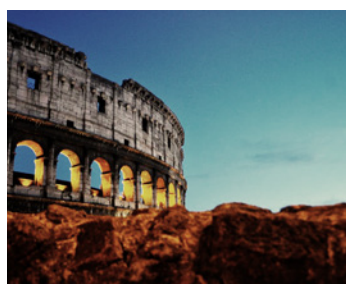
Long term programmes

| | |
|------------------------------------|--------|
| Academic Year | 17 990 |
| Academic Semester | 13 490 |
| Intensive/Exam supplement per week | 40 |
| Multi-Language Year | 2 990 |

ROME

www.ef.com/romecenter

In Italy's "Eternal City," ancient landmarks like the Colosseum and Pantheon are part of a vivid modern landscape where commuters ride Vespas, espresso bars are on every corner, and backstreet trattorias serve world-class Italian cuisine. Shop the latest trends in the boutiques of Via Condotti, have a meal to remember in the trendy Trastevere district, then linger over gelato on Piazza Navona. EF is in the heart of it all.



See more Instagram pictures from our students
#EFmoment in
#EFRome

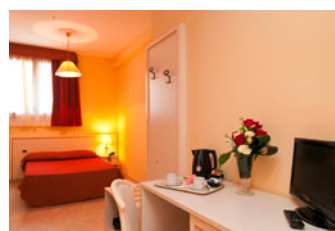


About EF Rome

- Located in the center of one of the most historic areas of Rome
- Spacious classrooms, a library and student lounge
- Organized excursions to Florence, Naples or Capri
- Nearby attractions include Piazza di Spagna, Colosseum, Piazza del Popolo and Fontana di Trevi
- 2-minute walk to cafés, restaurants, shops and transport



Bright and modern interior for meeting new friends



Villa Rosa Residence room



Villa Rosa Residence patio

Accommodation

EF Homestay (included): Twin room with a carefully selected local host. Breakfast and dinner Monday-Friday, all meals on weekends.

EF International Homeshare (included): Quad room with shared facilities. Half board Monday-Friday, all meals on weekends.

EF Residence – Villa Rosa: Twin room from \$120/week. Single room from \$170/week. En suite facilities. Breakfast included.

EF Academic options

- EF Intensive: 32 lessons/week
- EF General: 26 lessons/week
- EF Basic: 20 lessons/week
- Italian for Business: 32 lessons/week
- EF Exam Preparation (CILS and CELI): 32 lessons/week
- EF Internship Program
- EF Academic Year Abroad

Course start dates:

- Weekly intakes, see p. 42

Included in the course

- 20, 26 or 32 Italian lessons of 40 minutes per week
- Twin room in EF Homestay
- Breakfast and dinner Monday-Friday and all meals on weekends in EF Homestay
- Digital learning media and academic materials
- Placement and progress tests
- EF Course Certificate
- Access to My EF upon enrollment
- Free Wi-Fi Internet access at EF School

Additional features available

- Flight arrangements
- Arrival transfer service from \$55
- Comprehensive travel & medical insurance coverage from \$89
- Single from \$45/week in EF Homestay
- Twin from \$120/week or single from \$170/week in EF Residence
- Activities, sports and excursions at EF group rates

Course fee (\$)

Tuition, accommodation and meals included. Courses starting every Monday.

| Weeks | Basic | General | Intensive | Exam |
|-------|-------|---------|-----------|--------|
| 2 | 1 530 | 1 570 | 1 730 | |
| 3 | 2 295 | 2 355 | 2 595 | |
| 4 | 3 060 | 3 140 | 3 460 | |
| 5 | 3 825 | 3 925 | 4 325 | |
| 6 | 4 590 | 4 710 | 5 190 | |
| 8 | 6 120 | 6 280 | 6 920 | 7 000 |
| 10 | 7 500 | 7 700 | 8 480 | 8 580 |
| 12 | 8 880 | 9 120 | 10 040 | 10 160 |
| 16 | | 11 960 | 13 160 | 13 320 |
| 20 | | 14 800 | 16 280 | 16 480 |
| +1* | | 710 | 780 | 790 |

*each additional week after a minimum of 8 weeks
 Summer supplement/wk (June-August)

45

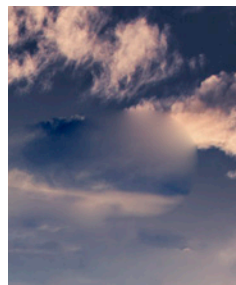
Long term programmes

| | |
|------------------------------------|--------|
| Academic Year | 18 990 |
| Academic Semester | 14 990 |
| Intensive/Exam supplement per week | 40 |
| Multi-Language Year | 3 190 |

BERLIN

www.ef.com/berlincenter

From the Charlottenburg Palace to the Brandenburg Gate, Berlin boasts a dynamic history that has shaped it to be a cultural hub. Artists flock to its underground creative scene, foodies abound for a world-class culinary experience, and students gather for a fast-paced, yet understated culture. Experience it all from our school located in the heart of Germany's capital city.



About EF Berlin

- Completely renovated historic building located in the city center near Postdamer Platz
- Modern classrooms with the latest learning technology
- Large outdoor terrace for BBQs
- Walking distance to cafés, restaurants, nightlife, and theaters and shops
- 5-minute walk to the nearest public transportation stop



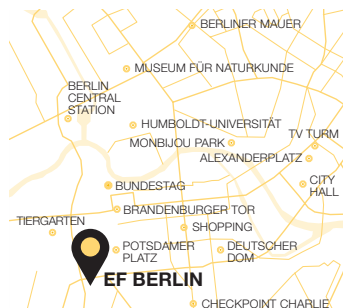
Accommodation

EF Homestay (included): Twin room with a carefully selected local host. Breakfast and dinner Monday-Friday, all meals on weekends.

EF Residence – Brandenburger Tor:
Twin room from \$95/week. Single room \$310/week. Shared facilities. Self-catering.



Organized cultural excursions



EF Academic options

- EF Intensive: 32 lessons/week
- EF General: 26 lessons/week
- EF Basic: 20 lessons/week
- EF Exam Preparation (Goethe-Zertifikat, Test DaF): 32 lessons/week
- EF Internship Program
- EF Academic Year Abroad

Course start dates:

- Weekly intakes, see p. 42

Included in the course

- 20, 26 or 32 German lessons of 40 minutes per week
- Twin room in EF Homestay
- Breakfast and dinner Monday-Friday and all meals on weekends in EF Homestay
- Digital learning media and academic materials
- Placement and progress tests
- EF Course Certificate
- Access to My EF upon enrollment
- Free Wi-Fi Internet access at EF School

Additional features available

- Flight arrangements
- Arrival transfer service from \$55
- Comprehensive travel & medical insurance coverage from \$89
- Single from \$45/week in EF Homestay
- Twin from \$95/week in EF Residence
- Activities, sports and excursions at EF group rates

Course fee (\$)

Tuition, accommodation and meals included. Courses starting every Monday.

| Weeks | Basic | General | Intensive | Exam |
|-------|-------|---------|-----------|--------|
| 2 | 1 450 | 1 530 | 1 630 | |
| 3 | 2 175 | 2 295 | 2 445 | |
| 4 | 2 900 | 3 060 | 3 260 | |
| 5 | 3 625 | 3 825 | 4 075 | |
| 6 | 4 350 | 4 590 | 4 890 | |
| 8 | 5 800 | 6 120 | 6 520 | 6 600 |
| 10 | 7 100 | 7 500 | 7 980 | 8 080 |
| 12 | 8 400 | 8 880 | 9 440 | 9 560 |
| 16 | | 11 640 | 12 360 | 12 520 |
| 20 | | 14 400 | 15 280 | 15 480 |
| +1* | | 690 | 730 | 740 |

*each additional week after a minimum of 8 weeks

Summer supplement/wk (Jun-Aug) 45

EF Internship (8 wks) 6 770

Long term programmes

| | |
|------------------------------------|--------|
| Academic Year | 18 490 |
| Academic Semester | 14 990 |
| Intensive/Exam supplement per week | 40 |
| Multi-Language Year | 3 090 |

MUNICH

www.ef.com/munichcenter

"Munich loves you" is the motto of the idyllic Bavarian capital, where businessmen bike to work and there's a beer garden on every block. A welcoming place to study German, our Munich school is in the medieval Altstadt-Lehel district, blocks from the iconic Marienplatz and the lavish landscape of the Englischer Garten. A one-hour train ride brings you to the ski resorts and hiking trails of the Alps.



About EF Munich

- Located in the Lehel District just a 5- minute walk from the city center
- Intimate, recently renovated, building fitted with bright classrooms and computer lab
- Walking distance from downtown's museums, theaters, and entertainment
- Ski the Bavarian Alps, just one hour away by train

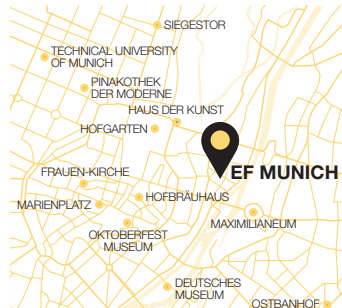
Accommodation

EF Homestay (included): Twin room with a carefully selected local host. Breakfast and dinner Monday-Friday, all meals on weekends.

EF Residence – Haus International:
Triple/quad from \$190/week. Twin room from \$270/week. Shared facilities. Self-catering.



Comfortable space for socializing



EF Academic options

- EF Intensive: 32 lessons/week
- EF General: 26 lessons/week
- EF Basic: 20 lessons/week
- EF Exam Preparation (Goethe-Zertifikat, Test DaF): 32 lessons/week
- EF Internship Program
- EF Academic Year Abroad

Course start dates:

- Weekly intakes, see p. 42

Included in the course

- 20, 26 or 32 German lessons of 40 minutes per week
- Twin room in EF Homestay
- Breakfast and dinner Monday-Friday and all meals on weekends in EF Homestay
- Digital learning media and academic materials
- Placement and progress tests
- EF Course Certificate
- Access to My EF upon enrollment
- Free Wi-Fi Internet access at EF School

Additional features available

- Flight arrangements
- Arrival transfer service from \$100
- Comprehensive travel & medical insurance coverage from \$89
- Single from \$45/week in EF Homestay
- Triple/quad from \$190/week, twin from \$270/week or single from \$380/week in EF Residence
- Activities, sports and excursions at EF group rates

Course fee (\$)

Tuition, accommodation and meals included. Courses starting every Monday.

| Weeks | Basic | General | Intensive | Exam |
|-------|-------|---------|-----------|--------|
| 2 | 1 510 | 1 570 | 1 710 | |
| 3 | 2 265 | 2 355 | 2 565 | |
| 4 | 3 020 | 3 140 | 3 420 | |
| 5 | 3 775 | 3 925 | 4 275 | |
| 6 | 4 530 | 4 710 | 5 130 | |
| 8 | 6 040 | 6 280 | 6 840 | 6 920 |
| 10 | 7 400 | 7 700 | 8 380 | 8 480 |
| 12 | 8 760 | 9 120 | 9 920 | 10 040 |
| 16 | | 11 960 | 13 000 | 13 160 |
| 20 | | 14 800 | 16 080 | 16 280 |
| +1* | | 710 | 770 | 780 |

*each additional week after a minimum of 8 weeks
Summer supplement/wk (Jun-Aug) 45
EF Internship (8 wks) 6 770

Long term programmes

| | |
|------------------------------------|--------|
| Academic Year | 18 990 |
| Academic Semester | 14 990 |
| Intensive/Exam supplement per week | 40 |
| Multi-Language Year | 3 190 |

SINGAPORE

www.ef.com/singaporecenter

Singapore is an island, a city and a country – and a fascinating destination rich in culture, art and cuisine. With a British colonial past, this Asian metropolis combines the best of East and West and is an inspiring place to learn Mandarin Chinese. Browse the shops of Orchard Road or relax at a trendy café in Clarke Quay. Our downtown school is a cable car ride away from the island resort of Sentosa.



About EF Singapore

- School located in a stylish building in central Singapore
- Modern interior features latest learning technology
- Spacious rooftop terrace offers fantastic views of the city
- Hiking tours and excursions to Bintan Island and Kuala Lumpur
- Nearby attractions include Clarke Quay, Chinatown and the Esplanade
- 2-minute walk to shops, bars, and cafés



Accommodation

EF Homestay (included): Twin room with a carefully selected local host. Breakfast and dinner Monday-Friday, all meals on weekends.

EF Residence – Terra Residence: Twin room from \$195/week. En suite facilities. Self-catering.

EF Residence – Bunc: Triple/quad room from \$115/week. Shared facilities. Breakfast included.



Take a 360°
school tour online



EF Academic options

- EF Intensive: 32 lessons/week
- EF General: 26 lessons/week
- EF Basic: 20 lessons/week
- EF Academic Year Abroad

Course start dates:

- Weekly intakes, see p. 42

Included in the course

- 20, 26 or 32 Mandarin lessons of 40 minutes per week
- Twin room in EF Homestay
- Breakfast and dinner Monday-Friday and all meals on weekends in EF Homestay
- Digital learning media and academic materials
- Placement and progress tests
- EF Course Certificate
- Access to My EF upon enrollment
- Free Wi-Fi Internet access at EF School

Additional features available

- Flight arrangements
- Arrival transfer service from \$40
- Comprehensive travel & medical insurance coverage from \$89
- Single from \$45/week in EF Homestay
- Triple/quad from \$115/week or twin from \$195/week in EF Residence
- Activities, sports and excursions at EF group rates

Course fee (\$)

Tuition, accommodation and meals included. Courses starting every Monday.

| Weeks | Basic | General | Intensive |
|-------|-------|---------|-----------|
| 2 | 1 130 | 1 190 | 1 290 |
| 3 | 1 695 | 1 785 | 1 935 |
| 4 | 2 260 | 2 380 | 2 580 |
| 5 | 2 825 | 2 975 | 3 225 |
| 6 | 3 390 | 3 570 | 3 870 |
| 8 | 4 520 | 4 760 | 5 160 |
| 10 | 5 540 | 5 840 | 6 320 |
| 12 | 6 560 | 6 920 | 7 480 |
| 16 | | 9 080 | 9 800 |
| 20 | | 11 240 | 12 120 |
| +1* | | 540 | 580 |

*each additional week after a minimum of 8 weeks
Summer supplement/wk (Jun-Aug)

45

Long term programmes

| | |
|------------------------------------|--------|
| Academic Year | 14 490 |
| Academic Semester | 12 290 |
| Intensive/Exam supplement per week | 40 |
| Multi-Language Year | 2 490 |

BEIJING

www.ef.com/beijingcenter

Beijing is a city of exhilarating contrasts, from the epic scale of its imperial palaces to the intimate charm of the Hutong alleyways. A recent boom in visionary architecture has confirmed its status as a breathlessly modern capital, but you'll find echoes of ancient dynasties on every street. Immerse yourself in Mandarin while exploring iconic sites like the Temple of Heaven and the Forbidden City.



EF International
Language Center
Beijing

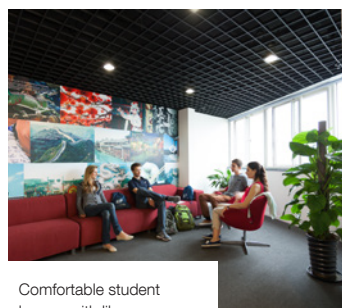
About EF Beijing

- Inviting traditional school located near Olympic Park
- Bright and modern classrooms fitted with the latest learning technology
- Practice Mandarin with locals at the community center – steps from the school
- Organized excursions to Shaolin Temple, Xi'an, the Great Wall, etc.
- 5-minute walk to public transportation; easy access to shopping and entertainment in central Beijing

Accommodation

EF Homestay (included): Single room with a carefully selected local host. Breakfast and dinner Monday-Friday and all meals on weekends.

EF Residence – HuiYuan: Twin room from \$135/week. Shared facilities. Self-catering.



Comfortable student
lounge with library



EF Academic options

- EF Intensive: 32 lessons/week
- EF General: 26 lessons/week
- EF Basic: 20 lessons/week
- EF Exam Preparation (Hanyu, Shuiping Kaoshi - HSK): 32 lessons/week
- EF Internship Program
- EF Academic Year Abroad

Course start dates:

- Weekly intakes, see p. 42

Included in the course

- 20, 26 or 32 Mandarin lessons of 40 minutes per week
- Single room in EF Homestay
- Breakfast and dinner Monday-Friday and all meals on weekends in EF Homestay
- Digital learning media and academic materials
- Placement and progress tests
- EF Course Certificate
- Access to My EF upon enrollment
- Free Wi-Fi Internet access at EF School

Additional features available

- Flight arrangements
- Arrival transfer service from \$50
- Comprehensive travel & medical insurance coverage from \$89
- Twin from \$135/week in EF Residence
- Activities, sports and excursions at EF group rates

Course fee (\$)

Tuition, accommodation and meals included. Courses starting every Monday.

| Weeks | Basic | General | Intensive | Exam |
|-------|-------|---------|-----------|--------|
| 2 | 1 190 | 1 240 | 1 370 | |
| 3 | 1 785 | 1 860 | 2 055 | |
| 4 | 2 380 | 2 480 | 2 740 | |
| 5 | 2 975 | 3 100 | 3 425 | |
| 6 | 3 570 | 3 720 | 4 110 | |
| 8 | 4 760 | 4 960 | 5 480 | 5 560 |
| 10 | 5 840 | 6 080 | 6 720 | 6 820 |
| 12 | 6 920 | 7 200 | 7 960 | 8 080 |
| 16 | | 9 440 | 10 440 | 10 600 |
| 20 | | 11 680 | 12 920 | 13 120 |
| +1* | | 560 | 620 | 630 |

*each additional week after a minimum of 8 weeks

Summer supplement/wk (Jun-Aug)

45

EF Internship (8 wks)

5 670

Long term programmes

| | |
|------------------------------------|--------|
| Academic Year | 15 990 |
| Academic Semester | 12 290 |
| Intensive/Exam supplement per week | 40 |
| Multi-Language Year | 2 690 |

TOKYO

www.ef.com/tokyo-center

Tokyo's soaring skyline and manic pop culture can make it seem like a city out of science fiction, but at street level Japan's economic capital is vividly traditional. Shinto shrines and the Imperial Palace mingle with karaoke clubs and manga conventions. You can practice Japanese with friendly locals in the trendy shops and sushi bars of the Shibuya District, where our comfortable school is located.



EF International
Language Center
Tokyo



See more Instagram
pictures from our students
#EFmoment in
#EFTokyo





About EF Tokyo

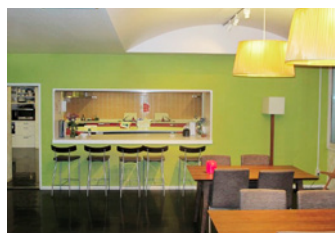
- Modern school located in the popular Shibuya area
- Bright and modern classrooms with beautiful view of the Tokyo skyline
- Classes in Japanese culture, history, and manga
- Opportunities to practice Japanese with local students
- Ghibli Museum tours, excursions to Kyoto, Nikko, Mount Fuji, etc.
- Restaurants, cafes, shops and arcades surround the school
- Excellent transportation network



Classrooms feature sweeping views of Tokyo's skyline



Comfort Tama Plaza Residence



Comfort Tama Plaza Residence

Accommodation

EF Homestay (included): Single room with a carefully selected local host. Breakfast and dinner Monday-Friday, all meals on weekends.

EF Residence – Social Residence Tama Plaza: Twin room from \$30/week. Single room from \$155/week. Shared facilities. Self-catering.

EF Academic options

- EF Intensive: 32 lessons/week
- EF General: 26 lessons/week
- EF Basic: 20 lessons/week
- EF Exam Preparation (JLPT levels N3-N5): 32 lessons/week
- EF Academic Semester Abroad

Course start dates:

- Weekly intakes, see p. 42

Included in the course

- 20, 26 or 32 Japanese lessons of 40 minutes per week
- Single room in EF Homestay
- Breakfast and dinner Monday-Friday and all meals on weekends in EF Homestay
- Digital learning media and academic materials
- Placement and progress tests
- EF Course Certificate
- Access to My EF upon enrollment
- Free Wi-Fi Internet access at EF School

Additional features available

- Flight arrangements
- Arrival transfer service from \$140
- Comprehensive travel & medical insurance coverage from \$89
- Twin from \$30/week or single from \$155/week in EF Residence
- Activities, sports and excursions at EF group rates

Course fee (\$)

Tuition, accommodation and meals included. Courses starting every Monday.

| Weeks | Basic | General | Intensive | Exam |
|-------|-------|---------|-----------|--------|
| 2 | 1 590 | 1 670 | 1 790 | |
| 3 | 2 385 | 2 505 | 2 685 | |
| 4 | 3 180 | 3 340 | 3 580 | |
| 5 | 3 975 | 4 175 | 4 475 | |
| 6 | 4 770 | 5 010 | 5 370 | |
| 8 | 6 360 | 6 680 | 7 160 | 7 280 |
| 10 | 7 800 | 8 180 | 8 780 | 8 920 |
| 12 | 9 240 | 9 680 | 10 400 | 10 560 |
| 16 | | 12 680 | 13 640 | 13 840 |
| 20 | | 15 680 | 16 880 | 17 120 |
| +1* | | 750 | 810 | 820 |

*each additional week after a minimum of 8 weeks
Summer supplement/wk (Jun-Aug)

45

Long term programmes

| | |
|------------------------------------|--------|
| Academic Semester | 15 990 |
| Intensive/Exam supplement per week | 40 |
| Multi-Language Year | 3 390 |

MORE EF PROGRAMS FOR ALL AGES

EF Language Courses Abroad For adults and young professionals.

Enhance your job prospects by combining language learning, networking, and career development. Courses start every Monday and last from 1 week to a full academic year.

www.ef.com/language

EF High School Exchange Year for families

Host an international high school exchange student and bring the world into your family. Experience a new culture at home, make friendships to last a lifetime, and fulfill a lifelong dream for a teenager from across the globe.

www.efexchangeyear.org

EF Corporate Language Learning Solutions

Tailor-made language training solutions for business, education and government. Succeed with the world's most advanced online business English school or at an EF Executive Language Institute abroad.

www.ef.com/corporate

Cultural Care, Au Pair International for families

Cultural Care Au Pair's childcare and cultural exchange program offers families affordable childcare customized to their needs with a unique international perspective, the industry leader for 24 years!

www.culturalcareaupair.com

ACADEMIC YEAR ABROAD

An EF Academic Year Abroad lets you focus your studies on academic subjects in order to enhance your resume for university or job-related prospects.

Our curriculum is designed to give you a fundamental understanding of your study language and enable you to use it in an academic or professional context. You'll concentrate on improving your language skills while exploring areas of academic interest at an increasingly higher and more challenging levels.

You'll return home with language credentials, friends from around the world and memories to last a lifetime.

Available for students aged 16 and above.
Visit us online www.ef.com/year

International Language Centers



HULT INTERNATIONAL BUSINESS SCHOOL

The global business school with seven locations across the world – Boston, San Francisco and New York in the US; London and Ashridge in the UK; and Dubai and Shanghai – Hult offers a uniquely global and transformative educational experience for undergraduates and graduates. Students can live and learn in as many as three of these locations in one year.

A unique Bachelor program

Earn your U.S.-accredited Bachelor of Business Administration in either San Francisco or London, or both, and spend your summers studying in Dubai, Shanghai, and Miami. You'll gain a truly international perspective and equip yourself with the essential skills needed to pursue a career in international business as you learn to see the world differently. What's more, Bachelor students can even earn direct access to a Hult bachelor course by choosing an EF University Preparation Abroad program.

Earn a global Masters or MBA

Specialize with one of three one-year Master degrees in International Business, Finance, and International Marketing – and for professionals with at least three years' work experience, Hult's innovative one-year MBA.

Visit www.hult.edu to find out more.



HULT
INTERNATIONAL
BUSINESS SCHOOL



WHAT OUR STUDENTS SAY

THEY'VE TRAVELED ABROAD, LEARNED A LANGUAGE AND HAVE MEMORIES TO SHARE. FIND OUT WHY SO MANY OF OUR STUDENTS DESCRIBE THEIR TIME ABROAD AS THE EXPERIENCE OF A LIFETIME – THROUGH THEIR OWN WORDS AND PICTURES.



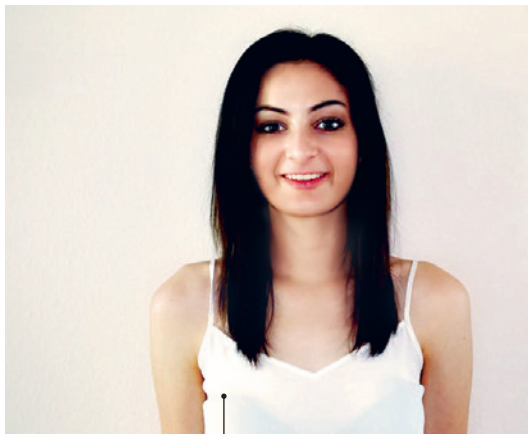
KIMBERLY MOONEY, MARYLAND
EF BARCELONA

"...the classes were catered towards student needs and interests, and the location-near the beach, museums, parks, and all sorts of architectural wonders-was ideal."



JONATHAN LEMAY, CANADA
EF BEIJING

"An unforgettable adventure that made me realize that traveling is the best way to study."



RACHEL LEVY, TEXAS
EF NICE

"EF really works to assure an upbeat experience. The attitude genuinely translates to the students on a daily basis. I'm so glad that I picked EF this summer."



ANDREA BRUERE, FLORIDA
EF PARIS

"I wouldn't trade my time in Paris for the world and in fact, I'm returning in December to meet up with friends I made. I will cherish these memories forever."

ENROLLMENT INFORMATION

2015-2016

Who May Apply?

Programs are open to students aged 16 and over at course start date. Select programs and start dates are available for students aged 13 – 15. The program Language Courses Abroad offers flexible lengths between 1 to 52 weeks per year and the programs Academic Year Abroad and Multi-language Year start at a minimum length of 20 weeks. The same terms and conditions apply for Academic Year Abroad and Multi-language Year.

How To Enroll

Students may enroll by phone, online, by mail, at an EF office or with an EF representative by completing the Enrollment Form. A non-refundable Enrollment Fee \$195 and optional Cancellation Protection Fee of \$50 is due upon enrollment. Upon enrollment students will receive a booking confirmation and initial invoice.

Students who complete the enrollment form wishing to book an Academic Year Abroad or a Multi-Language Year will be sent the appropriate enrollment information.

What's Included in the Course Fee?

- Course of choice (total tuition time varies according to program type)
 - Shared room in a homestay or select residences
 - Meal plan according to description on specific destination page
 - Wi-Fi access at the EF International Language Center
 - Digital learning media and academic materials
 - Placement and progress tests
 - EF Course Certificate and EFSET Graduation Report
 - Access to My EF from enrollment including an online pre-course
 - Online post-course in iLab for up to three or six months (depending on course)
 - The Course Fee is comprised of two elements: the Tuition Fee (40%) for lessons and the Student Services Fee (60%) for other items including homestay accommodation.
- For more detailed information about what's included in the Course fee, see individual destination pages 22-39. Included accommodation, board and other services vary from destination and type of course.

What's Not Included in the Course Fee?

- Enrollment fee
- Cancellation Protection Fee
- EF Course Books
- Local transportation to and from the Language Center and transfer to and from the airport to accommodation.
- Internet/Wi-Fi in homestay or residence may not be available
- Travel and medical coverage
- External exam fees (i.e. DELF, DALF, DELE, HSK, JLPT, etc.)
- Optional activities and excursions
- Credit card fees
- Courier fees

Methods of Payment

The course fees must be paid by any of the following means:

1. To the local EF office or representative
2. Partial payment by credit card (where applicable)
3. By bank transfer to EF Language Schools, INC at the following account:

Name of bank: SEB (Skandinaviska Enskilda Banken)
Address: 245 Park Ave, New York, NY 10167-0061
SWIFT Code: ESSEUS33XXX
Bank account: 00004459

*If asked for intermediary information, the wire to SEB goes through Bank of New York. Fedwire routing 021000018, SWIFT Code: IRVTUS3N, Account: 8900439688

Payment Plan

Students will receive a booking confirmation upon enrollment and an invoice for a second payment, which is 10% of the course fee, due 10 days after enrolling. A final invoice for the remaining balance is due at least 60 days prior to your program start date. For late payments, EF reserves the right to charge a late payment fee of \$75.

Students who enroll in EF's Academic Year Abroad or a Multi-Language Year programs will receive a booking confirmation upon enrollment and an invoice for a second payment due 10 days after enrolling. A final invoice for the remaining balance is due at least 90 days prior to your program start date. For late payments, EF reserves the right to charge a late payment fee of \$75.

Bookings made within 30 days of the start date may be charged an additional non-refundable courier fee. The payment of the whole course fee is due on the enrollment day.

Any promotional offers confirmed at the time of booking are subject to the student keeping the payment plan and not reducing the length of the booking.

Free Apple Watch

EF offers a free Apple Watch Sport to students who book an intensive or exam course of 8 weeks at selected destinations before December 31, 2015. The offer cannot be combined with other offers and cannot be used if the course is canceled or changed to another course type or course length. The offer is subject to cancellation without further notice. EF is not responsible for delays in delivery of the Apple Watch Sport caused by the supplier. This offer is subject to cancellation without further notice.

Free flight offer

For Intensive and Exam courses of 15 weeks and longer EF offers a flight cost contribution with a maximum of \$1000 USD. The flight booking must be made through EF. This offer cannot be used in conjunction with any other EF offer. The flight contribution will be fully charged to the customer if the course type is changed to a General or Basic course or if the course is

terminated and has therefore less than 15 weeks in length. Any fuel surcharge and airport taxes will not be included in the free offer. This offer is valid until December 31, 2015 and is subject to cancellation without further notice.

Travel Insurance Coverage

All students are required to have medical and personal liability insurance coverage. EF has negotiated and entered into a tailor-made travel insurance group policy with the insurance provider Erika Insurance Ltd. The fee to be covered is \$89 for the first two weeks, then \$40 for each additional week. Students who wish to purchase their own insurance policy need to provide EF with a copy in English of the alternative insurance policy.

Parents and guardians of students under age of 18 are required to sign a medical release waiver.

Cancellation Protection

EF Cancellation Protection is available upon enrollment and charged as a one-time, non-refundable fee of \$50. This covers cancellations before departure due to illness or illness in the student's immediate family. A doctor's documentation is needed within 10 days of the claim.

Accommodation

EF Accommodation is available from the Sunday prior to the student's Monday start date until the Saturday after the course ends. Students should arrange to travel to arrive/depart on these days, as arriving earlier or later to accommodation may require additional fees.

Class Schedules and Attendance

Classes are offered at all EF International Language Centers in a block schedule of 5 days on Monday to Saturdays from 8:00 to 20:00. EF language lessons have duration of at least 40 minutes and are often held in blocks of 2 x 40 minutes. EF students are required to have an 80% attendance at the lessons to receive the Course certificate and maintain visa status.

School Breaks and Public Holidays

In the event of a public holiday, EF International Language Centers will be closed and lessons on those dates will not be made up at a later date. Booked accommodation is available to students during school breaks and holidays. The number of school breaks at each Language Center may vary.

Course levels

Before the start of the course students must take a level placement test in EF's My EF iLab to assess their language proficiency. The results will be used to place students in the correct course level.

When an EF International Language Center has a General language level of five students or fewer, EF reserves the right to combine students of different levels in the same classes.

EF Course Books

EF Course Books are needed to follow EF course syllabi. Book prices are as follows:

Non-English courses:
Weeks 1-9: \$75; weeks 10-18: \$145; weeks 19-27: \$195
*each additional six week interval: \$35

Academic Year Abroad or a Multi-Language Year programs:
6 Months: \$195
9 Months: \$265
11 Months: \$295

My EF web service and iLab lessons

All EF students receive an online account for My EF. Any correspondence, photos and other media used on My EF will be considered personal and EF will not accept any responsibility for such correspondence and media. Parent/s or legal guardian/s of students under the age of majority traveling with EF give their consent for the student to use the My EF web service.

Students enrolled in non-English courses will have access to iLab during their course. Exceptions to this are EF International Language Centers in Tokyo and Beijing where iLab lessons are replaced by teacher-led lessons.

Special Interest Lessons (SPIN lessons)

Examples of SPIN lessons vary from one EF Center to another and are subject to change due to availability.

EF's Learning Guarantee

Cover of student's costs under the Learning Guarantee only applies to the Tuition Fee. Students who choose to continue studying for free under EF's learning guarantee are responsible for all other costs, including but not limited to accommodation, meals, travel and visa fees.

Internship or Volunteer Experience Program

The EF Internship or Volunteer Experience Program is available at an additional fee that varies per destination. Included in this fee is a preparation program and up to 100 hours of part-time unpaid work or volunteer experience. Internship and volunteer experience programs vary according to visa regulations and are therefore not guaranteed to all students.

Arrival and Airport Transfers

The fee for an optional transfer between the airport of arrival and the destination is listed on the EF International Language Center pages 22-39. This covers the cost of administration, communication, greeting services and transportation. The transfer service is offered between 7:00 and 21:00 hours local time on Sundays. If students arrive at any other time, EF can arrange a special transfer at an additional cost. If several students are picked up at the same time certain waiting periods can occur. EF cannot be held responsible for delays caused by traffic, road construction or accidents.

Activity credit

Activity credit remaining after the course end date can be transferred to another course for up to 12 months after the course end date or refunded for up to three months after the course end date if the value is 15 USD or more.

Group Travel packages

The Group Travel package includes an EF Leader and transfer to accommodation or EF International Language Center and flights if applicable. The minimum group size for Group Travel is 17 students. Travels for smaller groups can be arranged for a "Small Group Supplement". EF maintains the right to cancel group travel arrangements for groups smaller than 17 within 28 days of departure. Fuel surcharge and airport taxes will be added on all Group Travel packages where applicable.

Rebooking

Any request to change destination, course type, start date, or type of accommodation after initial enrollment will result in a rebooking fee of \$75, which is payable immediately. EF retains the right to make changes to destination, course type, start date, or type of accommodation up to 21 days before the course start date.

Cancellations before program start

All cancellations must be made in writing to your nearest EF office, local EF representative or EF School Director. In all cases, the Enrollment Fee, Cancellation Protection fee and courier fee are non-refundable.

Late cancellations should be made before 5 p.m. (Eastern Standard Time) on the Thursday prior to your program start date in order to obtain refund for any booked transfers.

For all destinations:

- If the student cancels 45 days or more before the start of the program the Course Fee will be refunded, with the exception of the Program Deposit. The Enrollment Fee, the Courier Fee, and the Cancellation Protection Fee will not be refunded. The Program Deposit will be refunded if the student's visa application is denied.
- If the student cancels 16 to 44 days prior to departure, the Tuition Fee is fully refundable. EF will retain 40% of the Student Services Fee (max. \$2500) to cover the cost of prepaid accommodation and services. The Program Deposit of 10% will not be refunded.

- If a student cancels 15 days or less prior to departure, EF will retain 50% of the Tuition Fee. EF will retain 40% of the Student Services Fee (max \$2500) to cover the cost of prepaid accommodation and services.

Withdrawals after course start

All withdrawals need to be made in writing to EF. If the student wishes to withdraw from their course after arrival at the International Language Center, then the student must inform the EF School Director and sign a copy of the course change notification form. Refunds, if eligible, are made by the EF office or representative where the course fees were paid. EF is not obliged to make refunds to students whose courses are terminated due to violation of EF's written disciplinary and/or attendance policies or local, state or federal law.

For all destinations:

If the student withdraws from their course after arrival at the EF Language Center, they must give their EF School Director at least four weeks advance notice. No refund will be given during the first 4 weeks of the notice period. The student will receive a full refund of the Course Fee for all remaining weeks after the four-week notice period.

For courses four weeks or less:

EF will retain the Tuition Fee for the course. EF will retain any actual housing costs incurred and a maximum total of \$500 for non-refundable charges, including any housing administration fees.

For courses greater than four weeks:

For students who withdraw at any point in the first four weeks, EF may retain the Course Fee applicable to the first four weeks. EF will retain any actual housing costs incurred and a maximum total of \$500 for non-refundable charges, including housing administration fees.

For students who withdraw after the first four weeks but before or at the mid-point (50%) of the course of the course, EF will retain a prorated amount of the Tuition Fee. EF will retain any actual housing costs incurred and a maximum total of \$500 for non-refundable charges, including housing administration fee.

Prorated refunds will be calculated on a weekly basis. When determining the number of weeks, EF will consider a partial week the same as if a whole week were completed, provided the student was present at least one day during the scheduled week.

For students who withdraw after the mid-point (50%) of the course, EF will retain all charges for the course. Charges other than Tuition: Included in the course fee is a \$400.00 housing administration fee, which is non-refundable. Extra costs, such as books, are non-refundable.

Student Code of Conduct

Students agree to abide by student conduct rules and other policies while enrolled in EF programs. Inappropriate conduct includes but is not limited to illegal activity or behavior that deliberately disrupts the learning environment or damages EF property or the property of fellow classmates. Students in breach of this code of conduct will be expelled or suspended from the program and no refund will be issued.

Passport and visas

Each student is responsible for having a valid passport and any applicable visas.

Validity of Brochure Fees

The prices published in this brochure are based upon currency exchange rates in effect at the time of writing July 7, 2015. They are therefore subject to change up to 30 days before departure. The prices in this brochure are valid until September 30, 2016.

Personal Data

The student's personal data will be processed by EF both within and outside the EU/EEA/Switzerland, primarily for the purpose of completing the booking, providing the student with the products and services that they have ordered (including travel insurance coverage), and for customer service. We may also inform the student of new offers, products and services which may be of interest (including by e-mail and SMS), and the student may unsubscribe at any time. EF may share students' personal data with our corporate affiliates, claims handlers and business partners both within and outside the EU/EEA/Switzerland. The student also agrees that EF may use his/her personal data and that it may combine such data with data from third party registries. EF processes the student's personal data in compliance with applicable data protection legislation. If you have questions about EF's processing of your personal data, would like to have a copy of the information EF holds about you, or have inaccurate personal data rectified or erased, please contact the Tour Operator company: EF Education First Ltd or your local EF office.

Photography and film material

By accepting EF's terms and conditions, the student accepts that EF freely can use all photography, film and sound material that has been created by EF and or by EF's staff during the course, without asking further approval from the student.

Liability and force majeure

EF will not be liable or responsible for any loss, damage, inconvenience, delay in performance, or failure to perform in connection with the provision of any goods or services due to causes beyond EF's reasonable control, including but not limited to force majeure, fire, natural disaster, acts of government, failure of suppliers or subcontractors, labor disputes or civil unrest, criminal, terrorist or threatened terrorist activities of any kind, public health emergencies, any negligent or willful act or failure to act by any third party, or any other cause beyond the direct control of EF. These conditions do not affect your rights as defined by the consumer protection laws in your host country.

Misspellings and typos

EF reserves the right to correct typographical errors and is not bound by obvious inaccuracies.

Organizer

All travel and language courses are supplied by EF Education First Ltd, Switzerland. EF Education First Ltd is the polyholder of the group travel insurance with Erika Insurance Ltd. EF International Schools Inc promotes in the USA, the sale of travel and language courses supplied by EF International Language Schools Ltd.

Governing Law

This agreement shall be governed by the laws of the USA, without regard to conflict of law provisions. Any dispute or claim arising out of or in connection with this agreement must be resolved by a court located in the USA.

COURSE START DATES

Intensive and General Courses in:

Munich, Paris, Barcelona, Playa Tamarindo, Rome, Singapore:
2015: September 14, 28; October 12, 26; November 9, 23; December 7, 21;
2016: January 4, 18; February 1, 15, 29; March 14, 28; April 11, 25; May 9, 23; June 6, 20, 27; July 4, 11, 18, 25; August 1, 8, 15, 22, 29; September 12, 26; October 10, 24; November 7, 21; December 5, 19

Madrid, Malaga, Berlin, Nice, Beijing, Tokyo:
2015: September 7, 21; October 5, 19; November 2, 16, 30; December 14, 28; **2016:** January 11, 25; February 8, 22; March 7, 21; April 4, 18; May 2, 16, 30; June 13, 27; July 4, 11, 18, 25; August 1, 8, 15, 22; September 5, 19; October 3, 17, 31; November 14, 28; December 12, 26

Basic Courses in:

All schools except Singapore:
2016: June 6, 13, 20, 27; July 4, 11, 18, 25; August 1, 8, 15, 22
Singapore:
2016: January 4, 11, 18, 25; February 1, 8, 15, 22, 29; March 7, 14, 21

Academic Year Abroad Program:

2015: November 2nd; **2016:** January 11th; April 4th; June 13th; September 19th; October 31st; **2017:** January 9th; April 24th; June 19th; September 18th; November 6th

*Start date for select schools.
Contact your local EF office for details.

ENHANCE YOUR TRIP

Optimize your study abroad experience with EF's travel services. From booking flights to expert advice – rest assured that we've got it covered.



Travel like a jetsetter

EF's travel services will search for the best deal, book your flight and manage your reservation.



Arrive in style

Catch a ride with EF's transfer service – whether you're being picked up from the airport to begin your adventure or dropped off to make your way back home.



Maximize your studies

Make the most of your time abroad by upgrading to an intensive course or extending your studies.



Benefit from our experience

Studying abroad is a big decision. Stop by the EF office or email us at ILS@ef.com to ask your important questions.



Have peace of mind

Ensure that your medical expenses and personal belongings are covered. You'll also have course and liability protection – and support around the clock with insurance coverage customized for you.

Request EF Travel Services on the Enrollment Form or by calling 1-800-992-1892.

THE FASTER WAY TO LEARN A LANGUAGE

1-800-992-1892 or www.ef.com/language



Contact Information

EF International Language Centers

Two Education Circle
Cambridge, MA 02141

Tel: 1-800-992-1892

Fax: 1-617-619-1701

E-mail: ILS@ef.com

www.ef.com/language

www.facebook.com/EFUnitedstates

www.youtube.com/EF



Accreditations

The Independent Schools Inspectorate (ISI) is the approved educational oversight body authorised by the UK Home Office to enroll international students under Tier 4 of the Points Based System.

The EF International Language Centers in London, Cambridge, Brighton, Oxford, Manchester, Bristol, Eastbourne and Bournemouth are accredited by the British Council.

EF Dublin is recognized by ACELS, a service of quality and qualifications in Ireland for English language teaching.

The EF International Language Centers in the USA are accredited by ACCET.

EF Vancouver and Toronto are accredited by Languages Canada.

The EF International Language Centers in Sydney and Brisbane are accredited by NEAS.

The EF International Language Centers in Cambridge, St. Julian's, Cape Town, Paris, Nice, Madrid, Barcelona, Malaga, Rome and Munich are accredited by EAQUALS.

EF is accredited by English New Zealand in Auckland, which is the voice for both private and state sector English language schools in New Zealand.

